

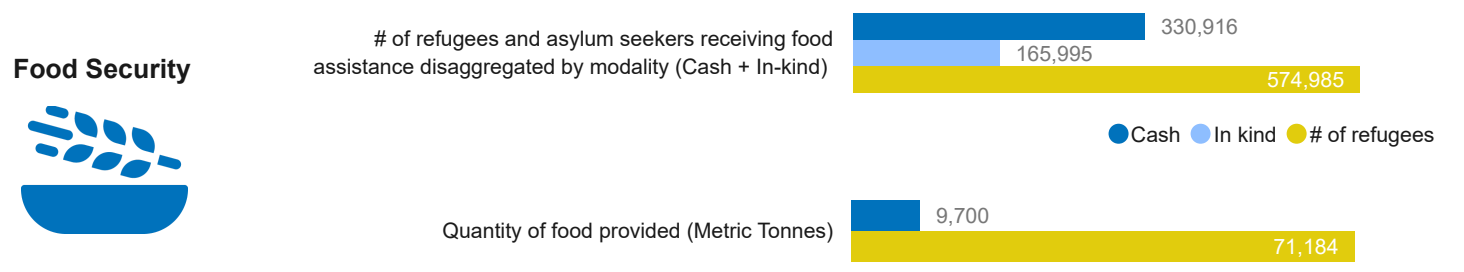
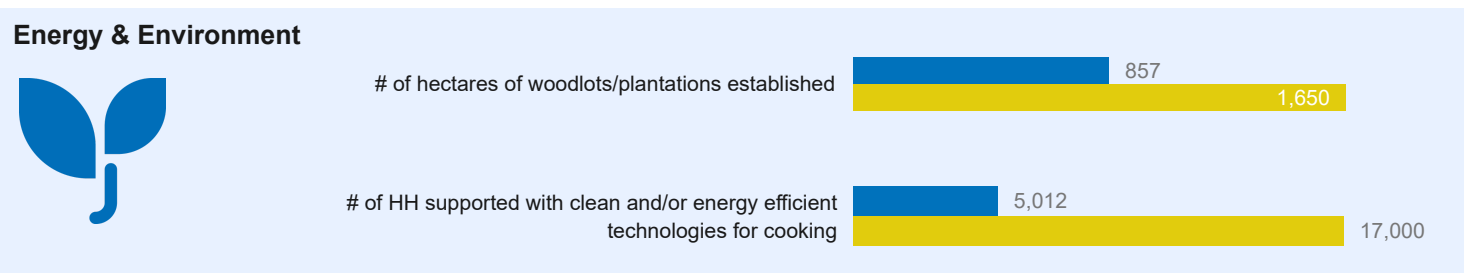
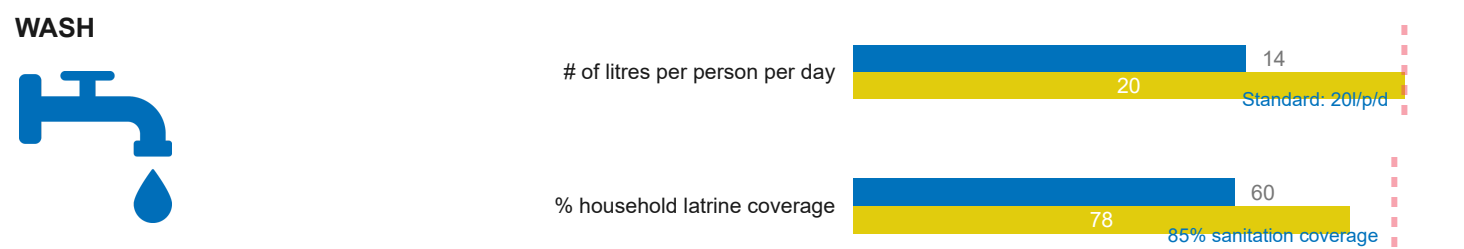
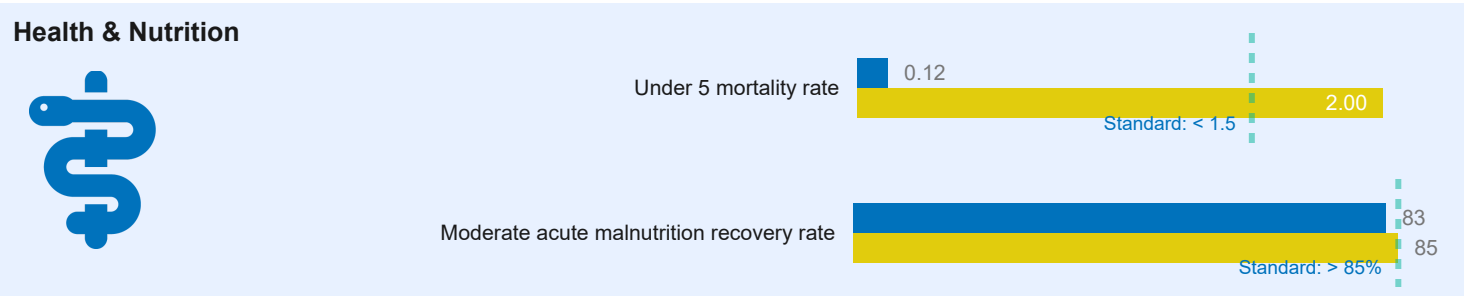
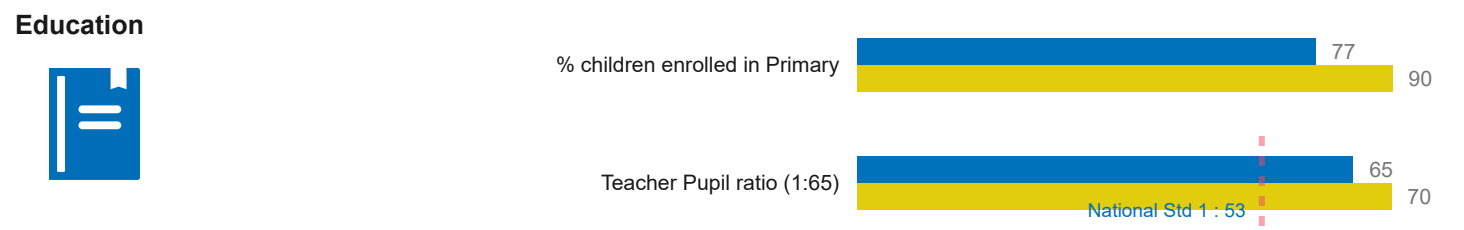
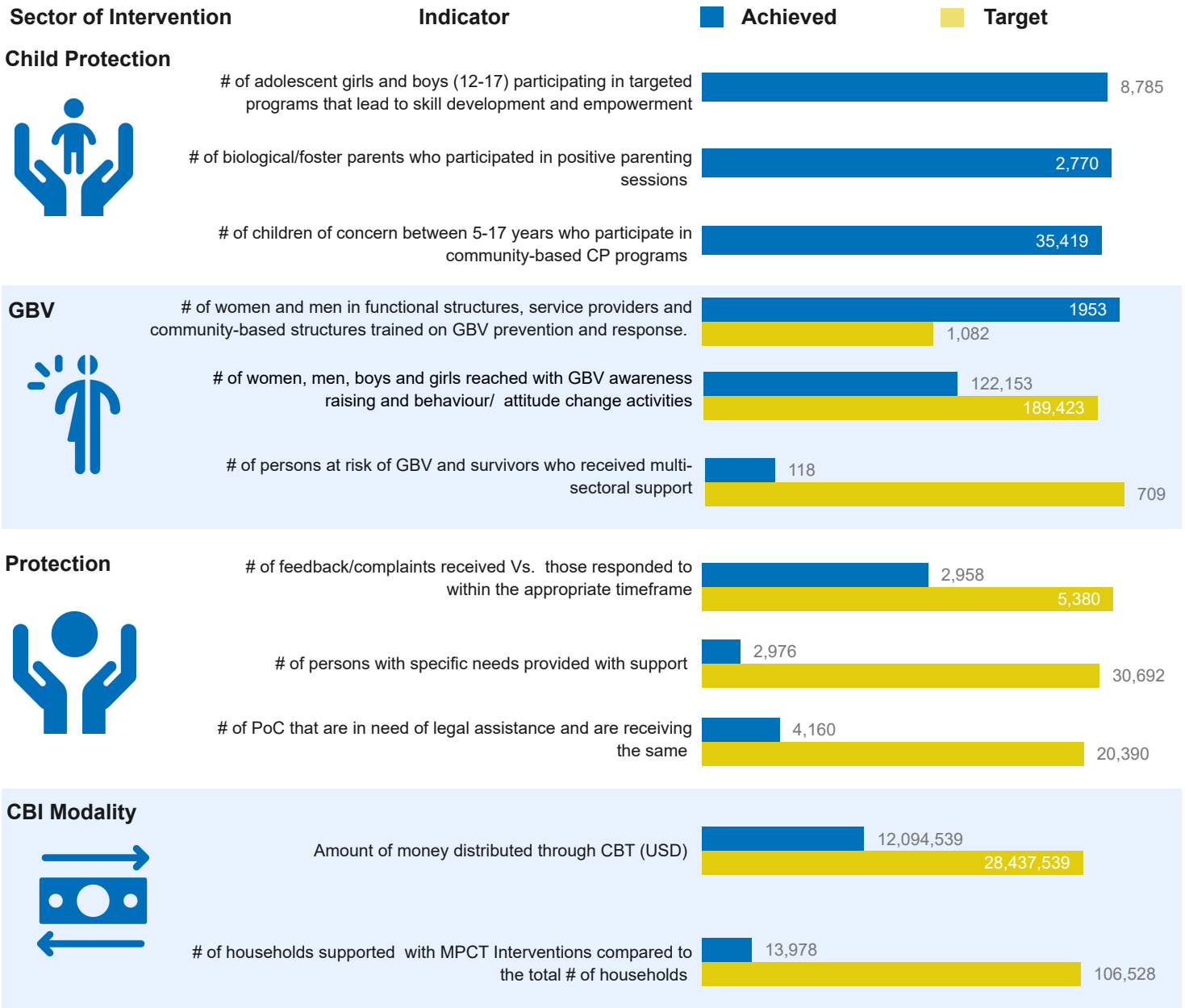


Adjumani Sub-Office Performance Snapshot

Population Refugees and asylum-seekers	70 Partners in Response	00 Refugee Led Orgs	06 Government Partners	07 UN Agencies
 574,985 # of refugees	<i>On average two performance indicators are measured per sector against the annual 2024 RRP targets are shown</i>		14 National NGOs	43 International NGOs
 106,528 # of households				

Sector of Intervention	Indicator	Achieved	Target
------------------------	-----------	----------	--------





List of Partners who reported for Q2 2024, UN Agencies and Government

National NGOs
 ACORD, AFI, AFOD, CEFORD, IDI, JEEP, MPK, PALM Corps, Post Bank, REPSSI, RHU, RICE-WN, ThriveGulu and TPO

International NGOs
 ACF, ACODEV, AFOD, AIRD, AIRTEL, AMREF, APPCO, AVSI, AWR, AyudaEA, C&D, CARE, CESVI, DRC, ENABEL, Equity bank, FCA, FH, FHA, ForAfrika, FRC, GF, HHA, HI, IRC, IsraAID, JRS, LWF, MCCJ, MTI, NRC, Plan, RAHU, SCI, SHA, TRI, TTR, URCS, WCC, WCH, WIU, and WVI

UN Agencies
 UNHCR, UNICEF, WFP, UNFPA, UNOPS, and FAO

Government
 Adjumani DLG, Kiryandongo DLG, NFA, OPM, Lamwo DLG, and Obongi DLG



Settlement Performance Snapshot

Population

Refugees and asylum-seekers

37

Partners in Response

0

Refugee Led Orgs

03

Government Partners

03

UN Agencies



225,571
of refugees

29,752
of households

On average two performance indicators are measured per sector against the annual 2024 RRP targets are shown

06

National NGOs

25

International NGOs

Sector of Intervention

Indicator

Achieved

Target

Education



% children enrolled in Primary



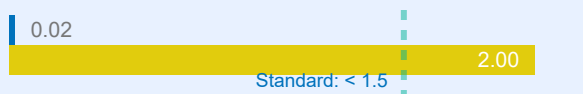
Teacher Pupil ratio (1:65)



Health & Nutrition



Under 5 mortality rate



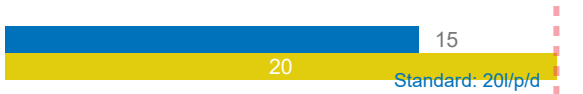
Moderate acute malnutrition recovery rate



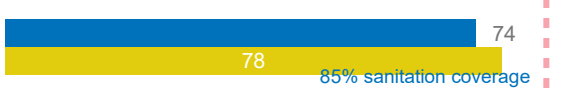
WASH



of litres per person per day



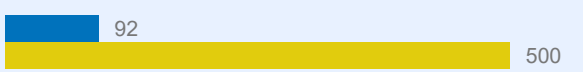
% household latrine coverage



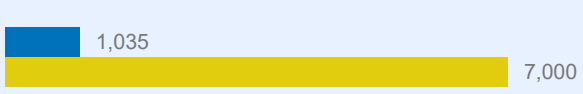
Energy & Environment



of hectares of woodlots/plantations established



of HH supported with clean and/or energy efficient technologies for cooking



Food Security



of refugees and asylum seekers receiving food assistance disaggregated by modality (Cash + In-kind)



Quantity of food provided (Metric Tonnes)



Livelihoods & Resilience



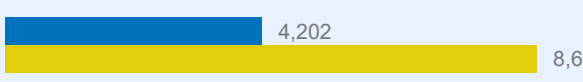
243

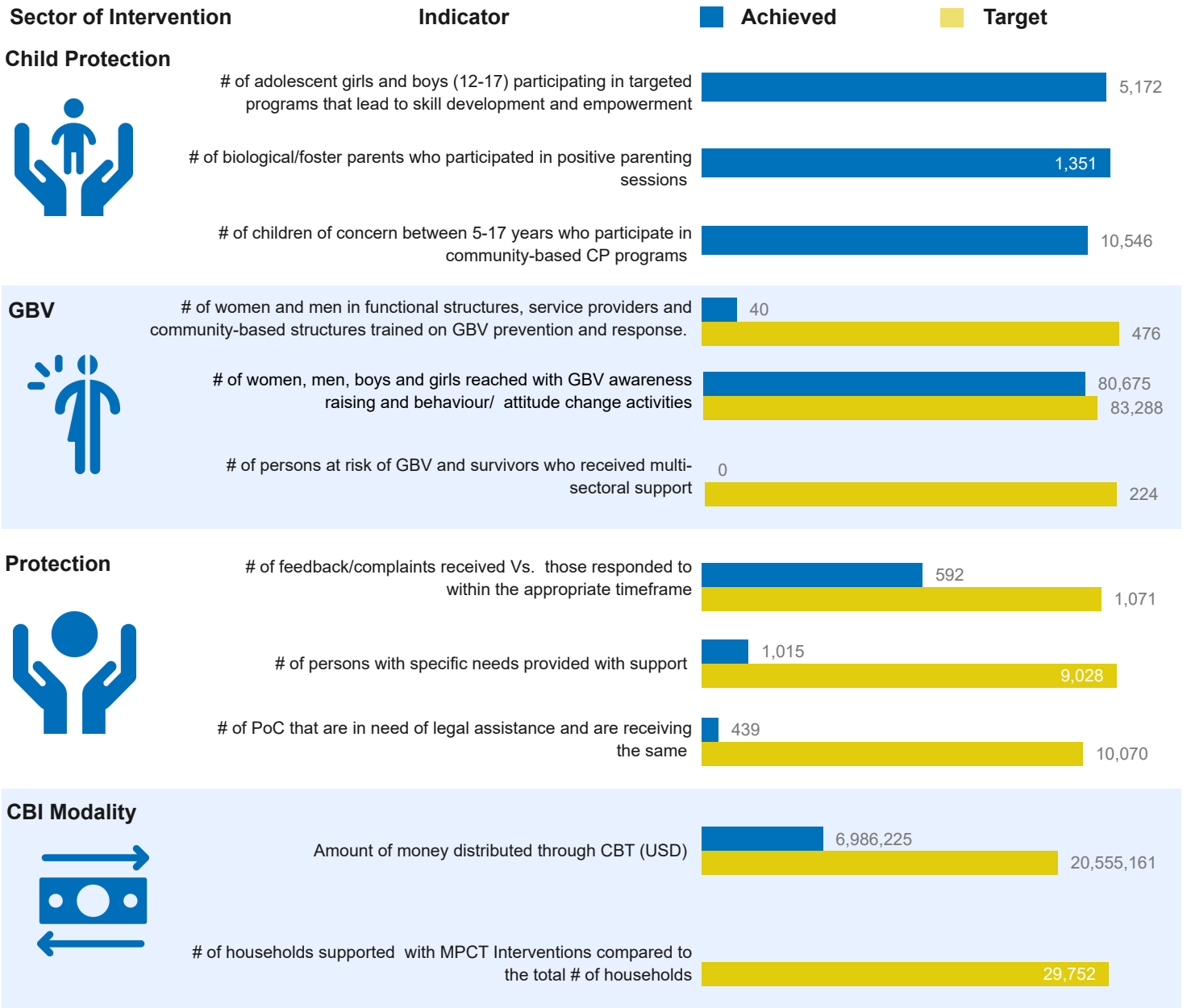
Acres of arable land accessed by refugees

960

HH having received livelihood support

of men, women, boys and girls trained on financial literacy





List of Partners who reported for Q2 2024, UN Agencies and Government

National NGOs

CEFORD, IDI, JEEP, PALM Corps, Post Bank and RHU

International NGOs

ACF, ACODEV, AFOD, AIRD, AMREF, AVSI, AyudaEA, C&D, CARE, FCA, FH, FRC, JRS, LWF, MTI, NRC, Plan, RAHU, SHA, TTR, URCS, WCC, WIU, and WVI

UN Agencies

UNHCR, UNICEF, and WFP

Government

Adjumani DLG, NFA, and OPM



Settlement Performance Snapshot

Population

Refugees and asylum-seekers

23

Partners in Response

00

Refugee Led Orgs

03

Government Partners

03

UN Agencies



128,415

of refugees

31,316

of households

On average two performance indicators are measured per sector against the annual 2024 RRP targets are shown

05

National NGOs

12

International NGOs

Sector of Intervention

Indicator

Achieved

Target

Education



% children enrolled in Primary

74

90

Teacher Pupil ratio (1:65)

63

70

National Std 1 : 53

Health & Nutrition



Under 5 mortality rate

0.15

Standard: < 1.5

2.00

Moderate acute malnutrition recovery rate

64

Standard: > 85%

85

WASH



of litres per person per day

10

Standard: 20l/p/d

20

% household latrine coverage

44

85% sanitation coverage

78

Energy & Environment



of hectares of woodlots/plantations established

0

200

of HH supported with clean and/or energy efficient technologies for cooking

2,335

2,000

Food Security



of refugees and asylum seekers receiving food assistance disaggregated by modality (Cash + In-kind)

91,647

8,593

128,415

● Cash ● In kind ● # of refugees

Quantity of food provided (Metric Tonnes)

1,298

2,234

Livelihoods & Resilience



23

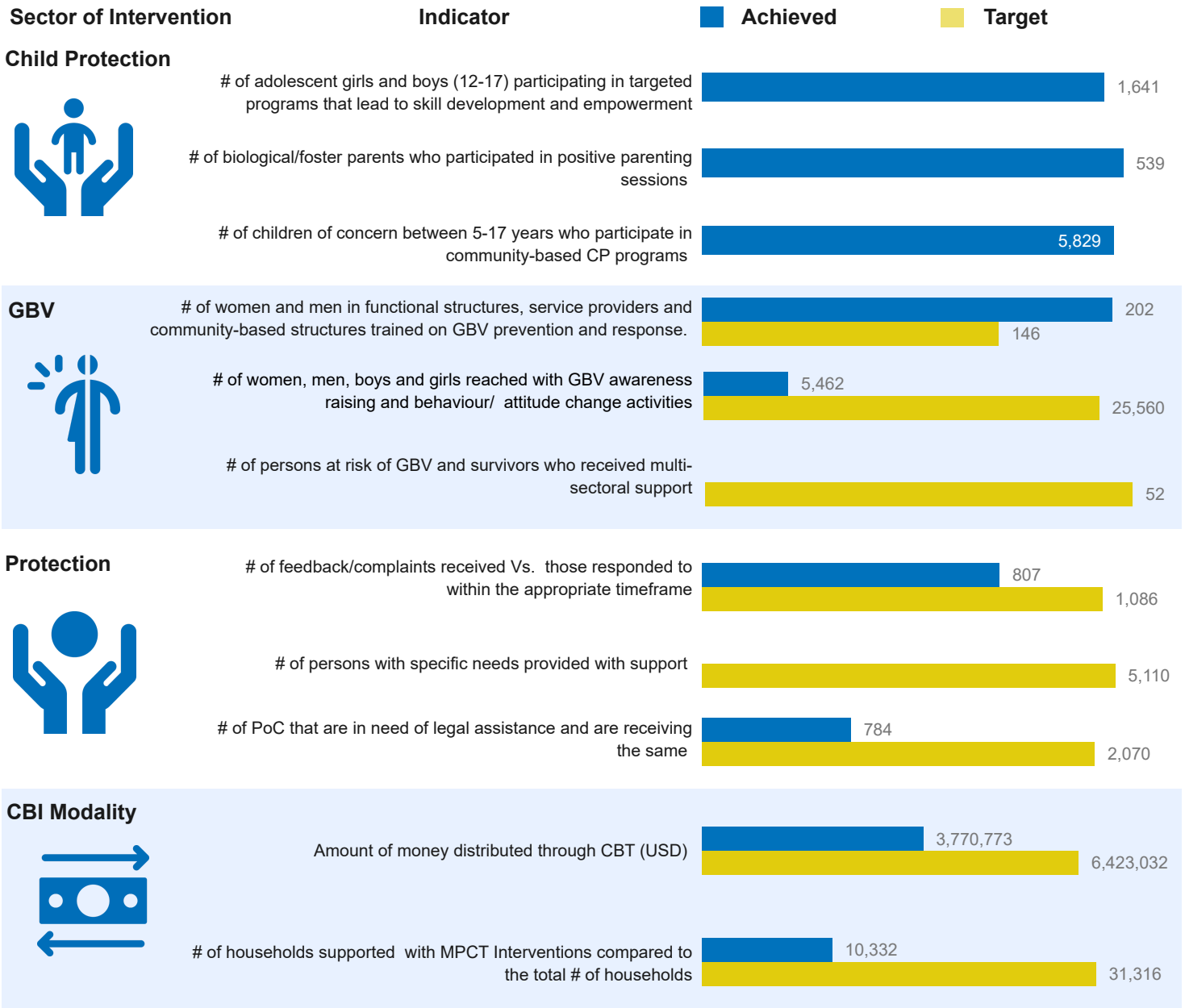
Acres of arable land accessed by refugees

3,205

HH having received livelihood support

of men, women, boys and girls trained on financial literacy

2,234



List of Partners who reported for Q2 2024, UN Agencies and Government

National NGOs
AFI, AFOD, Post Bank, REPSSI and TPO

International NGOs
ACF, AIRD, Airtel, DRC, ENABEL, FRC, IRC, LWF, SCI, SHA, TRI, and URCS

UN Agencies
UNHCR, FAO, and WFP

Government
Kiryandongo DLG, NFA, and OPM



Settlement Performance Snapshot

Population
Refugees and asylum-seekers

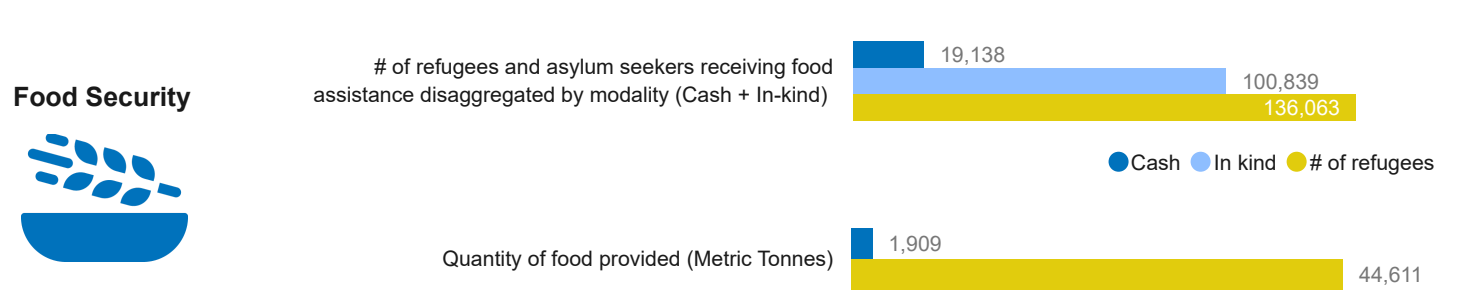
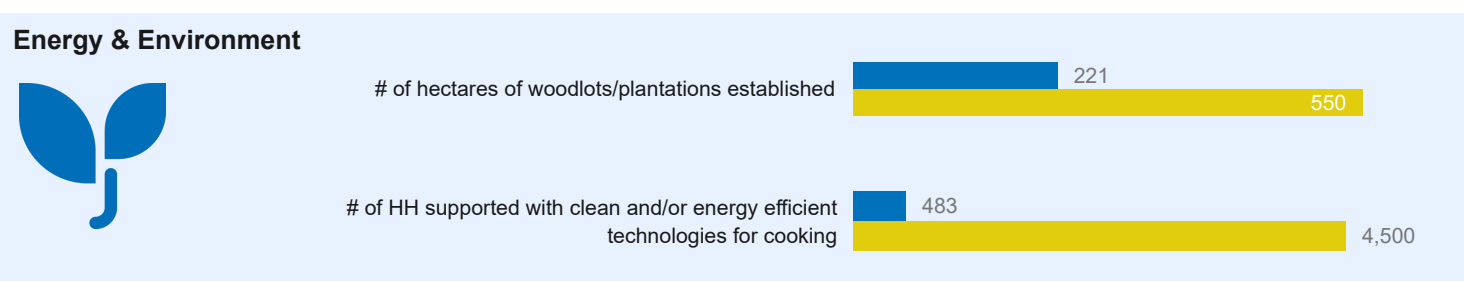
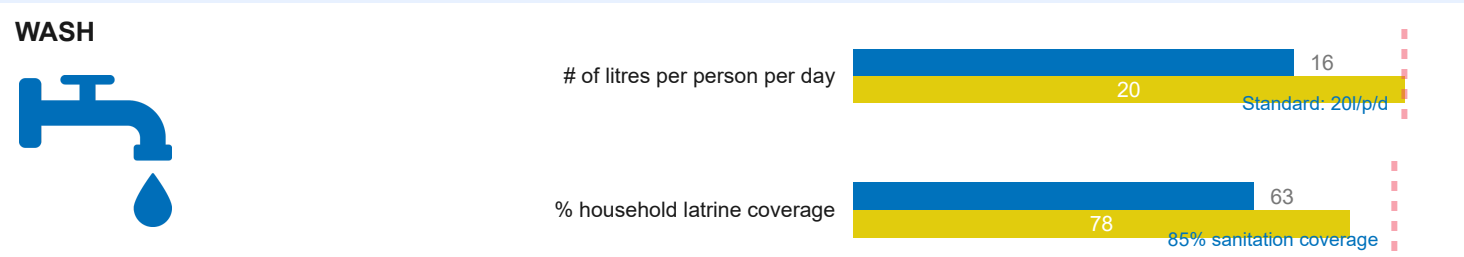
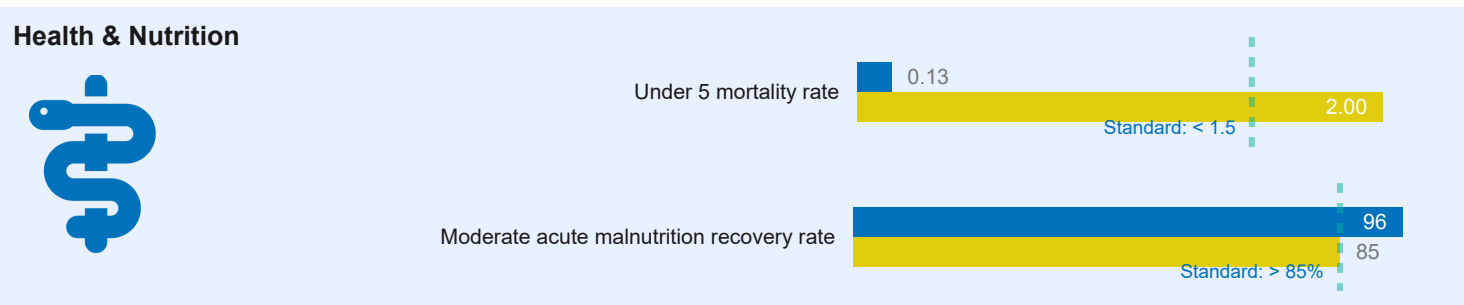
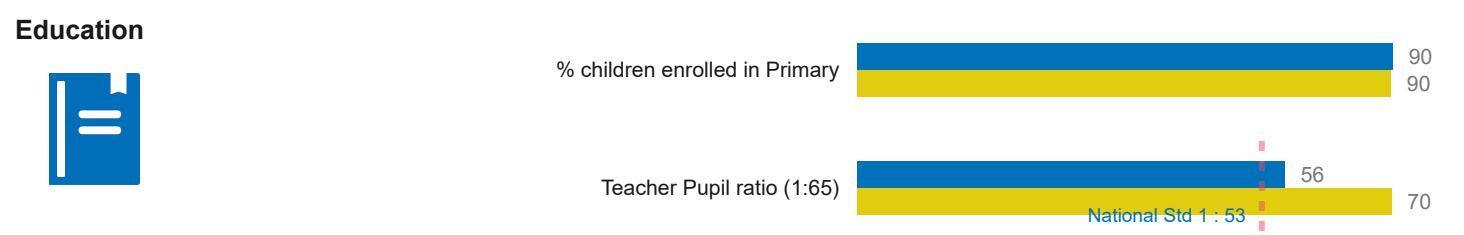
25 Partners in Response **00** Refugee Led Orgs **03** Government Partners **03** UN Agencies

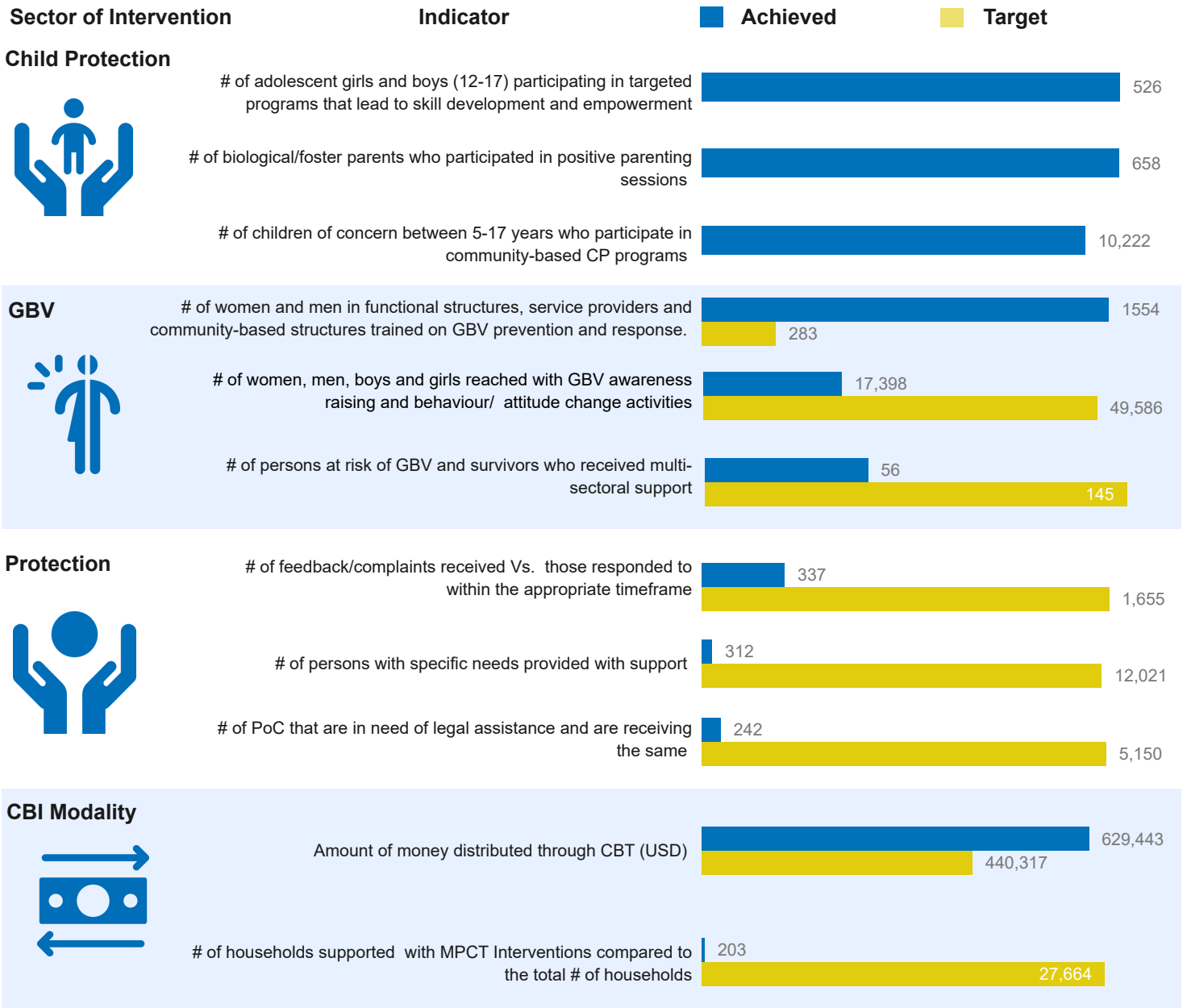
136,063 # of refugees
27,664 # of households

On average two performance indicators are measured per sector against the annual 2024 RRP targets are shown

04 National NGOs **15** International NGOs

Sector of Intervention	Indicator	Achieved	Target
------------------------	-----------	----------	--------





List of Partners who reported for Q2 2024, UN Agencies and Government

National NGOs
AFOD, CEFORD, PALM Corps, and RICE-WN

International NGOs
ACF, AIRD, AyudaEA, Equity Bank, FCA, ForAfrika, HHA, IsraAID, JRS, LWF, MCCJ, MTI, URCS, WCC, and WCH

UN Agencies
UNFPA, UNHCR, and WFP

Government
Obongi DLG, NFA, and OPM

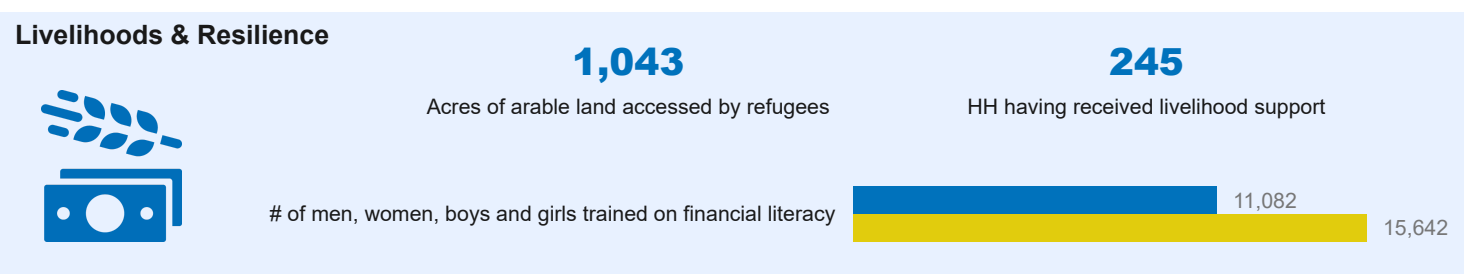
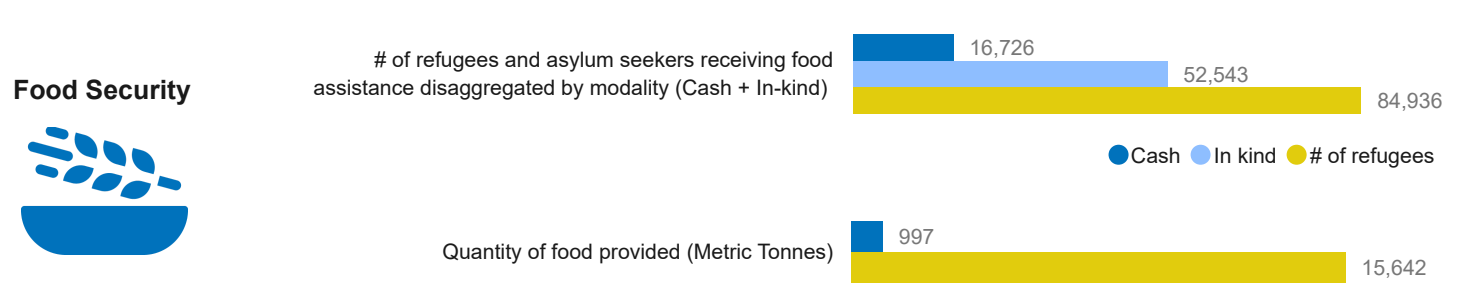
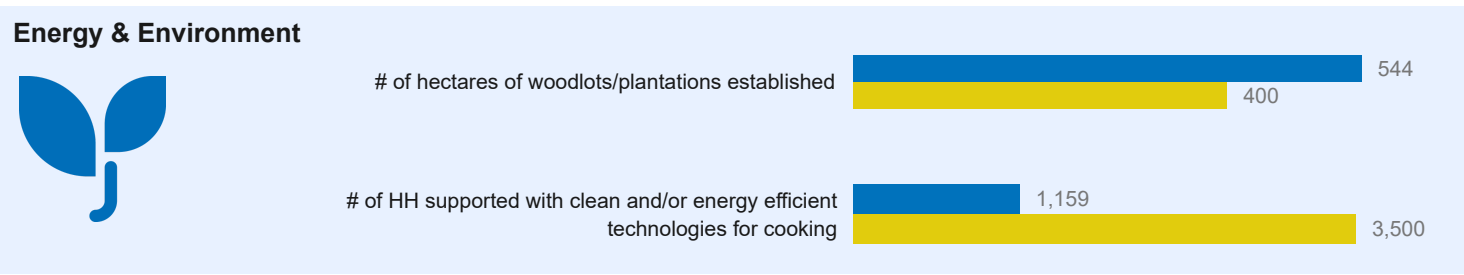
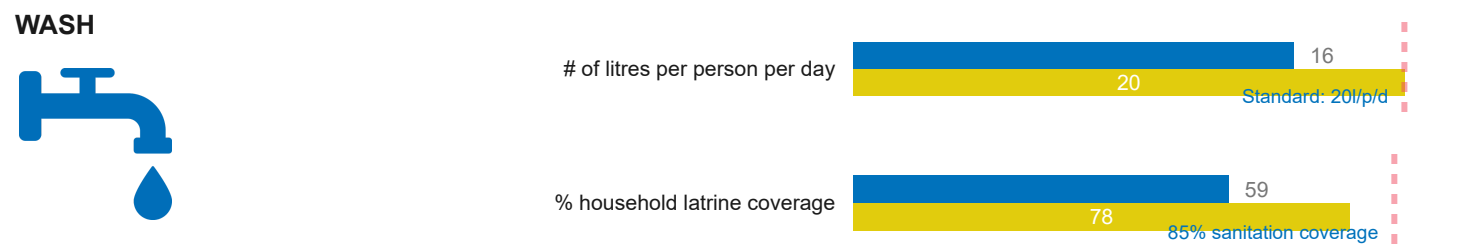
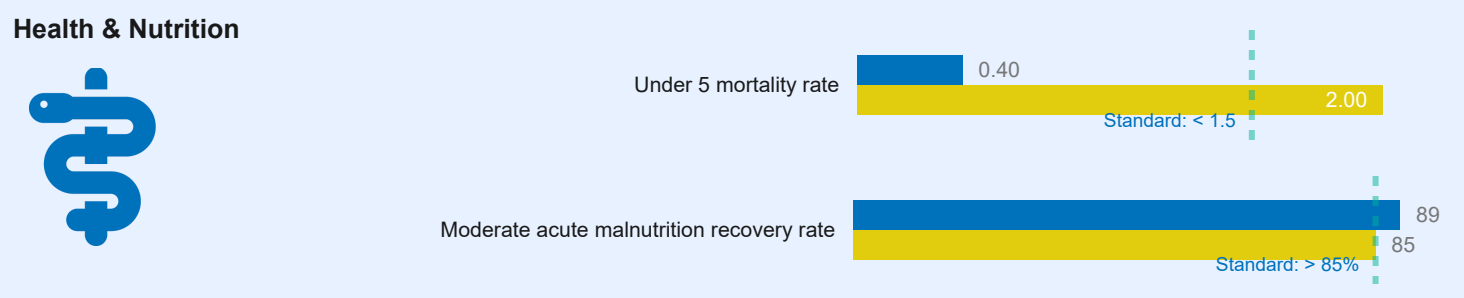
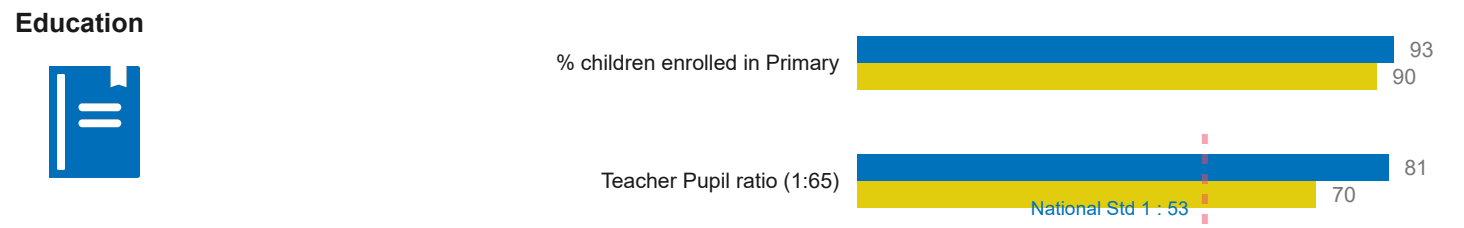


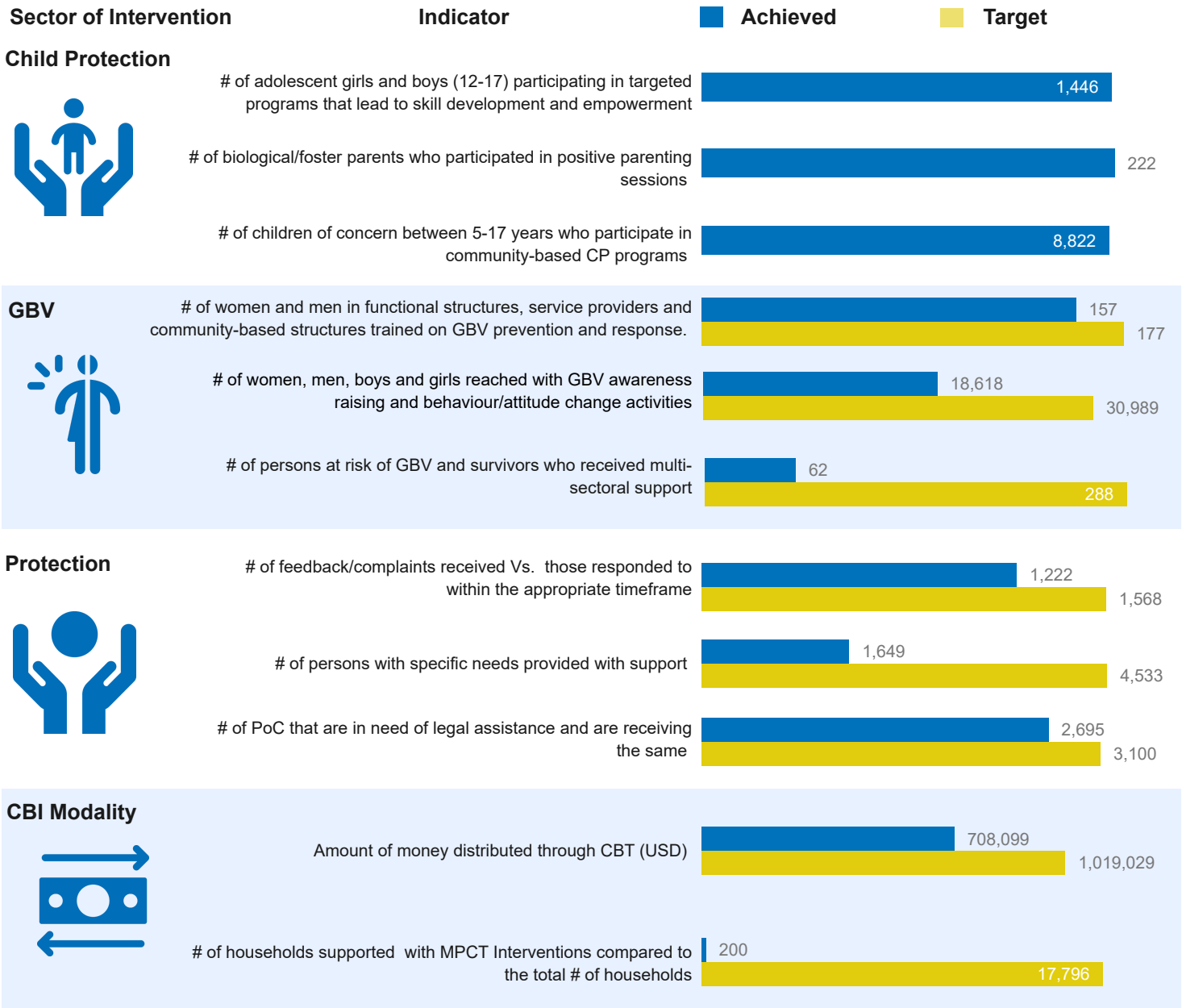
Settlement Performance Snapshot

Population
Refugees and asylum-seekers

28 Partners in Response	00 Refugee Led Orgs	03 Government Partners	05 UN Agencies
84,936 # of refugees	<i>On average two performance indicators are measured per sector against the annual 2024 RRP targets are shown</i>		03 National NGOs
17,796 # of households			17 International NGOs

Sector of Intervention	Indicator	Achieved	Target
------------------------	-----------	----------	--------





List of Partners who reported for Q2 2024, UN Agencies and Government

National NGOs
ACORD, MPK, ThriveGulu

International NGOs
ACF, AIRD, APPCO, AVSI, AWR, AyudaEA, CESVI, Equity bank, FH, FHA, FRC, GF, HI, IRC, LWF, SCI, and URCS

UN Agencies
UNFPA, UNHCR, UNOPS, UNWOMEN and WFP

Government
Lamwo DLG, NFA and OPM