

National Performance Snapshot

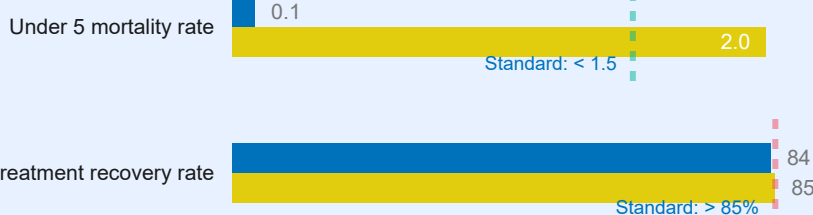
Population Refugees and asylum-seekers	137 Partners in Response	05 Refugee Led Orgs	16 Government Partners	10 UN Agencies
1,756,793 Refugees and asylum seekers	<i>On average two performance indicators are measured per sector against the annual 2024 RRP targets</i>			73 International NGOs
451,056 Households		33 National NGOs		

Sector of Intervention	Indicator	Achieved	Target
------------------------	-----------	----------	--------

Education



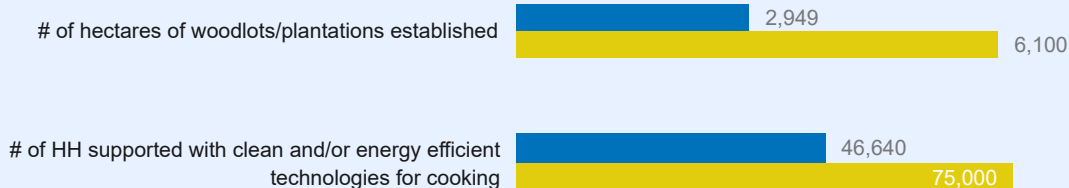
Health & Nutrition



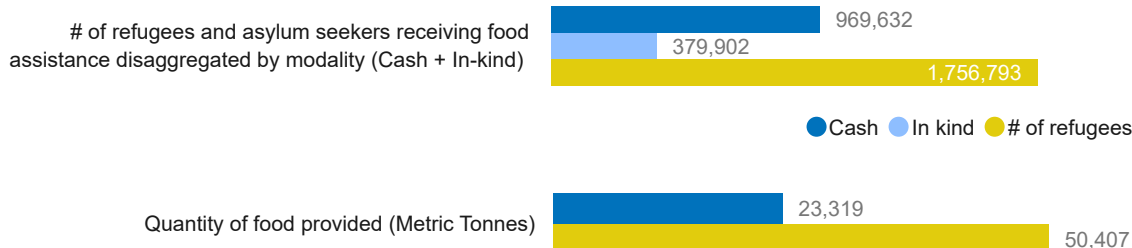
WASH



Energy & Environment

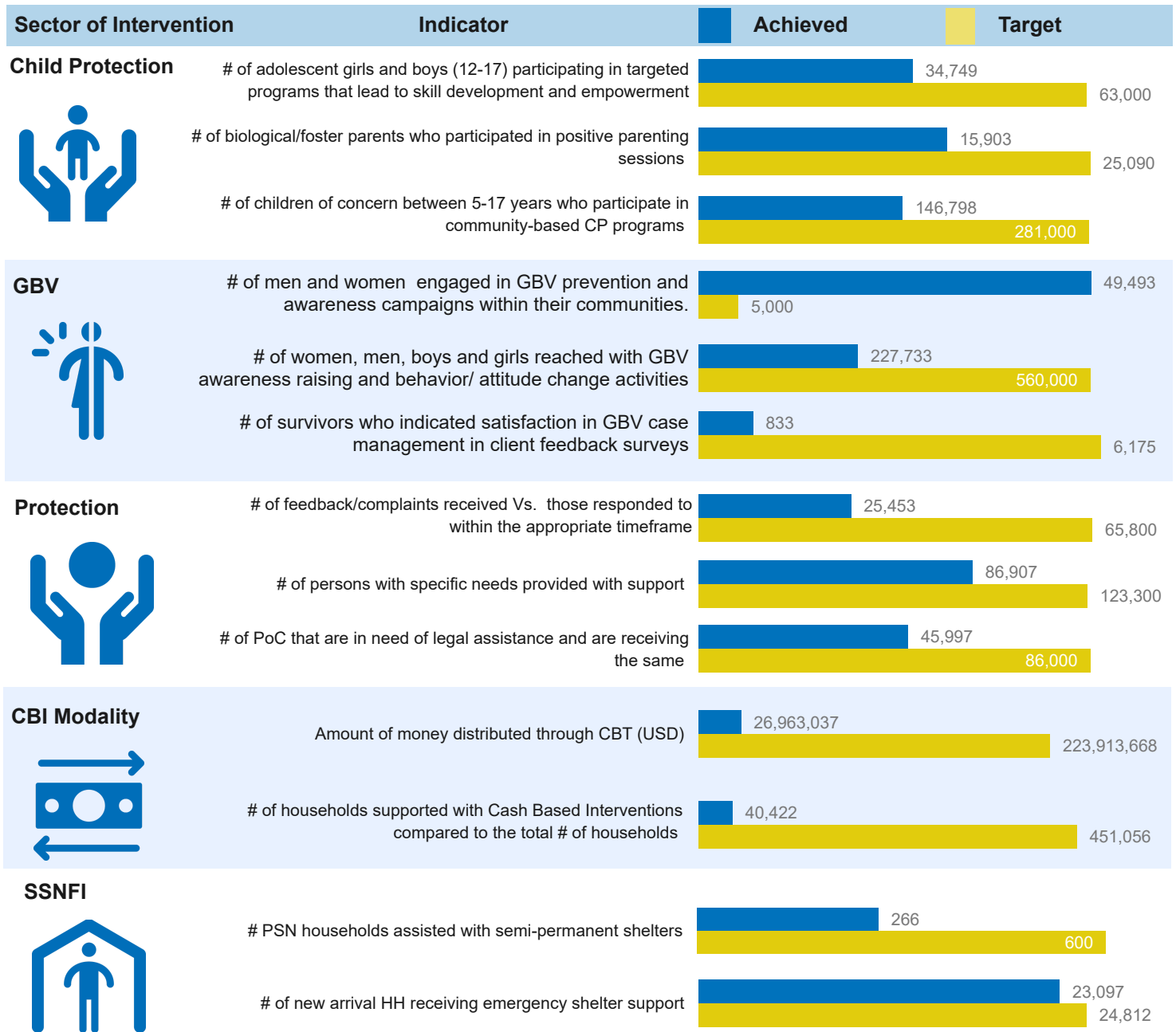


Food Security



Livelihoods & Resilience





Partner Presence by Q3 2024, UN Agencies and Government

National NGOs

ACORD, AFARD, AFI, AWYAD, BAYLOR, BSU, CEFORD, CEHURD, CEPAD, CSU, ELECU, HADS, HFU, IDI, JEEP, JESE, Kulika, MPK, MSU, Nsamizi, PALM Corps, PICOT, Post Bank, RLP, RICE-WN, REPSSI, ThriveGulu, TPO, TVRA, TTR, UCOBAC, URDMC, and WN-CARD

Refugee Led Organizations (RLOs)

I CAN SSD, Safe Home Africa, SSURA, TUMAINI, and YSAT

International NGOs

AARJ, ACAV, ACF, ACODEV, ADRA, AFOD, AHA, AIRD, Airtel, Alight, AMREF, APPCO, AVSI, AWR, AyudaEA, BfA, BRAC, C&D, CARE, Caritas Switzerland, CESVI, Child Voice, COVOID, CRS, CUAMM, DCA, DRC, ENABEL, Equity Bank, FCA, FH, FHA, FIDA/FMU, ForAfrika, FRC, GF, GNIU, HHA, HI, HIJRA, HYT, IRC, IsraAID, JRS, Kulika, LWF, Malteser, MC, MCCJ, MSF, MTI, NRC, Oxfam, Plan, RtP, SCI, SeedEffect, Swisscontact SHA, TRI, URCS, VE, VSO, WCC, WCH, WHH, WIU, WMU, WVI, WYO, and ZOA

UN Agencies

FAO, ILO, IOM, UNFPA, UNHCR, UNICEF, UNOPS, UNWOMEN, WFP, and WHO

Government

Adjumani DLG, Isingiro DLG, Kamwenge DLG, KCCA, Kikuube DLG, Kiryandongo DLG, Koboko DLG, Kyegegwa DLG, Lamwo DLG, Madi-Okollo DLG, NARO, NFA, Obongi DLG, OPM, Terego DLG, and Yumbe DLG