

**2,121,580** TOTAL FORCIBLY DISPLCED PERSONS

**281,488** CENTRAL AFRICAN REFUGEES

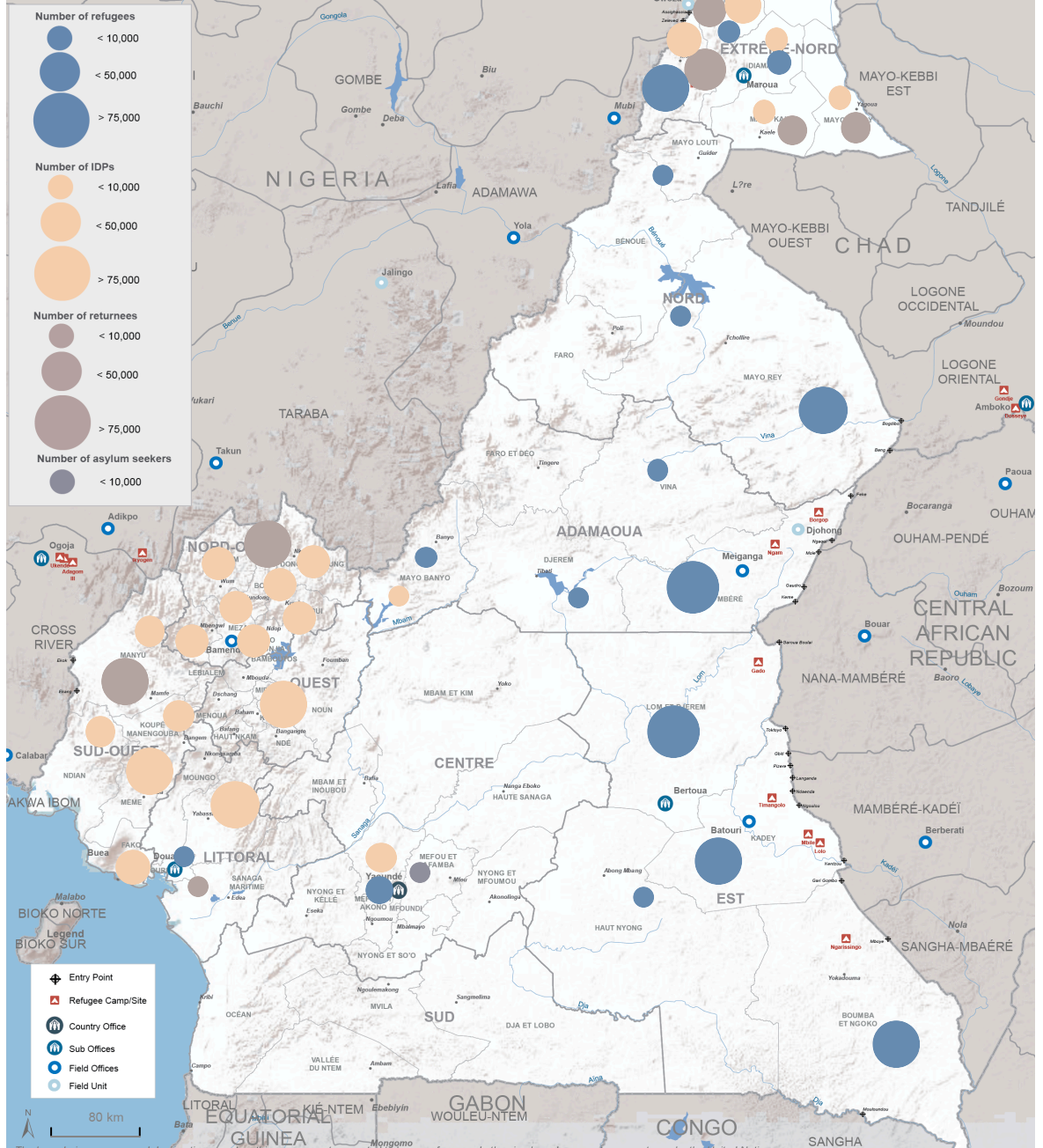
**125,419** NIGERIAN PERSONS

**3,304** REFUGEES OTHERS NATIONALITIES

**16,050** ASYLUM SEEKERS

**1,036,775** INTERNALLY DISPLCED PERSONS (IDPs)

**658,544** RETURNEES IDPs



The boundaries, names, and designations used on this map are not warranted to be error free nor do they imply endorsement or acceptance by the United Nations.

Returnees & IDPs: Source: IOM OCHA  
 Refugees & Asylum Seekers: Source: UNHCR

for more information, please contact Claudric DE KALAMBAK (nguenade@unhcr.org)