

CAMEROON: LOCATIONS OF FORCIBLY DISPLCED PERSONS (January 2025)

2,123,229 TOTAL FORCIBLY DISPLCED PERSONS

281,865 CENTRAL AFRICAN REFUGEES

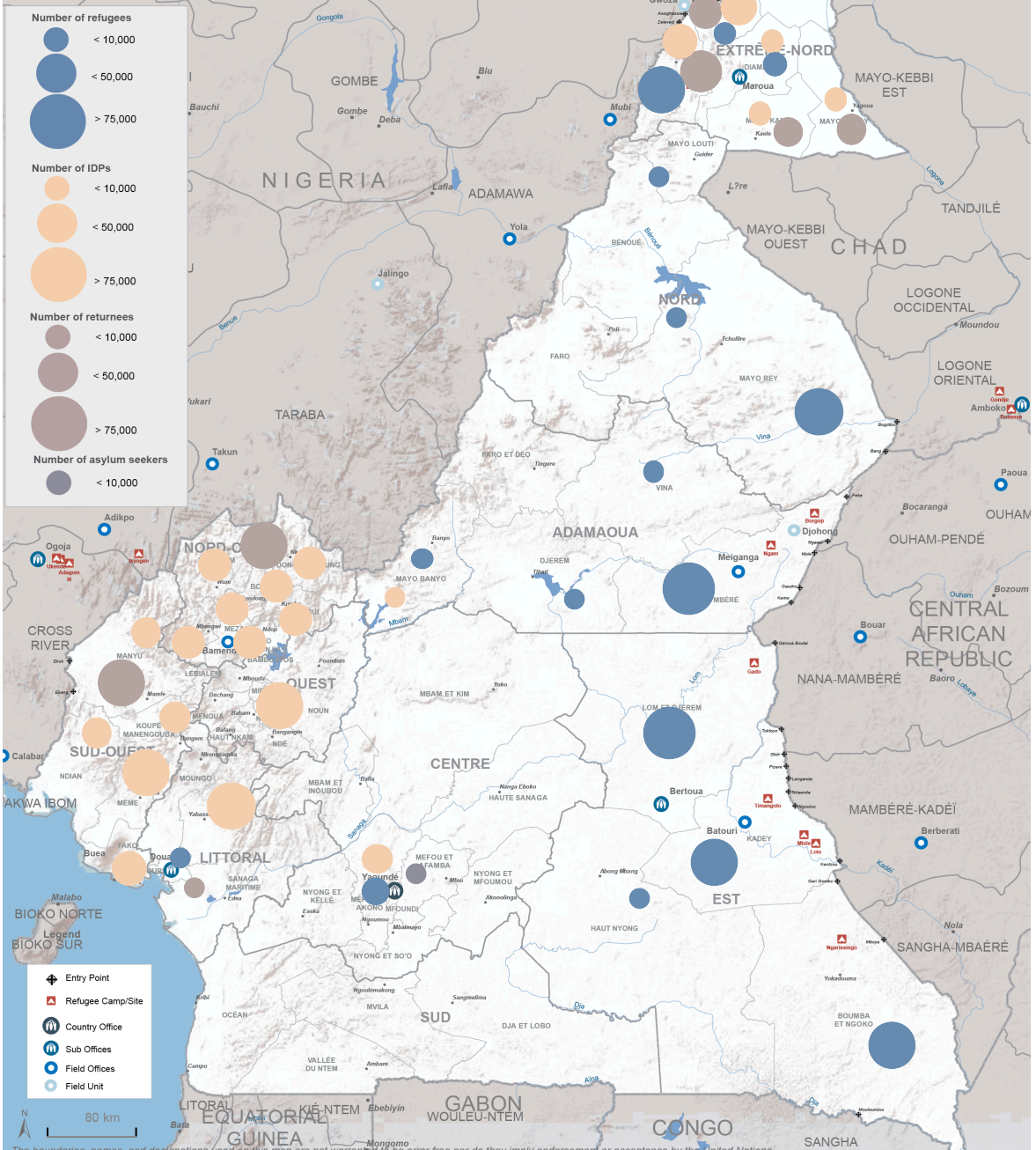
125,788 NIGERIAN PERSONS

3,347 REFUGEES OTHERS NATIONALITIES

16,910 ASYLUM SEEKERS

1,036,775 INTERNALLY DISPLCED PERSONS (IDPs)

658,544 RETURNEES IDPs



The boundaries, names, and designations used on this map are not warranted to be error free nor do they imply endorsement or acceptance by the United Nations.

Returnees & IDPs: Source: IOM, OCHA
Refugees & Asylum Seekers: UNHCR

for more information, please contact Claudric DE KALAMBAK (nguenade@unhcr.org)