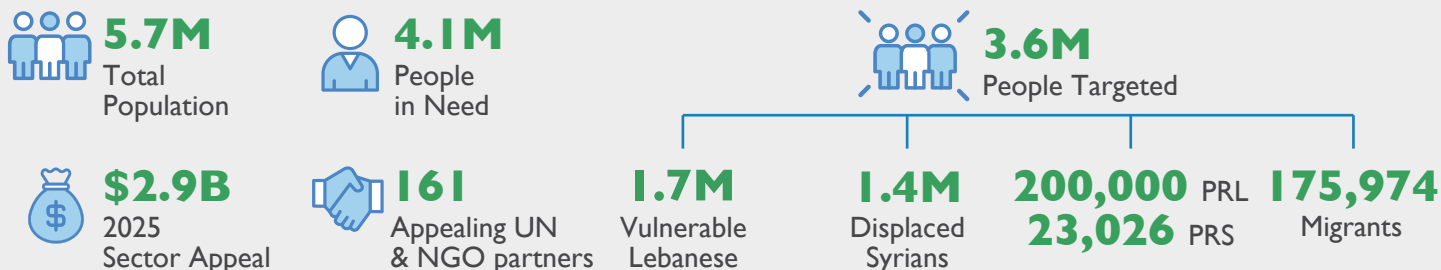


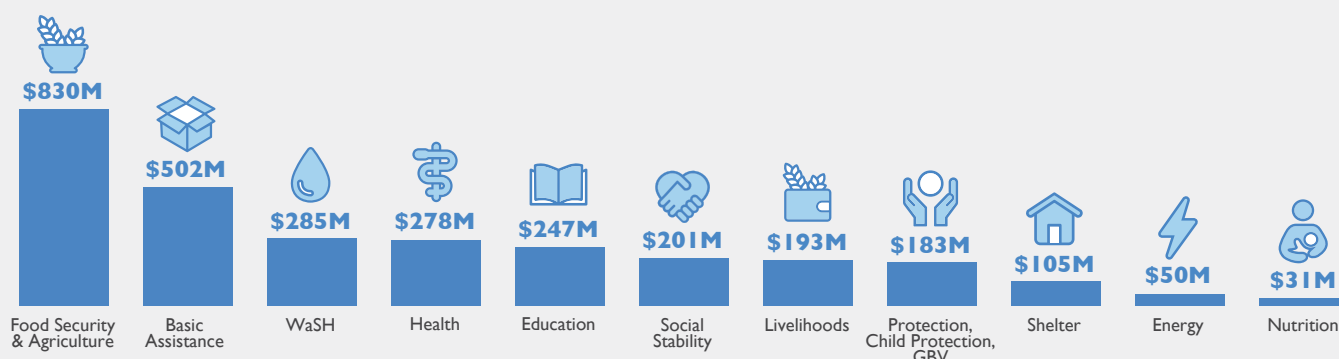
2025 Planning Figures










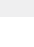

Strategic Objectives

-  **Provide immediate humanitarian assistance to vulnerable populations to ensure critical needs are met.**
-  **Ensure protection of the vulnerable populations.**
-  **Support service provision through national systems including national rapid response capacity.**
-  **Reinforce Lebanon's economic, social, and environmental stability.**

2025 Funding Requirement by Sector

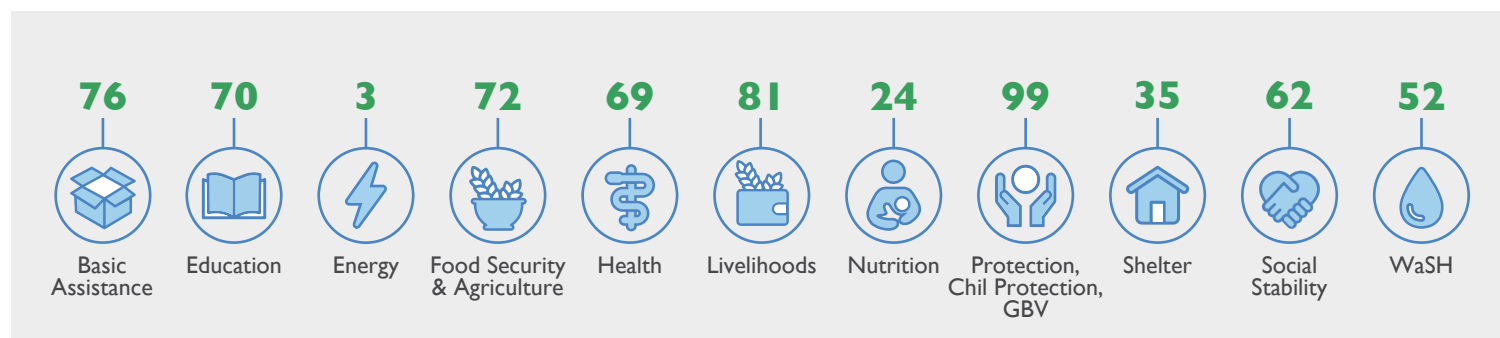


2025 Population Targets by Sector*

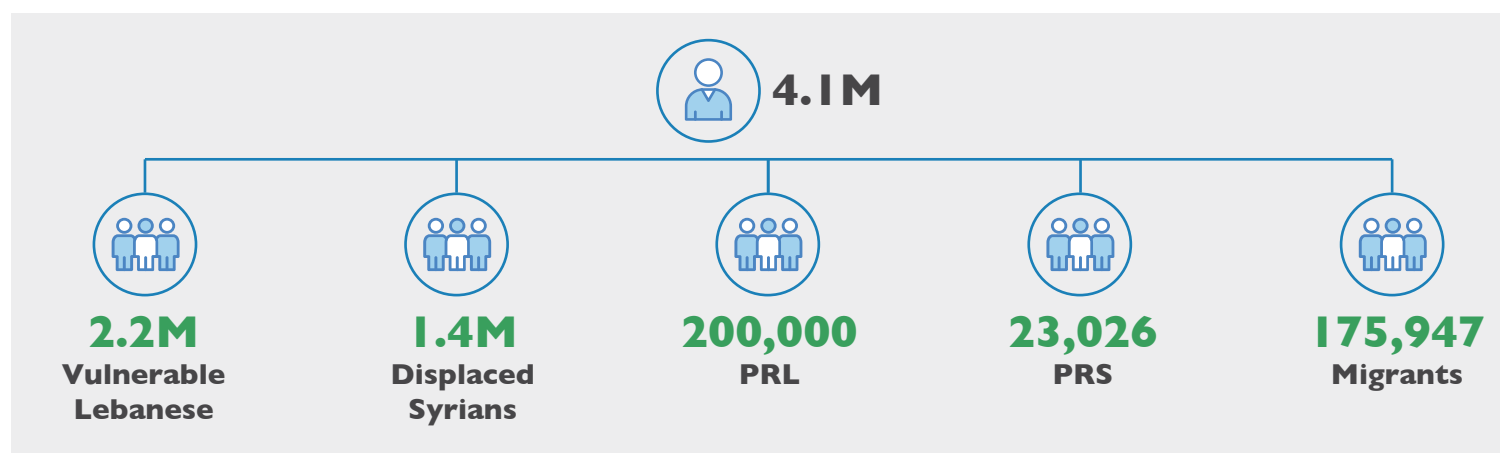
Sectors	People Targeted	Vulnerable Lebanese	Displaced Syrians	PRL	PRS	Migrants	Others
 Basic Assistance	2,636,042	1,142,102	1,261,355	162,000	23,026	35,189	12,370
 Education	981,531	571,653	349,800	50,508	6,177	3,393	0
 Energy	1,140,000	855,000	285,000	0	0	0	0
 Food Security & Agriculture	2,595,205	1,142,102	1,261,355	104,500	12,031	75,217	0
 Health	2,491,343	1,098,220	1,260,000	20,000	23,026	90,097	0
 Livelihoods	76,701	65,483	10,651	307	260	0	0
 Nutrition	923,617	658,870	218,798	22,770	2,854	20,325	0
 Protection, Child Protection, GBV	1,502,655	516,395	856,533	59,052	19,206	44,969	6,500
 Shelter	613,908	195,975	382,600	24,500	3,145	7,688	0
 Social Stability	3,502,685	1,603,712	1,500,000	200,000	23,026	175,947	0
 WaSH	2,325,666	1,693,666	570,000	40,000	12,000	10,000	0

*These numbers will be revised down according to 1.4M Displaced Syrians in light of ongoing population movement by the first quarter of the year.

Appealing Partners by Sector



People in Need



People Targeted

