



**LEBANON
Response Plan**

LRP Partners Update Meeting

February 21, 2025



Opening Remarks

ISCG Co-Chairs

Agenda

- 1. LRP Update**
- 2. US Funding Update**
- 3. 2024 End of Year Reporting**
 - EoY Funding Update
 - EoY Support to Lebanese Dashboard
- 4. AoB**
 - Reminder on ActivityInfo Reporting
 - Lebanon Country Page Overview



LRP Update

Kristin Arthur, Senior Inter-Agency Coordination Officer (UNHCR)

LRP 2025 Overview

Strategic Objectives



Provide immediate humanitarian assistance to vulnerable populations to ensure critical needs are met.



Ensure protection of the vulnerable populations.



Support service provision through national systems including national rapid response capacity



Reinforce Lebanon's economic, social, and environmental stability.

16 October 2024 the LRP 2024-2025 was endorsed by the LRP Steering Committee

LRP 2025 Overview

At a Glance



5.7M
Total
Population

2025 Planning Figures



4.1M
People in Need

2.2M Vulnerable Lebanese
1.5M Displaced Syrians
200,000 PRL
23,026 PRS
175,947 Migrants



3.6M
People Targeted

1.7M Vulnerable Lebanese
1.5M Displaced Syrians
200,000 PRL
23,026 PRS
175,974 Migrants



161 Appealing UN and NGO partners

76



Basic Assistance

70



Education

3



Energy

72



Food Security & Agriculture

69



Health

81



Livelihoods

24



Nutrition

99



Protection, Child Protection, GBV

35



Shelter

62



Social Stability

52



WaSH

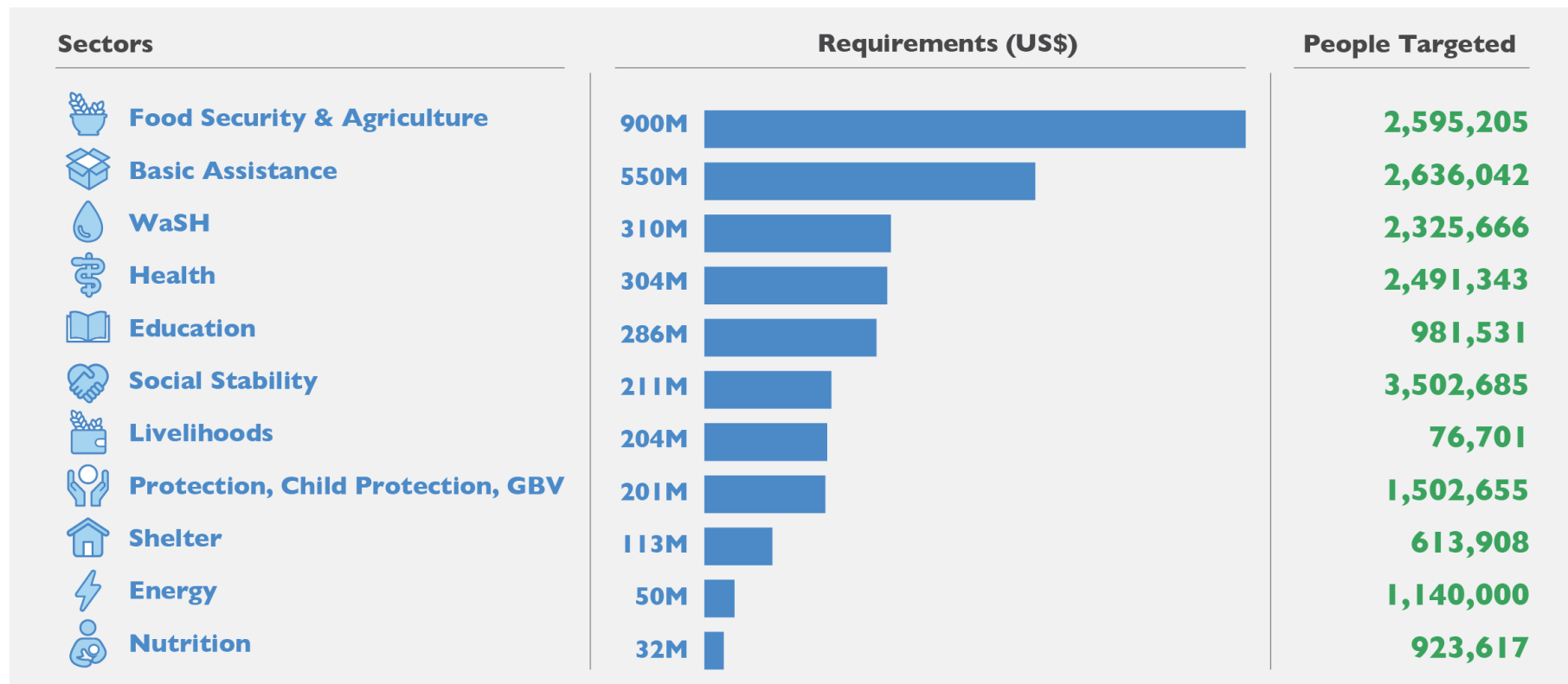


\$3.01B
2025 Appeal

LRP 2025 Overview

Target & Funding Requirement by Sector












2025 Target & Funding Requirement by Sector



LRP 2025 Overview

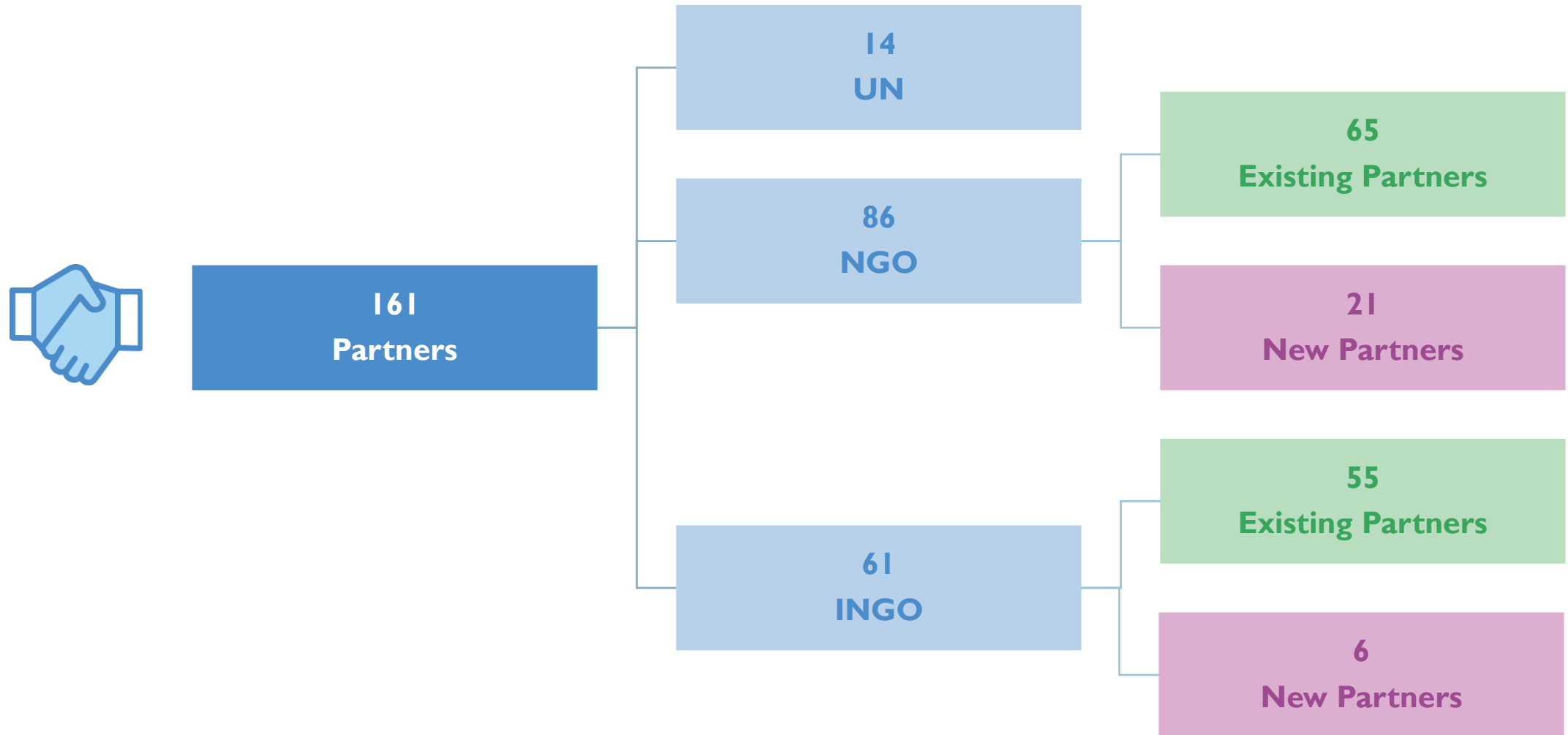
Population Targets by Sector

2025 Population Targets by Sector

| Sectors | People Targeted | Vulnerable Lebanese | Displaced Syrians | PRL | PRS | Migrants | Others |
|--|-----------------|---------------------|-------------------|---------|--------|----------|--------|
|  Basic Assistance | 2,636,042 | 1,142,102 | 1,261,355 | 162,000 | 23,026 | 35,189 | 12,370 |
|  Education | 981,531 | 571,653 | 349,800 | 50,508 | 6,177 | 3,393 | 0 |
|  Energy | 1,140,000 | 855,000 | 285,000 | 0 | 0 | 0 | 0 |
|  Food Security & Agriculture | 2,595,205 | 1,142,102 | 1,261,355 | 104,500 | 12,031 | 75,217 | 0 |
|  Health | 2,491,343 | 1,098,220 | 1,260,000 | 20,000 | 23,026 | 90,097 | 0 |
|  Livelihoods | 76,701 | 65,483 | 10,651 | 307 | 260 | 0 | 0 |
|  Nutrition | 923,617 | 658,870 | 218,798 | 22,770 | 2,854 | 20,325 | 0 |
|  Protection, Child Protection, GBV | 1,502,655 | 516,395 | 856,533 | 59,052 | 19,206 | 44,969 | 6,500 |
|  Shelter | 613,908 | 195,975 | 382,600 | 24,500 | 3,145 | 7,688 | 0 |
|  Social Stability | 3,502,685 | 1,603,712 | 1,500,000 | 200,000 | 23,026 | 175,947 | 0 |
|  WaSH | 2,325,666 | 1,693,666 | 570,000 | 40,000 | 12,000 | 10,000 | 0 |

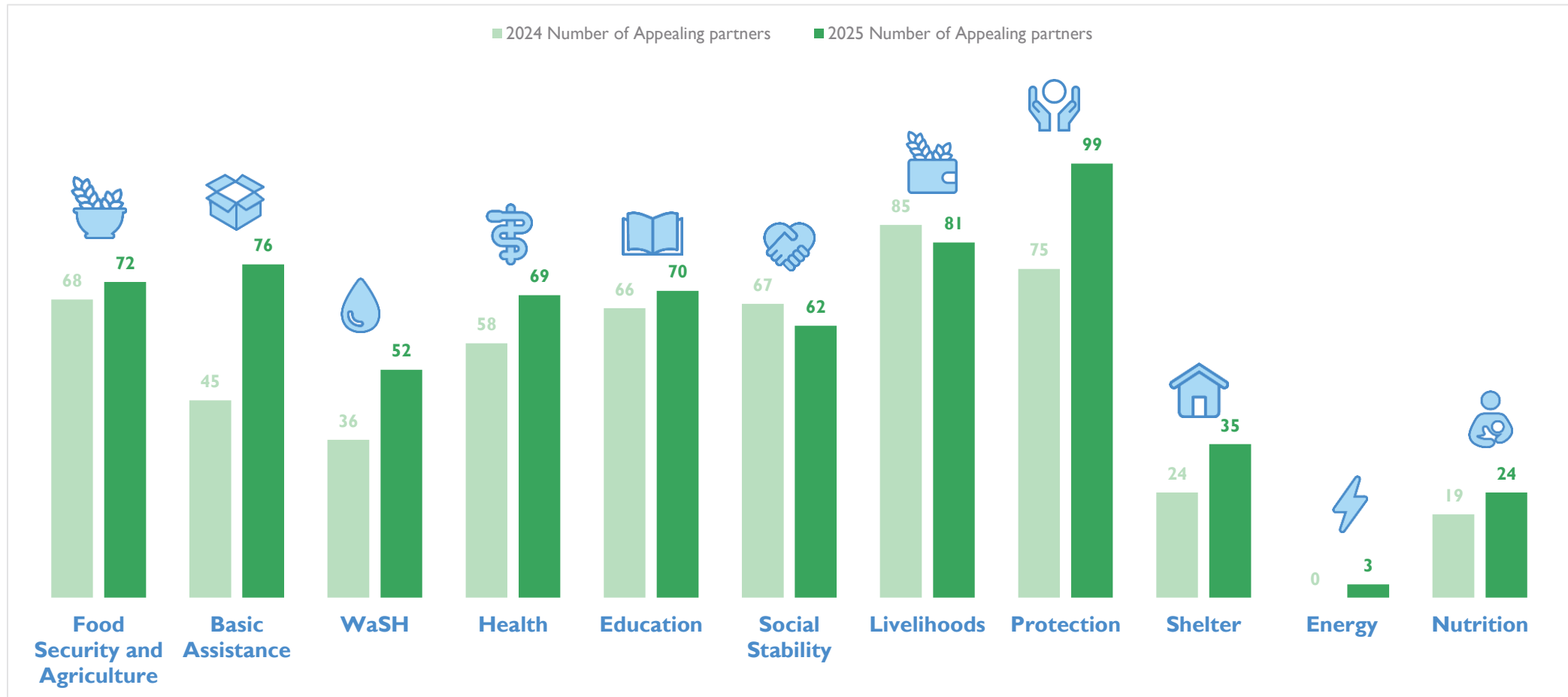
LRP 2025 Overview

LRP 2025 Partners



LRP 2025 Overview

Number of Appealing Partners 2024 vs. 2025



LRP 2025 Overview

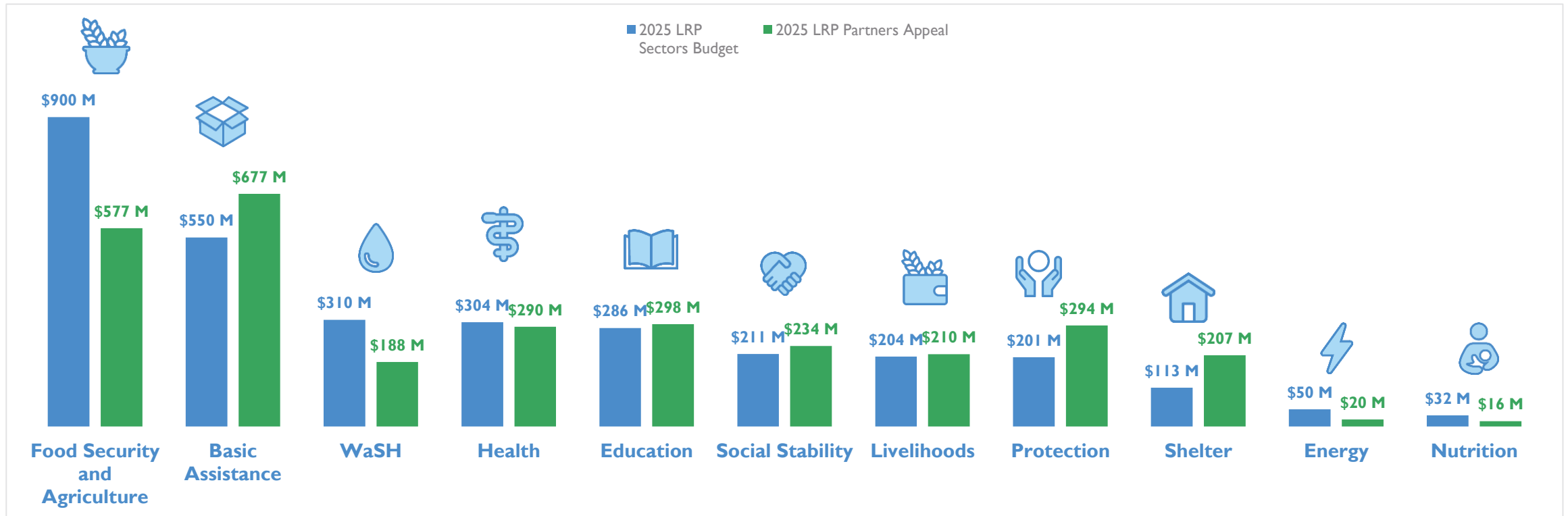
Funding Requirement

 **\$3.16 B**

Sector Requirement

 **\$3.01 billion**

Partner Appeal



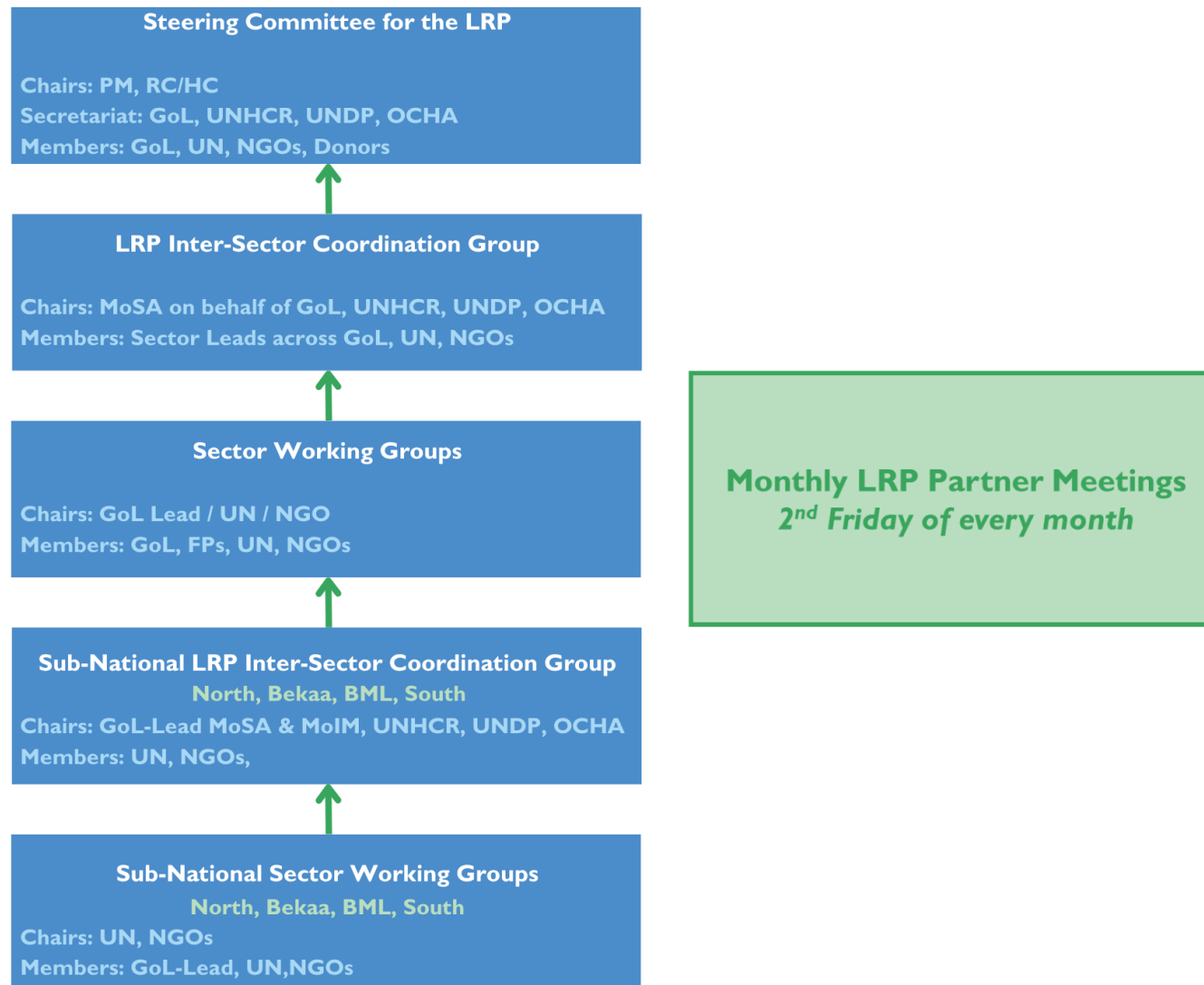
2025 LRP

Observations

- Target to reflect increased needs among Lebanese in some cases balanced by a reduced target for Syrians.
- Budgets generally increased, due to the increased needs/targets or the inclusion of additional activities to be undertaken.
- In some cases, the budget decreased due to a multi-sectorial approach, system-wide approach or a focus on a specific population group.
- All strategies finalised and endorsed by their respective line Ministry. Overall, the strategies maintained the existing balance between the Humanitarian and Stabilization component with some sectors slightly increasing the stabilization component (BA, LH, Shelter, Social Stability, Energy and WaSH).

2025 LRP

Governance and Coordination Architecture – Endorsed by the Steering Committee



2025 LRP

Sector Coordination Structure

| | Basic Assistance | Education | Energy | Food Security & Agriculture <i>*Cluster</i> | Health | Nutrition | Livelihoods | Protection | Shelter | Social Stability | WaSH |
|-----------|------------------|------------------------------|--------|--|--------------|-----------|---------------------|------------------------------|---------|-----------------------------------|--------|
| Ministry | MoSA | MEHE | MoEW | MoA | MoPH | MoPH | MoSA MoL MoET | MoSA | MoSA | MoSA MoIM | MoEW |
| UN Agency | UNHCR | UNICEF | UNDP | WFP FAO | UNHCR WHO | UNICEF | UNDP | UNHCR | UNHCR | UNDP UNHCR | UNICEF |
| NGO | ACF Spain | Save the Children | | CARE | AMEL | IOCC | Mercy Corps | NRC | NRC | | WVI |
| | | | | | | | | GBV WG UNFPA UNHCR | | Solid Waste Management Task Force | |
| | | | | | | | | CP WG UNICEF TDH-Italy | | MoE | |
| UN Agency | UNHCR IOM | Logistics <i>*Cluster</i> | | | | | | | | | WFP |

**Adjustments / additions made following the significant escalation in hostilities affecting Lebanon.*

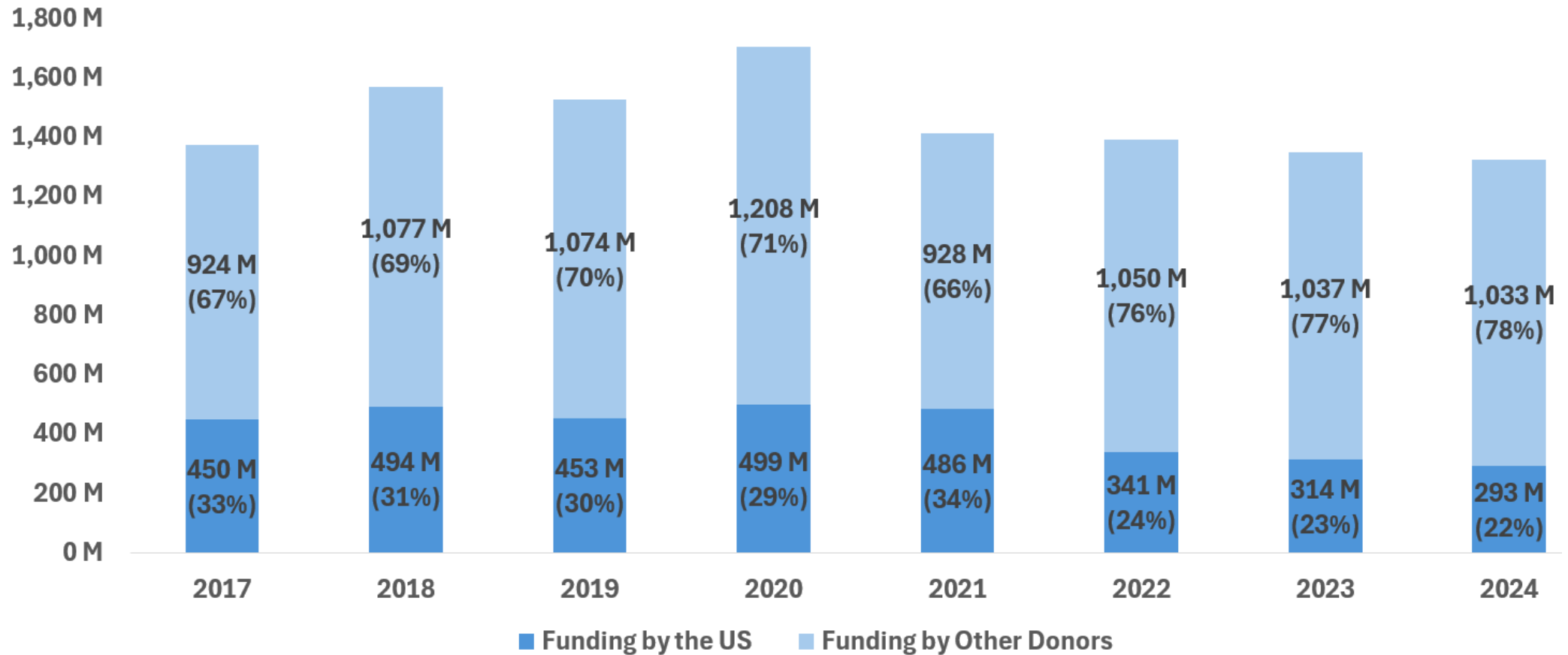


US Funding Update

Rawad El Zir, Head of Coordination (OCHA)

US Funding Update

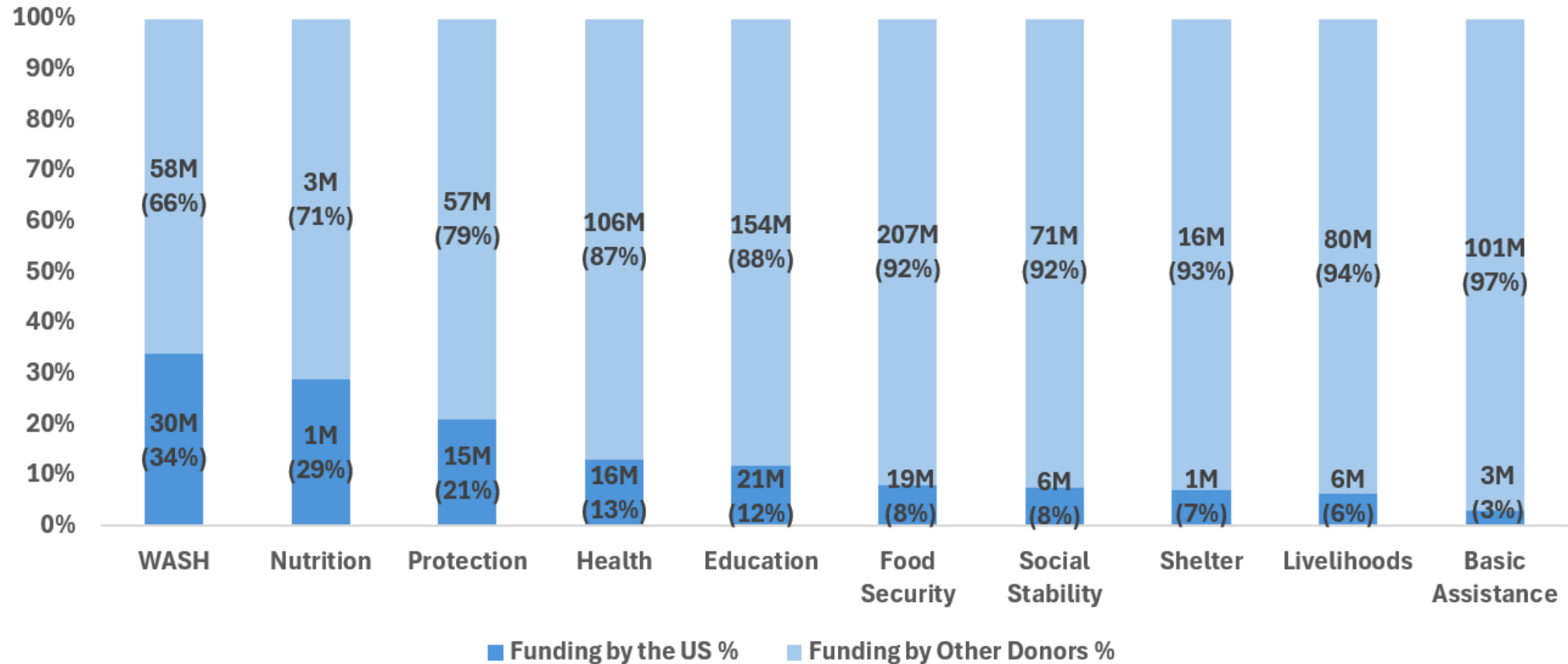
Donor Funding Share 2018 – 2024



**Funding data is based on Lebanon Aid Tracking data from 2017 – 2024.*

US Funding Update

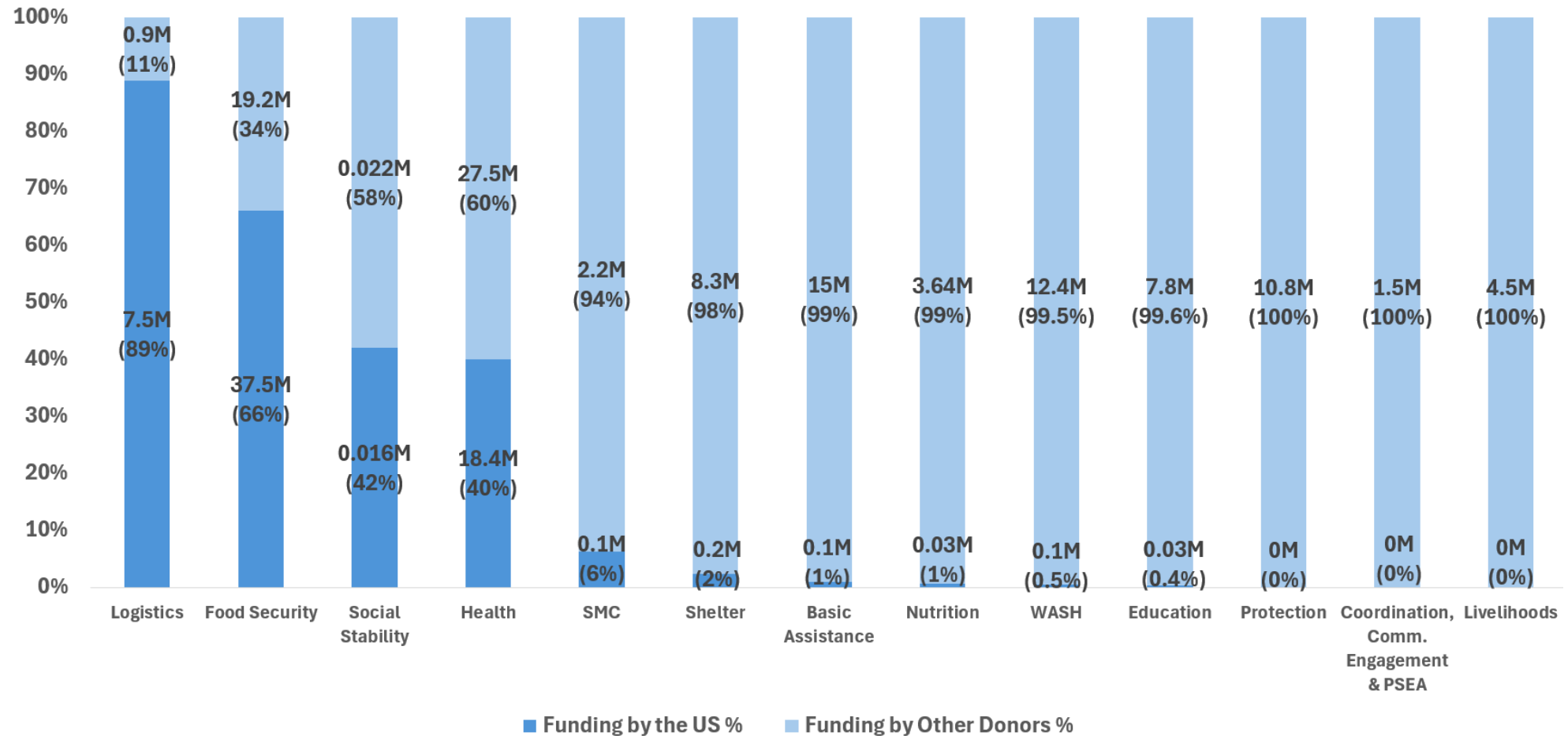
US Funding Against Total Funding Received by Sector in 2024



*Funding data is based on Lebanon Aid Tracking data up to 16 December 2024.

US Funding Update

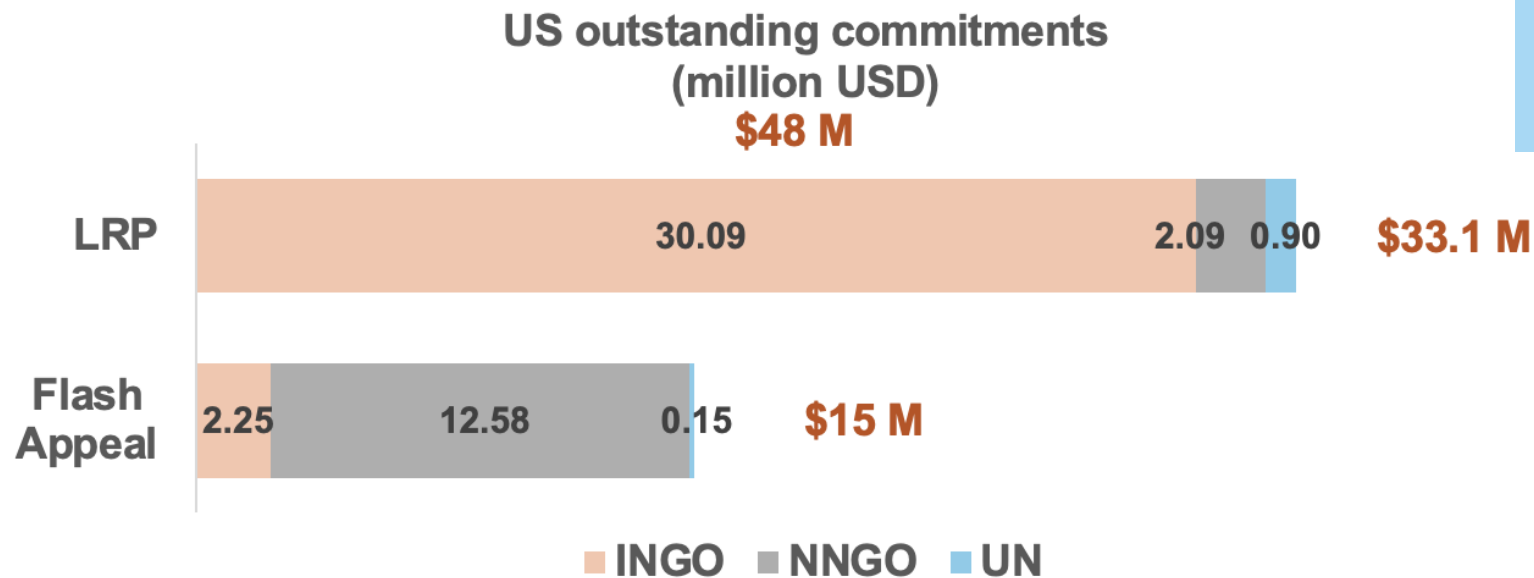
US Funding Against Total Funding Received by Sector in 2024



*Funding data is based on Lebanon Aid Tracking data up to 16 December 2024.

US Funding Update

Reported US Outstanding Commitments for 2025



At least 13 INGOs, 5 NNGOs and 1 UN agency have US outstanding commitments for 2025.



**This is based on available figures in LAT from 2024 reporting as of 10 Feb. The LAT will be open for 2025 funding reporting on 17 Feb.*



2024 End of Year Reporting

Stephanie Laba, Inter-Agency Coordination Officer (UNHCR)

Raffi Kouzoujian, Assistant Information Management Officer (UNHCR)



EoY Funding Update

Raffi Kouzoujian, Assistant Information Management Officer (UNHCR)

End-of-Year Funding Update

Overview Based on Partners Reporting

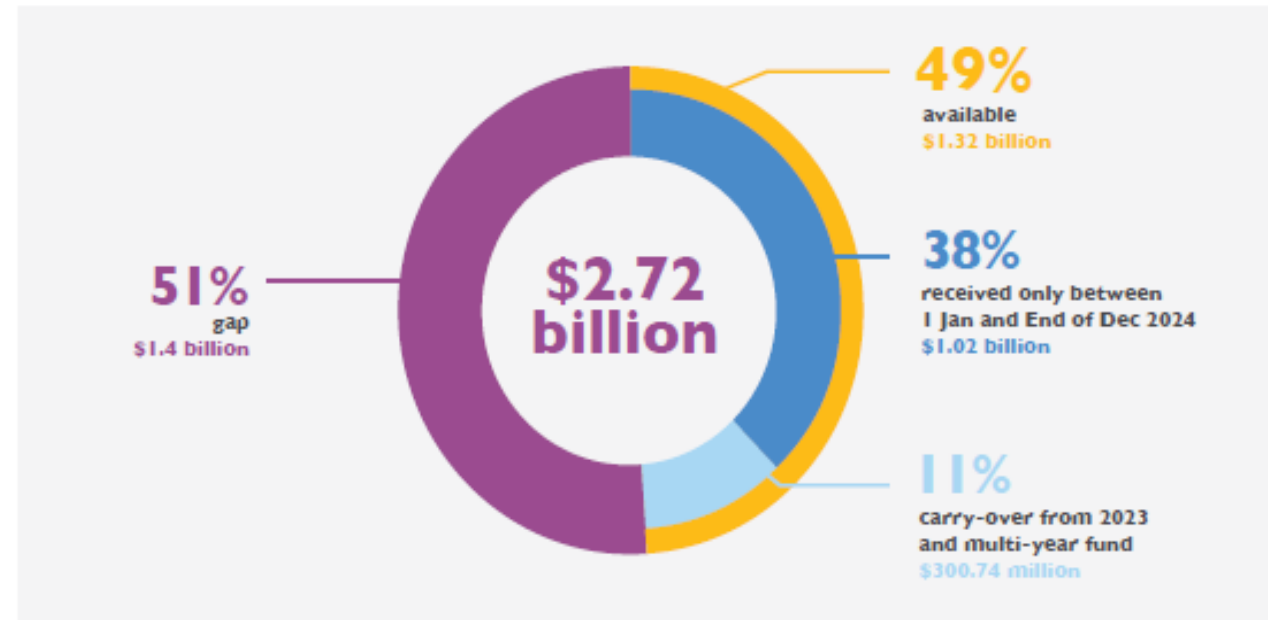
105 Partners Reported
54 Different Donors

Available Funds*: 1323.6 M of the 2.72 B Appeal

- Received: 1022.9 M
- Carry-over: 300.7 M

Distribution of Funds by Agency Type:
UN 74.6%; INGO 23%; and NNGO 2.4%

LRP 2024 Funding Available - Based on Partner Reporting

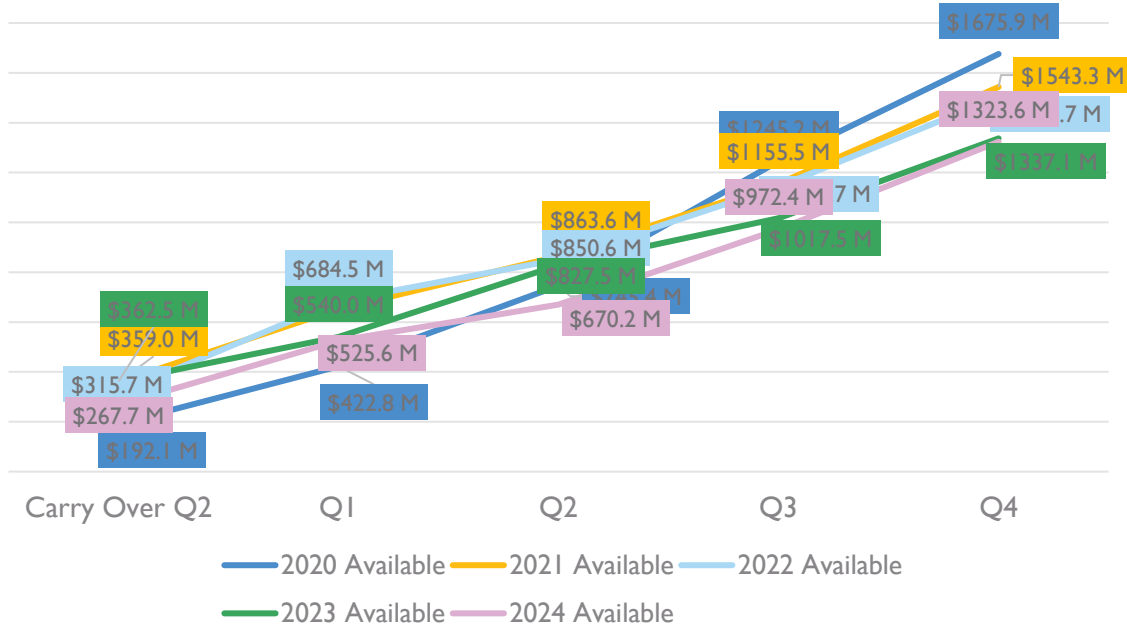


*60.2 M increase from the same period in 2023.

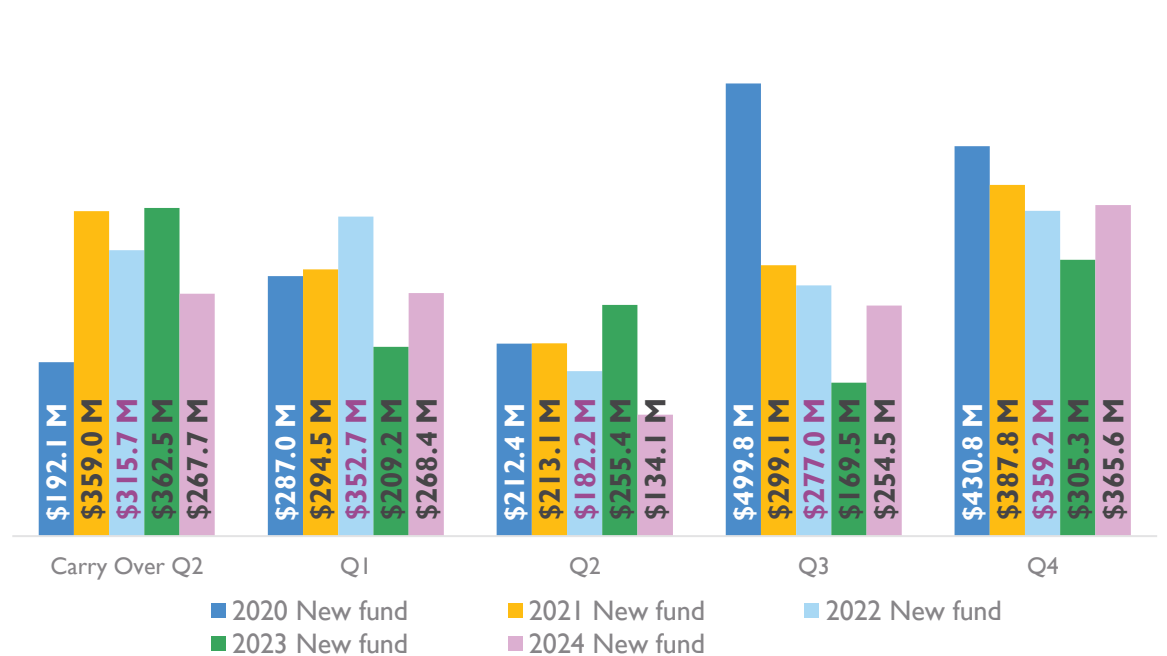
End-of-Year Funding Update

Funding Trend 2020 to 2024

2020 - 2024- Cumulative Available Funding per Quarter



2020 - 2024: New Funding by Quarter

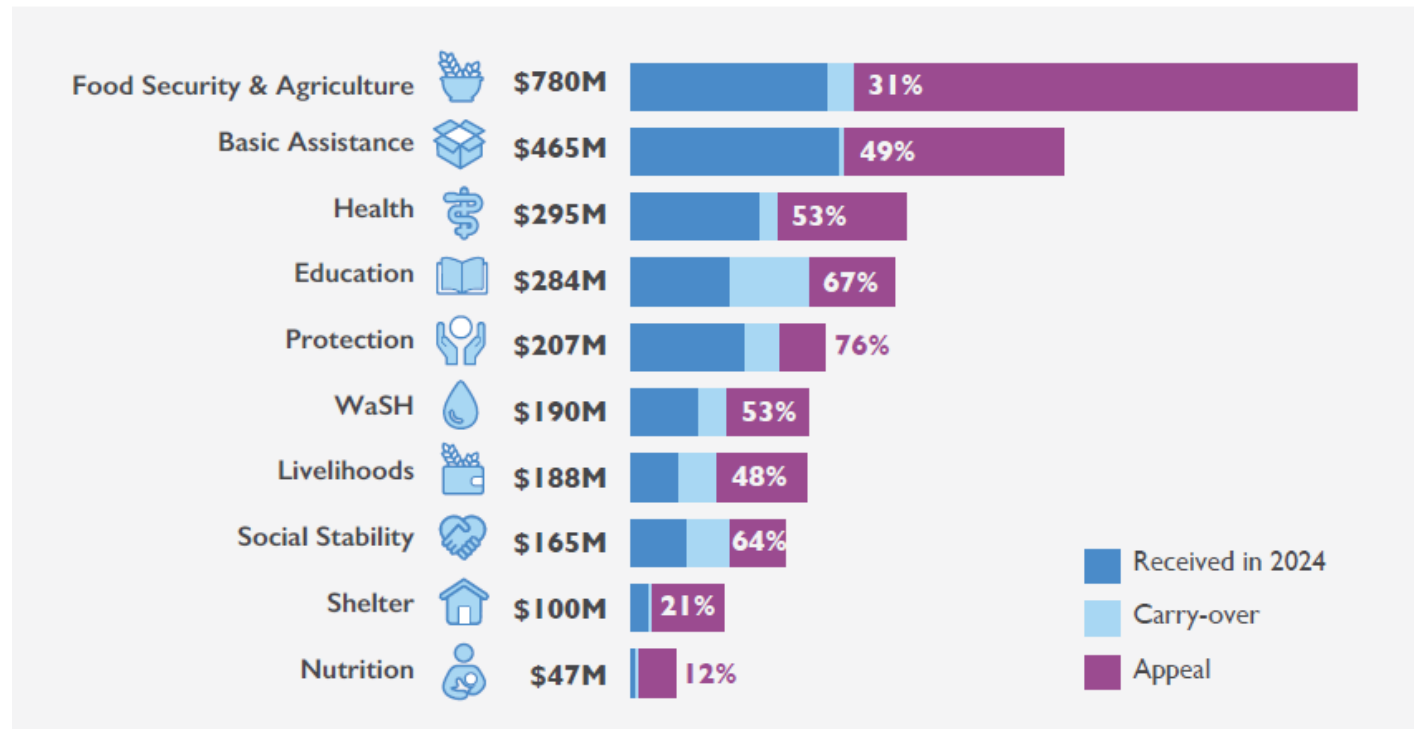


End-of-Year Funding Update

Funding Received and Allocated by Sector

Protection (76%), Education (67%), and Social Stability (64%) are the **highest** funded sectors compared to the appeal.

Nutrition (12%), Shelter (21%), and Food Security & Agriculture (31%) are the **lowest** funded sectors compared to the appeal.






EoY Support to Lebanese Dashboard


Stephanie Laba, Inter-Agency Coordination Officer (UNHCR)


2024 End of Year Reporting

Support to Lebanese


Basic Assistance


 **77,515**
Lebanese households accessed regular, unrestricted and unconditional cash assistance through National Poverty Targeting Programme and NGOs

 **942**
Lebanese individuals with specific vulnerabilities receiving cash assistance through focused programmes (Small Scale)

 **71,343**
Lebanese households accessed emergency cash assistance

 **2,900**
Lebanese households received seasonal cash assistance


 **12,500**
Lebanese with specific vulnerabilities received social grants (National Disability Allowance)

 **62,000**
Lebanese were provided with in-kind assistance (blankets / pillows / mattresses / mats / clothing kits / heaters / kitchen sets / solar lamps)

Food Security & Agriculture

 **453,337**
Lebanese benefitted from cash assistance through the Food Security and Agriculture sector


 **261,638**
Lebanese received in-kind food assistance


 **12,400**
Small-scale farming households and members were supported with training, technical assistance, and inputs to improve agricultural practices

 **5,301**
Lebanese benefited from support provided to households in accessing labour/training in the agricultural sector

Livelihoods

 **18,656**
Lebanese MSMEs were supported with cash and in-kind grants and access to financial services


 **6,215**
Vulnerable Lebanese engaged with employability skills development

 **4,692**
Vulnerable Lebanese were engaged in public works

2024 End of Year Reporting


Support to Lebanese

Education


 **261,979**
Lebanese children were able to enroll in public schools, through support to public schools by partners, in the 2023-2024 school year

 **27,587**
Lebanese boys and girls, received additional support through either retention support


 **30,820**
Lebanese boys and girls received cash for education during the 2023-24 school year


 **63,779**
Lebanese boys and girls received meals or snacks in public schools

Health


 **650,294**
Lebanese received acute disease medication

 **1,369,177**
Subsidized health consultations were provided to vulnerable Lebanese


 **71,407**
Mental health consultations were provided to vulnerable Lebanese


 **146**
MoPH-PHCCs are currently supported by partners

Nutrition


 **145,839**
Lebanese caregivers and women reached with education and awareness raising activities on breastfeeding, complementary feeding, childhood development and healthy nutrition (1.1.B)


 **79,575**
Lebanese children under 5 received Vitamin A (1.3.B)


 **33,003**
Lebanese Pregnant Lactating Women (PLW) were screened for acute malnutrition at primary healthcare centers(3.2.A) and community(3.2.B) levels


 **217,020**
Lebanese children under 5 were screened for acute malnutrition at PHC(1.4.B) and at community(1.4.C) levels

WaSH

 **308,571**
Estimated number of Lebanese with improved access to safe water for drinking and domestic use through rehabilitation and augmentation of water supply systems

 **881,000**
Estimated number of Lebanese maintaining consistent and reliable access to water through minor repairs and operational support to Water Establishment-managed systems

 **994,500**
Estimated number of Lebanese benefited from supporting Water Establishments with rehabilitation and maintenance of wastewater treatment plants and related infrastructure


 **208,300**
Lebanese experienced a WaSH behavior change session/activity


2024 End of Year Reporting

Support to Lebanese


Protection


 **61,465**
Lebanese women, girls, boys and men benefited from case management services, including basic PSS and cash assistance as well targeted support for older persons, persons with disability and those requiring MHPSS services


 **92,325**
Lebanese women, girls, boys and men participated in protection activities and awareness session on protection services including GBV and community-based child protection activities


 **24,855**
Lebanese women, girls, boys and men joined social behavior change and GBV prevention programs and 10,340 women and girls received dignity kits to support menstrual hygiene needs

Shelter


 **3,396**
Vulnerable Lebanese were supported with cash-for-rent

 **3,443**
Vulnerable Lebanese were supported with shelter upgrades

 **3,281**
Vulnerable Lebanese benefited from minor repairs of their shelters


 **78,387**
Displaced Vulnerable Lebanese benefited from Cash for Shelter due to the South Border Hostilities

Social Stability

 **64**
Achieved basic service delivery projects including solid waste management

 **7,120**
Lebanese youths were empowered to cope positively and engage in community-based services and emergency response

 **75**
New conflict prevention mechanisms were established through municipalities, as well as, 48 CSOs were supported to mitigate tensions at the local level

 **110**
Municipalities were supported in partnership with the MoM and the ISF Academy, to enhance municipal police's service accountability and engagement with communities



AoB

AoB (I)

Reminder on ActivityInfo Reporting

The yearly **Reporting Calendar** ensures these products are finalized and circulated in a timely manner



ActivityInfo is the reporting tool used by response partners.



<https://www.activityinfo.org/login>

AoB (2)

Lebanon Country Page Overview



Lebanon Country Page: <https://data.unhcr.org/en/country/lbn>



Key Features:

- Population Data
- Sector Working Group pages
- Latest Documents
- Interactive Dashboards
- Featured Documents
- Links to resources/websites

Operational Data Portal | SITUATIONS | **COUNTRIES** | REGIONS | PARTNERS | Search | EN

Lebanon

Total Registered Refugees 755,426 (Source: UNHCR)

Households* 181,798 (Source: UNHCR)

IDPs in Lebanon 115,439 (Source: ICM DTM Mobility Snapshot)

Returning IDPs 868,947 (Source: ICM DTM Mobility Snapshot)

All Refugees by sublocation

| Location name | Source | Data date | Population |
|---------------|--------|-------------|---------------|
| Bekaa | UNHCR | 31 Dec 2024 | 37.4% 282,744 |
| North Lebanon | UNHCR | 31 Dec 2024 | 28.7% 216,781 |
| Beirut | UNHCR | 31 Dec 2024 | 22.8% 172,096 |
| South Lebanon | UNHCR | 31 Dec 2024 | 11.1% 83,805 |

Latest Documents

- Lebanon: LRP Partners Update Minutes of Meeting - 21 February 2025 (DOCUMENT | 30.00 KB | Download Count: 23)
- Lebanon Response Plan: Funding Update - End of Year (EoY) 2024 (As of December 2024) (DOCUMENT | 147.80 KB | Download Count: 41)

People Targeted

- 128,274 Migrants
- 33,026 PHL
- 200,000 PHL
- 1.7 million Vulnerable Lebanese
- 3.6 million Displaced Syrians
- 1.5 million Displaced Syrians

Lebanon Information Hub



Thank You