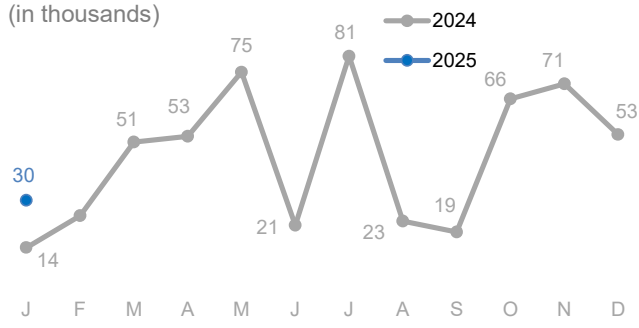


View the interactive dashboard here: <http://prmn-somalia.unhcr.org/>

TOTAL DISPLACEMENTS

30,000 in Jan
30,000 (Jan - Dec 2025)
552,000 (Jan - Dec 2024)

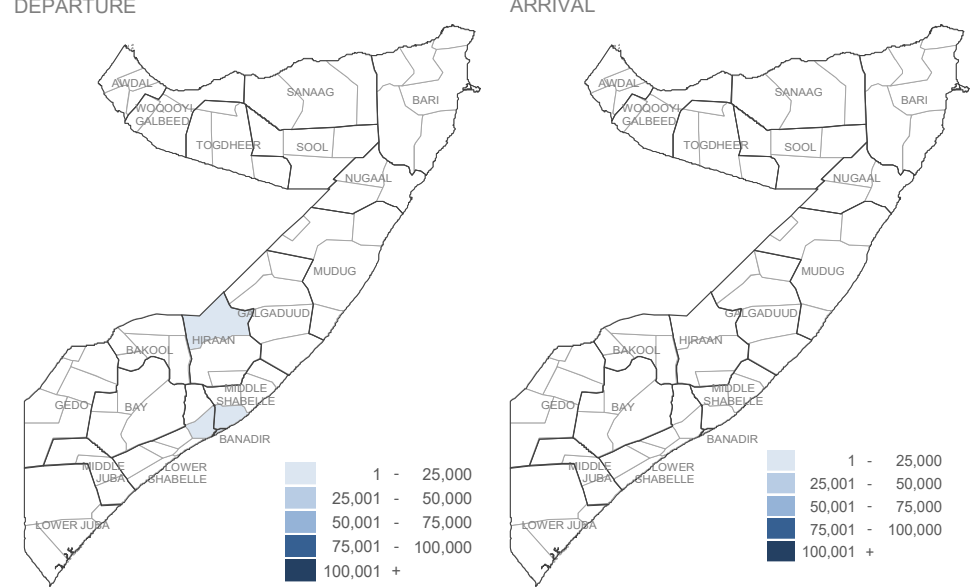
The UNHCR-led PSMN implemented in partnership with NRC reported **30,000** internal displacements in the month of January 2025. Out of these, **20,000** were caused by conflict or insecurity while **8,000** were displaced by drought. Approximately **2,000** were displaced due to other reasons



BY REGION (Jan - Dec 2025)

DEP	ARR
Awdal	
Bakool	820
Banadir	30
Bari	7,970
Bay	760
Galgaduud	600
Gedo	230
Hiraan	570
Lower Juba	8,920
Lower Shabelle	5,480
Middle Juba	830
Middle Shabelle	1,480
Mudug	180
Nugaal	
Sanaag	2,360
Sool	
Togdheer	
Woq. Galbeed	

BY DISTRICT (Jan - Dec 2025)

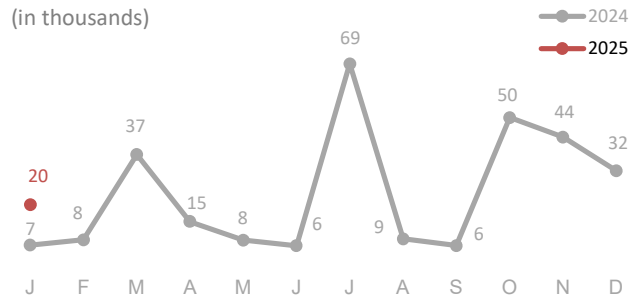


CONFLICT / INSECURITY DISPLACEMENTS

20,000 in Jan
20,000 (Jan - Dec 2025)
290,000 (Jan - Dec 2024)

Approximately 50% of displacement arrivals in January 2025 owing to Conflict/Insecurity occurred in 2 districts, **Banadir** (5350) and **Qandala** (4300).

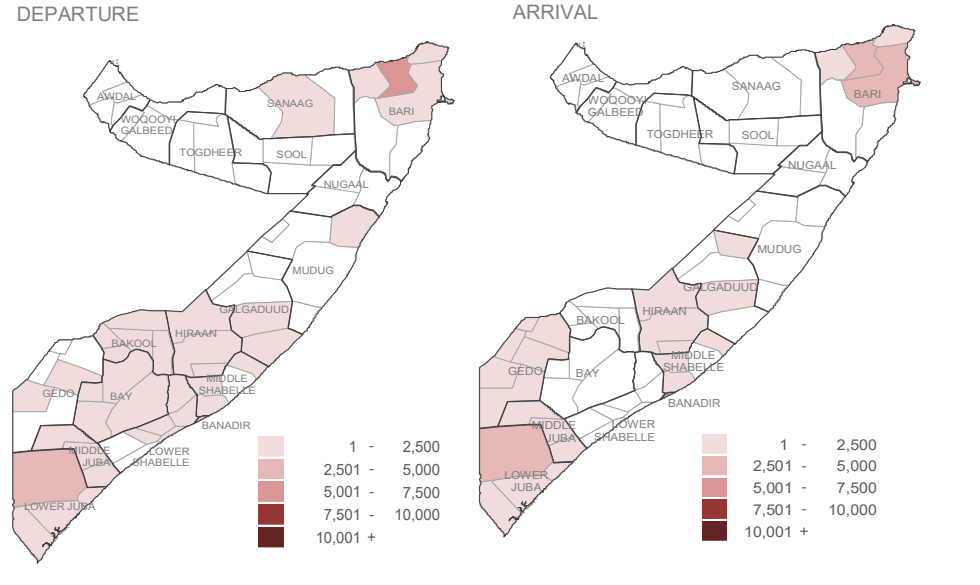
Major displacement departures related to Conflict/Insecurity also occurred in **Qandala** (7000) in Mudug region.



BY REGION (Jan - Dec 2025)

DEP	ARR
Awdal	
Bakool	820
Banadir	10
Bari	7,750
Bay	470
Galgaduud	180
Gedo	90
Hiraan	430
Lower Juba	3,030
Lower Shabelle	5,190
Middle Juba	820
Middle Shabelle	70
Mudug	10
Nugaal	
Sanaag	1,630
Sool	
Togdheer	
Woq. Galbeed	

BY DISTRICT (Jan - Dec 2025)

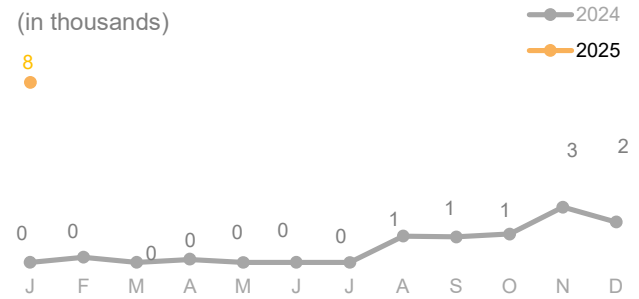


DROUGHT RELATED DISPLACEMENTS

8,000 in Jan
8,000 (Jan - Dec 2025)
8,000 (Jan - Dec 2024)

The highest displacement arrivals due to drought in January occurred in **Kismayo** (5850) **Banadir** (1500) districts.

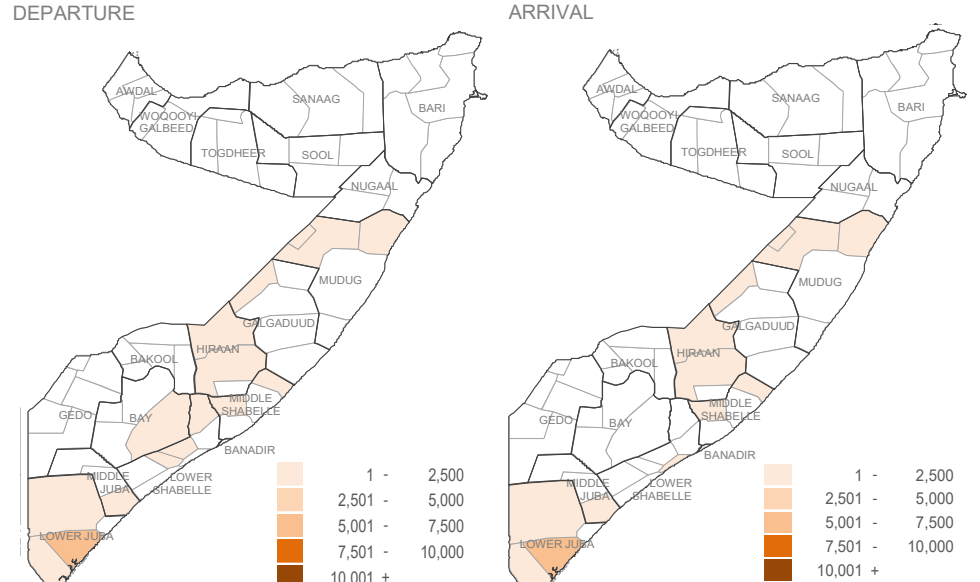
Major displacement departures owing to drought also occurred in **Kismayo** (5850) and **Adan Yabaal** (1300) districts.



BY REGION (Jan - Dec 2025)

DEP	ARR
Awdal	
Bakool	
Banadir	1,508
Bari	
Bay	108
Galgaduud	408
Gedo	
Hiraan	56
Lower Juba	5,889
Lower Shabelle	263
Middle Juba	7
Middle Shabelle	1,394
Mudug	143
Nugaal	
Sanaag	
Sool	
Togdheer	
Woq. Galbeed	

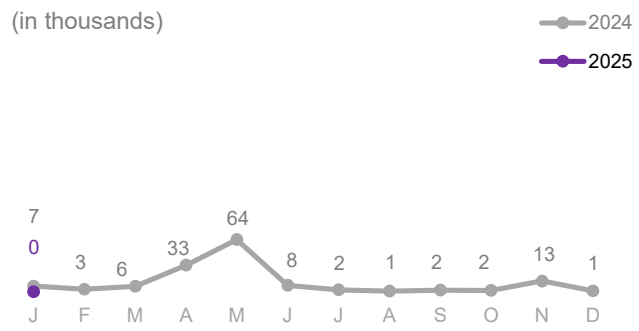
BY DISTRICT (Jan - Dec 2025)



FLOOD DISPLACEMENTS

0 in Jan
0 (Jan - Dec 2025)
142,100 (Jan - Dec 2024)

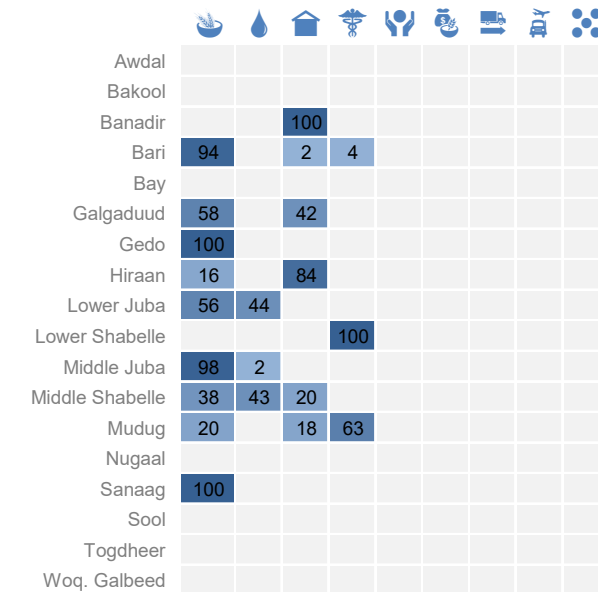
There were no significant arrival or departure displacements owing to floods for the month of January 2025.



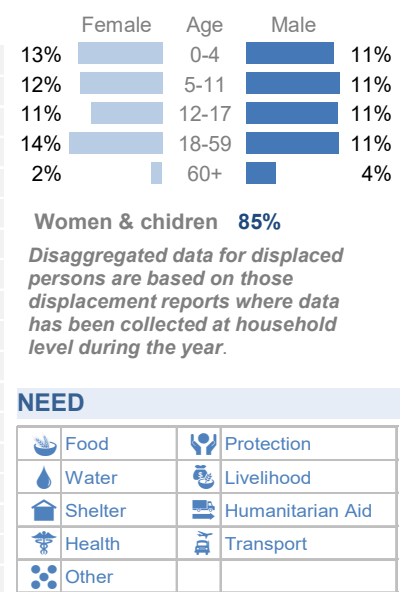
BY REGION (Jan - Dec 2025)

DEP	ARR
Awdal	
Bakool	
Banadir	10
Bari	
Bay	
Galgaduud	
Gedo	
Hiraan	
Lower Juba	
Lower Shabelle	
Middle Juba	
Middle Shabelle	
Mudug	
Nugaal	
Sanaag	
Sool	
Togdheer	
Woq. Galbeed	

PRIORITY NEED ON ARRIVAL (Jan in %)



AGE & GENDER (2025)



About PRMN

The PSMN (Protection & Solutions Monitoring Network) is a UNHCR-led project which identifies and reports on displacements (including returns) of populations in Somalia. The network also identifies and reports on protection risks and incidents underlying such movements. Only figures collected by PSMN are reported above. Not all displacements in Somalia are captured. This dashboard should be read in conjunction with the Notes on PSMN Methodology (<https://data2.unhcr.org/en/documents/details/53888>) which outline the approach and certain limitations. The figures shown are for numbers of individuals and are based on interviews with key informants and/or displaced households at destination (unless otherwise noted). Further information and datasets available on request use contact below.

Partner



UNHCR is grateful for the generous contributions of donors who have directly contributed to the UNHCR Somalia operation in 2025

