



# CHAD: FORCIBLY DISPLACED PERSONS

July 2025

## KEY FIGURES ON FORCIBLY DISPLACED PERSONS

**2, 078, 798**

Total

**1, 440, 860**

Refugees

**9, 034**

Asylum seekers

**225, 689**

Internally displaced persons (Lake)

**403, 215\***

Returned migrants

### Others keys figures

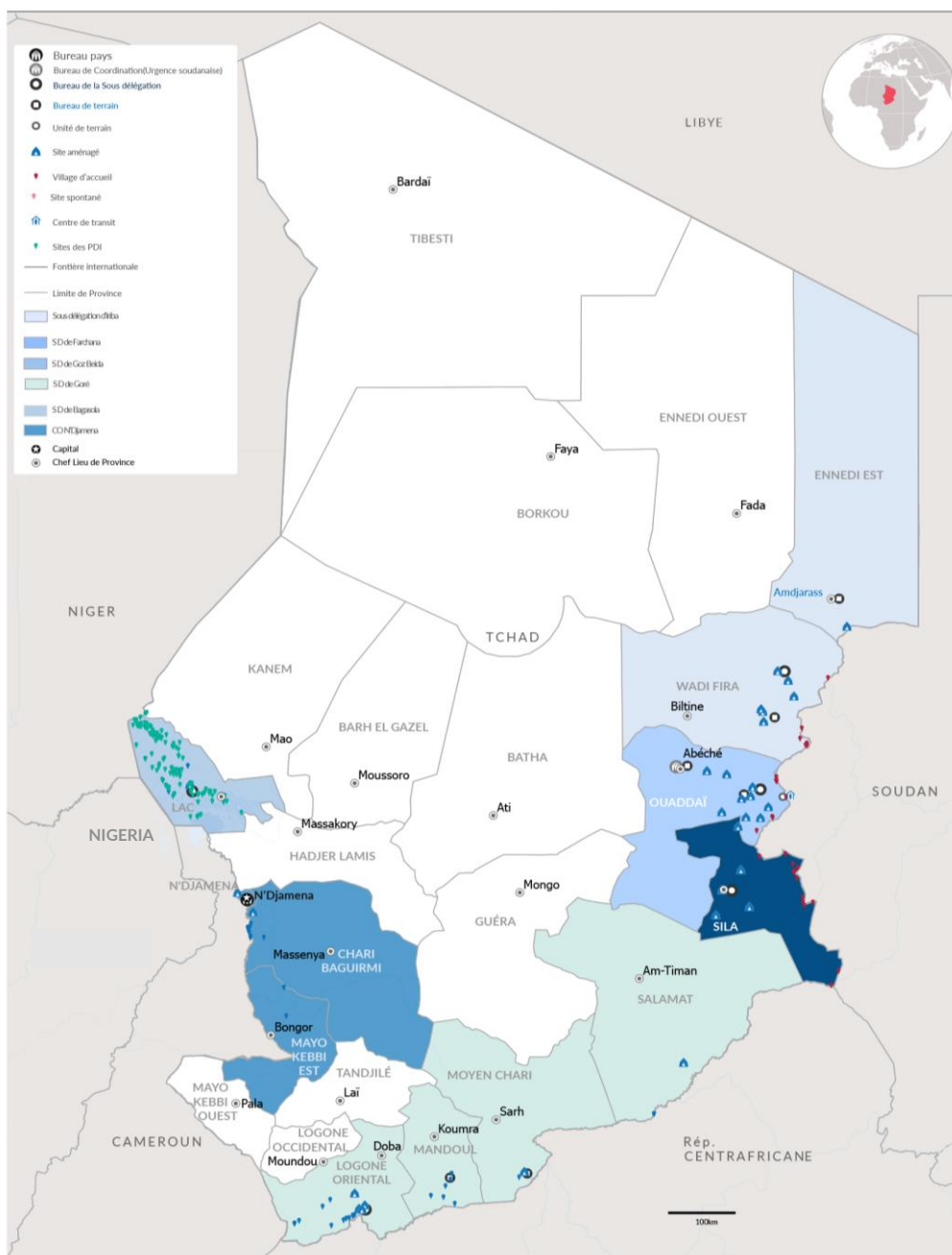
**17, 789**

Cameroonian refugees assisted for voluntary repatriation

**874, 605**

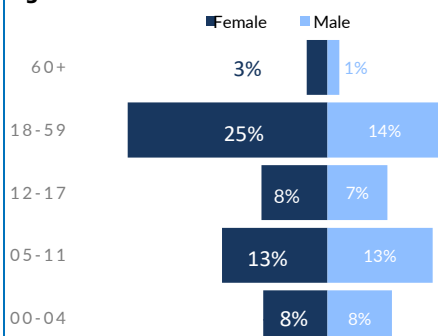
New arrivals from Sudan since April 2023

\* Returned migrants at risk of statelessness from: Niger, CAR, and Sudan.

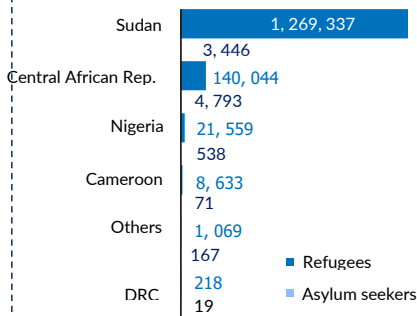


## REFUGEES AND ASYLUM SEEKERS

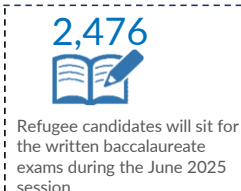
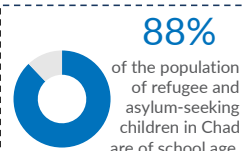
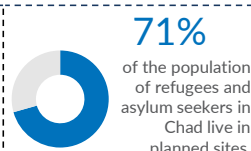
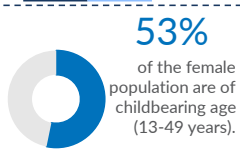
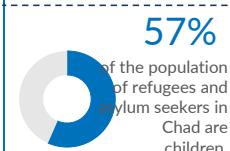
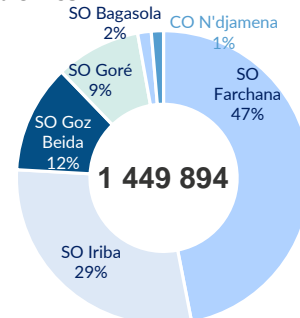
### Age Cohort



### By Country of Origin



### By Sub Office





# CHAD: REFUGEES AND ASYLUM SEEKERS

July 2025

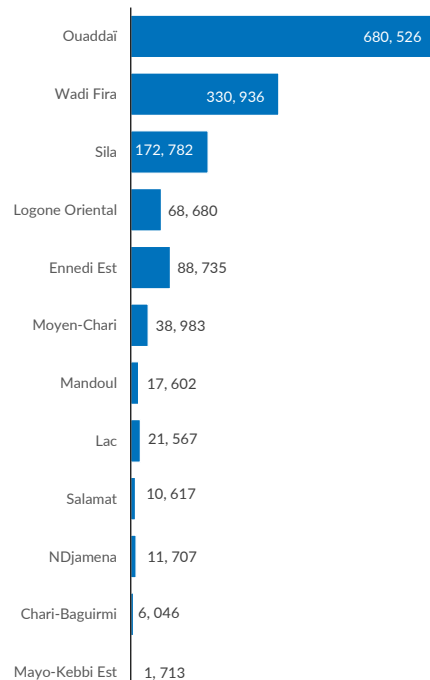


1, 449, 894  
INDIVIDUALS



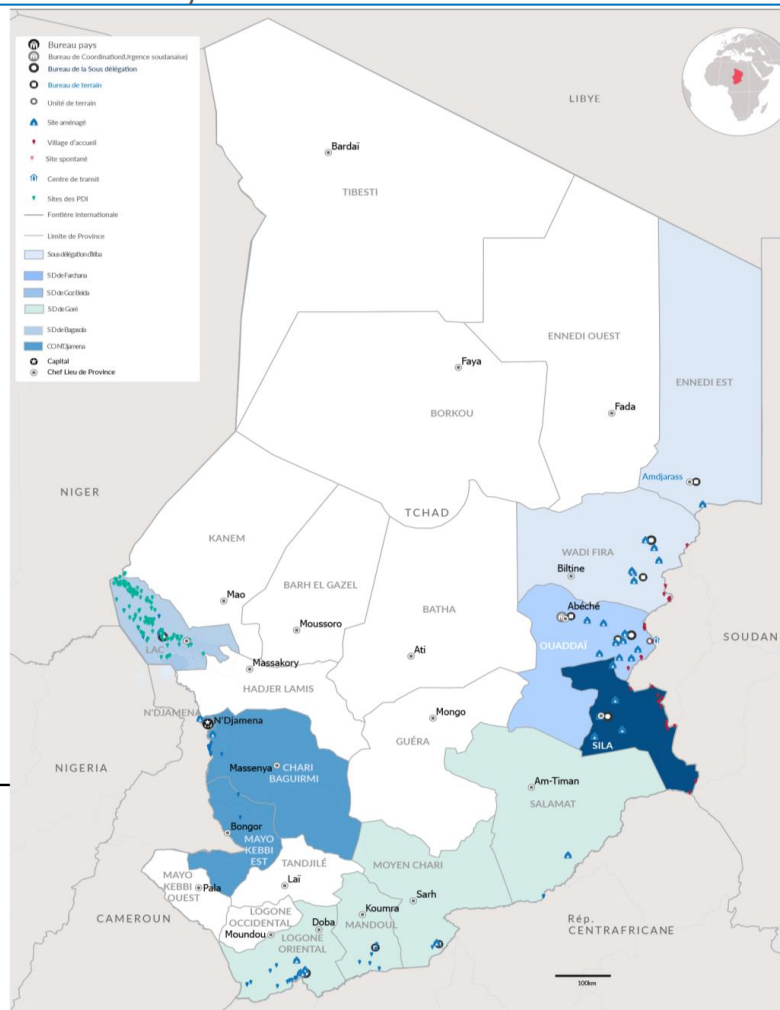
359, 060  
HOUSEHOLDS

## By Province



SO Bagasola	
21, 567	
Dar es Salam*	18, 418
Bol	1, 600
NGouboua	513
Kiskawa	438
Liwa	340
Tchoukoutalia	196
Kiskra	0
Autres	62

BO N'Djamena	
19, 466	
N'Djaména	11, 707
Mayo-Kebbi Est	1, 713
Chari-Baguirmi	6, 046



## Abeche Coordination Office

1, 272, 979

SO Iriba	
419, 671	
Touloum*	56, 610
Am Nabak*	33, 840
Iridimi*	85, 474
Border	13, 275
FO Amdjarass	
88, 735	
Oure Cassoni*	88, 735
FO Guéréda	
141, 737	
Mile*	61, 943
Kounoungou*	28, 847
Koursigue*	13, 106
Border(Dar Tama)	37, 841
SO Farchana	
680, 526	
Farchana*	55, 006
Aboutengué*	46, 686
Metche*	42, 016
Gaga*	39, 177
Adre	237, 034
Border(Ouaddaï)	26, 934
FO Abeche	
30, 808	
Kouchaguine- M.*	21, 314
Abéché	9, 494
FO Hadjer Hadid	
202, 865	
Bredjing*	55, 953
Alacha*	47, 523
Treguine*	30, 648
Arkoum*	50, 131
Dougui*	18, 610
SO Goz Beida	
172, 782	
Goz Amir*	44, 642
Zabout*	51, 954
Djabal*	37, 593
Kerfi	11, 389
Border(Sila)	27, 204

## Principales nationalités(Ref. & ASY)

1, 272, 783

### SUDANESE

Essentially located in the 21 planned sites and 1 reception village in the East and in urban areas.

144, 837

### CENTRAL AFRICANS

Located in the six camps, sites, and host villages in the South and in urban areas.

22, 097

### NIGERIANS

Primarily located in the Dar Es Salam camp and host villages in the Lake Province as well as in urban areas.

8, 704

### CAMEROONIANS

Mainly composed of populations who fled intercommunal clashes in the Logone and Chari department in Cameroon. They are located in the two camps around N'Djamena and on the banks of the Logone River.

1, 473

### OTHER NATIONALITIES

Outside the major nationalities, there are individuals of various origins: Algeria, Benin, Burkina Faso, Burundi, Côte d'Ivoire, Republic of the Congo, Egypt, Eritrea, Ethiopia, Gabon, Libya, Mali, Islamic Republic of Iran, Rwanda, Senegal, Somalia, South Sudan, Palestine, Yemen.

## KEY FIGURES ON THE SUDANESE CRISIS

874, 605 409, 819

New arrivals from Sudan 2023.

Sudanese refugees in Chad before the 2023 crisis.

\* Planned site