

Sudanese return from neighbouring countries

as of 15 Apr 2026

4.4 M
Sudanese refugees in neighbouring countries

954 K
Sudanese return from abroad since 2024

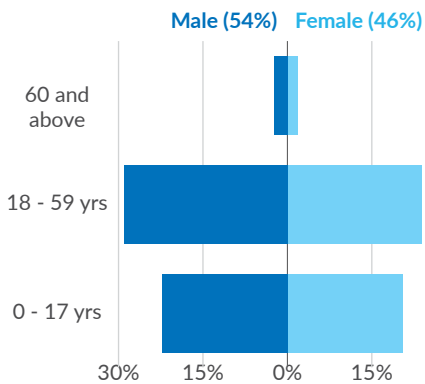
Country	Cross border movement	Primary asylum Country	Returnees	Pendular movements	Onward movements
Egypt*	590K	513K	98%	1.3%	0.6%
South Sudan*	215K	215K	84%	7%	9%
Chad*	82K	82K	60%	25%	15%
GCC*	57K	57K	Unknown		
Uganda*	6.6K	6.6K	Unknown		
Libya*	2.5K	79.5K	Unknown		
Ethiopia*	1K	1K	56%	30%	14%

Returnees: Estimated number of people who are not planning to move onwards to another country.

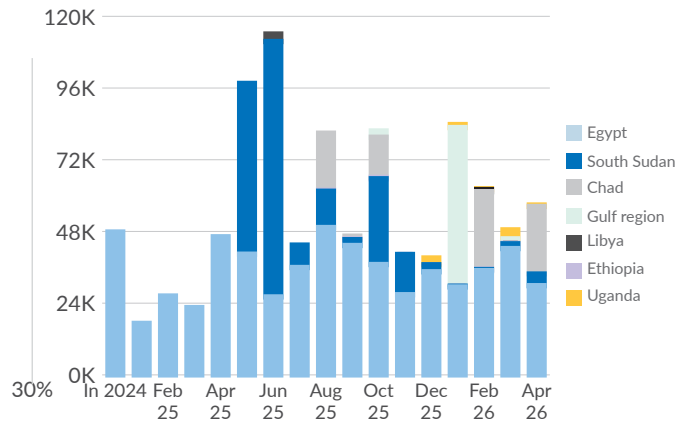
Pendular movements: Estimated number of people who are planning to return to the country they arrived from.

Onward movements: Estimated number of people who are planning to move to another country (other than the one they arrived from).

Age and gender

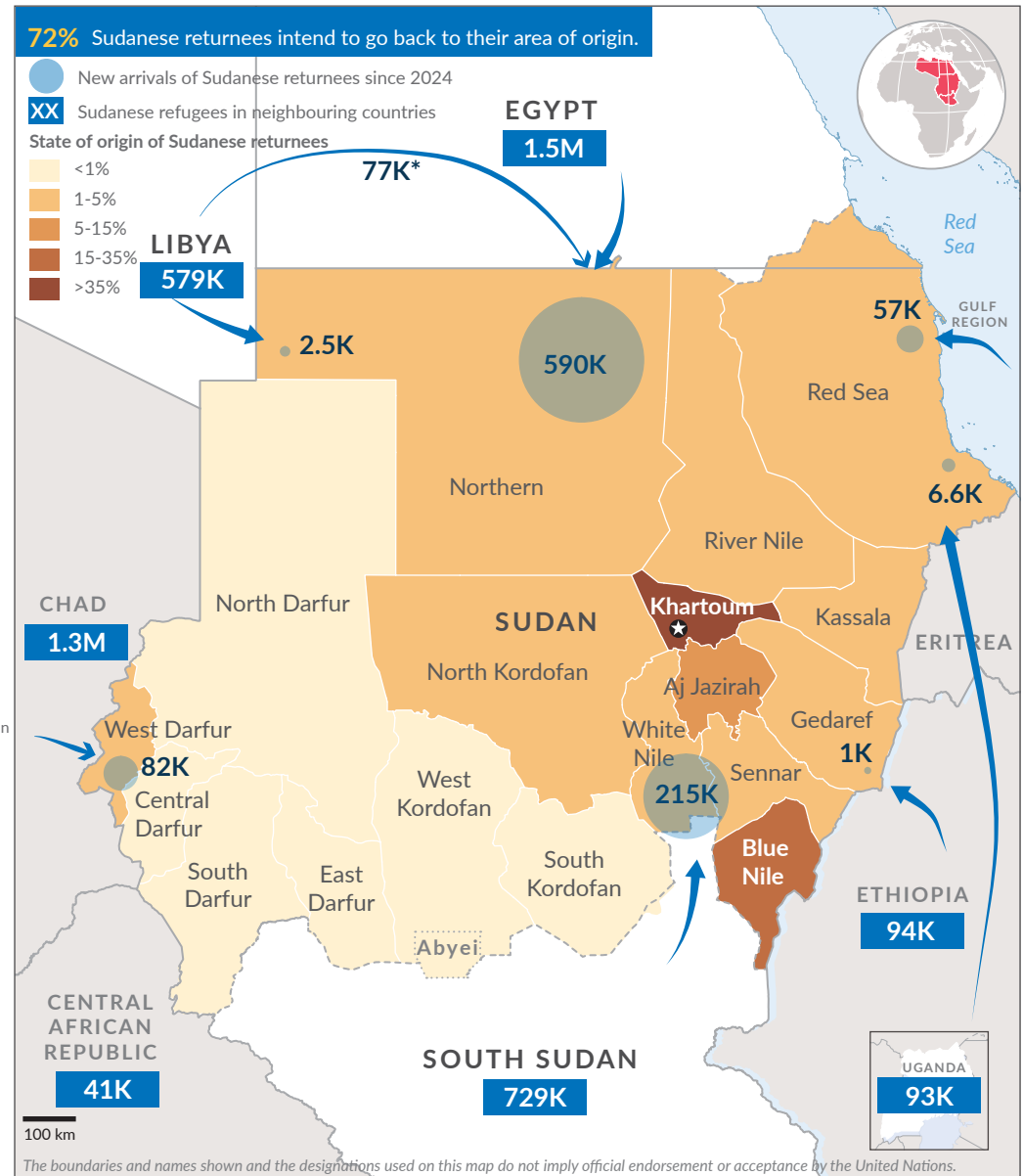


Return trend



* Data source

- Egypt: Border Authorities, UNHCR Border Monitoring, IOM DTM Return overview and cross-border monitoring reports.
- South Sudan: COR (Commissioner for Refugees), UNHCR Border Monitoring, IOM DTM Return overview and cross-border monitoring reports.
- Chad: IOM DTM Return overview and cross-border monitoring reports.
- Gulf Cooperation Council (GCC): IOM DTM Return overview and cross-border monitoring reports.
- Libya: UNHCR, IOM DTM Return overview and cross-border monitoring reports.
- Ethiopia: IOM DTM Return overview and cross-border monitoring reports.
- Uganda: UNHCR Red Sea Return movement tracking, IOM DTM Return overview.



Findings are based on sample border monitoring in Sudan which has been in place since July 2024. This monitoring does not identify registration status, refugee status, or other movement categories and therefore results should be read as indicative of the concerns raised by people returning to Sudan.

51%
had applied for asylum in departing countries

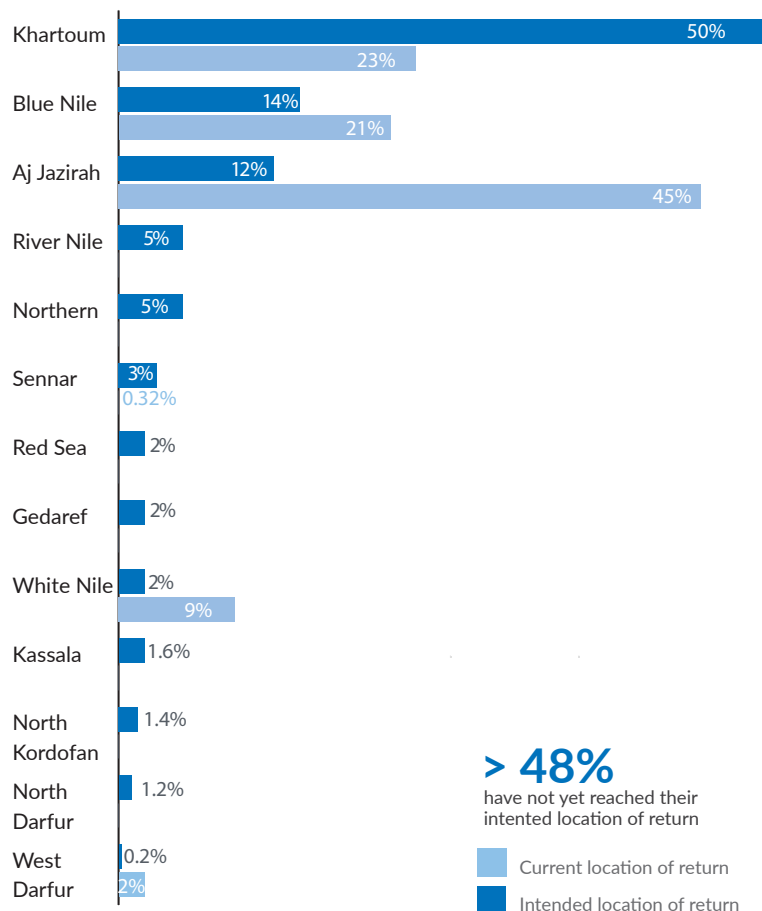
65%
reported protection risks in departing countries

63%
reported long processing times at the border

20%
reported family members were left behind

50%
participated in economic activities prior to displacement

Intended state of return vs current location



> 48%
have not yet reached their intended location of return

■ Current location of return
■ Intended location of return

Assistance and protection priorities by intended state of return

n= 3,906

	Khartoum	Blue Nile	Aj Jazirah	Northern	River Nile	Sennar	Red Sea	Gedaref	White Nile	Other State
Priority assistance needs	2,070	463	462	191	168	108	84	74	69	217
Financial	92%	58%	92%	78%	88%	95%	82%	85%	91%	95%
Food	61%	85%	68%	76%	65%	64%	64%	83%	66%	69%
Health	47%	66%	51%	45%	55%	55%	43%	48%	40%	56%
Water	40%	60%	47%	35%	45%	50%	43%	50%	46%	57%
Sanitation	29%	46%	31%	18%	36%	32%	25%	38%	37%	41%
NFI	28%	47%	28%	14%	17%	34%	21%	28%	26%	30%
Shelter	24%	58%	29%	23%	25%	25%	14%	20%	20%	36%
MHPSS	22%	16%	24%	15%	32%	32%	25%	28%	29%	36%
Connectivity	18%	5%	21%	12%	15%	23%	14%	23%	17%	17%
Protection priorities										
Girls and women	26%	34%	26%	13%	26%	34%	18%	23%	20%	31%
Children	15%	35%	17%	8%	20%	16%	7%	15%	23%	17%
Elderly	13%	17%	16%	11%	20%	14%	7%	20%	11%	15%
Family reunification	14%	16%	17%	7%	6%	11%	11%	10%	20%	30%
Documentation	6%	42%	8%	6%	5%	14%	0%	10%	9%	10%
Legal assistance	9%	17%	8%	13%	13%	11%	11%	25%	14%	16%
Persons with disabilities	8%	18%	10%	7%	13%	13%	4%	13%	6%	13%
Access to asylum	13%	11%	10%	5%	8%	16%	11%	8%	14%	13%
Information	4%	11%	7%	4%	1%	11%	0%	5%	6%	7%