

The 2025 End of Year Inter-Sector Dashboard is a compilation of the cumulative and sector-specific results achieved by partners under the Lebanon Response Plan (LRP) in 2025. The Dashboard includes key achievements, an overview of populations reached as well as funds available per sector.

Below are the links to the Sector LRP 2025 End of Year Dashboards. These include detailed information on the results achieved by partners under each sector, as well as the challenges faced throughout 2025.

Links to the 2025 End of Year Sector Dashboards



Total Population Reached in 2025

 **2,386,971** individuals reached

821,276

Vulnerable Lebanese
(Food Security and
Agriculture Sector)

1,129,347

Displaced Syrians
(Basic Assistance Sector)

99,005

Palestine Refugees in
Lebanon (PRL)
(Social Stability Sector)


22,490


Palestinian Refugees
from Syria (PRS)
(Basic Assistance Sector)


16,204


Migrants
(Protection Sector)


Key Results Achieved in 2025

 Nearly 2,088,322 million vulnerable Lebanese, displaced Syrians and Palestinian refugees were reached with assistance and support through interventions under the Lebanon Response Plan (LRP) in 2025, including 821,276 Lebanese, 1,129,347 displaced Syrians, 99,005 Palestine Refugees in Lebanon (PRL) and 22,490 Palestinian Refugees from Syria (PRS), and 16,204 Migrants.

 Over \$303.5 million was injected into Lebanon's economy through cash-based interventions supporting vulnerable families. This accounts for approximately 19 per cent of the Lebanon Response Plan (LRP) total available funding of \$1.63 billion.

 In response to multiple crises and rising food needs, a total of 2,400,132 individuals received food assistance through a combination of in-kind cash-based modalities (52% women and 48% men). In-kind assistance, primarily through food parcels, reached 757,668 people (including 158,697 displaced Syrians, 578,949 Lebanese, 18,665 PRS/PRL, and 1,357 migrants/others). Cash-based assistance was provided to 1,642,464 individuals through various programmes (including e-cards, SRSN, ATM withdrawals, and food vouchers), with a total transfer value of \$146.4 million. Assistance was delivered through a rotational approach, with periodic eligibility reviews to ensure prioritization of the most vulnerable households. While the monthly caseload remained below planned levels, the cumulative number of unique individuals reached 99 per cent of the annual target. In addition, 19,576 vulnerable small-scale farmers (47% women & 53% men) benefited from agricultural livelihoods support, including in-kind inputs, cash-based assistance, capacity-building, and cash-for-work opportunities. In parallel, 242 agricultural cooperatives, agricultural MSMEs, and informal associations were supported as entities through similar modalities. Furthermore, the sector also strengthened the capacities of 214 public-sector and technical staff.

 Throughout 2025, 243,908 economically vulnerable households improved their ability to meet basic survival needs through regular, unconditional, and unrestricted cash grants. The highest coverage of monthly multi-purpose cash assistance for basic non-food needs in 2025 was provided to 182,601 Syrian households, 32,496 vulnerable Lebanese households, 8,836 Palestine refugee families from Syria and 18,249 Palestinian refugee families in Lebanon. Among displaced Syrians, 84% per cent of households deemed to be socio-economically vulnerable in 2025 were assisted with regular cash for basic needs. This coverage is slightly higher than in 2024, where around 81 per cent of socio-economically vulnerable households received assistance. Additionally, 40,813 individuals with specific vulnerabilities received social grants through the National Disability Allowance and other focused programmes. The value of regular cash assistance provided in 2025 under the Basic Assistance sector totaled US \$ 86.40 million across all population cohorts. Additionally, the value of seasonal cash assistance amounted to \$15.20 million, providing support to 67,700 households. In parallel, 166,462 unique households were assisted with in-kind non-food item (NFI) support through seasonal and emergency distributions, including 92,200 Syrian households, 67,158 Lebanese households, 723 Palestinian refugee households from Lebanon, 13 Palestinian refugee households from Syria, 6,319 migrant households, and 49 households of other nationalities.

 Through the Ministry of Public Health's network of Primary Healthcare Centers, over 2,237,839 consultations were provided. Of these, 62 per cent were Lebanese, and 38 per cent were displaced Syrians and refugees from other nationalities (PRLs & PRSs). The consultations addressed specialized mental health needs (96,156 consultations), non-communicable diseases (394,410 consultations) and antenatal care (142,291 consultations). In addition, around 238,936 individuals were able to access medication for chronic diseases. 87 per cent of the recipients

were Lebanese, and 13 per cent were displaced Syrians and refugees from other nationalities (PRLs & PRSs). Notably, women and girls constituted the majority in various consultation and medication recipient categories. A total of 69,311 individuals received financial support for improved access to hospital care and to advanced/specialized diagnostic services, constituting 66 per cent of the yearly target. Among these recipients, 18 per cent were vulnerable Lebanese individuals. The disparity between the assistance provided and the target population primarily stems from insufficient resources to address the significant hospitalization requirements, particularly within the Lebanese population. 62 per cent of individuals benefiting from subsidized hospitalization were women and girls, while 38 per cent were men and boys. The number of vulnerable people benefiting from mental health consultations decreased by 36 % compared to 2024. Of the 96,156 beneficiaries, 60 per cent were Lebanese and 40 per cent were displaced Syrians. Mental health consultations are of critical importance to address the psychological well-being and resilience of vulnerable individuals who are most affected by the continuous crises and their resulting challenging circumstances.



Over 32,887 caregivers (90% female, 10% male) of children under the age of five, were reached with messages on breastfeeding, Infant and Young Child Feeding (IYCF), responsive care and feeding, healthy diets, and maternal nutrition. To address the micronutrient deficiencies among children, 64,056 children (48% female, 52% male) under the age of five were provided with multiple micronutrient supplements powders for point-of-use food fortification, while over 137,773 (51% female, 49% male) received vitamin A supplementation. Over 387,997 children under 5 were screened for wasting in primary health care centers (PHCC) and within outreach activities where 1,560 children were admitted for treatment to receive life saving essential nutrition services. The sector reached 303,318 caregivers of children under five with early childhood development (ECD) awareness and key messages. In addition, 23,110 PBW and women of reproductive age have been provided with adequate multiple micronutrients or iron folic acid supplements to prevent micronutrient deficiencies. 84,393 pregnant and breastfeeding women were screened for wasting (acute malnutrition) at PHCC and community-levels of which 2,714 women were admitted to the malnutrition program to receive treatment.



Through support from sector partners to 5 water pumping stations and other infrastructure projects, 174568 individuals (82% Lebanese) living in permanent residences were provided access to an adequate quantity of safe water in their dwellings (a decrease from 307,602 beneficiaries in 2024). Moreover, through more than 700 repairs to water systems, over 4.5 million individuals are estimated to have benefited from around 468,400 cubic meters of water per day. Over 174,500 primarily Lebanese individuals were provided access to adequate sanitation through the rehabilitation of 16 wastewater treatment plants and lifting stations. In temporary residences (Collective shelters and informal settlements) 177,559 beneficiaries (131,675 displaced Syrians and 45,884 internally Displaced Lebanese) received support through water trucking (a decrease from 370,022 from 2024 considering post ceasefire). Sanitation was supported through the provision of safely managed wastewater services. Over 221,000 individuals in temporary residences received desludging services, toilet rehabilitation, and maintenance of sanitation facilities – an insufficient number due to resource constraints, given the ongoing high level of need. The collected sludge was safely disposed of in wastewater treatment plants which contributed to environmental safeguarding. More than 397,000 Lebanese and 221,000 displaced Syrians were supported with Hygiene promotion through the distribution of 418000 Family Hygiene-related kits.



Under the Education sector, a total of 912 public schools received support through school funds. This enabled the provision of education to 213,739 Lebanese and 109,644 non-Lebanese students, with half of these students being girls. Additionally, 10,316 special contract teachers and counselors at primary and secondary levels were supported with salaries. In the realm of non-formal education, 74,056 children (51 % of whom were girls) received support, slightly less than the previous year. Remedial and homework support programs benefitted nearly 64,665 children, 53 per cent of whom were girls. The Call & Learn Tutoring Hotline further supported these efforts by providing low-tech, individualized learning assistance through 303,673 calls reaching over 100,000 children enrolled in formal education, of which 55 per cent were girls and 34 per cent were non-Lebanese. To alleviate additional barriers to education, nutritious snacks were provided to 186,533 children, and 2,500 children benefitted from cash-for-education programs, particularly focusing on those affected by conflict in the south and attendees of MEHE-hub schools. During hostilities, partners implemented Education in Emergency (EiE) activities and supported Internally Displaced Persons (IDP) children in shelters, benefiting 73,000 children with educational activities and recreational kits, including psychosocial support programs for approximately 27,000 children. Additionally, MEHE's emergency response initiated a remote learning campaign by providing teachers to connect their students via Microsoft Teams and using Madristi online learning platform. As of 8 March, 99,794 students are actively using the online learning platforms, representing a 33.7 per cent engagement rate for all students and 63 per cent for students reported as following online education. Teacher participation has also significantly increased, with 17,236 teachers engaged (59%).



Around 1,307,394 individuals benefited from a variety of protection interventions in 2025 (473,910 vulnerable Lebanese and 833,484 non-Lebanese, including 742,234 Syrians, 16,204 migrants, 62,677 PRL and 12,369 PRS) including 155,445 received information about their rights and services and 399,104 benefited from community-based protection, empowerment, and prevention programs. In response to the increasing need for legal counseling, 103,749 households benefited from counseling and support regarding civil registration including birth registration, marriage, divorce and death. In addition, 93,450 persons were sensitized on legal topics and legal services and 63,358 children and adults were reached through awareness raising sessions and activities on PSEA. In 2025, Communication with Communities continued to be a priority activity to ensure inclusive access to information and enhanced access to services. Online platforms such as one-way or two-way communication tools were accessed over 5 million times.



Among the beneficiaries reached with child protection programs, a total of 96,290 children (50,916 girls & 45,374 boys) received community-based services, 77,775 reached by social and behavioral change initiatives and 41,946 girls, boys, and caregivers (13,242 girls, 11,929 boys and 16,775 caregivers) received Focused Psychosocial support (F-PSS).



GBV service providers provided services including case management, psychosocial support and tailored legal services and recreational activities for GBV survivors for 481,627 individuals taking place in safe spaces. 75,773 women, girls, men and boys also participated in gender equality and empowerment programs fostering prevention of GBV. Among the beneficiaries of protection programs are 3,052 persons (36 % Lebanese) living with physical or intellectual disability (mostly motoric disabilities and visual impairments) who received specialized assistance by specialized organizations. As part of the inter-agency referral analysis, the Protection sector continued to receive the highest number of referrals nationally,

with 253,803 cases (34 % of all referrals). 17,385 persons received cash to address their protection, including GBV needs. 2,826 refugees were submitted for resettlement, and 842 migrants were supported to safely return to their country of origin.



In 2025, assistance was provided to a total of 44,891 micro and small businesses through access to financial resources, cash, and in-kind grants, compared to 30,533 in 2024. This support contributed to protecting and sustaining these businesses (MSMEs) and the employment opportunities they generate. The reported financial aid extended to such businesses amounted to US \$ 24.0 million.



17,593 individuals (53% Lebanese, 45% displaced Syrians, and 2% Palestine Refugees) were able to access temporary employment opportunities created under labor-intensive programs (Cash For Work programs), designed not only to provide rapid economic support to the most vulnerable but also to contribute to rehabilitation of municipal services, environmental and productive infrastructure. With a reported investment of \$4.6 million, 357 villages across the country benefited from the various improvements in communal and productive infrastructure. The assistance provided employment opportunities in return of cash, while creating agricultural assets benefiting small-scale farmers and farming communities. In addition, 36,143 individuals completed market-based skills training and 4,793 benefited from work-based learning , representing increases of 618 per cent and 113 per cent respectively compared to 2024 , while 25,582 received career guidance and entrepreneurship support, with women representing the majority across all three modalities.



187,427 individuals (129,296 displaced Syrians, 57,516 Lebanese, 482 PRL, 40 Migrants and 93 PRS) were supported with a variety of shelter interventions to improve their access to adequate shelters or to maintain their dwellings at livable and safe conditions. Key interventions included weatherproofing assistance for 124,586 individuals in informal settlements, enabling families to protect their shelters ahead of winter or to reinforce partially damaged ones after emergencies such as fires, floods, or evictions. The sector also supported 36,897 individuals through fire prevention measures, including the distribution of fire safety kits and fire risk awareness training. Site improvements benefitted 13,775 displaced Syrians in informal settlements, mitigating water inundation risks. Additionally, 6,440 individuals in non-residential buildings received

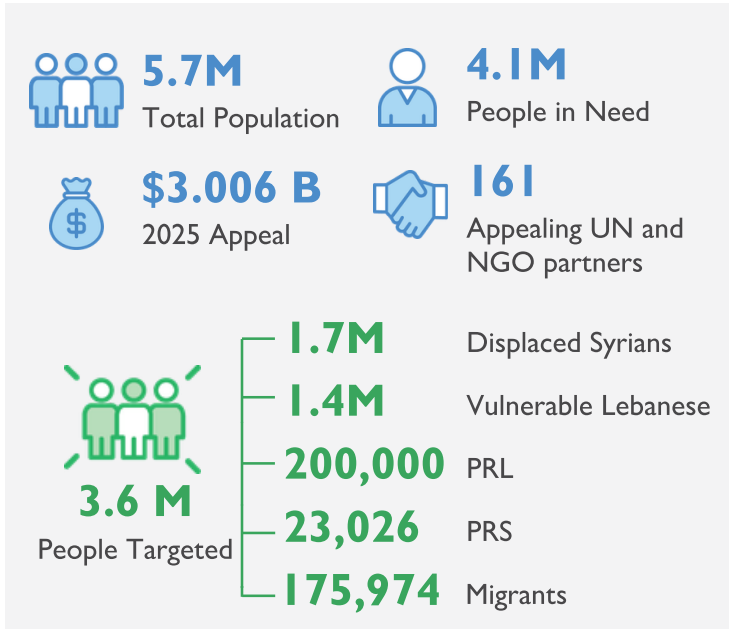
minor repair assistance, and 5,897 individuals benefited from residential shelter upgrades to minimum humanitarian standards with enhanced security of tenure. Cash for Rent assistance was provided to 12,102 individuals to mitigate eviction. Residential shelters in disadvantaged areas were upgraded for 2,139 individuals, and common areas in buildings housing 1,165 individuals were rehabilitated. Following the emergency response to hostilities, the Shelter sector provided Cash for Shelter assistance to 31,260 individuals displaced internally. Furthermore, 13,762 internally displaced Lebanese were supported with weatherproofing interventions to facilitate their return to their lightly damaged homes. Lastly, within residential and non-residential shelters, 1,077 post-December 2024 Syrian arrivals received assistance to improve shelter conditions. While these dwellings did not present structural safety concerns, the interventions focused on sealing openings and restoring basic habitability standards. Additionally, 99 collective sites (CSs) with 1,392 housing units were repaired and maintained, enabling them to accommodate approximately 6,960 post-December 2024 Syrian arrivals, with the majority of the CSs located in the Bekaa, Baalback Hermel and Akkar.



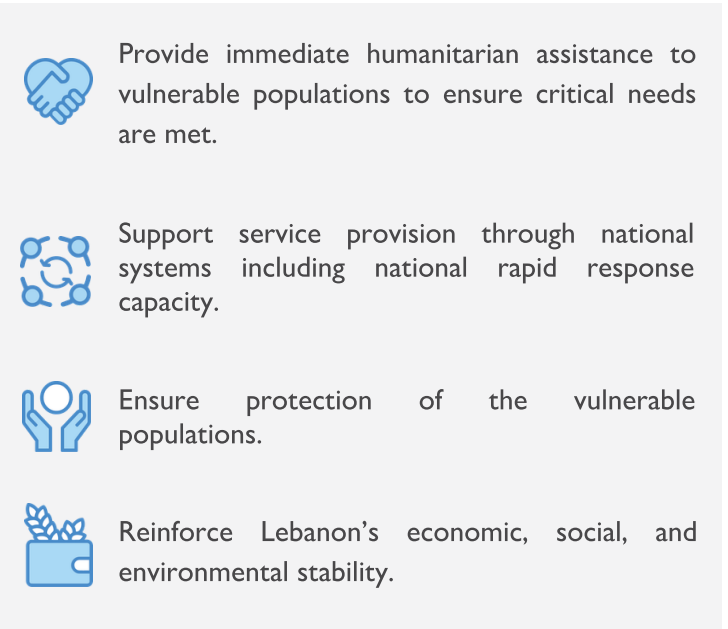
To support municipalities in delivering basic services to their residents and release the pressure arising from limited municipal capacities, Social Stability sector partners implemented 138 municipal or cluster level basic services and solid waste management projects, supporting 59 municipalities with basic services projects and 106 municipalities and public institutions with solid waste management projects in Lebanon in 2025. The latter helped in the collection, sorting and treatment or transportation of 18.2 tons of municipal solid waste. 34,771 female and male youths across nationalities participated in 1,045 youth empowerment initiatives. An additional 8,522 individuals participated in 501 community events (festivals, sports competitions) organized by "Conflict Prevention Mechanisms" - established mechanisms by sector partners aiming to reduce tensions at the local level and through municipalities. Furthermore, 1,441 partners staff (1,143 female & 301 male) received training on conflict sensitivity to enhance its mainstreaming in their operations. The training, which also included Training of Trainers in Arabic, allows staff to integrate conflict sensitivity in their different programming phases and activities, to maximize positive impacts, and mitigate any negative impacts of interventions under the LRP.

LRP 2025 Planning Figures and Strategic Objectives

Planning Figures



Strategic Objectives



LRP 2025 Funding Received and Allocated (including Flash Appeal)

