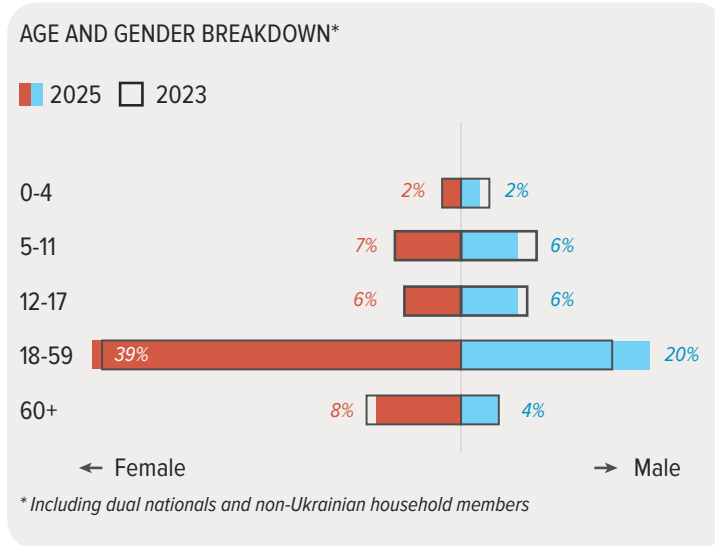
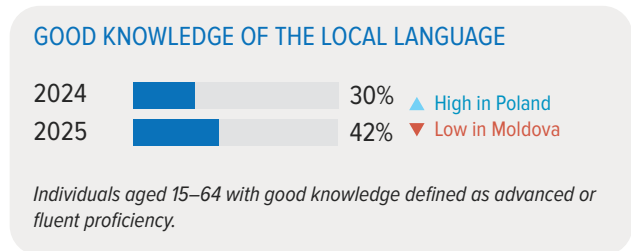
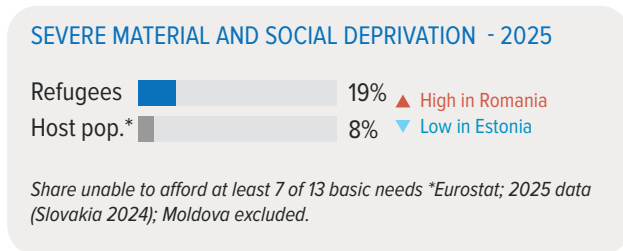
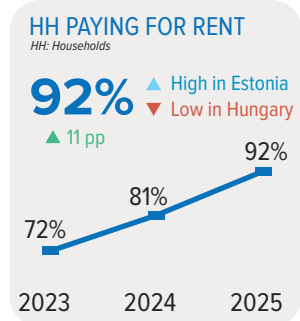
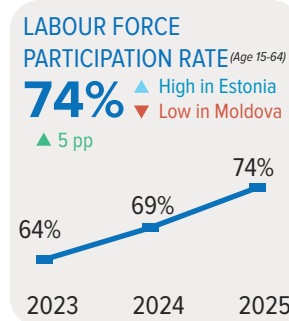
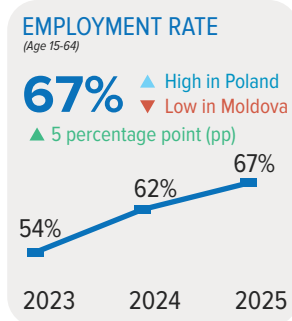


ABOUT THE SEIS The Socio-Economic Insights Survey (SEIS) is a joint annual household survey of refugees from Ukraine, conducted since 2023 in countries covered by the Ukraine Refugee Response Plan (RRP). The 2025 round surveyed **4,260 households and 9,667 individuals** across nine countries — Bulgaria, Estonia, Hungary, Latvia, Lithuania, Moldova, Poland, Romania, and Slovakia — between May and November 2025, mostly through face-to-face interviews. Czechia, which participated in 2023 and 2024, did not take part in 2025 and is therefore excluded from this analysis. Sampling was non-probabilistic, so findings are indicative rather than statistically representative. All key figures in this factsheet are based on 2025 data, unless otherwise specified.

DEMOGRAPHICS



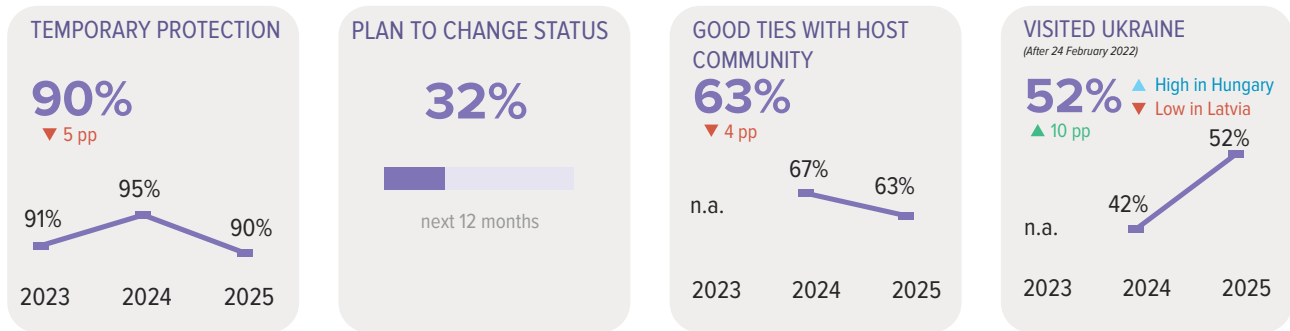
SOCIO-ECONOMIC INCLUSION — HIGHEST AND LOWEST COUNTRIES IN 2025



- Refugee employment and labor force participation are approaching host-population levels, yet refugees earn less per hour and many work outside their pre-war sectors — pointing to underemployment and skills mismatch.
- Knowledge of the local language continues to improve, yet remains the top barrier to employment, highlighting the need for sustained language training to help address underemployment.
- Severe socio-material deprivation among refugee households remains more than double the rate of host populations, underscoring the link between employment quality, wages, and broader material wellbeing.

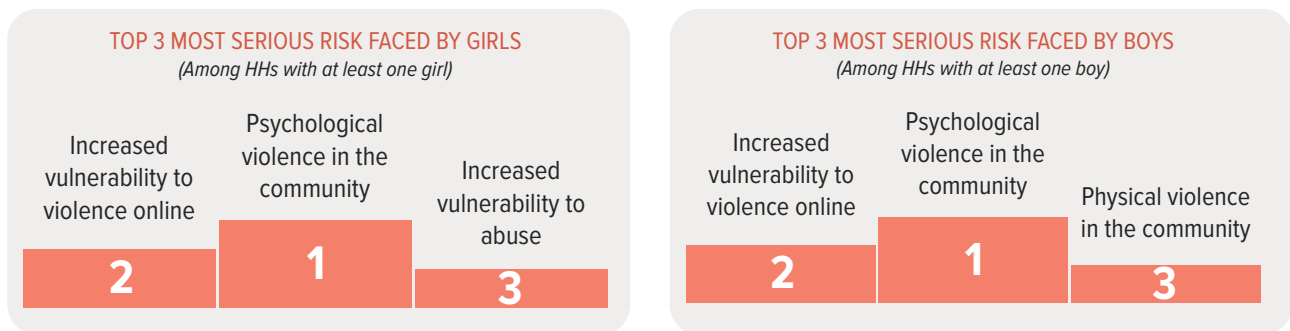
Employment rate: employed as % of working-age population (15-64). **Unemployment rate:** unemployed as % of the labour force. **Labour force participation rate:** labour force (employed + unemployed) as % of working-age population (15-64).

PROTECTION



- Temporary protection remains the predominant legal status, albeit with a slight decline, driven by transition to other legal statuses (such as work or study-based permits). One in three refugees intend to change their legal status within the next 12 months, the majority seeking employment-related residence permits.
- Half of households (52 percent) reported visits to Ukraine since their first departure — most commonly to see relatives (59 percent), access healthcare (36 percent), or obtain documentation (18 percent), reflecting both enduring ties and unmet needs in host countries.

CHILD PROTECTION



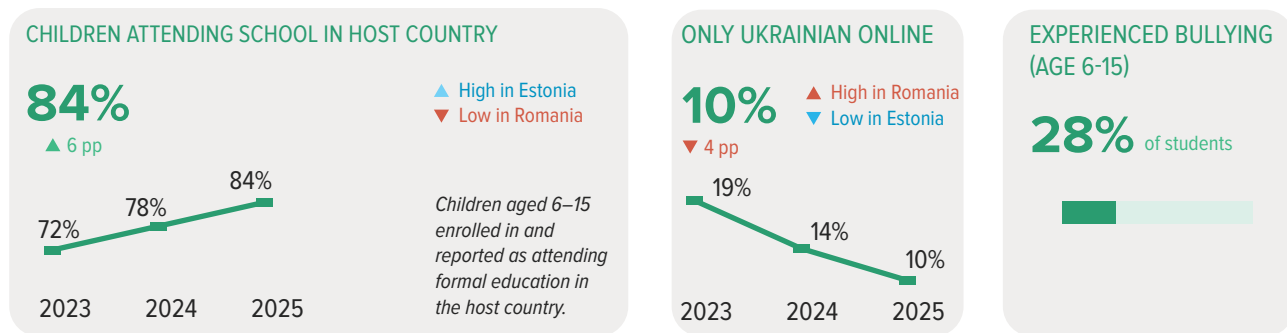
- Concerns about risks for children in the community remain high (53 percent in 2025 versus 52 percent in 2024), with psychological violence in the community and online violence the most commonly reported risks for both girls and boys and notable physical violence - reflecting the need for inclusive prevention measures and child protection systems.

GENDER BASED VIOLENCE (GBV)



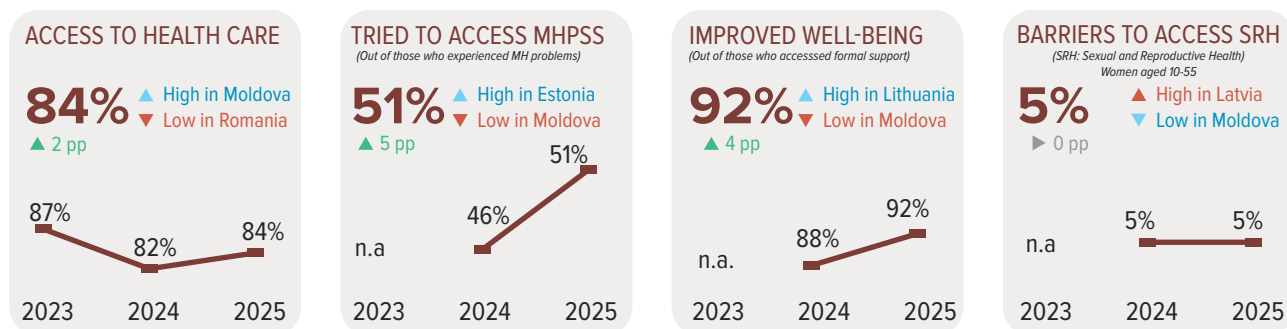
- Awareness of specialized services for survivors of violence remains critically low, evidenced by the fact that one in five respondents is completely unaware of the availability of any GBV-related services. While approximately one-third of individuals lack knowledge regarding immediate care—specifically health (31%) and safety services (33%), more than half of the respondents remain unaware of vital specialized response mechanisms, including legal assistance (54%), psychosocial (56%), and helpline support (64%).

EDUCATION



- A majority of school-aged children from Ukraine are reported enrolled in host-country education systems, with enrollment continuing to rise since the start of the full-scale war.
- A sizeable share of children remain in online-only or dual-enrollment arrangements that may affect long-term wellbeing and integration.
- Bullying is reported by one in four students and is markedly more common among children with disabilities, underscoring the need for more inclusive learning environments.

HEALTH AND MENTAL HEALTH AND PSYCHOSOCIAL SUPPORT (MHPSS)



- Most individuals who needed care were able to access it, but gaps persist around waiting times, appointment availability, affordability, and language — disproportionately affecting older refugees, persons with disabilities, and those with chronic illnesses.
- One-third of households reported mental health and psychosocial distress affecting daily functioning, highlighting the continued need for accessible, community-based support and more responsive services for vulnerable groups.
- Across all ages, women face barriers to sexual and reproductive health services — mainly appointment difficulties, long waiting times, and unavailable treatments. Women aged 50 and above are the most affected by barriers to sexual and reproductive health services as they transition beyond their reproductive years.

Data were collected by UNHCR, IOM, UNICEF and partners including the Association Energy, Bulgarian Red Cross, Caritas, CSCM, Estonian Refugee Council, Foundation Zapochvam Otnachalo, Global Metrics, GPB, Lithuanian Red Cross, REACH, TARKI Social Research Institute, USRF Foundation.

Data analysis by: UNHCR, IOM, REACH, UNFPA, UN Women, UNICEF, and ILO.

ANNEX

Data tables

All values are expressed as percentages (rounded). Country columns reflect responses among Ukrainian refugees surveyed in each host country; the Regional column reports the population-weighted regional total. Empty or “n.a.” cells indicate data not available for that year/country.

Due to regional harmonization of age cohorts results may differ from those presented in SEIS country-level reports.

SECTION 01 Demographics

Distribution of individuals by gender and age group

Gender & age group	Bulgaria	Estonia	Hungary	Latvia	Lithuania	Moldova	Poland	Romania	Slovakia	Regional
Female	55%	59%	63%	57%	60%	65%	63%	54%	60%	61%
0–4	2%	2%	3%	2%	2%	2%	2%	4%	2%	2%
5–11	6%	6%	8%	5%	5%	6%	6%	9%	5%	6%
12–17	4%	5%	6%	4%	7%	5%	6%	4%	6%	6%
18–34	14%	14%	18%	11%	11%	13%	14%	12%	10%	14%
35–59	23%	25%	22%	23%	27%	24%	26%	18%	29%	25%
60+	8%	6%	7%	12%	8%	16%	8%	7%	9%	9%
Male	45%	41%	37%	43%	40%	35%	37%	46%	40%	39%
0–4	1%	2%	2%	2%	1%	2%	2%	4%	2%	2%
5–11	6%	7%	6%	8%	6%	7%	7%	8%	7%	7%
12–17	5%	7%	10%	6%	6%	4%	7%	4%	5%	6%
18–34	13%	10%	10%	6%	13%	3%	8%	14%	9%	9%
35–59	15%	12%	6%	15%	12%	9%	10%	12%	13%	11%
60+	5%	3%	2%	7%	3%	8%	3%	3%	4%	4%

2025 sample only. Not including household members with dual nationality (except UKR-RUS).

Individuals (5+ years) with a disability

Year	Bulgaria	Estonia	Hungary	Latvia	Lithuania	Moldova	Poland	Romania	Slovakia	Regional
2025	8%	3%	5%	7%	4%	12%	4%	9%	9%	6%

Not including household members with dual nationality (except UKR-RUS).

SECTION 02

Socio-economic inclusion**Employment rate — individuals aged 15–64 who are employed**

Year	Bulgaria	Estonia	Hungary*	Latvia	Lithuania	Moldova	Poland	Romania	Slovakia	Regional
2023	42%	n.a.	71%	n.a.	n.a.	38%	57%	33%	54%	54%
2024	62%	67%	59%	53%	50%	45%	67%	41%	66%	62%
2025	57%	74%	64%	65%	47%	41%	75%	51%	62%	67%

2025 Not including household members with dual nationality (except UKR-RUS).

Unemployment rate — individuals aged 15–64 in the labour force who are unemployed

Year	Bulgaria	Estonia	Hungary*	Latvia	Lithuania	Moldova	Poland	Romania	Slovakia	Regional
2023	16%	n.a.	9%	n.a.	n.a.	8%	14%	32%	15%	14%
2024	6%	13%	10%	12%	16%	19%	8%	20%	7%	10%
2025	18%	12%	9%	13%	28%	12%	8%	16%	9%	10%

2025 Not including household members with dual nationality (except UKR-RUS).

Labour force participation rate — individuals aged 15–64 who are employed or unemployed

Year	Bulgaria	Estonia	Hungary*	Latvia	Lithuania	Moldova	Poland	Romania	Slovakia	Regional
2023	51%	n.a.	78%	n.a.	n.a.	41%	67%	49%	63%	64%
2024	66%	77%	67%	62%	60%	56%	74%	52%	71%	69%
2025	72%	84%	71%	77%	67%	47%	81%	62%	68%	74%

2025 Not including household members with dual nationality (except UKR-RUS).

Individuals aged 15–64 with good knowledge (advanced or fluent) of the local language

Year	Bulgaria	Estonia	Hungary	Latvia	Lithuania	Moldova	Poland	Romania	Slovakia	Regional
2024	23%	8%	12%	6%	6%	7%	41%	11%	27%	30%
2025	26%	13%	15%	11%	12%	4%	57%	16%	50%	42%

2025 Not including household members with dual nationality (except UKR-RUS).

Households paying for rent (partially or fully)

Year	Bulgaria	Estonia	Hungary*	Latvia	Lithuania	Moldova	Poland	Romania	Slovakia	Regional
2023	61%	n.a.	57%	n.a.	n.a.	61%	80%	88%	15%	72%
2024	77%	99%	67%	72%	83%	71%	82%	94%	70%	81%
2025	81%	98%	62%	89%	93%	94%	94%	93%	90%	92%

Households with severe socio-material deprivation (SMSD)

Year	Bulgaria	Estonia	Hungary	Latvia	Lithuania	Moldova	Poland	Romania	Slovakia	Regional
2025	32%	9%	24%	10%	18%	30%	13%	35%	17%	19%

*2023 Hungary data include a purposive oversample of Ukrainians of Hungarian origin; results should be interpreted accordingly.

SECTION 03

Education

SEIS results are survey-based and may differ from official figures. School attendance is self-reported and not independently verified.

Children aged 6–15 attending formal school in host country

School year	Bulgaria	Estonia	Hungary	Latvia	Lithuania	Moldova	Poland	Romania	Slovakia	Regional
2022/23	31%	n.a.	81%	n.a.	n.a.	37%	80%	39%	71%	72%
2023/24	56%	93%	84%	65%	85%	60%	85%	52%	86%	78%
2024/25	73%	100%	93%	85%	77%	71%	92%	52%	94%	84%

Results may slightly differ from SEIS country reports, which use country-specific compulsory ages instead of the fixed 6–15 range applied here

Children aged 6–15 attending only online school

School year	Bulgaria	Estonia	Hungary	Latvia	Lithuania	Moldova	Poland	Romania	Slovakia	Regional
2022/23	59%	n.a.	15%	n.a.	n.a.	n.a.	15%	56%	24%	19%
2023/24	28%	4%	11%	27%	11%	27%	7%	38%	6%	14%
2024/25	18%	1%	7%	10%	7%	22%	2%	37%	6%	10%

SECTION 04

Health**Individuals who experienced a health problem in the last 30 days**

Year	Bulgaria	Estonia	Hungary	Latvia	Lithuania	Moldova	Poland	Romania	Slovakia	Regional
2023	26%	n.a.	30%	n.a.	n.a.	20%	29%	26%	28%	28%
2024	27%	31%	25%	29%	31%	37%	30%	36%	30%	31%
2025	25%	39%	22%	35%	22%	38%	29%	30%	25%	29%

Individuals with access to health services when needed

Year	Bulgaria	Estonia	Hungary	Latvia	Lithuania	Moldova	Poland	Romania	Slovakia	Regional
2023	76%	n.a.	88%	n.a.	n.a.	92%	89%	72%	80%	87%
2024	86%	90%	79%	95%	84%	87%	83%	73%	80%	82%
2025	92%	91%	78%	89%	88%	99%	83%	70%	85%	84%

Individuals (5+ years) experiencing mental health or psychosocial problems

Year	Bulgaria	Estonia	Hungary	Latvia	Lithuania	Moldova	Poland	Romania	Slovakia	Regional
2023	23%	n.a.	7%	n.a.	n.a.	12%	21%	26%	21%	20%
2024	24%	20%	22%	17%	27%	18%	26%	33%	21%	25%
2025	23%	25%	16%	28%	20%	14%	19%	27%	24%	21%

Individuals (5+ years) who experienced MHPSS problems and tried to access support

Year	Bulgaria	Estonia	Hungary	Latvia	Lithuania	Moldova	Poland	Romania	Slovakia	Regional
2023	n.a.	n.a.	n.a.	n.a.	n.a.	n.a.	n.a.	n.a.	n.a.	n.a.
2024	43%	45%	60%	57%	51%	35%	50%	34%	32%	46%
2025	42%	68%	63%	51%	56%	36%	56%	47%	40%	51%

Individuals (5+ years) who requested MHPSS and received formal support

Year	Bulgaria	Estonia	Hungary	Latvia	Lithuania	Moldova	Poland	Romania	Slovakia	Regional
2023	n.a.	n.a.	n.a.	n.a.	n.a.	n.a.	n.a.	n.a.	n.a.	n.a.
2024	63%	61%	58%	50%	66%	64%	76%	58%	71%	71%
2025	52%	66%	64%	76%	79%	79%	75%	50%	51%	68%

Individuals (5+ years) who accessed formal MHPSS and reported improved well-being

Year	Bulgaria	Estonia	Hungary	Latvia	Lithuania	Moldova	Poland	Romania	Slovakia	Regional
2023	n.a.	n.a.	n.a.	n.a.	n.a.	n.a.	n.a.	n.a.	n.a.	n.a.
2024	88%	93%	93%	87%	83%	87%	87%	86%	99%	88%
2025	96%	94%	87%	87%	98%	76%	95%	87%	77%	92%

Only counting formal support.