

KEY FIGURES

44,791

Asylum seekers since influx began in December 2013.

2,684

UAMS in Kakuma Camp.

57

SGBV survivors in safe shelters in the camp.

18.4

Litres of water provided per person per day in Kakuma.

100%

Amount by which food rations have been increased for January distribution cycle. Food is now distributed once a month.

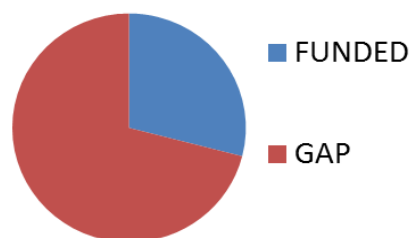
6,804

Number of roofed durable shelters in Kakuma 4.

FUNDING

USD26.7 MILLION

Requested for the operation



PRIORITIES

- Facilitating sector hand over processes for the various partners.
- Finalizing Partner Agreements for 2015.
- Relocating registered refugees to vacant shelters in KAK 4.
- Monitor trends of daily new arrivals and their unhindered access to asylum.

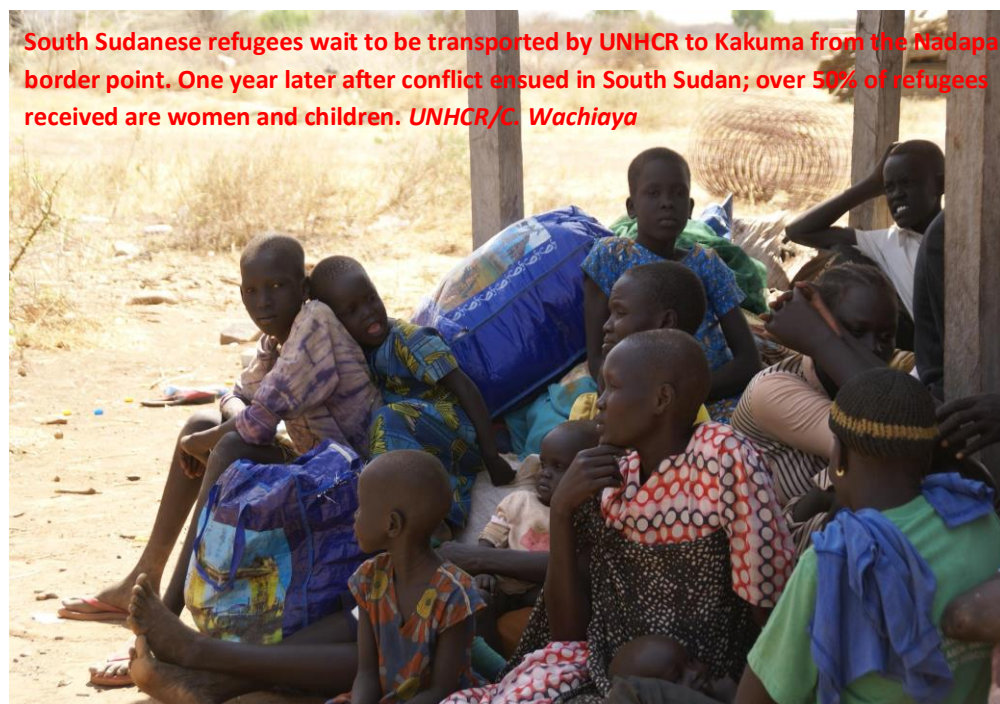
KENYA

KAKUMA OPERATIONAL UPDATE

1st to 15th JANUARY 2015

HIGHLIGHTS

- As at 15th January 2015, Kakuma had received 44,791 asylum seekers from South Sudan. This brings the camp population to 179,552. As at 11th January, 178,230 refugees had been registered by UNHCR and DRA, with South Sudanese making up 49.4% of the registered population.
- The 2014 Kenya Certificate of Primary Education (KCPE) results released by the Ministry of Education showed very encouraging performance by refugee candidates with schools registering above average mean score of 259 out of 500. Of the 1,467 candidates who sat the exam, 1300(340 female, 960 male) attained above 200 marks which is the required transition marks to secondary schools. This represents a high pass rate of 87.5% which is above the national average of 78%. The best candidate, a girl from Angelina Jolie scored 418 marks out of 500 marks, a performance that is also the best in the whole of Turkana West Sub-county.



- The DRC Head of communications and Fundraising Mr. Peter Hermann Kamph based in Denmark with two camera crew visited Kakuma from 5th – 9th January to document the operation for purposes of fundraising to support DRC activities in Kakuma. Among activities documented was the relocation of refugees from the reception center to the community as well as activities/interviews with the youth. For 2015, DRC is fund raising towards the theme “Against injustice” and activities will target youth aged between 17 and 25 years. DRC has been working in Kakuma 4 supporting South Sudanese new arrivals and youth.

UPDATE ON ACHIEVEMENTS

Operational Context

- UNHCR has continued field border monitoring teams to visit Nadapal three days a week with the aim of ensuring that asylum seekers received at the border have unhindered access to asylum in Kenya and are treated humanely.
- The facilitation of hand over processes of vehicles and equipment between partners is being undertaken to ensure smooth transition for the sectors that have been transferred to different partners. This has ensured that there is no disruption in the delivery of services to the beneficiaries while the Partner agreements are being finalized for 2015 implementation arrangements.

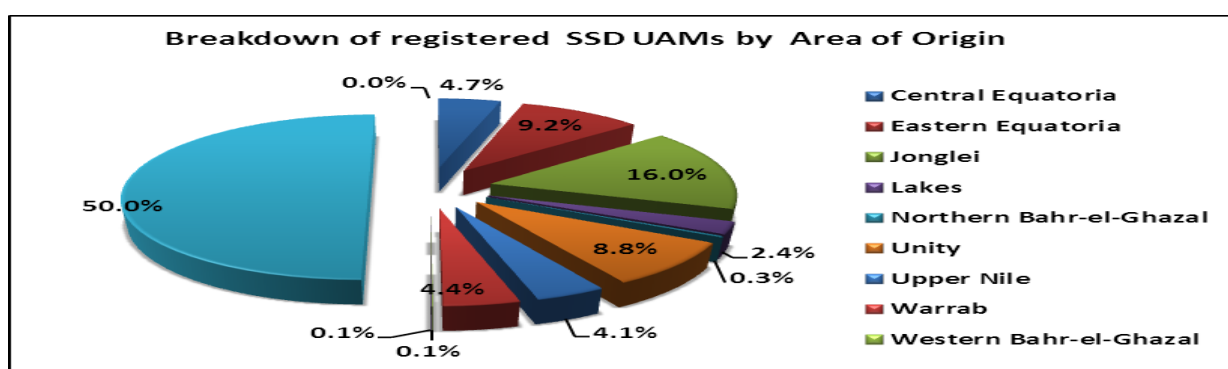
Achievements

Protection

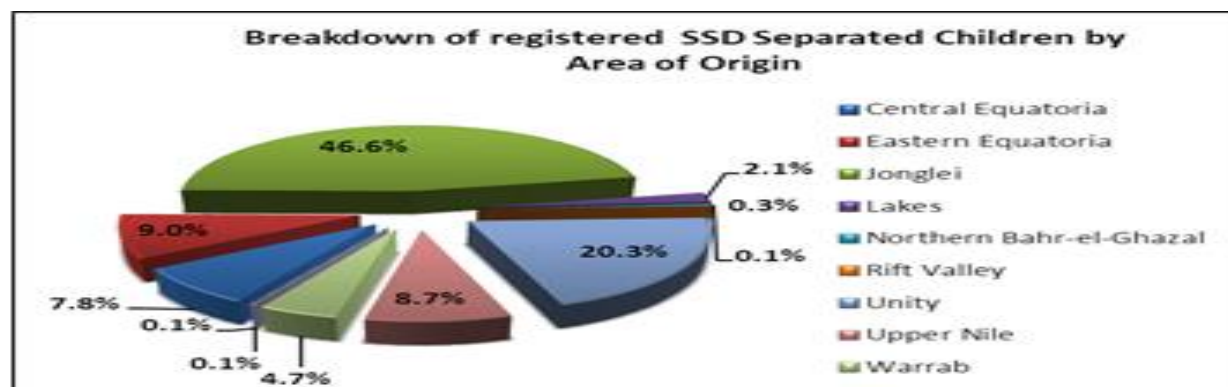
Achievements and Impact

Every week, the child protection data's change as new arrivals come in, some children are reunified with their family hence changing status leading to reduction/ increase in number of UASC.

- 1098** UAMs including 784 (152 F & 632 M) South Sudanese UAMs have been registered since December 2013 bringing the cumulative number of registered UAMs in Kakuma to **2684**. The breakdown of the registered South Sudanese by area of origin is reflected in the graph below



- 4589** separated children including 4,092 (2509 m & 1583f) South Sudanese have been registered since December 2013 bringing the cumulative number of registered separated children to 11,583 in Kakuma. Break down of South Sudanese SC by area of origin registered is reflected in the graph below.





Health

Achievements and Impact

- The health status of refugees remained stable during the week. The consultations per clinician per day was 1:62 compared to 1:71 in the previous week and crude and under-five mortality rates remained within NHCR/Sphere thresholds of <1/10,000 and <2/10,000 per day respectively.
- Hospital construction in Kakuma 4 commenced with ECHO's contribution of Euro 500,000 which is one-third of the projected total project cost. AAR Japan and has also pledged to support the construction and equipment of a pediatric ward to the tune of USD 110,000 and UNFPA, too, promised to fund the erection and equipment of an SGBV recovery Unit.
- The Ministry of Health continued to provide emergency health services to SS new arrivals at Nadapal border, specifically screening for notified diseases, vaccination of the under-15 year old against measles and polio and treatment of minor illnesses and injuries.

Food Security and Nutrition

Achievements and Impact

- During the period under review, support given to new arrivals from South Sudan at the reception centre continued uninterrupted. This includes screening for malnutrition of children under the age of five years, pregnant and lactating mother using weight for height and Mid Upper Arm Circumference from which a total of 95 children 6-59 months out of which 9 were found to have moderate acute malnutrition and 15 with severe acute malnutrition translating to the proportion of children with Global Acute malnutrition at 25.3% and those with Severe Acute malnutrition at 15.8%.
- World Food Program plans to increase the General food ration to 100% starting from January 2015. The subsequent distribution cycles have been changed to monthly from bi-weekly subject to availability of food at WFP warehouse in Kakuma.
- The following table shows monthly food basket for the upcoming monthly ration cycle.

Commodity	Ration scale(gms)
Sorghum	180
Maize	240
Pulses	60
CSB	40
Oil	35
Salt	5
Total	560

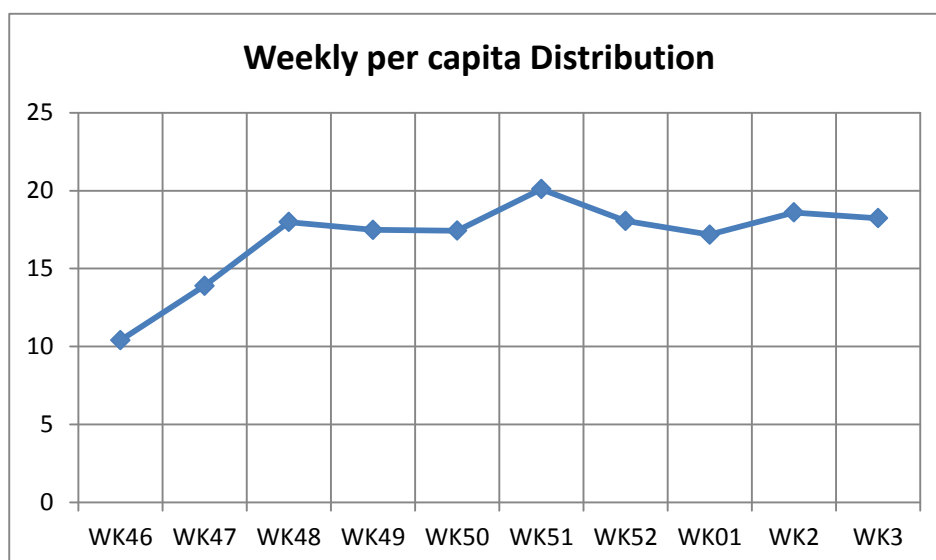


Water and Sanitation

Achievements and Impact

- Per capita water distribution in Kakuma 4 is at 18.24l/p/day. This is a decrease from the previous weeks of 20.1l/p/d. The decrease is attributed to the increase in camp population and breakdown of borehole 5 which has since been restored back to use.

- Improvement of water infrastructure in Kakuma 4 is ongoing with the construction of one new elevated steel tank in Kakuma 2 by LWF's own funds.
- The latrine to user ratio remains the same at 1:7 for the whole camp and 1:20 for Kakuma 4 only. No more latrines were constructed during the reporting period because the target for 2014 was met.
- NCR completed the KAP survey in the camp and a report was submitted.
- Following the taking over of all WASH activities in the camp by NRC, the hand over process has been ongoing since beginning of December 2014. Verification of assets and materials is ongoing with the help of NRC consultant from Nairobi.



Shelter and NFIs

Achievements and Impact

- As at 15th January 2015, a total of 6,804 shelters have been roofed out of 7,506 that had been planned in 2014. Assessment and roofing of Kakuma 1 old caseload has continued during the reporting period where the balances of 702 units have been scheduled for allocation to the old case load.
- Discussions have been held with Good Neighbors (K), a partner that has arrived in Kakuma to support the operation with 300 shelter units. Identification of beneficiaries will be conducted jointly with DRA and NCCK within the coming week.
- Plans are underway for a general distribution of NFIs to about 95,000 persons. This target population was registered in Kakuma by end 2012 and has been without these items for many years

Identified Needs and Remaining Gaps

- The need for land remains a critical and urgent one as the camp has surpassed its design capacity by over 60,000 refugees, resulting in overstretched facilities and congestion. Discussions are ongoing between UNHCR, DRA, the County Government, local leadership and the host community to secure land for a new camp within Kakuma's environs.

Working in partnership

- UNHCR continues to work closely with the Government, DRA and other partners to ensure support to refugees and asylum seekers is assured. Following the holiday break, bi-weekly Inter-Agency meetings have not been held these meeting will resume as of next week.

FINANCIAL INFORMATION

Total recorded contributions for the emergency operation amount to **US\$ 7.76 million** representing **29%** of the requested funding.

UNHCR is grateful for the critical support provided by donors who have contributed to this operation as well as those who have contributed to UNHCR programmes with un-earmarked and broadly earmarked funds.

Contacts:

Cathy Wachiaya, Public Information Officer, wachiaya@unhcr.org, Tel: +41227397530 Cell +254 728 602469

Girma Gebre-Kristos, Head of Sub-Office, gebrekr@unhcr.org, Tel: +41227397530, Cell +257 728 602464

Links:

Regional portal-<http://data.unhcr.org/SouthSudan/regional.php> Twitter: @UNHCR_Kenya Facebook: UNHCR Kenya