



Camp Opened: February 2009

Camp Phase: Care & Maintenance

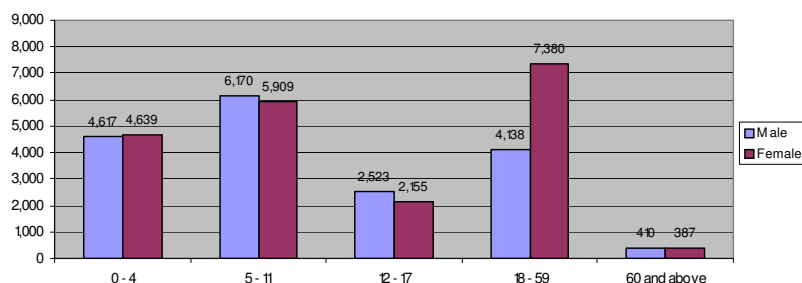
Refugee Population

38,328 as of 11th December 2011



Photo: Bokolmany refugee camp © UNHCR / Aug 2011

Figure 1: Population breakdown by age-group



Geographic Snapshot

GPS Coordinates	Longitude:	41.541801
	Latitude:	4.5432100
Number of Zones	17	
Number of Blocks	284	
Wings of Reception Centre	2	
Average Plot Size per Household	225 m ²	
Distance from Border	88 km	

Contextual Background

Pattern in Population Change

- Already established camp received large influx of Somali refugees in the first half of 2011.

Areas of Origin

- 56.87% are from Gedo, 22.97% are from Bay and the rest of the population is from various other locations in Somalia.

Cultural Background

- Sunni Muslim
- 49% are May May speakers from Rahanweyn clan, 24% are Mahatiri speakers from Maheren clan and the remaining are from various other Somali clans.

Main Occupations

- Pastoralists (livestock herding: goats, camels, cows, sheep and donkeys); professionals from Mogadishu

Tips for Humanitarians

- UNHCR provides protection and monitors delivery of services to all refugees in Bokolmany Camp.
- Camp Management is done **by ARRA with support from UNHCR**.
- Interagency Camp Coordination Meetings**, co-chaired by ARRA and UNHCR, are held bi-weekly in the local ARRA Office with humanitarian actors.
- All refugees in Bokolmany Camp are **individually registered** in UNHCR's proGres database and hold **ration cards**. Ration card numbers are useful for referral between partners and for distribution events.
- Registration verification** was last conducted in Bokolmany Camp in July 2010. Biometric (fingerprinting) has been used to register refugees living in Bokolmany.
- Treatment of SAM (Severe Acute Malnutrition) and Treatment of MAM (Moderate Acute Malnutrition), for both Under 5's and MOC (Malnourished Other Categories) Programme, a targeted feeding programme for severely malnourished children between 5 years and 18 years.

Administrative Structure

Role of Ethiopian Government in Bokolmany

- ARRA is active in the following sectors:**
 - ▶ Camp Management
 - ▶ Food Distribution
 - ▶ Nutrition (Blanket Feeding)
 - ▶ Hygiene & Sanitation
 - ▶ Distribution
 - ▶ Registration
 - ▶ Primary Healthcare
 - ▶ Primary Education
- ARRA staff posted inside the camp include:**
 - ▶ Camp Manager
 - ▶ Sanitation Specialist
 - ▶ Food & CRI Distribution Staff
 - ▶ Health & Nutrition Staff
 - ▶ Teachers
 - ▶ Protection Officers
 - ▶ Programme Officer

Role of Camp Residents in Self-Management

- Refugee Central Committee (RCC)** – is a resident coordination and leadership body that is consulted on multi-sectoral issues pertaining to camp life. It's made up of a Chairman, Secretary, Child Protection Representative, Women's Representative, Disabled Representative and Representatives from each Zone. Committee members are elected by camp residents.
- Women's Association** - runs a grinding mill (income generation project), helps with the distribution of sanitary pads, the mobilization of women for community projects and represents women's interests in camp management
- Food Distribution Committee** – provides information about food distribution to the community, monitors the scooping and provides feedback on the quality of food and the distribution process.
- Youth Committee** – represents youth, advocates for their interests and organizes sport activities.
- Refugee Security Committee ("neighbourhood watch")** - responsible for crowd control and overall conflict management in the camp; the committee also refers cases to ARRA and UNHCR Protection Staff.
- Child Protection Committee** - works with Save the Children to assist in identification of children with specific needs and to mobilize the community's children to attend school.


Local Administration


- The Kebele Chairman is responsible for local (non-refugee) administration on behalf of Dollo Ado Woreda, Somali Regional State, Ethiopia. The Kebele Chairman and his administrative committee are consulted about refugee-host community relationship, natural resource use and managing conflicts between the refugee and host communities, with the help of local elders.





UNHCR
The UN Refugee Agency

Bokolmany Camp: Who Does What Where


Health 	
Activities	Actors
<ul style="list-style-type: none"> Primary Health Care offers in-patient, out-patient, basic laboratory services, Immunization (EPI) and reproductive health including basic emergency obstetric and neonatal care services. 	ARRA
<ul style="list-style-type: none"> Mobile health teams have conducted a vaccination campaign for measles and polio, and also performed MUAC screening 	ARRA, UNHCR, UNICEF, MSF-S
<ul style="list-style-type: none"> HIV/AIDS Prevention 	PAPDA
<ul style="list-style-type: none"> Community-based mental health services 	IMC
<ul style="list-style-type: none"> Rehabilitation programmes for disabled people 	RaDO
Infrastructure	
<ul style="list-style-type: none"> Health Clinic has in-patient and out-patient treatment and EPI rooms. For reproductive health, there is an ante-natal care room, delivery room and post-natal care room. The clinic has a laboratory and a drug dispensary. A permanent health building is under construction. 	ARRA
Gaps	
<ul style="list-style-type: none"> Comprehensive Emergency obstetric care and emergency surgical services 	
<ul style="list-style-type: none"> Community based surveillance system, outbreak notification system and system for updating mortality rates 	
<ul style="list-style-type: none"> Drug dispensary regularly experiences medication shortages 	
<ul style="list-style-type: none"> Demand for specialized medical services and hospital referrals is greater than what can be met 	
<ul style="list-style-type: none"> Satellite Clinics where health services can be decentralized into the camp. 	


Nutrition 	
Activities	Actors
<ul style="list-style-type: none"> Treatment of SAM (Severe Acute Malnutrition), for both Under 5's and MOC (Malnourished Other Categories) Programme, a targeted feeding programme for severely malnourished children between 5 years and 18 years. 	MSF-Spain
<ul style="list-style-type: none"> Treatment of MAM (Moderate Acute Malnutrition), for both Under 5's and MOC (Malnourished Other Categories) Programme, a targeted feeding programme for moderately malnourished children between 5 years and 18 years. 	SC-US
<ul style="list-style-type: none"> Community Health workers follow up on patients already in the nutrition / health programmes and sensitize community to bring children to nutrition services 	MSF-Spain, SC-US
<ul style="list-style-type: none"> Blanket / complimentary feeding for all children under 5 	SC-US
Infrastructure	
<ul style="list-style-type: none"> 01 OTP Centre, 04 OTP planned 	MSF-Spain
<ul style="list-style-type: none"> Stabilization Centre (SC) where all severe acute malnourished children with complications are treated in an in-patient department. 01 service established. 	MSF-Spain
<ul style="list-style-type: none"> MAM / Blanket Feeding Centre, 04 SFP centers planned 	ARRA, SC-US
Gaps	
<ul style="list-style-type: none"> Strengthen outreach program and decentralization of services 	


Water, Hygiene & Sanitation 	
Activities	Actors
<ul style="list-style-type: none"> Trucking of treated water from the non-permanent water treatment plant 	IRC, UNHCR, LWF
<ul style="list-style-type: none"> Hygiene Promotion 	ARRA, UNHCR, IMC UNICEF
Infrastructure	
<ul style="list-style-type: none"> Permanent water system installation, including a water treatment plant is being installed near Bokolmany and a pipeline project is underway 	IRC, UNHCR
<ul style="list-style-type: none"> Family and communal latrines 	ARRA
Gaps	
<ul style="list-style-type: none"> Solid waste disposal 	
<ul style="list-style-type: none"> Repairs and maintenance of existing infrastructure 	


Protection & Community Services 	
Activities	Actors
<ul style="list-style-type: none"> Registration updates, lost ration cards and newborn and death registration ("continuous registration") 	UNHCR, ARRA
<ul style="list-style-type: none"> Protection monitoring and counseling; individual case follow-up 	UNHCR
<ul style="list-style-type: none"> On-site ARRA Protection Officer is the first point of contact for security liaison and cases of detention 	ARRA
<ul style="list-style-type: none"> Child protection activities, including establishing child-friendly spaces 	UNHCR, SC-US
<ul style="list-style-type: none"> Facilitation of family reunification, including for Unaccompanied Minors and Separated Children 	UNHCR, ARRA, SC-US
<ul style="list-style-type: none"> Grinding mill for women 	UNHCR
<ul style="list-style-type: none"> Child friendly spaces need playgrounds, games and materials for children's activities 	SC - US
<ul style="list-style-type: none"> Establishing programmes that prevent and respond to Sexual and Gender Based Violence incidents 	PAPDA, IMC, UNHCR
<ul style="list-style-type: none"> Provision of community services and psycho-social counseling 	UNHCR, PAPDA
<ul style="list-style-type: none"> Supporting refugees with specific needs 	UNHCR, RADO
<ul style="list-style-type: none"> Supporting camp self-management committees 	UNHCR, ARRA
<ul style="list-style-type: none"> Supporting Older People 	HelpAge
<ul style="list-style-type: none"> Provision of sanitary materials to women and girls reproductive age (13 – 49) 	UNHCR, ARRA
Infrastructure	
<ul style="list-style-type: none"> Meeting Hall 	IMC
<ul style="list-style-type: none"> UNHCR Offices and counseling rooms are planned 	UNHCR
Gaps	
<ul style="list-style-type: none"> Women's and Youth Centre 	
<ul style="list-style-type: none"> Capacity building for Camp Security and Police Officers in the camp 	
<ul style="list-style-type: none"> Refugees Community Centre 	
<ul style="list-style-type: none"> Provision of professional psychosocial/counseling services 	
<ul style="list-style-type: none"> Self reliance 	
<ul style="list-style-type: none"> Police Post needs a building 	
<ul style="list-style-type: none"> Community outreach / information dissemination to the beneficiaries/to the local authorities 	
<ul style="list-style-type: none"> Refugee/Host community conflict resolution 	


Bokolmany Camp: Who Does What Where (continued)

Shelter 	
Activities	Actors
▪ Emergency shelter (tent) supply and erection	ARRA, UNHCR, AHA
▪ Transitional shelter provision	ARRA, UNHCR, AHA
▪ Transitional shelter funding	UNHCR
Infrastructure	
▪ Emergency Shelter: Lightweight Emergency Tent; 2 rooms; can accommodate average family size of 5 persons; 15-21m ²	UNHCR
▪ Emergency Shelter: Family Tent; 1 room; can accommodate average family size of 5 persons; 16 m ² main floor area, plus two 3.5m ² vestibules, for a total area of 23 m ²	UNHCR
▪ Transitional Shelter: dome shelters; 1 room; (metal domes covered with plastic sheeting)	AHA, UNHCR
▪ Permanent Shelter for persons with specific needs	AHA
Gaps	
▪ Insufficient number of plots for new arrivals	
▪ Replacement of severely damaged or destroyed emergency tents	
▪ Survey Results prepared and send for feedback	

Core Relief Items 	
Activities	Actors
▪ Sleeping mats, jerry cans, buckets, kitchen sets, soap, women's sanitary napkins, female underwear and blankets have been distributed to pre-2011 arrivals	UNHCR, ARRA
Infrastructure	
▪ Central Logistics Base in Hilaweyn Camp (which supplies Bokolmany) consists of 5 rubhalls	UNHCR
▪ 2 rubhalls for storing food and CRIs	ARRA
Gaps	
▪ New arrivals have not received CRI distribution	
▪ Cooking stoves	
▪ Fuel	
▪ Lamps	

Logistics 	
Activities	Actors
▪ Truck fleet for field deliveries	UNHCR
▪ Transportation of family reunification cases	IOM
▪ Office and facilities construction	UNHCR
▪ Vehicle maintenance, generator repair and other technical support services	THW
Infrastructure	
▪ Vehicle Maintenance, generator repair and technical support services are provided by THW in UNHCR Dollo Ado compound	
▪ ARRA is assisting with storage of CRIs	
▪ Logistics infrastructure for Bokolmany Camp is located in Hiloweyn Camp and Dollo Ado	
Gaps	
▪ Road to camp needs upgrading and repairing	

Education 	
Activities	Actors
▪ Primary education school is under construction	ARRA, UNICEF
▪ School supplies	UNICEF
Infrastructure	
▪ Emergency school	SC-US
▪ Two primary schools are being constructed for grades 1 – 4	SC-US
▪ One primary school is being constructed for grades 5 – 8	ARRA
Gaps	
▪ Primary and secondary school facilities (classrooms, books, desks, teachers, school WASH facilities)	

Environment 	
Activities	Actors
▪ Environment assessment	PAPDA
Infrastructure	
▪ n/a	
Gaps	
▪ Household fuel / fuel-efficient stoves	
▪ Environment protection mechanisms	

UNHCR gratefully acknowledges the support of the following partners in Bokolmany Camp:



Bokolmany Camp: Who Does What Where (continued)

Food



Activities	Actors
▪ Food supply and transportation	WFP
▪ Food distribution	ARRA, UNHCR
Infrastructure	
▪ Distribution point is under construction	ARRA
Gaps	
▪ Food distribution system and post-distribution monitoring (no accurate process, no accurate food and stock report)	
▪ Two additional distribution points	

Livelihoods



Activities	Actors
▪ Micro-Credit	PAPDA
▪ Women's association grinding mill	UNHCR
Infrastructure	
▪ n/a	
Gaps	
▪ No firewood program	

UNHCR gratefully acknowledges the support of the following partners in Bokolmany Camp:

