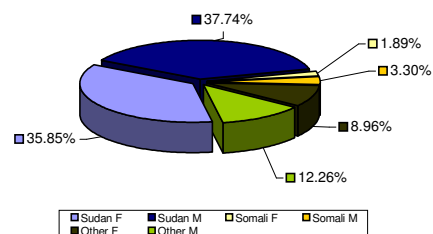


## Weekly New Registration Population Composition

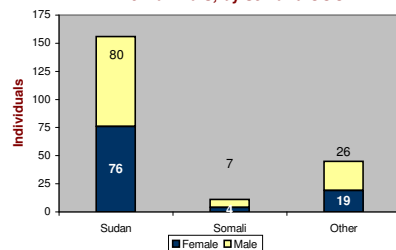
30/1/2012 - 03/2/2012

	Total		Breakdown by Country of Origin / Sex					
	F	M	Sudan		Somali		Other	
Individuals	99	113	F	M	F	M	F	M
			76	80	4	7	19	26
Households	37	31						
			28	10	3	1	6	20

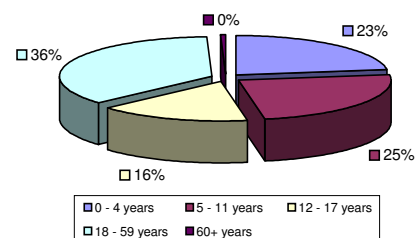
New arrivals, by sex and COO



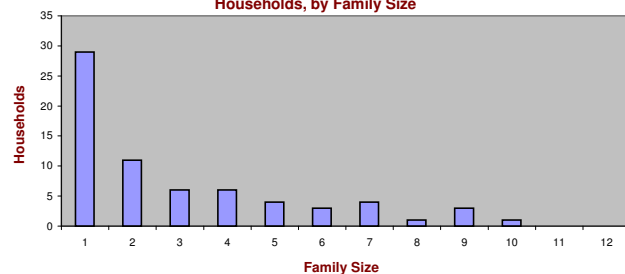
New arrivals, by sex and COO



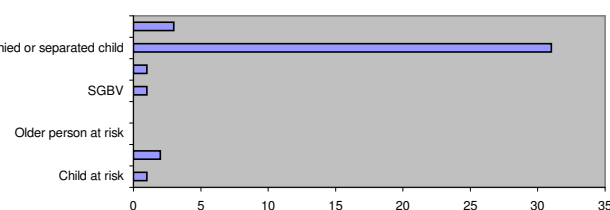
New Arrivals Breakdown, By Age Cohort



Households, by Family Size



Special Needs Identified



**Notes:** A total of **866** new arrivals have been registered since the start of 2012; with 92 arriving from Burundi, 64 from Democratic Republic of Congo (DRC), 2 from Eritrea, 50 from Ethiopia, 1 from Iran, 2 from Rwanda, 56 from Somalia, 594 from Sudan and 5 from Uganda.

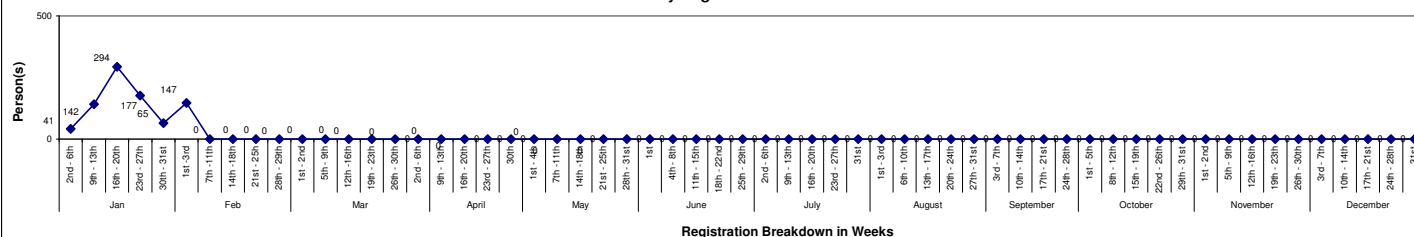
**212** individuals were registered during the fifth week of 2012 [**30th January - 3rd February 2012**]; 21 from Burundi, 21 from DRC, 1 from Iran, 11 from Somalia and 156 from Sudan. As at 5th February 2012, the overall population in Kakuma Refugee Camp stood at **86,876**.

The average family size registered during the reporting period stood at **3.12** individuals. Family size 1 households represented **42.65%** of all newly registered households.

As at 3rd February 2012, the total South Sudanese 'returnee' figure stands at **21** individuals; mainly from Upper Nile, Equatoria and few Bahr el Ghazal States.

□

Weekly Registration Trends



NB: This report reflects registration trends. In addition to new arrivals reported here, the overall population in Kakuma also increases through new births, in-situ registration (of persons who arrived in a previous period but reported for registration later), family reunification, and various other data adjustments. Analysis and projections are based on actual persons registered in the UNHCR registration database (proGres)