

Dollo Ado Population Statistical Report

As of 10 Mar 2012

Figure 1.1 - Total Refugee Population in Dollo Ado

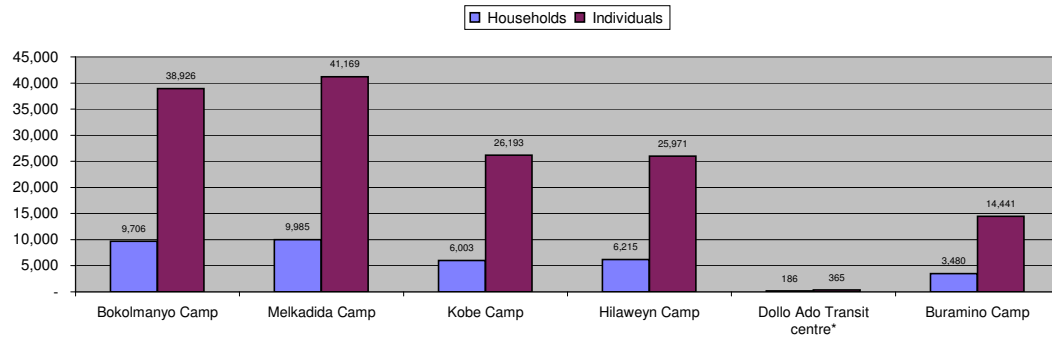


Table 1.1 - Total Refugee Population in Dollo Ado

Site/Camp	As of 31 Dec 2010		As of 31 Dec 2011		Current Total	
	Households	Individuals	Households	Individuals	Households	Individuals
Bokolmanyo Camp	3,988	14,988	9,624	38,501	9,706	38,926
Melkadida Camp	6,452	25,491	10,024	40,696	9,985	41,169
Kobe Camp	n/a	n/a	5,946	26,033	6,003	26,193
Hilaweyn Camp	n/a	n/a	6,119	25,747	6,215	25,971
Buramino Camp	n/a	n/a	911	4,045	3,480	14,441
Camp Sub-Total	10,440	40,479	32,624	135,022	35,389	146,700
Dollo Ado Transit centre*	n/a	n/a	1,902	7,284	186	365
Temporary Locations Sub-Total	n/a	n/a	n/a	n/a	186	365
GRAND TOTAL ALL LOCATIONS	10,440	40,479	34,526	142,306	35,575	147,065

* Individuals currently in the Transit Centre. All new arrivals are registered at the Transit Centre and are subsequently relocated to the camps.

Figure 1.2 - New Arrivals at Reception Centre During Current Month (Weekly)

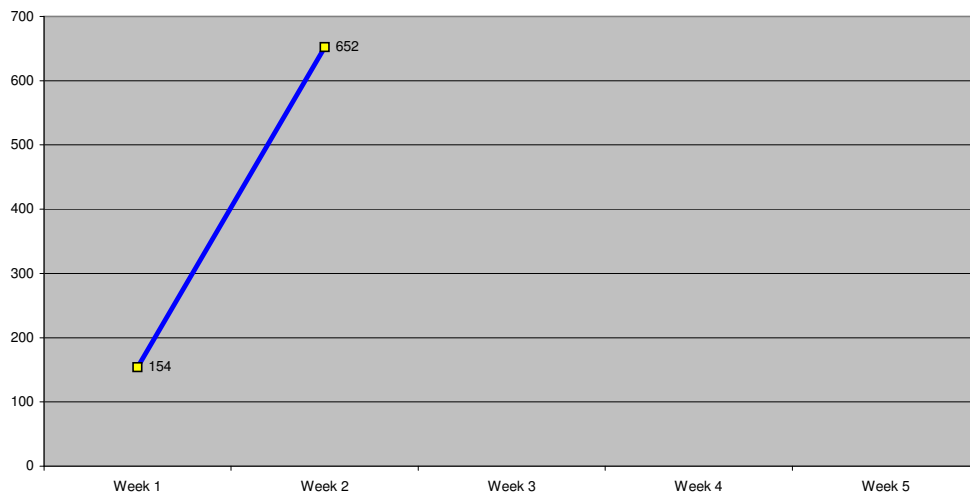


Table 1.2 - Daily New Arrivals and Pre-registration by ARRA at the Reception Centre

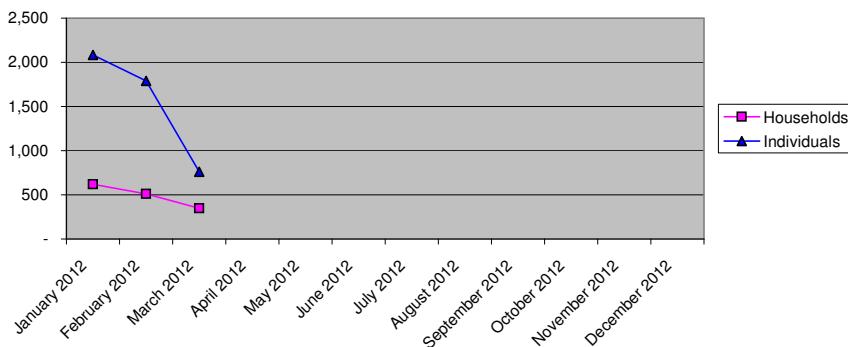
Date	Newly Arrived Individuals	Pre-registered by ARRA *
Thu 01 Mar 12	46	46
Fri 02 Mar 12		
Sat 03 Mar 12	108	108
Sun 04 Mar 12		
Mon 05 Mar 12	236	220
Tue 06 Mar 12	139	128
Wed 07 Mar 12	79	71
Thu 08 Mar 12	75	70
Fri 09 Mar 12	81	76
Sat 10 Mar 12	42	42
Sun 11 Mar 12		
Mon 12 Mar 12		
Tue 13 Mar 12		
Wed 14 Mar 12		
Thu 15 Mar 12		
Fri 16 Mar 12		
Sat 17 Mar 12		
Sun 18 Mar 12		
Mon 19 Mar 12		
Tue 20 Mar 12		
Wed 21 Mar 12		
Thu 22 Mar 12		
Fri 23 Mar 12		
Sat 24 Mar 12		
Sun 25 Mar 12		
Mon 26 Mar 12		
Tue 27 Mar 12		
Wed 28 Mar 12		
Thu 29 Mar 12		
Fri 30 Mar 12		
Sat 31 Mar 12		
TOTAL THIS MONTH	806	761

* Pre-registration by ARRA is not necessarily done on the day of Arrival

** Represent days when ARRA was not receiving Asylum seekers.

The number of those received during these days is include in the figure of next receiving day.

Figure 1.3 - Pre-Registration Trends in 2012 (Reception Centre/ ARRA)



Note: these are registration volumes by month, not cumulative figures.

Table 1.3 - Pre-Registration Trends in 2012 (Reception Centre/ ARRA)

Month	Households	Individuals
January 2012	621	2,084
February 2012	512	1,789
March 2012	349	761
April 2012		
May 2012		
June 2012		
July 2012		
August 2012		
September 2012		
October 2012		
November 2012		
December 2012		
Total	1,482	4,634

Table 1.4 - Registration & Relocation Trends in Transit Centre up to date

Stage of Registration & Relocation	Individuals
Total individuals fully registered so far this month	737
Total individuals relocated to camps so far this month	759
Total individuals fully processed (have ration card), but not yet relocated	264

Camp population by Age and Sex breakdown

As of 10 Feb 2012

Table 2.1 - ALL CAMPS Demographic Breakdown*

Age Group	Sex				Total	
	Male	(%)	Female	(%)	Total	(%)
0 - 4	14,900	10.2%	14,506	9.9%	29,406	20.0%
5 - 11	25,639	17.5%	24,702	16.8%	50,341	34.3%
12 - 17	9,794	6.7%	8,736	6.0%	18,530	12.6%
18 - 59	16,546	11.3%	28,388	19.4%	44,934	30.6%
60 and above	1,780	1.2%	1,709	1.2%	3,489	2.4%
Total ALL CAMPS	68,659	46.8%	78,041	53.2%	146,700	100.0%

* These total figures apply only to camps, not to the Transit Centre or Reception Centre

Figure 2.1 - ALL CAMPS Demographic Breakdown*

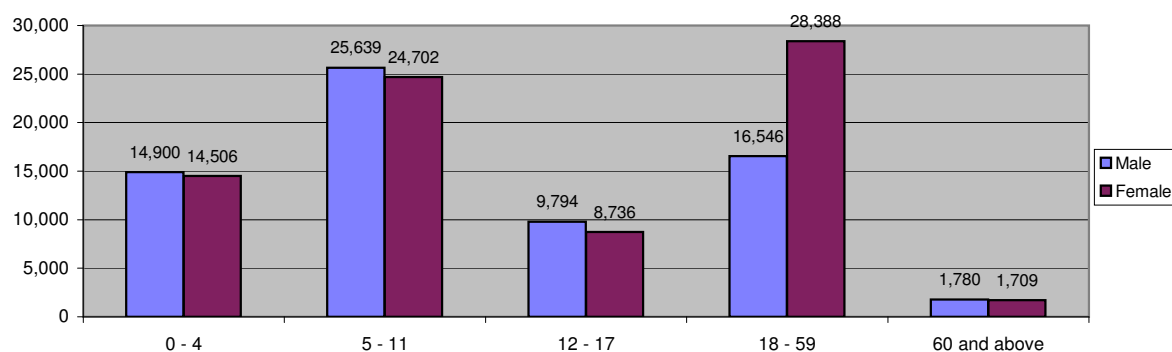


Table 2.2 - Melkadida Camp Demographic Breakdown

911

Age Group	Sex				Total	
	Male	(%)	Female	(%)	Total	(%)
0 - 4	4,039	9.8%	3,793	9.2%	7,832	19.0%
5 - 11	7,379	17.9%	7,201	17.5%	14,580	35.4%
12 - 17	2,916	7.1%	2,740	6.7%	5,656	13.7%
18 - 59	4,176	10.1%	8,005	19.4%	12,181	29.6%
60 and above	465	1.1%	455	1.1%	920	2.2%
Total Malkadida	18,975	46.1%	22,194	53.9%	41,169	100.0%

Figure 2.2 - Melkadida Camp Demographic Breakdown*

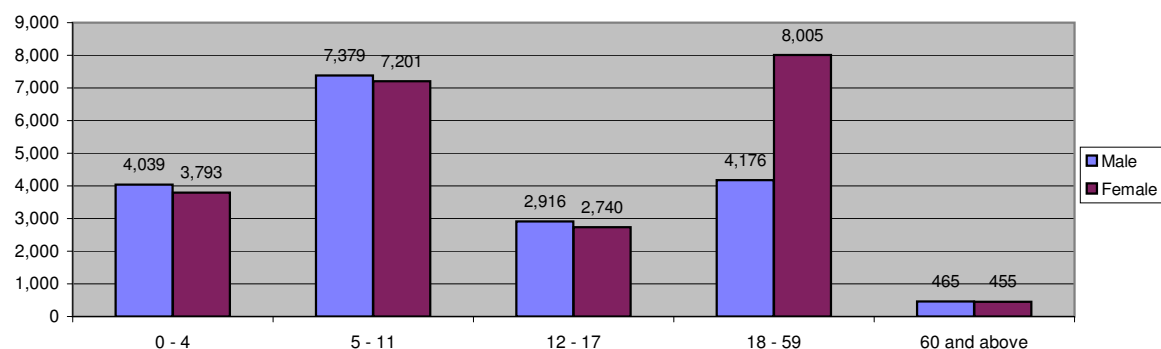


Table 2.3 - Bokolmanyo Camp Demographic Breakdown

Age Group	Sex				Total	
	Male	(%)	Female	(%)	Total	(%)
0 - 4	3,632	9.3%	3,702	9.5%	7,334	18.8%
5 - 11	6,812	17.5%	6,569	16.9%	13,381	34.4%
12 - 17	2,871	7.4%	2,417	6.2%	5,288	13.6%
18 - 59	4,423	11.4%	7,665	19.7%	12,088	31.1%
60 and above	431	1.1%	404	1.0%	835	2.1%
Total Bokolmanyo	18,169	46.7%	20,757	53.3%	38,926	100.0%

Figure 2.3 - Bokolmanyo Camp Demographic Breakdown*

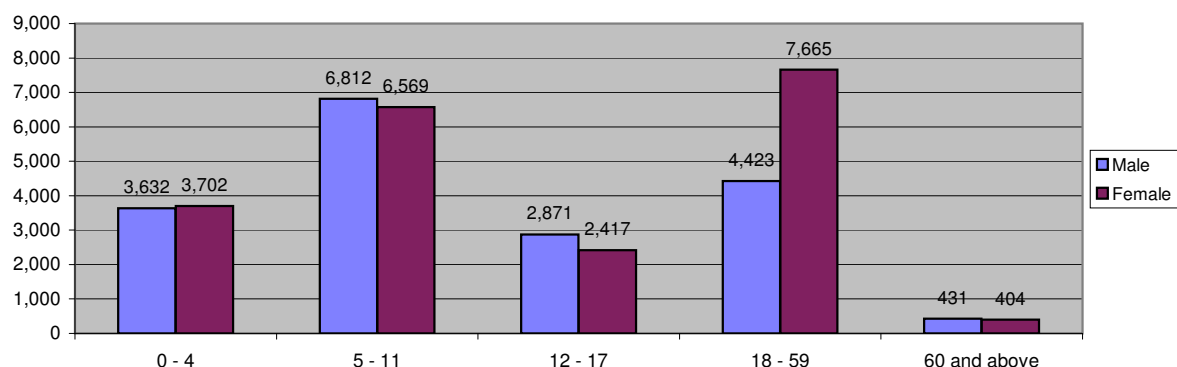


Table 2.4 - Kobe Camp Demographic Breakdown

Age Group	Sex				Total	
	Male	(%)	Female	(%)	Total	(%)
0 - 4	2,769	10.6%	2,652	10.1%	5,421	20.7%
5 - 11	4,505	17.2%	4,151	15.8%	8,656	33.0%
12 - 17	1,623	6.2%	1,368	5.2%	2,991	11.4%
18 - 59	3,361	12.8%	4,961	18.9%	8,322	31.8%
60 and above	419	1.6%	384	1.5%	803	3.1%
Total Kobe	12,677	48.4%	13,516	51.6%	26,193	100.0%

Figure 2.4 - Kobe Camp Demographic Breakdown*

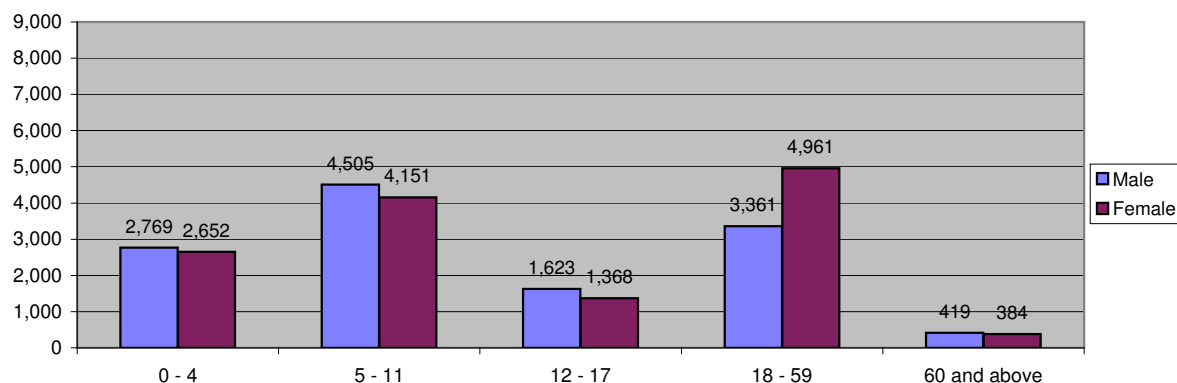


Table 2.5 - Hilaweyn Camp Demographic Breakdown

Age Group	Sex				Total	
	Male	(%)	Female	(%)	Total	(%)
0 - 4	2,777	10.7%	2,725	10.5%	5,502	21.2%
5 - 11	4,478	17.2%	4,405	17.0%	8,883	34.2%
12 - 17	1,582	6.1%	1,426	5.5%	3,008	11.6%
18 - 59	2,992	11.5%	4,989	19.2%	7,981	30.7%
60 and above	313	1.2%	284	1.1%	597	2.3%
Total Hilaweyn	12,142	46.8%	13,829	53.2%	25,971	100.0%

Figure 2.5 - Hilaweyn Camp Demographic Breakdown*

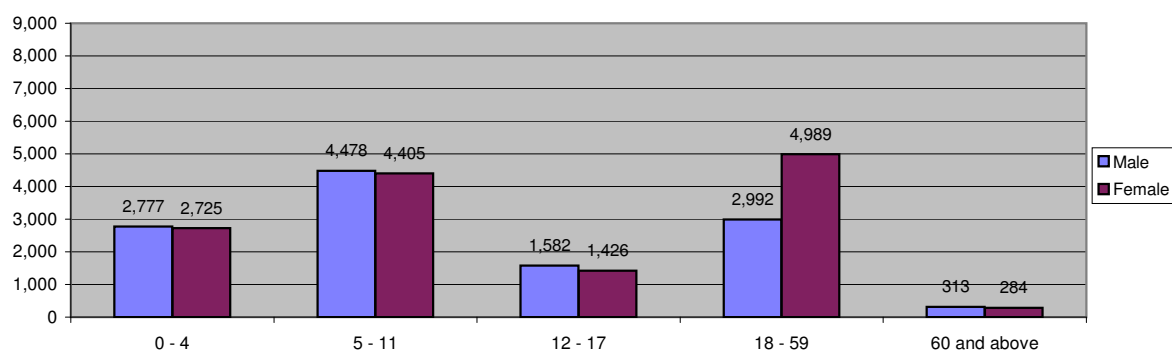


Table 2.6 - Buramino Camp Demographic Breakdown

Age Group	Sex				Total	
	Male	(%)	Female	(%)	Total	(%)
0 - 4	1,683	11.7%	1,634	11.3%	3,317	23.0%
5 - 11	2,465	17.1%	2,376	16.5%	4,841	33.5%
12 - 17	802	5.6%	785	5.4%	1,587	11.0%
18 - 59	1,594	11.0%	2,768	19.2%	4,362	30.2%
60 and above	152	1.1%	182	1.3%	334	2.3%
Total Buramino	6,696	46.4%	7,745	53.6%	14,441	100.0%

Figure 2.6 - Buramino Camp Demographic Breakdown*

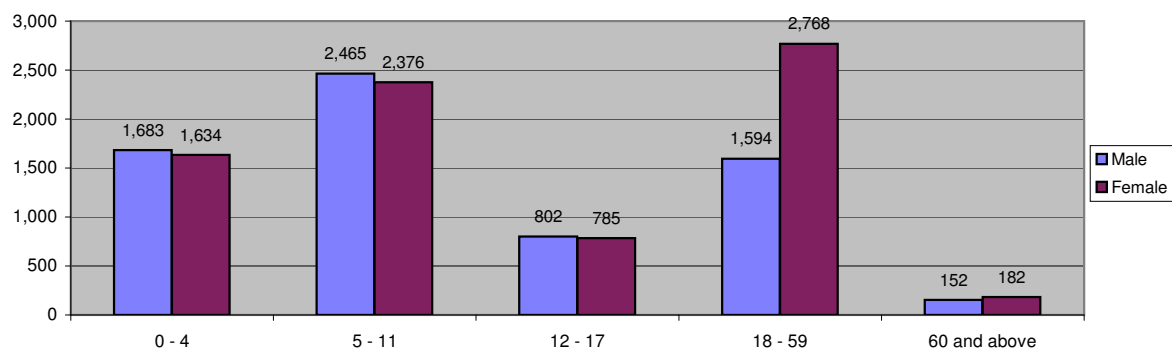


Table 2.7 - Dollo Ado Transit Centre Demographic Breakdown

Age Group	Sex				Total	
	Male	(%)	Female	(%)	Total	(%)
0 - 4	31	8.5%	43	11.8%	74	20.3%
5 - 11	39	10.7%	39	10.7%	78	21.4%
12 - 17	32	8.8%	18	4.9%	50	13.7%
18 - 59	106	29.0%	47	12.9%	153	41.9%
60 and above	8	2.2%	2	0.5%	10	2.7%
Total TransitCentre	216	59.2%	149	40.8%	365	100.0%

Figure 2.7 - Dollo Ado Transit Centre Demographic Breakdown

