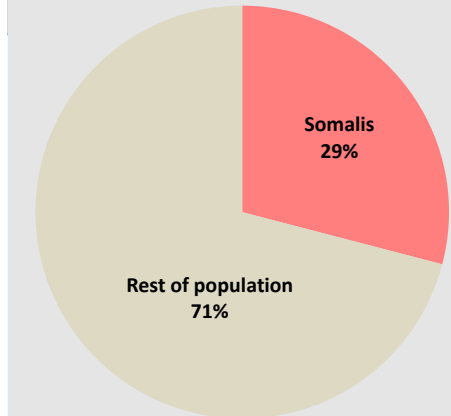
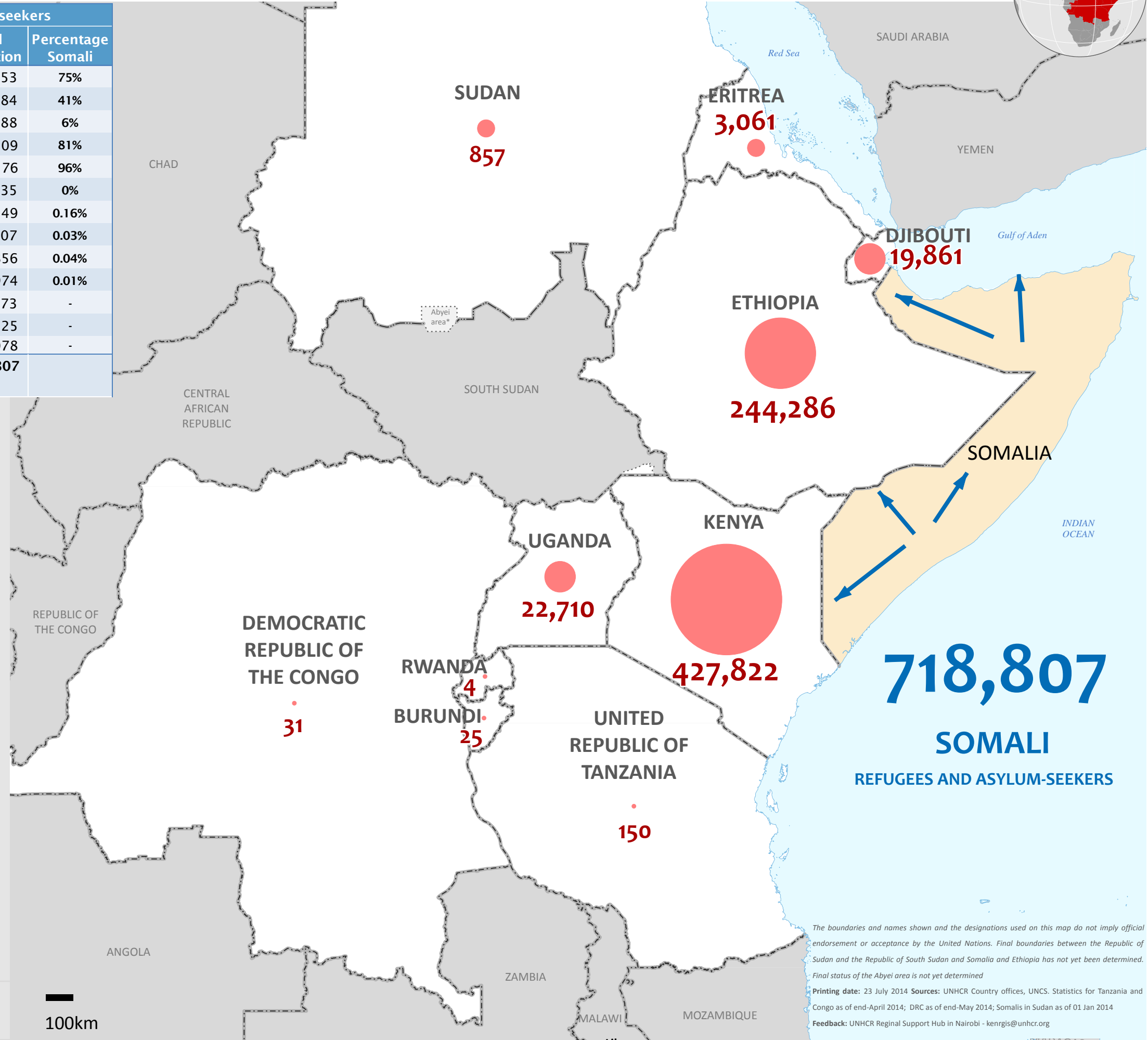
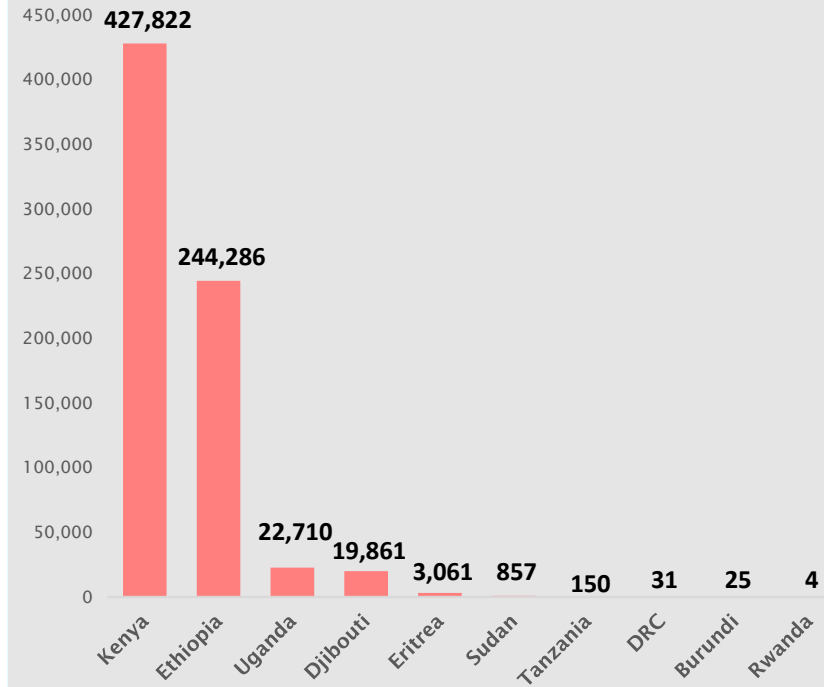


| | | Refugees and asylum-seekers | | | |
|-------------------|-------------------------|-----------------------------|--------------------|------------------|-------------------|
| | | Somalis | Rest of population | Total population | Percentage Somali |
| Country of Asylum | Kenya | 427,822 | 141,631 | 569,453 | 75% |
| | Ethiopia | 244,286 | 344,398 | 588,684 | 41% |
| | Uganda | 22,710 | 369,378 | 392,088 | 6% |
| | Djibouti | 19,861 | 4,648 | 24,509 | 81% |
| | Eritrea | 3,061 | 115 | 3,176 | 96% |
| | Sudan | 857 | 251,578 | 252,435 | 0% |
| | United Rep. of Tanzania | 150 | 90,999 | 91,149 | 0.16% |
| | Dem. Rep. of the Congo | 31 | 117,876 | 117,907 | 0.03% |
| | Burundi | 25 | 56,831 | 56,856 | 0.04% |
| | Rwanda | 4 | 72,970 | 72,974 | 0.01% |
| | South Sudan | - | 240,673 | 240,673 | - |
| | Republic of Congo | - | 49,325 | 49,325 | - |
| | Somalia | - | 12,078 | 12,078 | - |
| | Total | 718,807 | 1,752,500 | 2,471,307 | |
| | Percentage | 29% | 71% | | |

Percentage population of Somali origin in the region



Number of Somalis by country of asylum in the region



The boundaries and names shown and the designations used on this map do not imply official endorsement or acceptance by the United Nations. Final boundaries between the Republic of Sudan and the Republic of South Sudan and Somalia and Ethiopia has not yet been determined. Final status of the Abyei area is not yet determined. Printing date: 23 July 2014 Sources: UNHCR Country offices, UNCS. Statistics for Tanzania and Congo as of end-April 2014; DRC as of end-May 2014; Somalis in Sudan as of 01 Jan 2014 Feedback: UNHCR Regional Support Hub in Nairobi - kenrgis@unhcr.org