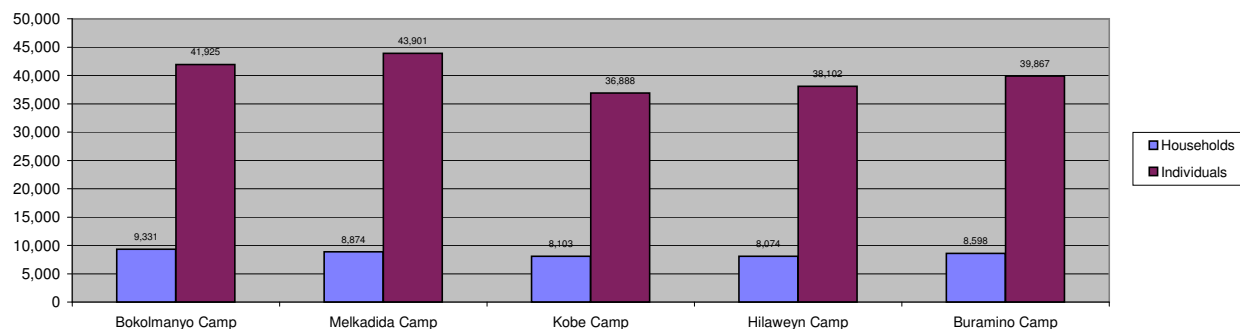


## Dollo Ado Population end of Month Statistical Report

*As of 31 March 2014*

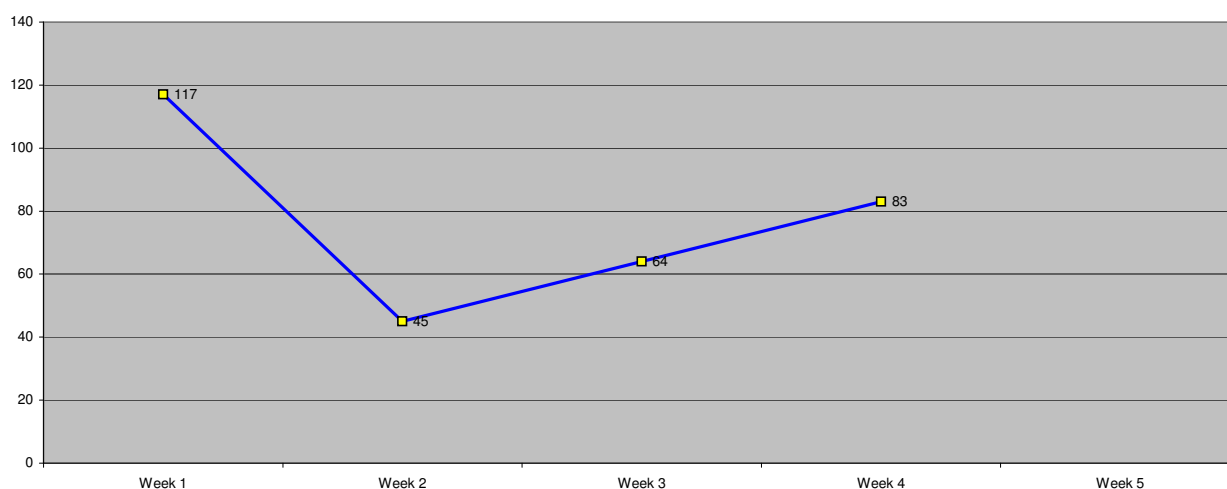
**Figure 1.1 - Total Refugee Population in Dollo Ado**



**Table 1.1 - Total Refugee Population in Dollo Ado**

Site/Camp	Current Total		As of end 2010		As of end 2011		As of end 2012		As of end 2013	
	Households	Individuals	Households	Individuals	Households	Individuals	Households	Individuals	Households	Individuals
Bokolmanyo Camp	9,331	41,925	3,988	14,988	9,624	38,501	9,878	40,423	9,400	41,670
Melkadida Camp	8,874	43,901	6,452	25,491	10,024	40,696	9,350	42,365	8,887	43,480
Kobe Camp	8,103	36,888	n/a	n/a	5946	26033	7,452	31,656	8,067	36,488
Hilaweyn Camp	8,074	38,102	n/a	n/a	6119	25747	7,191	30,960	8,012	37,305
Buramino Camp	8,598	39,867	n/a	n/a	911	4045	8,837	35,207	8,851	40,114
<b>Camp Sub-Total</b>	<b>42,980</b>	<b>200,683</b>	<b>10,440</b>	<b>40,479</b>	<b>31,713</b>	<b>130,977</b>	<b>42,708</b>	<b>180,611</b>	<b>43,217</b>	<b>199,057</b>
Dollo Ado Reception centre*	1	1	n/a	n/a	-	-	-	-	-	-
<b>Temporary Locations Sub-Total</b>	<b>1</b>	<b>1</b>	<b>n/a</b>	<b>n/a</b>	<b>-</b>	<b>-</b>	<b>-</b>	<b>-</b>	<b>-</b>	<b>-</b>
<b>GRAND TOTAL ALL LOCATIONS</b>	<b>42,981</b>	<b>200,684</b>	<b>10,440</b>	<b>40,479</b>	<b>31,713</b>	<b>130,977</b>	<b>42,708</b>	<b>180,611</b>	<b>43,217</b>	<b>199,057</b>

**Figure 1.2 - New Arrivals at Reception Centre by Week during the Current Month**



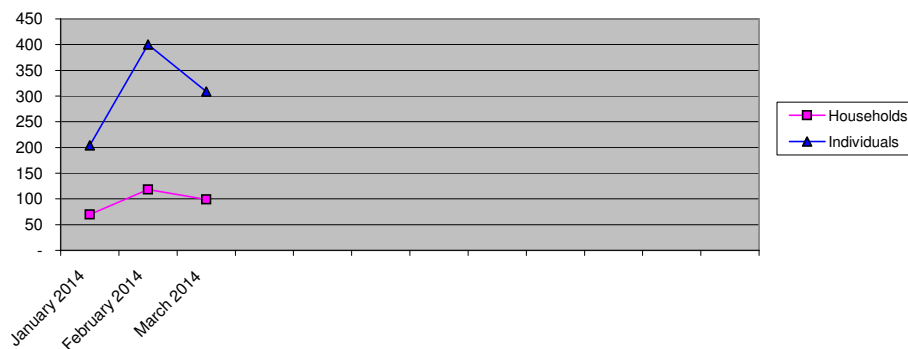
**Table 1.2 - Daily New Arrivals Registered by UNHCR at the Reception Centre**

Date	Newly Arrived Individuals	Pre-registered by UNHCR *
1-Mar-2014	0	0**
2-Mar-2014	0	0**
3-Mar-2014	29	29
4-Mar-2014	25	25
5-Mar-2014	33	33
6-Mar-2014	23	23
7-Mar-2014	7	7
8-Mar-2014	0	0**
9-Mar-2014	0	0**
10-Mar-2014	13	13
11-Mar-2014	0	0**
12-Mar-2014	4	4
13-Mar-2014	17	17
14-Mar-2014	11	11
15-Mar-2014	0	0**
16-Mar-2014	0	0**
17-Mar-2014	6	6
18-Mar-2014	14	14
19-Mar-2014	14	14
20-Mar-2014	30	30
21-Mar-2014	0	0**
22-Mar-2014	0	0**
23-Mar-2014	0	0**
24-Mar-2014	21	21
25-Mar-2014	16	16
26-Mar-2014	2	2
27-Mar-2014	21	21
28-Mar-2014	23	23
29-Mar-2014	0	0**
30-Mar-2014	0	0**
31-Mar-2014	0	0**
<b>TOTAL THIS MONTH</b>	<b>309</b>	<b>309</b>

\* Blanks indicate days when UNHCR was not register refugees.

The number of those received during these days is included in the figure of next receiving day.

**Figure 1.3 - Pre-Registration Trends in 2014 (Reception Centre/ UNHCR) \***



\* These are registration volumes by month, not cumulative figures.

**Table 1.3 - Pre-Registration Trends in 2014 (Reception Centre/ UNHCR)**

Month	Households	Individuals
January 2014	70	204
February 2014	118	400
March 2014	99	309
<b>Total</b>	<b>287</b>	<b>913</b>

**Table 1.4 - Registration & Relocation Trends in Reception Centre for the month of July**

Stage of Registration & Relocation	Individuals
Total individuals fully registered so far this month	309
Total individuals relocated to camp so far this month	313
Total Individuals fully processed (hold ration card), but not yet relocated	1

## Camp population by Age and Sex breakdown

As of 31 March 2014

Table 2.1 - ALL CAMPS Demographic Breakdown\*

Age Group	Sex				Total	
	Male	( % )	Female	( % )	Total	( % )
0 - 4	16,899	8.4%	16,839	8.4%	33,738	16.8%
5 - 11	36,574	18.2%	35,967	17.9%	72,541	36.1%
12 - 17	16,119	8.0%	14,419	7.2%	30,538	15.2%
18 - 59	21,646	10.8%	37,563	18.7%	59,209	29.5%
60 and above	2,397	1.2%	2,260	1.1%	4,657	2.3%
<b>Total ALL CAMPS</b>	<b>93,635</b>	<b>46.7%</b>	<b>107,048</b>	<b>53.3%</b>	<b>200,683</b>	<b>100.0%</b>

\* These total figures apply only to camps, not to the Transit Centre and Reception Centre

Figure 2.1 - ALL CAMPS Demographic Breakdown\*

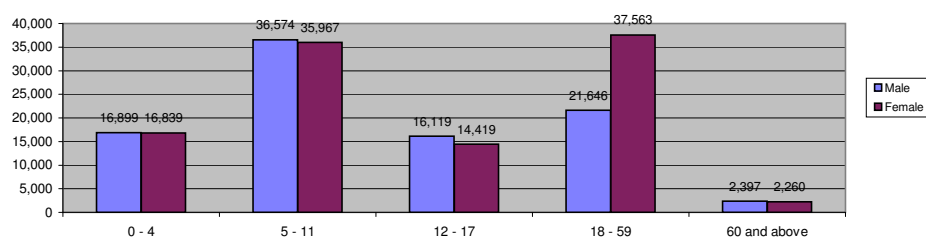


Table 2.2 - Melkadida Camp Demographic Breakdown

Age Group	Sex				Total	
	Male	( % )	Female	( % )	Total	( % )
0 - 4	3,367	7.7%	3,257	7.4%	6,624	15.1%
5 - 11	8,087	18.4%	7,847	17.9%	15,934	36.3%
12 - 17	3,907	8.9%	3,634	8.3%	7,541	17.2%
18 - 59	4,451	10.1%	8,419	19.2%	12,870	29.3%
60 and above	481	1.1%	451	1.0%	932	2.1%
<b>Melkadida Total</b>	<b>20,293</b>	<b>46.2%</b>	<b>23,608</b>	<b>53.8%</b>	<b>43,901</b>	<b>100.0%</b>

Figure 2.2 - Melkadida Camp Demographic Breakdown

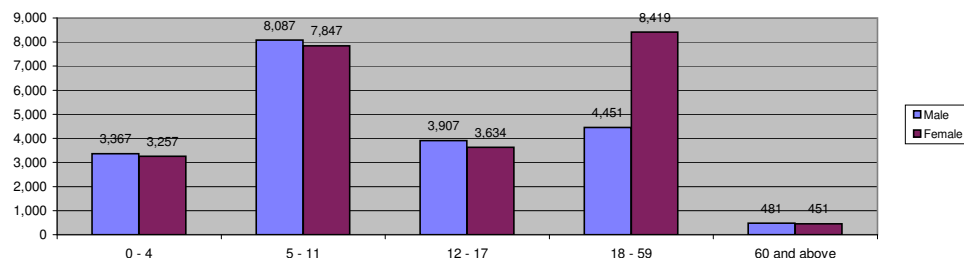
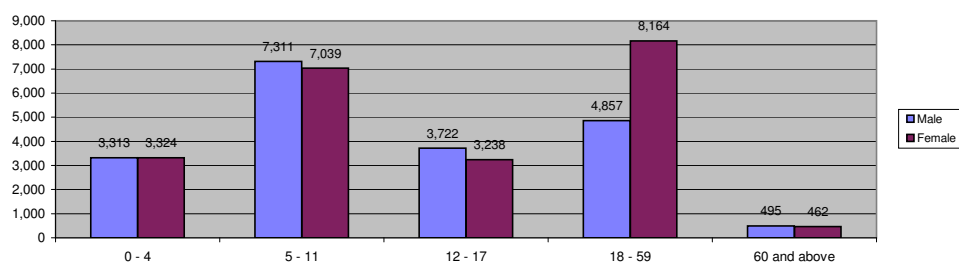


Table 2.3 - Bokolmany Camp Demographic Breakdown

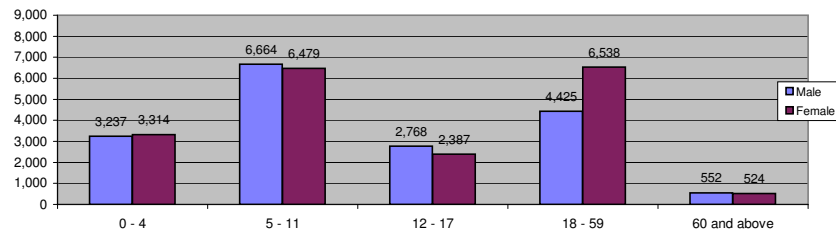
Age Group	Sex				Total	
	Male	( % )	Female	( % )	Total	( % )
0 - 4	3,313	7.9%	3,324	7.9%	6,637	15.8%
5 - 11	7,311	17.4%	7,039	16.8%	14,350	34.2%
12 - 17	3,722	8.9%	3,238	7.7%	6,960	16.6%
18 - 59	4,857	11.6%	8,164	19.5%	13,021	31.1%
60 and above	495	1.2%	462	1.1%	957	2.3%
<b>Bokolmanyol Total</b>	<b>19,698</b>	<b>47.0%</b>	<b>22,227</b>	<b>53.0%</b>	<b>41,925</b>	<b>100.0%</b>

Figure 2.3 - Bokolmany Camp Demographic Breakdown



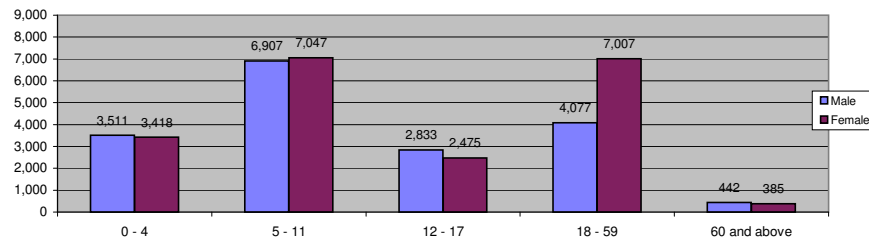
Age Group	Sex				Total	
	Male	( % )	Female	( % )	Total	( % )
0 - 4	3,237	8.8%	3,314	9.0%	6,551	17.8%
5 - 11	6,664	18.1%	6,479	17.6%	13,143	35.6%
12 - 17	2,768	7.5%	2,387	6.5%	5,155	14.0%
18 - 59	4,425	12.0%	6,538	17.7%	10,963	29.7%
60 and above	552	1.5%	524	1.4%	1,076	2.9%
<b>Kobe Total</b>	<b>17,646</b>	<b>47.8%</b>	<b>19,242</b>	<b>52.2%</b>	<b>36,888</b>	<b>100.0%</b>

Figure 2.4 - Kobe Camp Demographic Breakdown



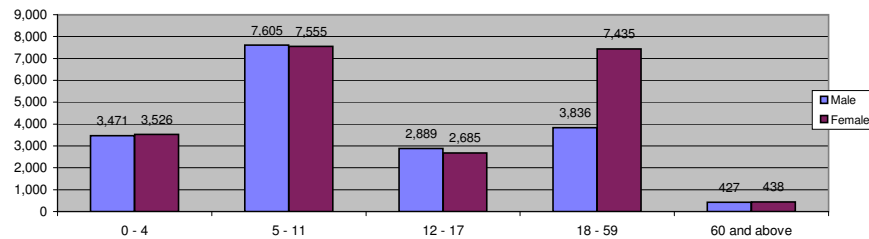
Age Group	Sex				Total	
	Male	( % )	Female	( % )	Total	( % )
0 - 4	3,511	9.2%	3,418	9.0%	6,929	18.2%
5 - 11	6,907	18.1%	7,047	18.5%	13,954	36.6%
12 - 17	2,833	7.4%	2,475	6.5%	5,308	13.9%
18 - 59	4,077	10.7%	7,007	18.4%	11,084	29.1%
60 and above	442	1.2%	385	1.0%	827	2.2%
<b>Hilaweyn Total</b>	<b>17,770</b>	<b>46.6%</b>	<b>20,332</b>	<b>53.4%</b>	<b>38,102</b>	<b>100.0%</b>

Figure 2.5 - Hilaweyn Camp Demographic Breakdown



Age Group	Sex				Total	
	Male	( % )	Female	( % )	Total	( % )
0 - 4	3,471	8.7%	3,526	8.8%	6,997	17.6%
5 - 11	7,605	19.1%	7,555	19.0%	15,160	38.0%
12 - 17	2,889	7.2%	2,685	6.7%	5,574	14.0%
18 - 59	3,836	9.6%	7,435	18.6%	11,271	28.3%
60 and above	427	1.1%	438	1.1%	865	2.2%
<b>Buramino Total</b>	<b>18,228</b>	<b>45.7%</b>	<b>21,639</b>	<b>54.3%</b>	<b>39,867</b>	<b>100.0%</b>

Figure 2.6 - Buramino Camp Demographic Breakdown



## Camp Population change during the Month

As of 31 March 2014

Table 3.1 - Population Changes

		Increase						Decrease									
	Population at the Beginning of Month	New Arrival / In Situ Reg *	Newborns	Transfers in from Other Camps **	Reactivated	Other	Total Increase	Deaths	Resettlement	Transfer out to Other Camps	Organized Repatriation	VRF Assisted Self Repatriation	Confirmed Spontaneous Repatriation	Other Inactivation	Total Decrease	Population at the End of Month	
Camp																	
Bokolmanyu	41,830	14	163	59	4	-	240	-	-	145	-	-	-	-	145	41,925	
Melkadida	43,815	2	76	40	7	-	125	2	-	35	-	-	-	2	39	43,901	
Kobe	36,760	61	54	53	7	-	175	-	-	47	-	-	-	-	47	36,888	
Hilaweyen	37,947	103	68	86	2	-	259	1	-	27	-	-	-	76	104	38,102	
Buramino	40,191	69	56	12	2		139	1	-	33	-	-	-	429	463	39,867	
Total	200,543	249	417	250	22	-	938	4	-	287	-	-	-	507	798	200,683	

\* All new arrivals are registered at the Reception Centre after which they are relocated to the camps

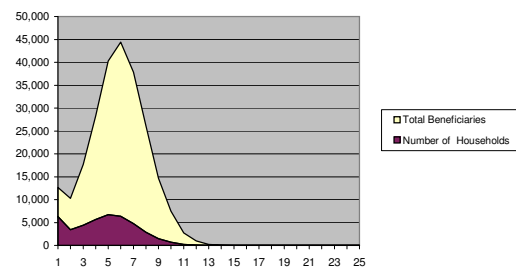
\*\* Mainly due to family re-unification

## Camp Population Composition

As of 31 March 2014

Family Size	Number of Households	Total Beneficiaries
1	6,322	6,322
2	3,417	6,834
3	4,422	13,266
4	5,660	22,640
5	6,716	33,580
6	6,343	38,058
7	4,732	33,124
8	2,896	23,168
9	1,469	13,221
10	680	6,800
11	230	2,530
12	73	876
13	16	208
14	4	56
15		
16		
17		
18		
19		
20		
21		
22		
23		
24		
25		
<b>Total</b>	<b>42,980</b>	<b>200,683</b>

Figure 4.1- ALL CAMPS Household Size



Family Size	Number of Households	Total Beneficiaries
1	990	990
2	652	1,304
3	922	2,766
4	1,168	4,672
5	1,398	6,990
6	1,393	8,358
7	1,064	7,448
8	636	5,088
9	370	3,330
10	183	1,830
11	61	671
12	28	336
13	8	104
14	1	14
15		
16		
17		
18		
19		
20		
21		
22		
23		
24		
25		
<b>Total</b>	<b>8,874</b>	<b>43,901</b>

Figure 4.2- Melkadida Camp Household Size

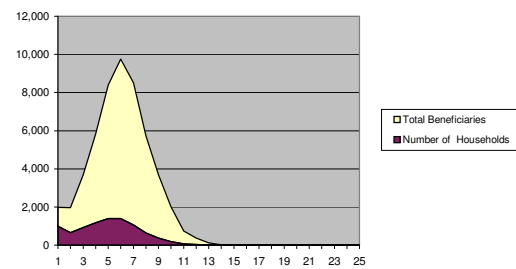


Table 4.3 - Bokolmanyo Camp Household Size		
Family Size	Number of Households	Total Beneficiaries
1	1,642	1,642
2	909	1,818
3	961	2,883
4	1,176	4,704
5	1,286	6,430
6	1,211	7,266
7	964	6,748
8	603	4,824
9	315	2,835
10	162	1,620
11	78	858
12	17	204
13	5	65
14	2	28
15		
16		
17		
18		
19		
20		
21		
22		
23		
24		
25		
Total	9,331	41,925

Figure 4.3- Bokolmanyo Camp Household Size

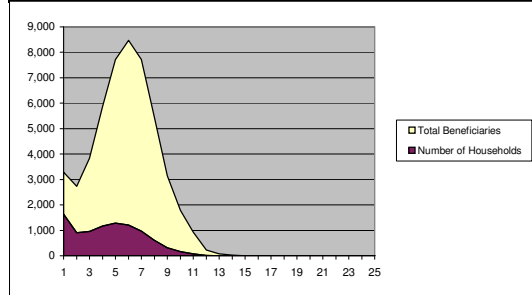


Table 4.4 - Kobe Camp Household Size		
Family Size	Number of Households	Total Beneficiaries
1	1,437	1,437
2	602	1,204
3	843	2,529
4	983	3,932
5	1,179	5,895
6	1,163	6,978
7	910	6,370
8	550	4,400
9	272	2,448
10	119	1,190
11	35	385
12	10	120
13		
14		
15		
16		
17		
18		
19		
20		
21		
22		
23		
24		
25		
Total	8,103	36,888

Figure 4.4- Kobe Camp Household Size

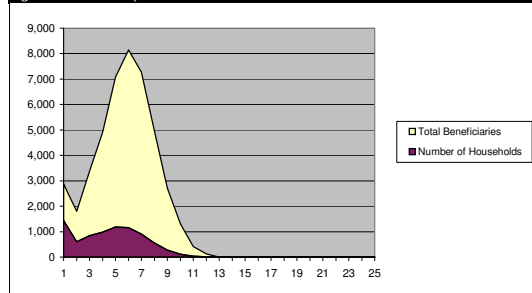


Table 4.5 - Hilaweyn Camp Household Size		
Family Size	Number of Households	Total Beneficiaries
1	1,119	1,119
2	633	1,266
3	775	2,325
4	1,075	4,300
5	1,294	6,470
6	1,265	7,590
7	904	6,328
8	575	4,600
9	282	2,538
10	115	1,150
11	29	319
12	7	84
13	1	13
14		
15		
16		
17		
18		
19		
20		
21		
22		
23		
24		
25		
Total	8,074	38,102

Figure 4.5- Hilaweyn Camp Household Size

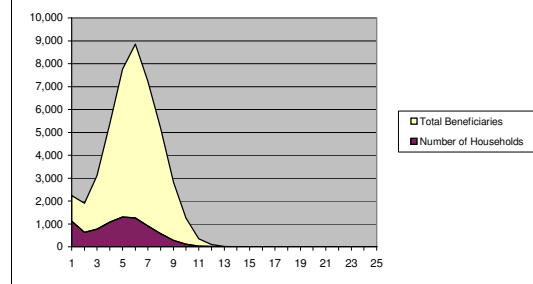
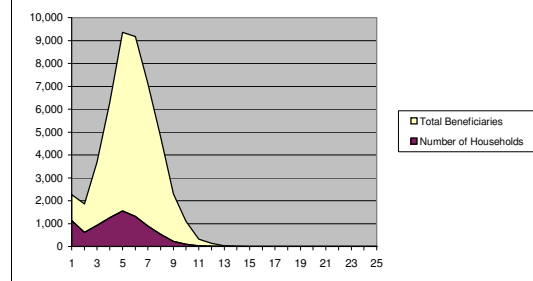


Table 4.6 - Buramino Camp Household Size		
Family Size	Number of Households	Total Beneficiaries
1	1,134	1,134
2	621	1,242
3	921	2,763
4	1,258	5,032
5	1,559	7,795
6	1,311	7,866
7	890	6,230
8	532	4,256
9	230	2,070
10	101	1,010
11	27	297
12	11	132
13	2	26
14	1	14
15		
16		
17		
18		
19		
20		
21		
22		
23		
24		
25		
Total	8,598	39,867

Figure 4.6- Buramino Camp Household Size





## Specific Needs Among Camp Populations

As of 31 March 2014

Table 5.1- ALL CAMPS Specific Needs

Specific Need Type	Sex		Total
	Male	Female	
Child/adolescent at risk*	177	553	730
Woman at risk**		12,832	12,832
Serious medical Condition	1,094	1,641	2,735
Legal Protection needs	19	524	543
Single Parent	885	16,755	17,640
Persons with disabilities	1,589	1,677	3,266
Unaccompanied minor/Separated child	3,621	3,949	7,570
Older person at risk	1,267	1,929	3,196
<b>Total ALL CAMPS</b>	<b>8,652</b>	<b>39,860</b>	<b>48,512</b>

\* Excludes data for Children at risk of not attending school - data pending verification

\*\* Excludes data for lactating mothers

Figure 5.1 - ALL CAMPS Specific Needs

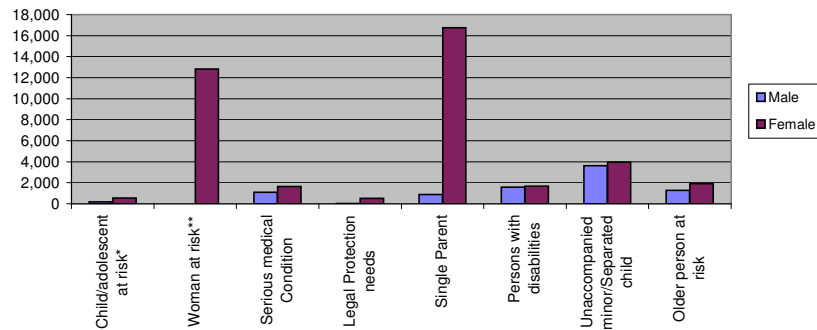


Table 5.2- Melkadida Camp Specific Needs

Specific Need Type	Sex		Total
	Male	Female	
Child/adolescent at risk*	68	177	245
Woman at risk**		4,399	4,399
Serious medical Condition	278	477	755
Legal Protection needs	7	346	353
Single Parent	216	4,231	4,447
Persons with disabilities	419	503	922
Unaccompanied minor/Separated child	1,144	1,268	2,412
Older person at risk	289	399	688
<b>Melkadida Total</b>	<b>2,421</b>	<b>11,800</b>	<b>14,221</b>

Figure 5.2 - Melkadida Camp Specific Needs

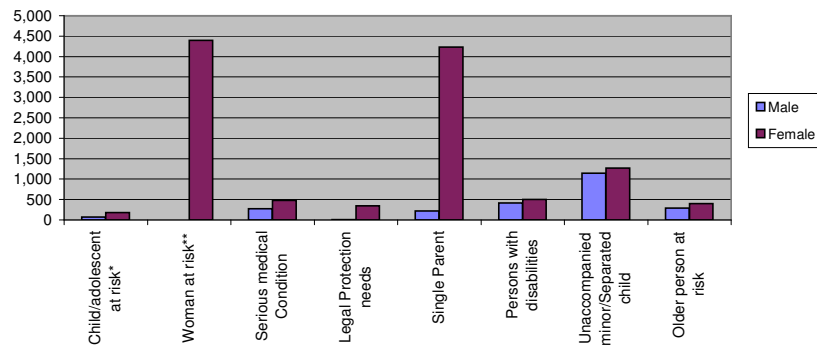


Table 5.3- Bokolmanyo Camp Specific Needs			
Specific Need Type	Sex		Total
	Male	Female	
Child/adolescent at risk*	53	134	187
Woman at risk**		4,152	4,152
Serious medical Condition	275	505	780
Legal Protection needs	10	124	134
Single Parent	202	3,733	3,935
Persons with disabilities	579	509	1,088
Unaccompanied minor/Separated child	983	1,065	2,048
Older person at risk	306	415	721
<b>Bokomanyo! Total</b>	<b>2,408</b>	<b>10,637</b>	<b>13,045</b>

Figure 5.3 - Bokolmanyo Camp Specific Needs

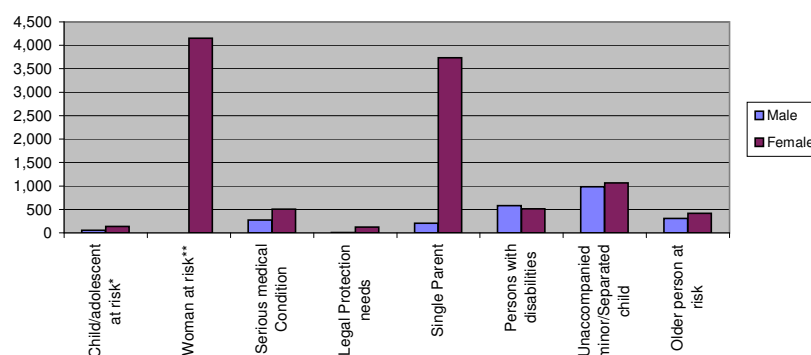


Table 5.4- Kobe Camp Specific Needs			
Specific Need Type	Sex		Total
	Male	Female	
Child/adolescent at risk*	28	98	126
Woman at risk**		1,731	1,731
Serious medical Condition	263	294	557
Legal Protection needs	1	35	36
Single Parent	156	2,342	2,498
Persons with disabilities	211	246	457
Unaccompanied minor/Separated child	697	711	1,408
Older person at risk	247	436	683
<b>Kobe Total</b>	<b>1,603</b>	<b>5,893</b>	<b>7,496</b>

Figure 5.5 - Kobe Camp Specific Needs

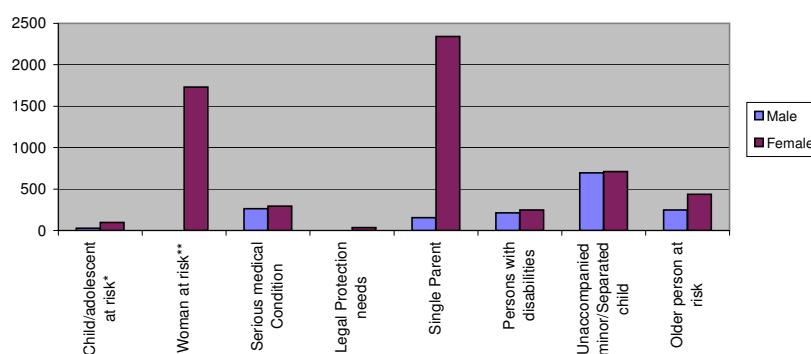


Table 5.6- Hilaweyn Camp Specific Needs

Specific Need Type	Sex		Total
	Male	Female	
Child/adolescent at risk*	24	67	91
Woman at risk**		2,074	2,074
Serious medical Condition	159	193	352
Legal Protection needs	1	17	18
Single Parent	170	3,131	3,301
Persons with disabilities	228	283	511
Unaccompanied minor/Separated child	614	723	1,337
Older person at risk	233	348	581
<b>Hilaweyn Total</b>	<b>1,429</b>	<b>6,836</b>	<b>8,265</b>

Figure 5.6 - Hilaweyn Camp Population Increase

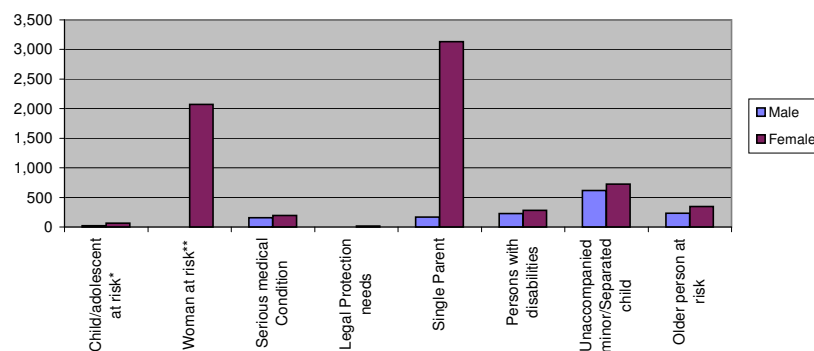
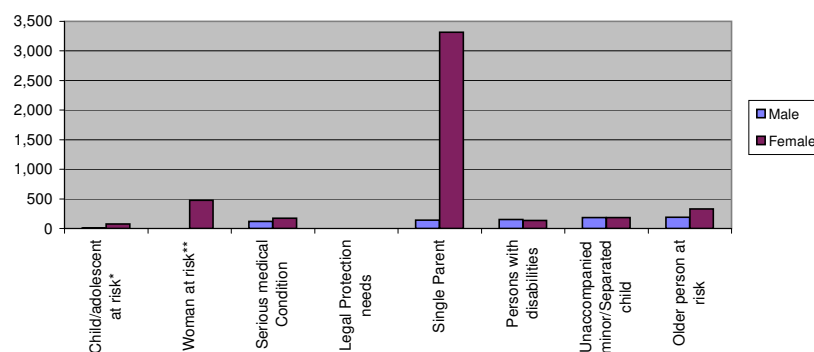


Table 5.7- Buramino Camp Specific Needs

Specific Need Type	Sex		Total
	Male	Female	
Child/adolescent at risk*	4	77	81
Woman at risk**		476	476
Serious medical Condition	119	172	291
Legal Protection needs		2	2
Single Parent	141	3,318	3,459
Persons with disabilities	152	136	288
Unaccompanied minor/Separated child	183	182	365
Older person at risk	192	331	523
<b>Buramino Total</b>	<b>791</b>	<b>4,694</b>	<b>5,485</b>

Figure 5.7 - Buramino Camp Population Increase



## Places of Origin

As of 31 March 2014

Table 7.1- ALL CAMPS Places of Origin

Area of Origin	Sex		Total
	Male	Female	
Gedo	47,712	58,636	106,348
Badadir	2,790	3,348	6,138
Bay	28,281	28,067	56,348
Bakol	10,568	12,288	22,856
Lower Shabelle	402	446	848
Lower Juba	289	306	595
Galgadud	83	76	159
Middle Shabelle	81	75	156
Hiran	376	403	779
Other	3,053	3,403	6,456
<b>ALL CAMPS Total</b>	<b>93,635</b>	<b>107,048</b>	<b>200,683</b>

Figure 7.1 - ALL CAMPS Places of Origin

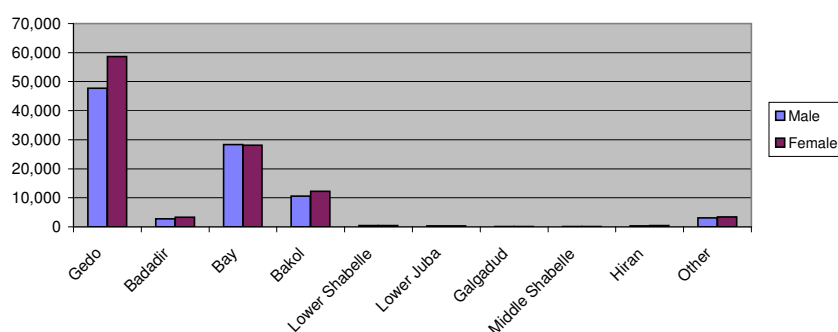


Table 7.2- Melkadida Camp Places of Origin

Area of Origin	Sex		Total
	Male	Female	
Gedo	12,903	15,774	28,677
Badadir	641	817	1,458
Bay	4,324	4,218	8,542
Bakol	1,575	1,899	3,474
Lower Shabelle	89	97	186
Lower Juba	56	52	108
Galgadud	18	21	39
Middle Shabelle	23	20	43
Hiran	84	84	168
Other	580	626	1,206
<b>Melkadida Total</b>	<b>20,293</b>	<b>23,608</b>	<b>43,901</b>

Figure 7.2 - Melkadida Camp Places of Origin

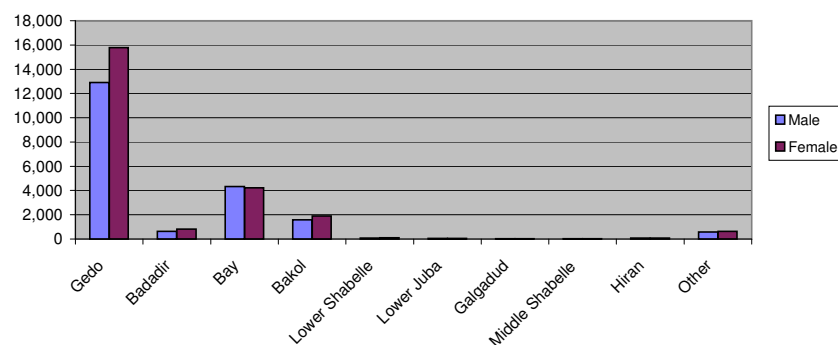


Table 7.3- Bokolmany Camp Places of Origin			
Area of Origin	Sex		Total
	Male	Female	
Gedo	10,709	13,047	23,756
Badadir	1,506	1,706	3,212
Bay	4,908	4,776	9,684
Bakol	1,377	1,461	2,838
Lower Shabelle	113	120	233
Lower Juba	137	129	266
Galgadud	37	27	64
Middle Shabelle	20	15	35
Hiran	88	97	185
Other	803	849	1,652
<b>Bokomanyol Total</b>	<b>19,698</b>	<b>22,227</b>	<b>41,925</b>

Figure 7.3 - Bokolmany Camp Places of Origin

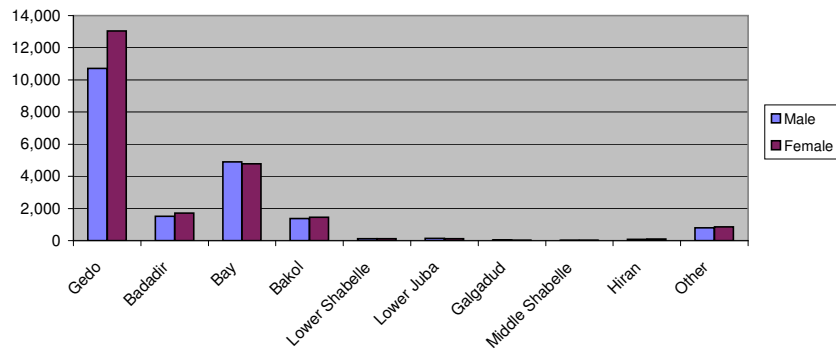


Table 7.4- Kobe Camp Places of Origin			
Area of Origin	Sex		Total
	Male	Female	
Gedo	4,967	6,077	11,044
Badadir	62	83	145
Bay	9,532	9,663	19,195
Bakol	2,215	2,482	4,697
Lower Shabelle	24	14	38
Lower Juba	25	43	68
Galgadud	7	2	9
Middle Shabelle	16	20	36
Hiran	17	20	37
Other	781	838	1,619
<b>Kobe Total</b>	<b>17,646</b>	<b>19,242</b>	<b>36,888</b>

Figure 7.5 - Kobe Camp Places of Origin

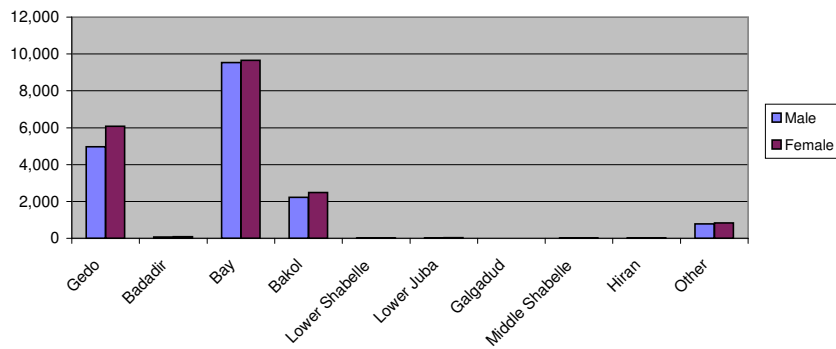


Table 7.6- Hilaweyn Camp Places of Origin			
Area of Origin	Sex		Total
	Male	Female	
Gedo	8,179	10,322	18,501
Badadir	185	249	434
Bay	5,759	5,690	11,449
Bakol	2,990	3,273	6,263
Lower Shabelle	39	29	68
Lower Juba	15	27	42
Galgadud	5	15	20
Middle Shabelle	1		1
Hiran	44	57	101
Other	553	670	1,223
<b>Hilaweyn Total</b>	<b>17,770</b>	<b>20,332</b>	<b>38,102</b>

Figure 7.6 - Hilaweyn Camp Places of Origin

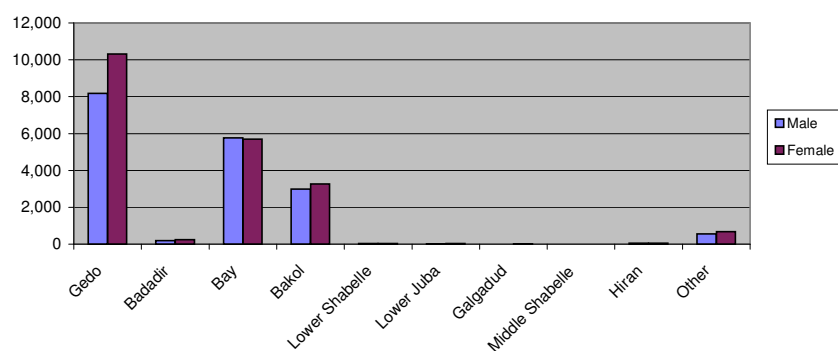
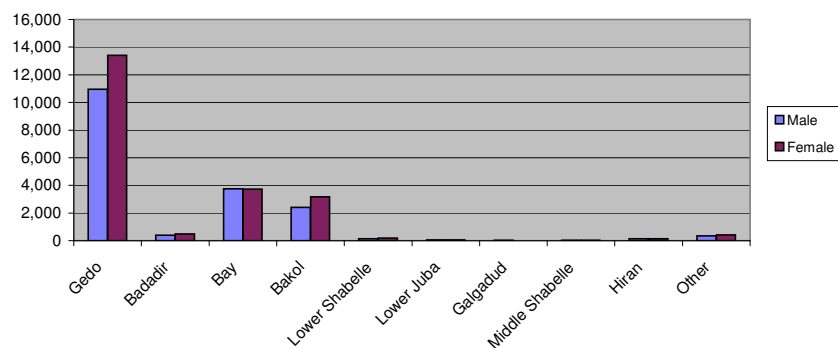


Table 7.7- Buramino Camp Places of Origin			
Area of Origin	Sex		Total
	Male	Female	
Gedo	10,954	13,416	24,370
Badadir	396	493	889
Bay	3,758	3,720	7,478
Bakol	2,411	3,173	5,584
Lower Shabelle	137	186	323
Lower Juba	56	55	111
Galgadud	16	11	27
Middle Shabelle	21	20	41
Hiran	143	145	288
Other	336	420	756
<b>Buramino Total</b>	<b>18,228</b>	<b>21,639</b>	<b>39,867</b>

Figure 7.7 - Buramino Camp Places of Origin



## Ethnic Breakdown

As of 31 March 2014

Table 6.1- ALL CAMPS Ethnic Breakdown

Ethnicity	Sex		Total
	Male	Female	
Rahan-weyn	55,279	59,988	115,267
Marehan	19,098	24,203	43,301
Hawiye	8,038	9,622	17,660
Dir	2,537	3,090	5,627
Bantu	909	1,113	2,022
Ashraf	1,263	1,324	2,587
Shekal	1,189	1,418	2,607
Darod	1,444	1,614	3,058
Minorities/Others	3,878	4,676	8,554
<b>ALL CAMPS Total</b>	<b>93,635</b>	<b>107,048</b>	<b>200,683</b>

Figure 6.1 - ALL CAMPS Ethnic Breakdown

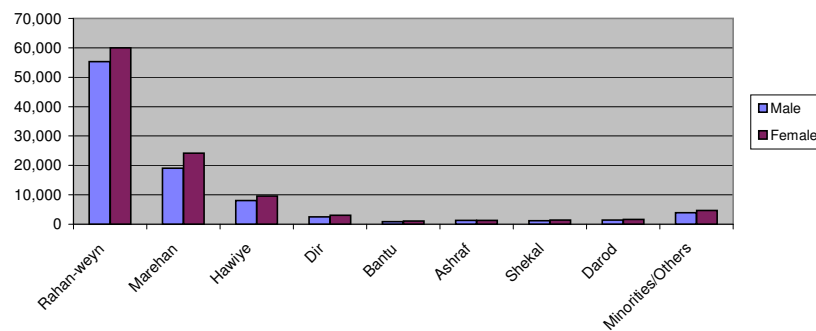
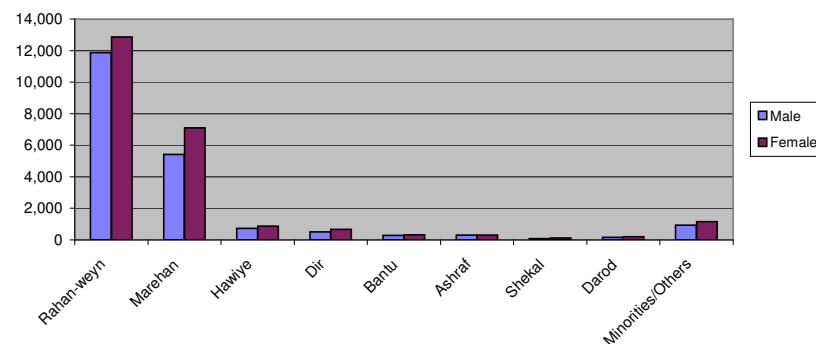


Table 6.2- Melkadida Camp Ethnic Breakdown

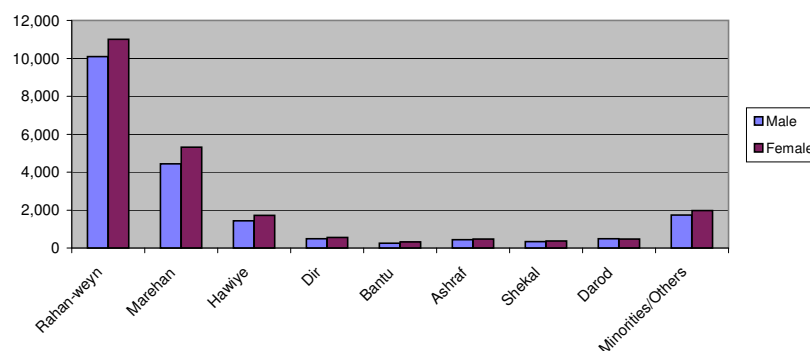
Ethnicity	Sex		Total
	Male	Female	
Rahan-weyn	11,861	12,858	24,719
Marehan	5,414	7,102	12,516
Hawiye	724	871	1,595
Dir	511	664	1,175
Bantu	284	315	599
Ashraf	313	310	623
Shekal	90	127	217
Darod	158	198	356
Minorities/Others	938	1,163	2,101
<b>Melkadida Total</b>	<b>20,293</b>	<b>23,608</b>	<b>43,901</b>

Figure 6.2 - Melkadida Camp Ethnic Breakdown



Ethnicity	Sex		Total
	Male	Female	
Rahan-weyn	10,089	11,009	21,098
Marehan	4,432	5,315	9,747
Hawiye	1,432	1,726	3,158
Dir	483	559	1,042
Bantu	251	320	571
Ashraf	445	481	926
Shekal	342	374	716
Darod	489	475	964
Minorities/Others	1,735	1,968	3,703
<b>Bokomanyol Total</b>	<b>19,698</b>	<b>22,227</b>	<b>41,925</b>

Figure 6.3 - Bokolmanyo Camp Ethnic Breakdown



Ethnicity	Sex		Total
	Male	Female	
Rahan-weyn	13,658	14,325	27,983
Marehan	2,030	2,518	4,548
Hawiye	790	945	1,735
Dir	140	186	326
Bantu	76	94	170
Ashraf	60	79	139
Shekal	146	212	358
Darod	426	501	927
Minorities/Others	320	382	702
<b>Kobe Total</b>	<b>17,646</b>	<b>19,242</b>	<b>36,888</b>

Figure 6.5 - Kobe Camp Ethnic Breakdown

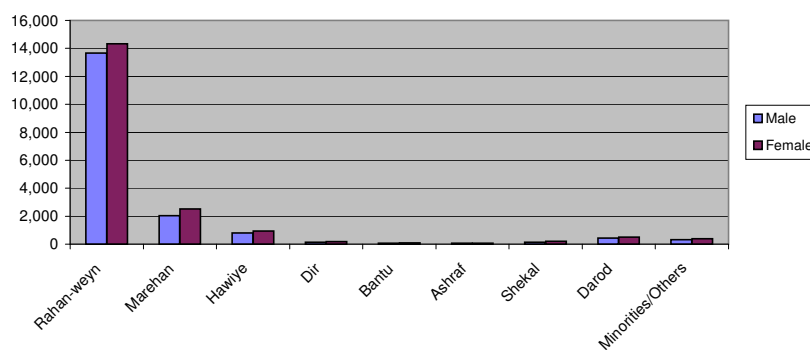




Table 6.6- Hilaweyn Camp Ethnic Breakdown			
Ethnicity	Sex		Total
	Male	Female	
Rahan-weyn	11,174	11,943	23,117
Marehan	3,628	4,652	8,280
Hawiye	1,571	2,026	3,597
Dir	419	500	919
Bantu	116	161	277
Ashraf	160	177	337
Shekal	183	217	400
Darod	201	220	421
Minorities/Others	318	436	754
<b>Hilaweyn Total</b>	<b>17,770</b>	<b>20,332</b>	<b>38,102</b>

Figure 6.6 - Hilaweyn Camp Ethnic Breakdown

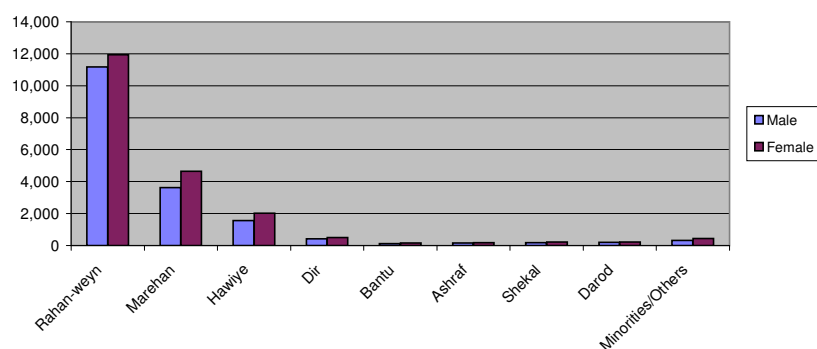


Table 6.7- Buramino Camp Ethnic Breakdown			
Ethnicity	Sex		Total
	Male	Female	
Rahan-weyn	8,497	9,853	18,350
Marehan	3,594	4,616	8,210
Hawiye	3,521	4,054	7,575
Dir	984	1,181	2,165
Bantu	182	223	405
Ashraf	285	277	562
Shekal	428	488	916
Darod	170	220	390
Minorities/Others	567	727	1,294
<b>Buramino Total</b>	<b>18,228</b>	<b>21,639</b>	<b>39,867</b>

Figure 6.7 - Buramino Camp Ethnic Breakdown

