



CENTRAL AFRICAN REPUBLIC FOOD SECURITY CLUSTER

Strengthening Humanitarian Response

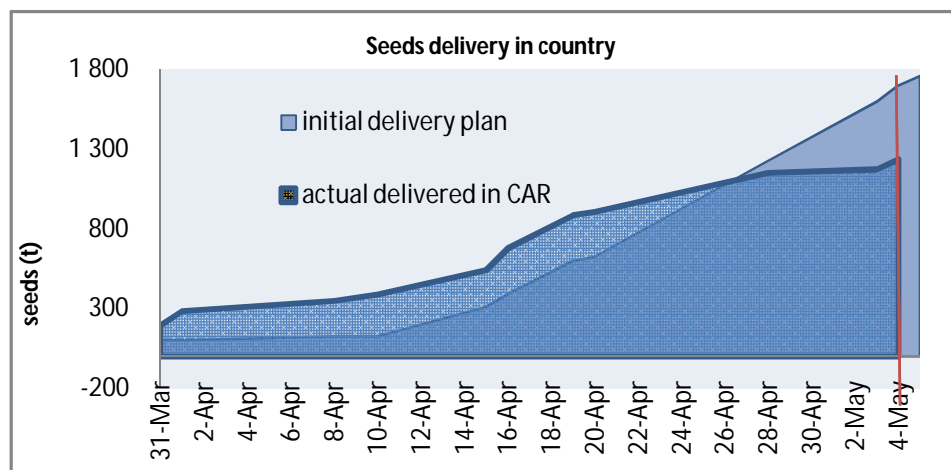
Summary of the April May seeds and tools distribution Operation - 5 may 2014 -

WFP - In April, 83% of deliveries from Bangui were sent to the provinces. WFP is also setting up staging areas and deploying mobile storage capacity; two were deployed to Ndélé and Bria in April.

FAO - More than 67% of the seeds and tools have been delivered within the country and are being positioned in the affected areas for distribution. As planned, distribution started the third week of April and 3 500 households have already received assistance. Due to a severe increase in insecurity in FAO's partners distribution areas, delivery will last until end of May.

- **Seeds delivered:** 70 % of procured seeds have been delivered in FAO Hubs in CAR ; the remaining quantities will be transported to the border in the forthcoming week.
- **Households assisted:** distribution started in Bozoum and Bossangoa one week ago with 2 NGOs (CORDAID and CRS). Delivery will accelerate as additional NGOs will also start distributions next week.

FAO	HHs	Seeds (MT)	Tools
Cluster Objective	250 000		
FAO Objective	150 000		
Funded for Agriculture Season	76 000	1 797	150 000
Delivered FAO	48 160	1 236	110 000
Distributed FAO	8 300	207	16 560
WFP Seeds protection			
Beneficiaries Reached			200 000
Delivered WFP			3 844 (MT)
Distributed WFP			2 280 (MT)





CENTRAL AFRICAN REPUBLIC FOOD SECURITY CLUSTER

Strengthening Humanitarian Response

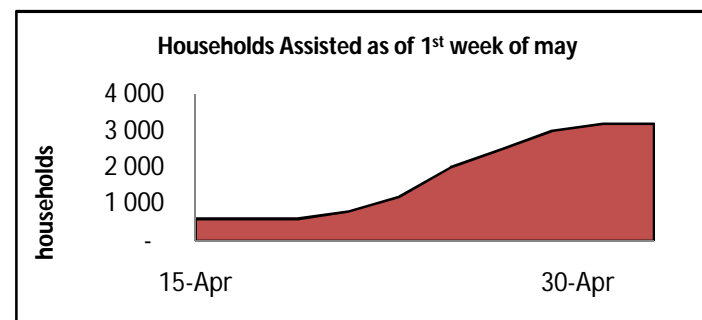
Constraints

This week a number of attacks by armed groups targeted UN and NGOs vehicles and staff. The deteriorating security situation impacts heavily on the speed of transportation of inputs to FAO's distribution hubs as well as on partners' distributions in general;

- Armed groups attacked 2 convoys of FAO's partners (CORDAID and PU-AMI). As a result of the attacks, three contractors' drivers were killed on the road from Bangui to Sibut on 1st May and several tons of seeds were looted;
- Localized heavy rains and deteriorated roads delay convoys;

Conclusion

- Corrective actions are taken including the local procurement of quality seeds (Paoua, Kaga Bandoro and Bambari) to avoid delays. Convoys on risky axes are being closely monitored and coordinated with MISCA and other UN and partner organizations.
- Distribution is expected to be completed in time for the planting season.



Préfecture	Partner	Families	Distribution starting date
Lobaye	COOPI	1,500	12-May
Lobaye	Tearfund	1,000	19-May
Mambere i Kadei	Première Urgence	3,850	15-May
Nana Gribizi	ECHELLE	1,125	6-May
Nana Gribizi	IRC	3,500	12-May
Nana Mambere	CORDAID/CARITAS	3,630	28-Apr
Ombella Mpoko	World Vision	1,150	19-May
Ombella Mpoko	CADAPI	1,500	19-May
Ombella Mpoko	Croix rouge	1,500	19-May
Ombella Mpoko	AIEC MS	950	19-May
Ouham	CRS/CARITAS	10,000	21-Apr
Ouham	DRC	5,620	12-May
Ouham	SOLIDARITE	4,800	12-May
Ouham Pende	ACTED	2,000	7-May
Ouham Pende	DRC	3,720	9-May
Ouham Pende	CORDAID/CARITAS	3,930	28-Apr
Mbomou	ACTED	2,000	6-May
Bamingi Bangora	Première Urgence	1,500	7-May
Basse Kotto	COHEB	5,000	15-May
Haute Ktto	COOPI	3,350	12-May
Ouaka	Triangle	6,000	19-May
Ouaka	COOPI	2,150	12-May
Vakaga	Triangle	2,500	19-May
country	farmers groups	2,240	9-May
TOTAL		74,515	

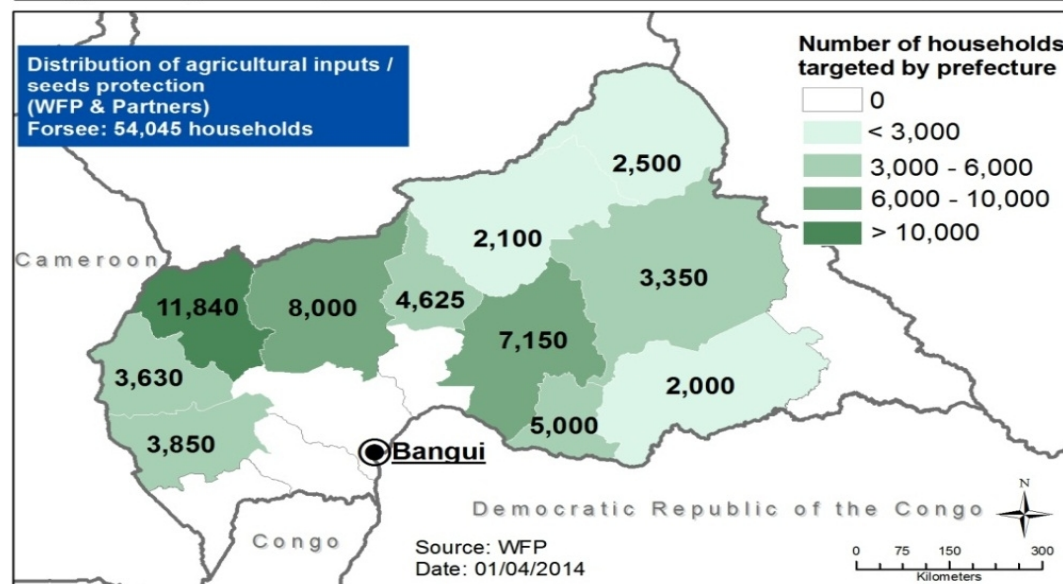
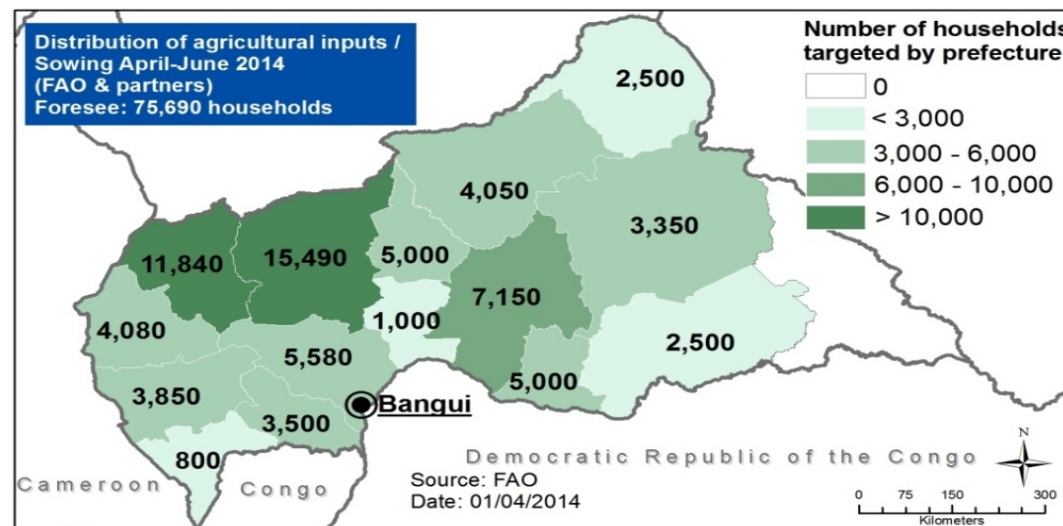


CENTRAL AFRICAN REPUBLIC FOOD SECURITY CLUSTER

Strengthening Humanitarian Response

FAO and WFP joint planning for seeds and tools distribution and seed protection

WFP, FAO and implementing partners are jointly assisting vulnerable population to optimize seeds and tools distribution and avoid seed consumption where needed.



NGOs partners: Acted, Caritas, Coheb, Coopi, Cordaid, CRS, DRC, IRC, PU-AMI, Solidarités, Tearfund, Triangle, World Vision

The difference in the number of households between the two maps is because firstly partnerships are being finalization in some prefectures and secondly some areas do not require seeds protection.



CAR: Implementing partners (April 2014)

