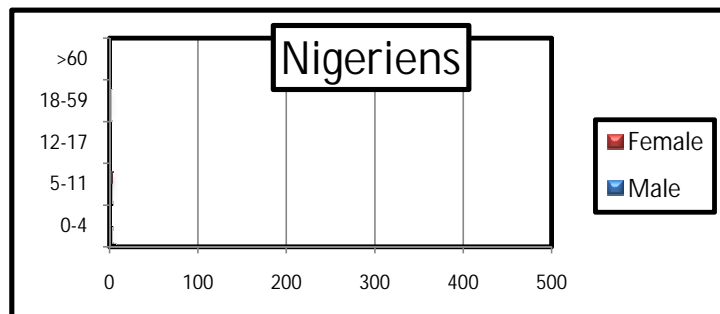
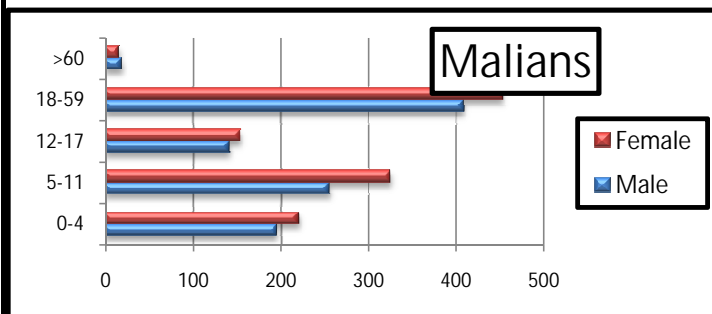


Profile of the registered population

	Level 1 registration					un-registered				
	Malian		Nigerien		Total	Malian		Nigerien		Total
CHINWAREN	435	2186	1	7	436	2193				

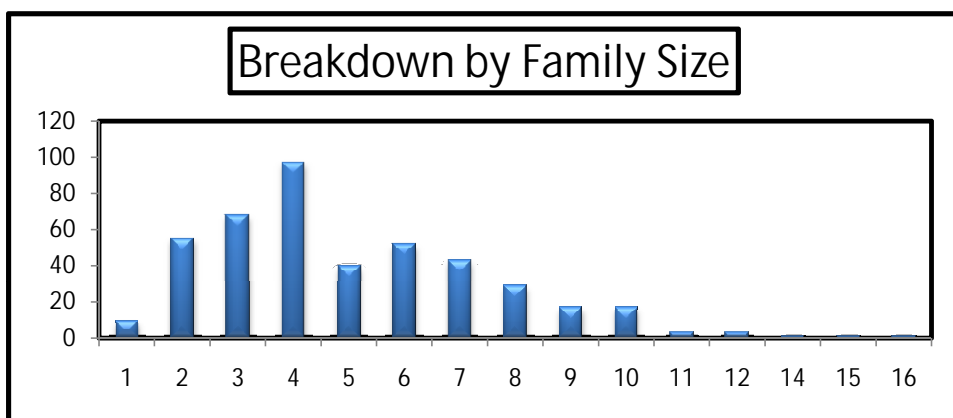
a. Age and gender Breakdown

		Malian					Nigerien				
		0-4	5-11	12-17	18-59	>60	0-4	5-11	12-17	18-59	>60
CHINWAREN	Male	195	255	141	408	19	1	1	0	1	0
	Female	220	325	154	453	16	0	3	0	1	0
	Total	415	580	295	861	35	1	4	0	2	0



b. By family size

Size	Total HH	
1	9	2%
2	55	13%
3	68	16%
4	97	22%
5	40	9%
6	52	12%
7	43	10%
8	29	7%
9	17	4%
10	17	4%
11	3	1%
12	3	1%
14	1	0%
15	1	0%
16	1	0%
Grand Total	436	100%



b. By Place of habitual residence

	Malian HH		Nigerien HH		Grand Total	
ANDERAMBOUKANE	29	7%		0%	29	7%
MENAKA	332	76%	1	100%		0%
TAMALAT	63	14%		0%	63	14%
OTHERS	11	3%		0%	11	3%
Grand Total	435	100%	1	0%	436	17%

