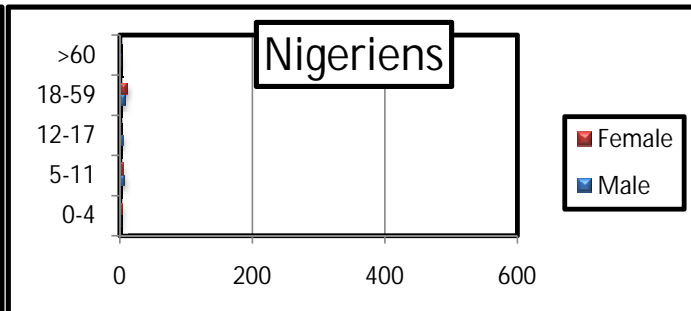
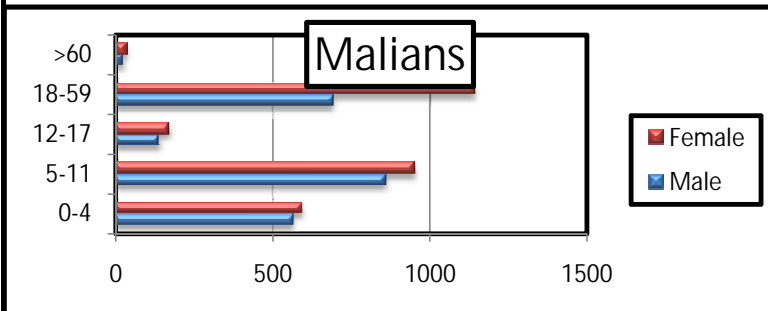


## Profile of the registered population

	Level 1 registration					un-registered				
	Malian		Nigerien		Total	Malian		Nigerien		Total
TABAREYBAREY	1163	5164	12	55	1175	5219				

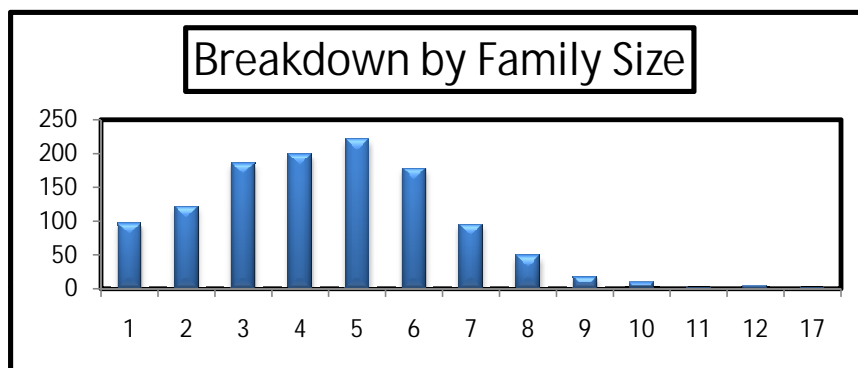
### a. Age and gender Breakdown

		Malian					Nigerien				
		0-4	5-11	12-17	18-59	>60	0-4	5-11	12-17	18-59	>60
TABAREYBAREY	Male	564	859	138	692	23	3	8	6	9	3
	Female	591	950	171	1140	36	5	6	2	12	1
	Total	1155	1809	309	1832	59	8	14	8	21	4



### b. By family size

Size	Total HH	
1	97	8%
2	121	10%
3	185	16%
4	199	17%
5	221	19%
6	178	15%
7	95	8%
8	48	4%
9	17	1%
10	9	1%
11	1	0%
12	3	0%
17	1	0%
Grand Total	1175	100%



### b. By Place of habitual residence

	Malian HH		Nigerien HH		Grand Total	
ANSONGO	402	35%	3	25%	405	34%
FAFA	40	3%	0%	0%	40	3%
GAO	12	1%	0%	0%	12	1%
KAROU	13	1%	0%	0%	13	1%
LABEZANGA	143	12%	0%	0%	143	12%
OUATTAGOUNA	217	19%	2	17%	219	19%
TAMAKAZA	62	5%	7	58%	69	6%
TINAHANA	143	12%	0%	0%	143	12%
OTHERS	131	11%	0%	0%	131	11%
Grand Total	1163	100%	12	100%	1175	100%

