



UNHCR Operation in Niger

Fact Sheet | February 2013

Operational highlights

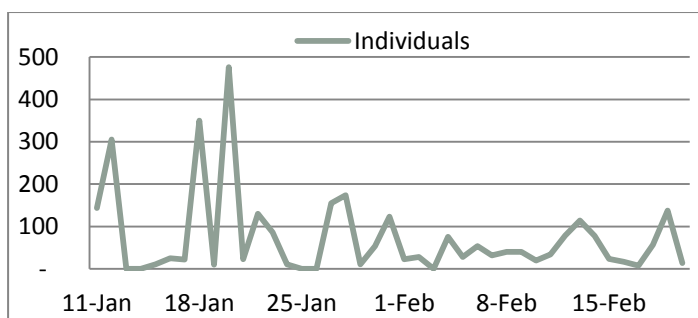
- Niger currently hosts an estimated **50,000** Malian refugees. The crisis has also led to the return of **3,127** nationals of Niger previously living in the Gao area in Mali. Following the recent military intervention by the French and the ECOWAS armies, Malian refugees have continued to cross the border and arrive in Niger. Since the 11th of January **3,014** new arrivals were reported.
- The operation focus on the following areas of action: guarantee **the security and physical integrity**; ensure that all refugees **are duly registered**; secure access to **basic necessities and livelihood**; ensure an **active participation and close involvement of refugees in programmes and activities** that affect their lives; bolster **coordination and cooperation with all other stakeholders**.

Refugees in Country (refugees by country of origin and gender)

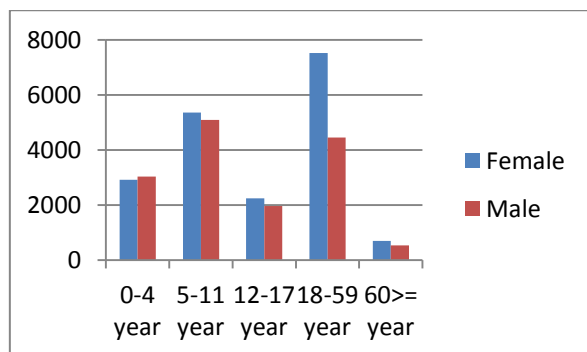
GENDER	Individuals	Households
MALIANS	50,714	10,117
NIGERIANS RETURNÉES	3,127	773
Total	50,000*	11,000*

* UNHCR is providing Population Planning Figures in order to provide means for the Humanitarian communities to plan its activities pending the completion of the countrywide individual registration. This figure is a national estimate.

New arrivals since 11 January 2013 (by individuals)



Individuals by age (year) and gender



Working with partners

UNHCR coordinates humanitarian assistance with various implementation partners:

- Cadev: registration
- Agence d'Aide à la Coopération Technique et au Développement (ACTED) in Abala Camp
- Islamic Relief in Mangaize Camp
- Akaras in Tillia sites
- Commission Nationale d'Eligibilité (CNE) : escorts
- International Organization of Migrations : refugees transportation
- Plan Niger in Tabareybarey camp
- Afrique Secours Assistance (ASA); Personne a besoins spécifiques, Protection des enfants et prévention des SGBV dans les camps

Operational partners are: Oxfam, Red Cross, Medecin Sans Frontieres, Humanitaires Sans Frontieres, WFP, UNICEF, UNFPA, WHO, IOM, Commission Nationale UNESCO

Population by site and location

LOCATION	Camp/Site	TOTAL
AYOROU	Tabareybarey	6,183
	Mbeidoum	591
	Gaoude	324
	Koutougou	35
	Ayorou ville	639
	Total	7,772
ABALA	Camp Abala	11,387
	Kizamou	108
	Miel	1,017
	Tigzefan	1,161
	Total	13,673
OUALLAM	Banibangou	1,158
	Chinegodrar	813
	Mangaize	6,814
	Total	8,297
TILLIA **	Agando	14,427
	Chinwaren	2,560
	Total	16,987
NIAMEY		Total 6,624
Population Planning Figure		50,000

Latest developments

- Relocation:** The relocation of Banibangou site started on 07 February and ended on 13 February. 1741 refugees (425 households) have been transferred and integrated in Mangaize Camp where they received a hot meal, food items for the month and non-food items (blankets, mosquito, kitchen sets, buckets, jerry cans, soap, mats) and completed the medical screening and vaccination. Planning activities are underway with CNE and partners for the relocation of refugees from the sites of Agando and Chinwaren (Tillia) (20 km from the Malian Border), to the new site of Intekane (110 km from the Malian Border). Intekane will be a 600 square kilometers 'refugee hosting area' hence respecting the nomadic character of Tuaregs refugees.
- Shelter:** An extension site of 40 hectares where emergency shelters were built was added to Mangaize Camp: 440 families received each 240m² as areas for their shelters.
- Urban refugees:** On 28 January a meeting was held with all UNHCR partners to design a common strategy for urban refugees. It was agreed that the best approach would be the implementation of a 'one stop shop' in Niamey to facilitate the protection and assistance response toward urban refugees
- Health/Nutrition:** WFP, Unicef and UNHCR have agreed to extend the wet feeding programme for an additional two months period (up until May 2013). This support, complementary to food rations provided to all refugees, targeted 5 963 refugees through the month of February. The results of the MUAC survey among 6-59 months children are encouraging and show a positive effect of wet feeding activities.
- Food:** A joint WFP-UNHCR Cash Voucher programme is currently being discussed between the two agencies and a pilot project in Mangaize camp will be launched at the end of March 2013.
- Environment:** A pilot study conducted to determine the best source of energy for refugees in Niger started in February in the camps of Mangaize, Abala and Tabareybarey. Fuel, mineral coal and charcoal will hence be tested by 30 households in each camp.

UNHCR Niger major donors in 2012

Earmarked Contributions (Niger)

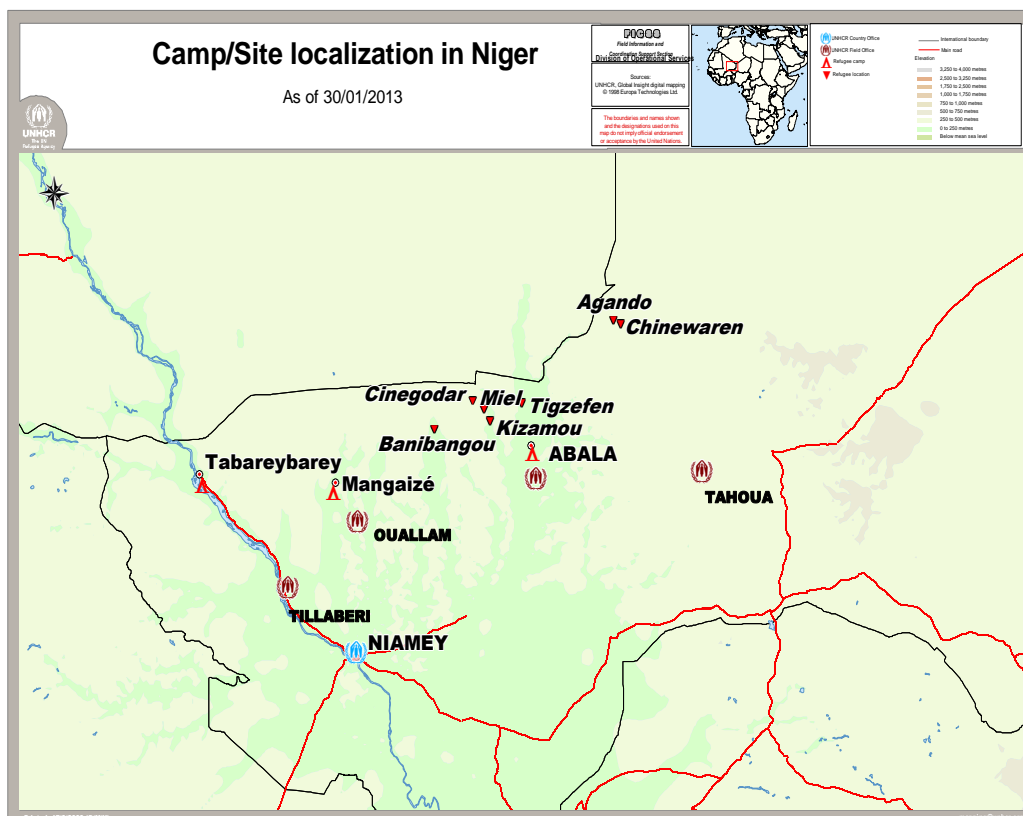
Central Emergency Response Fund (CERF)

Mali situation donors

Austria, Canada, Denmark, European Commission, France, Germany, Ireland, Japan, Luxembourg, Netherlands, Norway, Spain, Sweden, United States of America.

UNHCR operation in Niger in 2012 (in million USD)

	BUDGET
Total Budget CNA	51,463,997



UNHCR staff

Staff comprise: 51 national staff, 26 international staff, including 3 United Nations Volunteers.

For further details please contact:

UNHCR office Niger

Ms. Arnaud Charlotte

Email: arnaud@unhcr.org

Associate Public Information Officer

Phone: +227 92 19 19 03

Webportal address :

<http://data.unhcr.org/MaliSituation/country.php?id=157>