

# INTER-AGENCY REGIONAL RESPONSE FOR SYRIAN REFUGEES

Egypt, Iraq, Jordan, Lebanon, Turkey

9 - 15 May 2013



This update provides a snapshot of the inter-agency regional humanitarian response in full coordination with host Governments and 65 partners across the region. Published weekly on Thursday, the next update will be available on 23 May 2013.

## REGIONAL HIGHLIGHTS

- **1.5 million refugees** are placing unprecedented strain on communities, infrastructure and services in host countries. Humanitarian actors are focused on alleviating the burden on host Governments and mitigating tensions between refugee and local communities.
- UNHCR High Commissioner Guterres expressed his deep condolences to the Turkish State and to all Turkish people for the extensive loss of life and injuries suffered as a result of the explosions in Reyhanli, Turkey on 11 May 2013. The terrorist acts targeted both the Turkish people and Syrian refugees who have received protection in Turkey.
- Three-quarters of refugees are living in urban and rural communities amongst host populations. Response partners are planning for the expansion of cash-based interventions to fulfill multi-sectoral needs and address challenges including limited access to livelihoods and increasing costs of living.
- Some 350,000 refugees are living in 21 refugee camps across Turkey (17), Jordan (two camps plus an additional two transit sites) and Iraq (two). Congestion is a major issue and new camps are under construction in all three countries to accommodate new arrivals.

## IN THIS ISSUE

- Six new camps under construction in Iraq, Jordan and Turkey, p.2
- Alternative shelter solutions in Lebanon, p.2
- Building capacity in SGBV prevention, response, p.3
- Assistance for cases of child and forced marriages and SGBV survivors, p.3
- Women and girls find sanctuary in safe spaces, p.3
- Registration scale-up continues, p.4
- Insecurity in Zaatari affecting service delivery, p.4

## REGIONAL FIGURES

**1,511,976** refugees fleeing Syria have sought protection in neighboring countries

**840,000** Syrian refugees have been registered and an estimated **1 million** people have fled Syria in 2013 alone

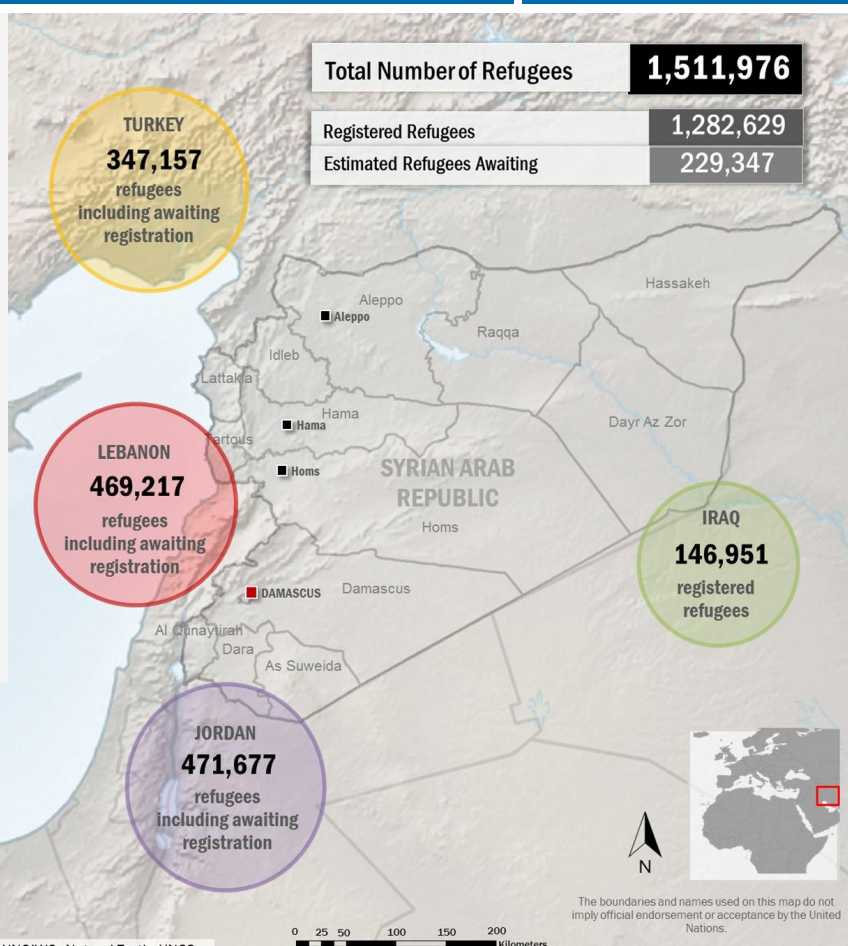
**51%** of registered refugees are children

**254,929** refugees have benefitted from Save the Children activities in Jordan, Lebanon and Iraq

**76%** of refugees are living outside camps amongst host communities

**2,026** vulnerable families supported by Handicap International interventions in Lebanon

**291,281** refugees transported to assistance by IOM in Jordan



Sources UNHCR Regional Datawarehouse, Common Operational Dataset (COD), UNGIWG, Natural Earth, UNCS

Refugee population as of 16 May 2013, based on available data. For updated figures, please visit <http://data.unhcr.org/syrianrefugees>

## New camp in northern Iraq to address severe overcrowding

- Iraq - There is a critical lack of shelter in the Kurdistan region, where over 95 per cent of the Syrian refugee population in Iraq are living. Domiz camp is currently the only operational camp in the region and is home to some 40,000 people, greatly exceeding its capacity of 20,000.
- UNHCR and the Kurdistan authorities began construction works for a new Syrian refugee camp in the governorate of Erbil on 21 April. Dara Shakran will accommodate up to 12,000, with the potential for further expansion. Site preparations are progressing well and the site clearing, ground leveling and demarcation of internal roads are complete. In coordination with the Erbil Department of Water, response partners are working on a potable water system and sewage network, and are in the process of establishing disposal areas for wastewater. Basic services and infrastructure, including a school, health care centre and market areas are scheduled to be complete in June.

## Third camp in Jordan under construction, potential to host 130,000 people

- Jordan - Works on a third camp with an initial capacity to host 60,000 refugees are underway in Azraq. The new camp is expected to be operational by early June and could expand to accommodate 130,000 people by the end of 2013. The Central Emergency Response Fund (CERF) is contributing US\$ 4,900,000 towards the provision of non-food items (NFIs) and shelter for new refugee families in Azraq. UNHCR and implementing partner Norwegian Refugee Council (NRC) will be setting up distribution points and warehouse capacity to facilitate the distribution of NFIs. In addition, the CERF has allocated a further US\$ 4,900,000 to UNICEF to provide emergency WASH assistance and infrastructure in the new camp.

## Alternative shelter solutions to battle high rental costs in Lebanon

- Lebanon - A large-scale shelter survey led by UNHCR found that 62 per cent of refugees in Lebanon are living in apartments or houses. At the beginning of the crisis more than two years ago, most refugees lived with Lebanese families compared with the current figure of six per cent. With the majority of refugees battling rising rental costs, the demand for affordable, alternative shelter solutions is increasing. The Ministry of Social Affairs (MoSA) has approved eleven locations as sites for pre-fabricated wooden houses in the Bekaa, which will benefit more than 300 refugee families. The houses provide a more durable option than tents and are being transported and assembled by the Danish Refugee Council (DRC).

## More camps in Turkey to accommodate swelling numbers of vulnerable Syrians at the border

- Turkey - There are reportedly at least nine camps hosting an estimated 50-60 thousand internally displaced persons on the Syrian side of the Turkish-Syria border. The Disaster and Emergency Management Agency of Government of Turkey (AFAD) has stated that four additional refugee camps will be ready to receive new refugees by the end of June. This includes a new container site in Kilis scheduled to open later this month, which has the capacity for more than 3,000 prefabricated container homes that will shelter up to 20,000 people. A fourth camp in Sanliurfa province is under construction and will have the capacity to host 15,000 refugees. Works at an additional two sites is ongoing and, upon completion, will bring the total number of camps in Turkey to 21.



*A Syrian child stands amid tents provided by Kızılay, the Turkish Red Crescent Society, for refugees residing in Adiyaman refugee camp. UNHCR provides technical support to the government in assisting the refugees. UNHCR | B. Sokol*



## Building capacity on SGBV response in emergencies

- Jordan - UNFPA and Jordan's Institute for Family Health (IFH) are running a series of seven training workshops on the Prevention and Response to Sexual and Gender-Based Violence (SGBV) in Emergency Settings. The workshops are taking place throughout May and June in Amman, Mafrqa, Irbid, Aqaba, Zarqa and Zaatri camp. The training targets Government and non-Government health service providers and includes interactive sessions on SGBV, domestic violence, the role of the Family Protection Department and police personnel, how to care for SGBV survivors, Code of Conduct and case studies.

UNHCR and UNFPA are conducting a five-day workshop for key partners engaged in protection and SGBV-related programming across the region in response to the Syria crisis. The workshop builds technical knowledge and skills, and facilitates a process to develop plans to more effectively address SGBV-related programming and coordination challenges.

- Iraq - UNHCR, UNICEF, UNFPA and NGO partners conducted two three-day workshops on SGBV Prevention and Response as well as Community Services in the context of Iraq in Erbil. In total, more than 80 staff from response partners, the Government of Iraq and UN agencies participated. The workshop covered Protection from Sexual Exploitation and Abuse, guiding principles on SGBV and Youth empowerment, and used interactive approaches such as role-plays and group work.

## Assistance for cases of early and forced marriages and SGBV survivors

- Lebanon - UNHCR and partners in collaboration with local authorities are following up on reports of forced and early marriages, prostitution/trafficking and sexual harassment against women with a view of providing assistance and fortifying prevention mechanisms. In addition, efforts to maximize effective referral and response for SGBV cases are ongoing.

- Jordan - UNHCR expedites the registration of survivors of physical abuse and cases of early marriage. Thirteen SGBV survivors in Zaatri camp and Amman were identified through the registration process, home visits and counseling services. The women were advised on different protection mechanisms, provided with financial assistance and psychosocial support, and referred to the Family Protection Department upon receiving the consent of the survivor. UNHCR and partners will monitor the situation and ensure protection and assistance. UNHCR and implementing partner International Medical Corps (IMC) also began Best Interest Assessment procedures for 23 cases of early marriage identified in the urban areas of Irbid, Mafrqa and Ramtha through UNHCR registration and helpdesk services.

## Women and girls find sanctuary and assistance in dedicated safe spaces

- Iraq - Child and Youth Friendly Spaces are operating in both Domiz and Al Qa'im camps. UNFPA recently trained 15 volunteers for the Women's Social Space in Domiz camp with the Ministry of Labor and Social Affairs as key partners. The International Rescue Committee (IRC) and Harikar's Women's Listening Centre continues to receive cases. The centre is holding a series of information, awareness and life skills sessions to promote its services.

- Lebanon - In addition to the two UNICEF-supported community centres for women and girls in North Lebanon and the Bekaa, a new centre opened in Wadi Khaled in April. To date, over 1,200 women and girls have benefited from psychosocial services at the three centres, which offer individual counseling and emotional support groups, amongst other activities.

In South Lebanon, SHIELD continued its programme of activities for more than 70 women over the week in five Social Development Centres in Tyr, Nabatiye, Bint Jbeil, Marjayoun and Hasbayya. The activities aim to increase women's awareness on issues related to SGBV.

- Jordan - During the week, over 350 women and girls visited the UN Women-supported Oasis in Zaatri camp to participate in a program of recreational, educational and psychosocial activities. UNFPA and IFH-supported women and girls centres in transit sites Cyber City and King Abdullah Park, and Zaatari camp, combined with community-based activities for non-camp refugees, have reached 1,212 women and men.



Youth Friendly Space in Al Qa'im Camp 2. Save the Children | Muhanad

## Registration scale-up continues

- Egypt - UNHCR has adopted double shifts (mornings and afternoons) at the Zamalek registration centre in Cairo in an effort to reduce the current waiting period from two months to one month.
- Turkey - The AFAD Coordination Centre in Gaziantep province informed that the number of registration desks has been increased from one to six. All new arrivals are now registered on the same day, in addition to registering those who come for scheduled appointments. Government registration staff have been provided with UNHCR's categories of special needs for guidance and UNHCR field teams are working in all camps with camp management to identify the people with special needs.



UNHCR Mobile Registration in Alexandria, Egypt. UNHCR | A. Diab

## Insecurity at Zaatri camp compromises service delivery and staff safety

- Jordan - The overall security situation in Zaatri camp continues to cause concern. Incidents and insecurity are compromising the safety of staff, and affecting service delivery and the living conditions of residents. Smuggling of NFIs and vandalism occur on a daily basis. Investigations into electricity power outages found that power cords are connected illegally to caravans, affecting power supplies for other residents and service providers.
- Camp management are currently in the process of transitioning Zaatri residents from emergency tent shelters into more durable prefabricated caravans but the allocation of caravans has been repeatedly delayed by refugee interference and threats to staff safety. The community service team has put systems in place to ensure that refugees with special needs are identified and prioritized for caravans.
- UNHCR is developing a Zaatri Governance Plan to improve security and reduce exploitation in the camp by supporting more effective governance, service delivery and administration of justice.

## Unrest at the border intensifies

- Turkey - Earlier in May, an incident at the Turkish-Syrian border crossing point of Akcakale/Tal Abayd escalated into violence. Border security has now been reinforced and the Akcakale is officially closed. Two other border crossings (Kilis and Ceylanpinar) are open only for emergency purposes. UNHCR continues to advocate for open borders and the right of refugees to access protection space.
- Iraq - The Al Qa'im border in Iraq has been closed since 22 October 2012. As of 28 March 2013, the border point is closed even for family reunification, with some exceptions for females and minors less than 15 years old.
- Lebanon - Shelling across the border was reported on the outskirts of Al-Aaboudiyeh in North Lebanon. Some mortars also fell in the villages of Janine and Qashlaq, close to a UNHCR collective centre. No casualties have been reported. These incidents follow several reports last month of shelling reaching far into the Lebanese territory and affecting populated areas.

The regional response for refugees fleeing Syria is the coordinated effort of 65 participating agencies:

ACF | ACTED | AMEL | Arab Council Supporting Fair Trial and Human Rights | ARRD-Legal Aid | Association of Volunteers International | CARE International | CARITAS | Caritas Lebanon Migrant Centre | Centre for Victims of Torture | CHF International | CISP/RI | Coptic Evangelical Organization for Social Services | DRC | FCA/ACT Alliance | GVC/Muslim Aid | HAI | Handicap International | ICMC | IMC | IOM | International Orthodox Christian Charities | IRD | IRC | Internews | Intersos | Islamic Relief Worldwide | JEN | JHCO | JHAS | JRF | Madrasati Initiative | Medair | Médecins du Monde | Mercy Corps | Movement for Peace | NRC | Oxfam GB | People in Need | PU-AMI | Psychosocial Training Institute in Cairo | Questscope | Relief International | Restart | Save the Children Jordan | Save the Children International | Saudi National Campaign | ShelterBox | Terres des Hommes | THW | UAE Red Crescent | Un ponte Per | UNDP | UNESCO | UNFPA | UNHABITAT | UNHCR | UNICEF | UNOPS | UNRWA | UNWOMEN | War Child Holland | WFP | WHO | World Vision International

Humanitarian response partners are invited to contribute to this report. For more information or to be added to the distribution list, please contact [Anna King](mailto:Anna.King@unhcr.org), UNHCR Regional Reporting Officer | [kinga@unhcr.org](mailto:kinga@unhcr.org)