

Meeting Vulnerable Municipalities

26 July 2013



Lebanese Host Community Vulnerability

- 28.55% of the Lebanese population is estimated to be living on less than 4USD/day based on a 2008 UNDP study with data collection in 2004
- Poverty estimates from this study gives a break-down at the “combined Caza” level (Admin level 2)
- Similar proportions are assumed at the locality level (UNPD, 2008)



Republic of Lebanon
Presidency of the Council of Ministers













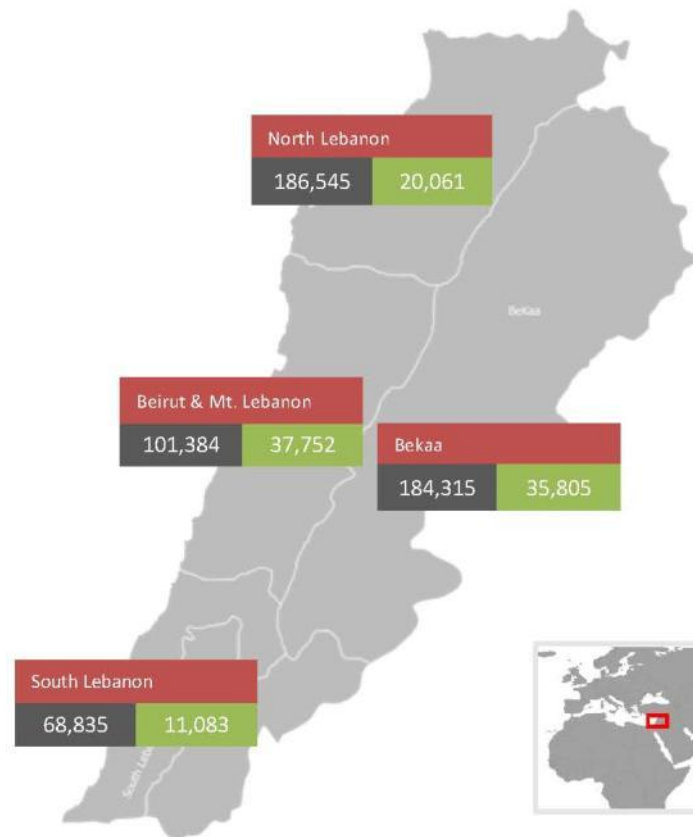
Daily Statistics

Registered on 24 Jul 2013 

Beirut & Mt Leb	894
North	525
Bekaa	964
South	236
Total	2,619

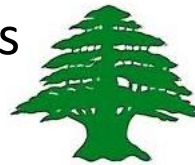
	645,780	Total
	541,079	Registered
	104,701	Awaiting

Governorate		Registered	Awaiting	Average waiting period	Total
Beirut & Mt Lebanon	Persons 	101,384	37,752	42 days	139,136
	Households 	23,976	9,013		32,989
North	Persons 	186,545	20,061	28 days	206,606
	Households 	46,050	5,299		51,349
Bekaa	Persons 	184,315	35,805	35 days	220,120
	Households 	38,384	7,304		45,688
South	Persons 	68,835	11,083	22 days	79,918
	Households 	14,829	2,612		17,441
Total Lebanon	Persons 	541,079	104,701	35 days	645,780
	Households 	123,239	24,228		147,467



Creation of a New Map

- The map has been developed in cooperation with the Presidency of Council of Ministers (NPTP), UNICEF and UNHCR
- Shows the distribution of Lebanese poor and registered refugees at cadastral level
- With the assumption that a high percentage of refugees correlated with an high percentage of vulnerable host community increase the vulnerability of the area. By identifying priority cadastres for efficient targeting and maximum effectiveness – the worst quintile includes 85% of registered refugees and 67% of poor Lebanese.**
- These maps should guide programs interventions that benefits both host communities and refugees



Republic of Lebanon
Presidency of the Council of Ministers



Creation of a New Map (1)

Method used:

- Number of Lebanese living on less than 4 USD/day by combined Caza level
- Break down by cadastral level
- Creation of a **poor Lebanese index** - number of poor people in a cadastral over the cadastral in Lebanon with a high number of poor people
- Creation of a **refugee registered index** - number of registered refugees by cadastral over the cadastral with a high number of registered refugees



Republic of Lebanon
Presidency of the Council of Ministers



Creation of a New Map (2)

- Creation of a **GEOMEAN** – mathematical way to merge the two indexes in a single value – that provide a single dimension for prioritizing cadastral based on the range of poverty by cadastral from the highest to the lowest
- Division in quintile - exact division of the GEOMEAN in 5 equal groups (excluding those that do not have either refugees or Lebanese poor):
 - ✓ Level 1 – most vulnerable
 - ✓ Level 2 – high
 - ✓ Level 3 – medium
 - ✓ Level 4 – low
 - ✓ Level 5 – lowest
- Division of Level 1 in other quintile – creation of the Worst of the Worst.

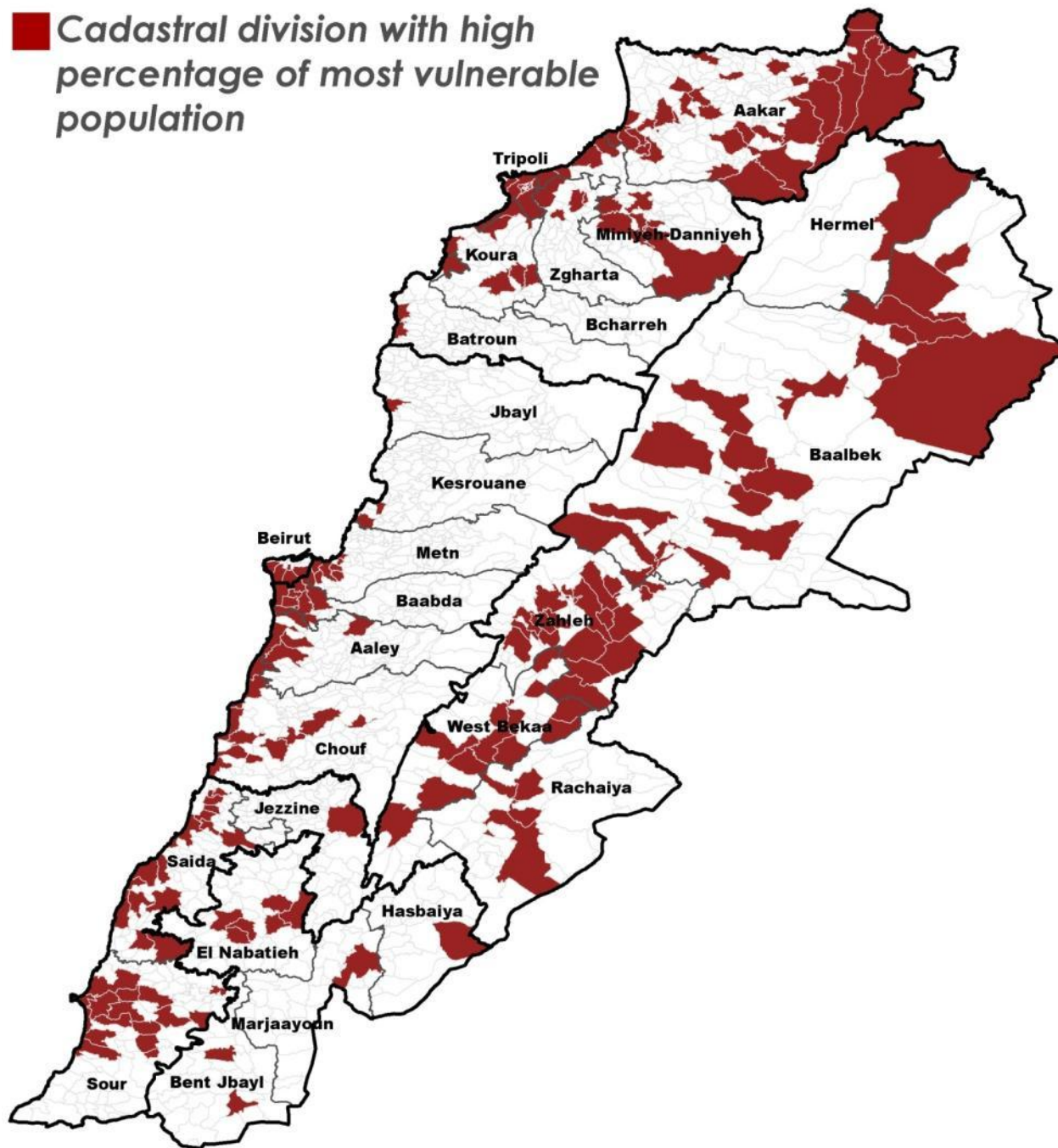


Republic of Lebanon
Presidency of the Council of Ministers



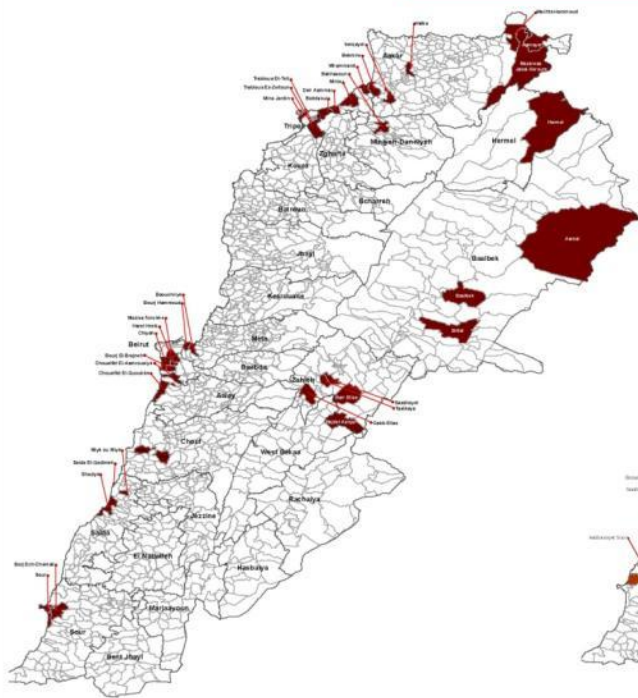
Lebanese Vulnerable Population Map

■ Cadastral division with high percentage of most vulnerable population

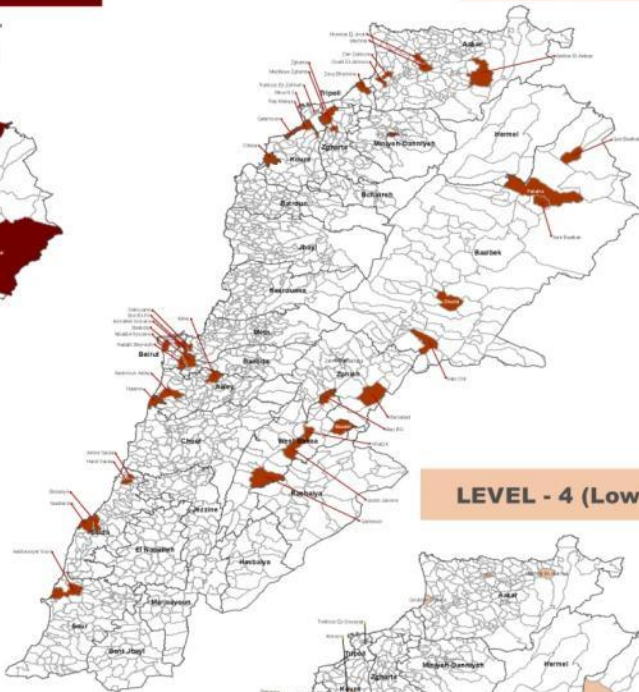


Lebanon Map of Vulnerable Population Groups

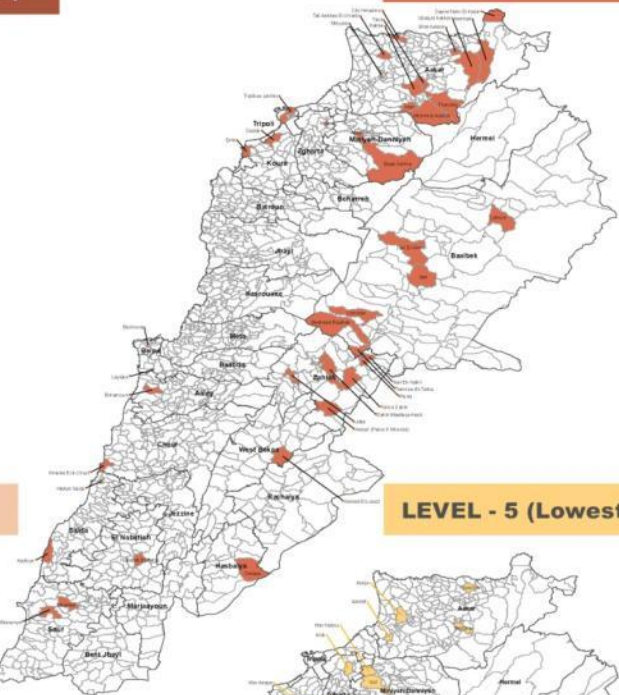
LEVEL - 1 (Worst)



LEVEL - 2 (High)



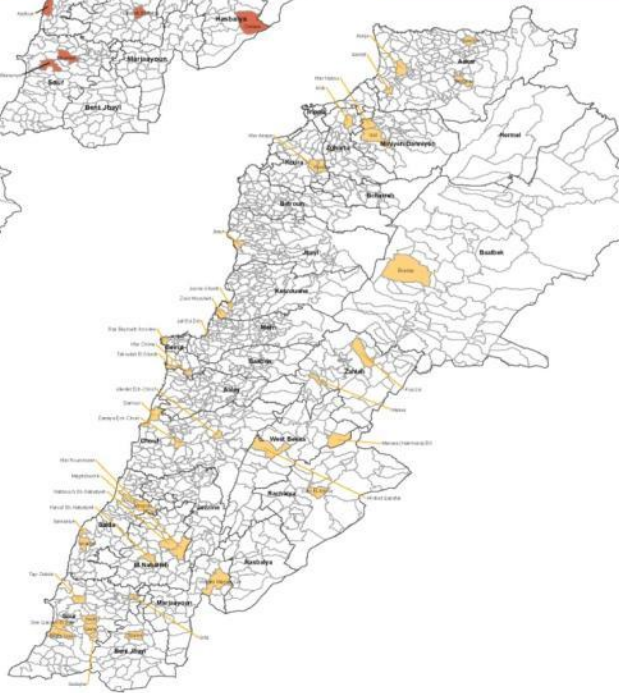
LEVEL - 3 (Medium)



LEVEL - 4 (Low)



LEVEL - 5 (Lowest)



Lebanon being one of the countries affected by the Syrian Crisis is embarking on its 3rd round of regional response planning. Although the refugee population has multitude of vulnerabilities that need immediate response for basic living interventions, the effects of the crisis is also spreading much deeper into the fragile social fabric of the Lebanese population. The crisis Lebanon had almost 30 percent of its population living on less than 4 USD per person per day, counting for almost 1.2 million people if projected on today's population (ca. 4.2 million). The refugee population is mostly concentrated in the northern and eastern peripheries of the country, though latest UNHCR registration figures also show that the population is widely scattered over the entire country and in almost every municipality/village. For the purposes of having a much more focused approach in targeting the 3rd response plan, a priority list of localities would be needed capturing the different vulnerabilities: the Lebanese population and the Syrian refugees. To operationalize this plan, different data sets were utilized to identify and map the different population distributions on the locality level.

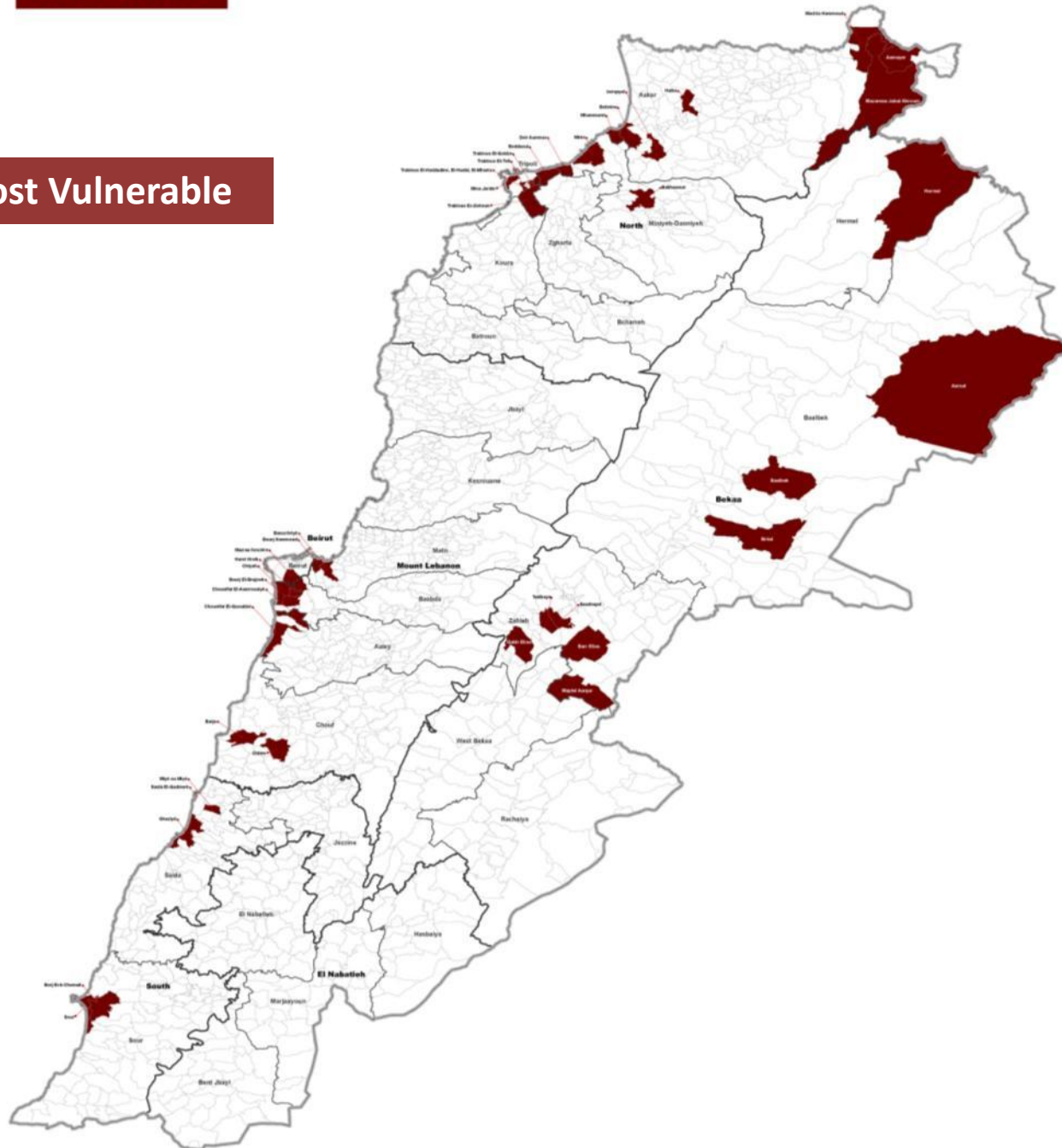
The data sets

- 1. To be able to eventually map the data on locality level, a base shapefile was utilized as the point of aggregation for all the other variables.
- 2. The shapefile is available online on <http://gisdata.unhcr.org/lebanon/27338> which includes the 3rd admin level population distribution as well. The source of the shapefile is the CIA (Council for Development and Reconstruction) (see full reference below).
- 3. The 38.58% of the Lebanese population is estimated to be living under AUSD (absolute) day based on the UNHCR study of 2009 where the data was collected in 2004. The poverty estimates from this study gives break down on "combined Coast" level (admin level 2), the same proportions are assumed at the locality level (UNHCR, 2009).
- 4. The refugee population distribution is obtained from the UNHCR registration database. It is matched on the above locality shapefile.

The boundaries, names, and designations used on this map do not imply official endorsement of the United Nations or UNHCR. All data used were the latest available at the time of map production.
DIB and Mapping by UNHCR

LEVEL - 1 (Worst)

Level 1- Most Vulnerable

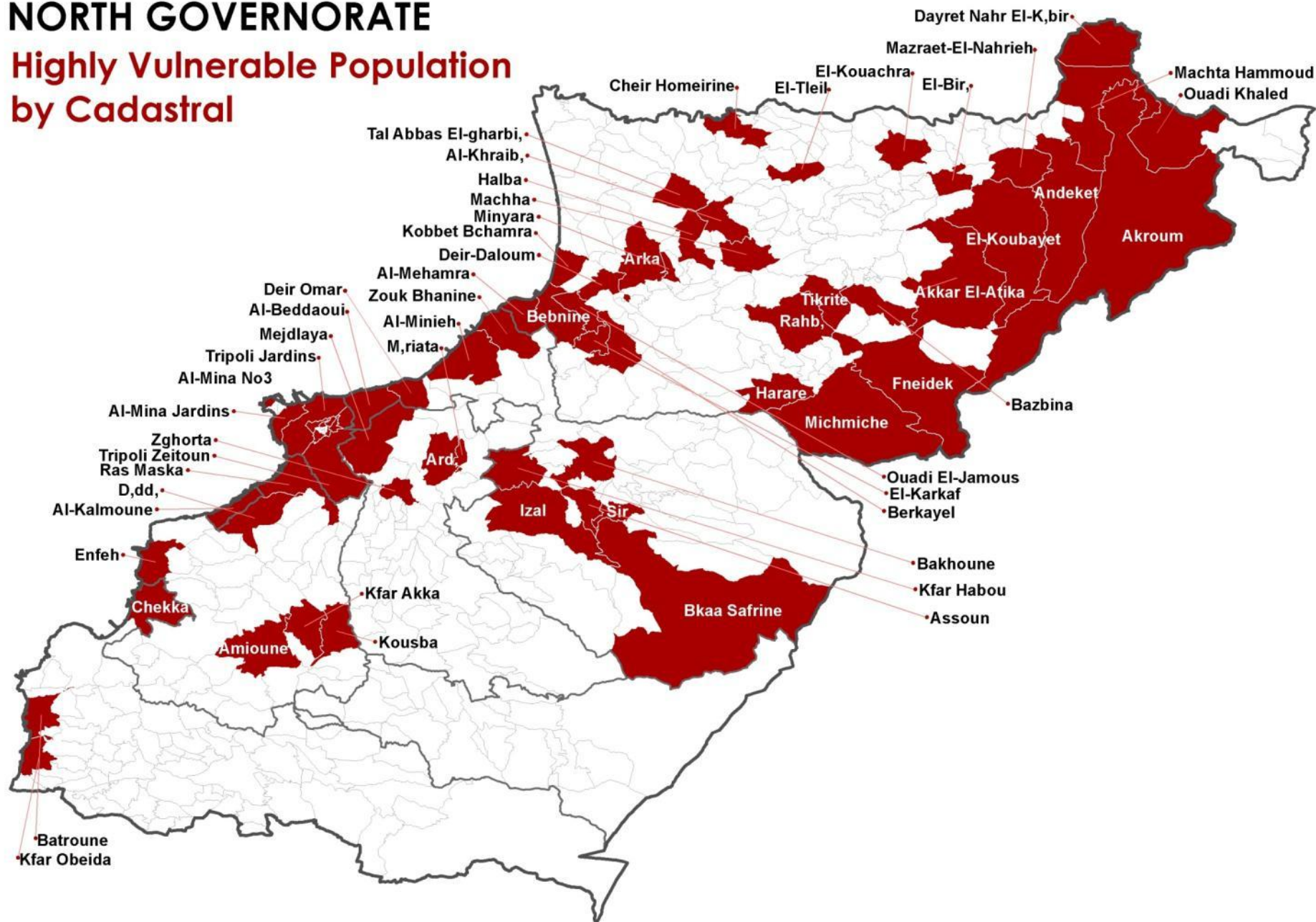


Next steps on the analysis

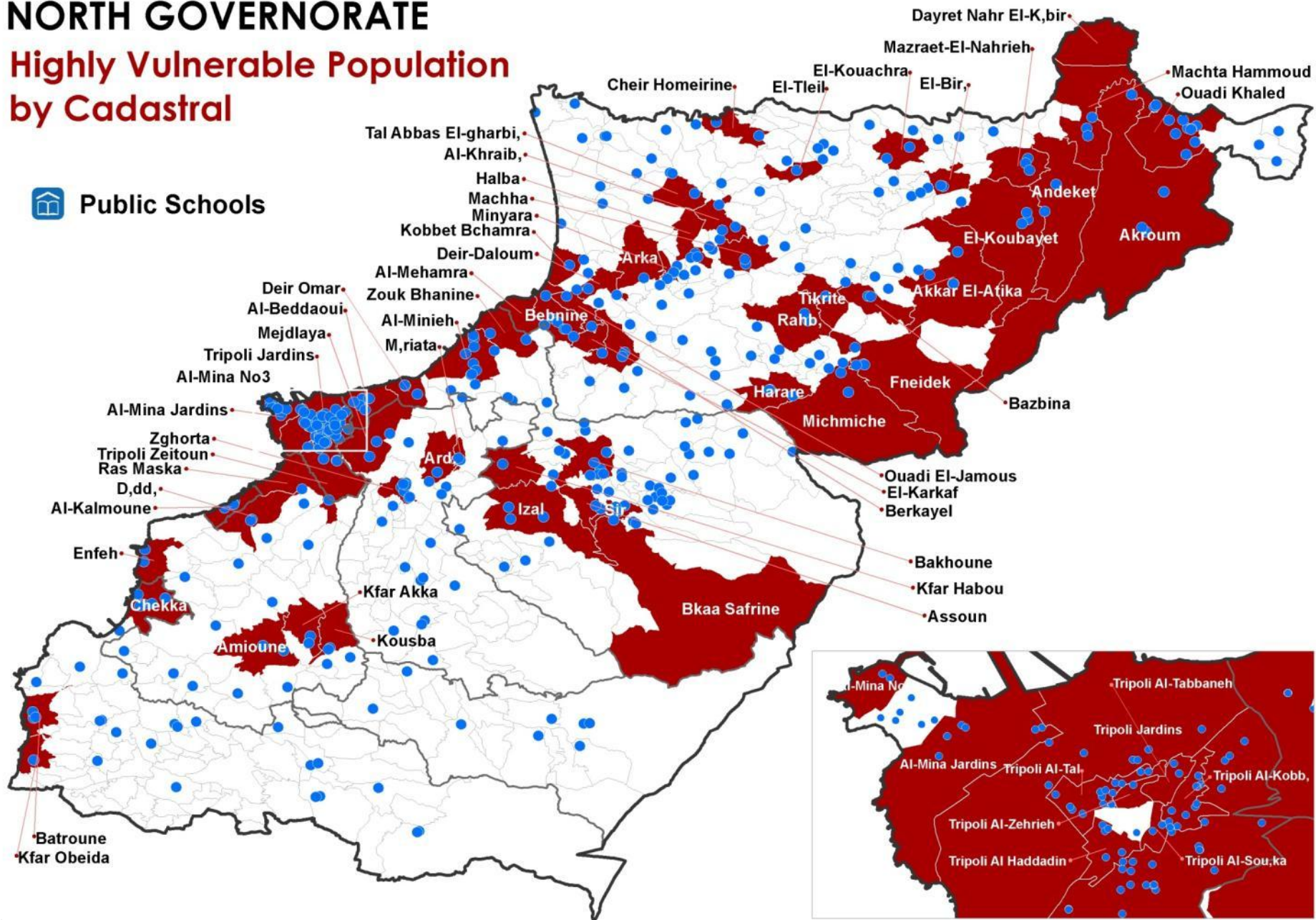
- Analysis of the public infrastructure present in the areas defined as “Most vulnerable”
- An example for North Lebanon

NORTH GOVERNORATE

Highly Vulnerable Population by Cadastral



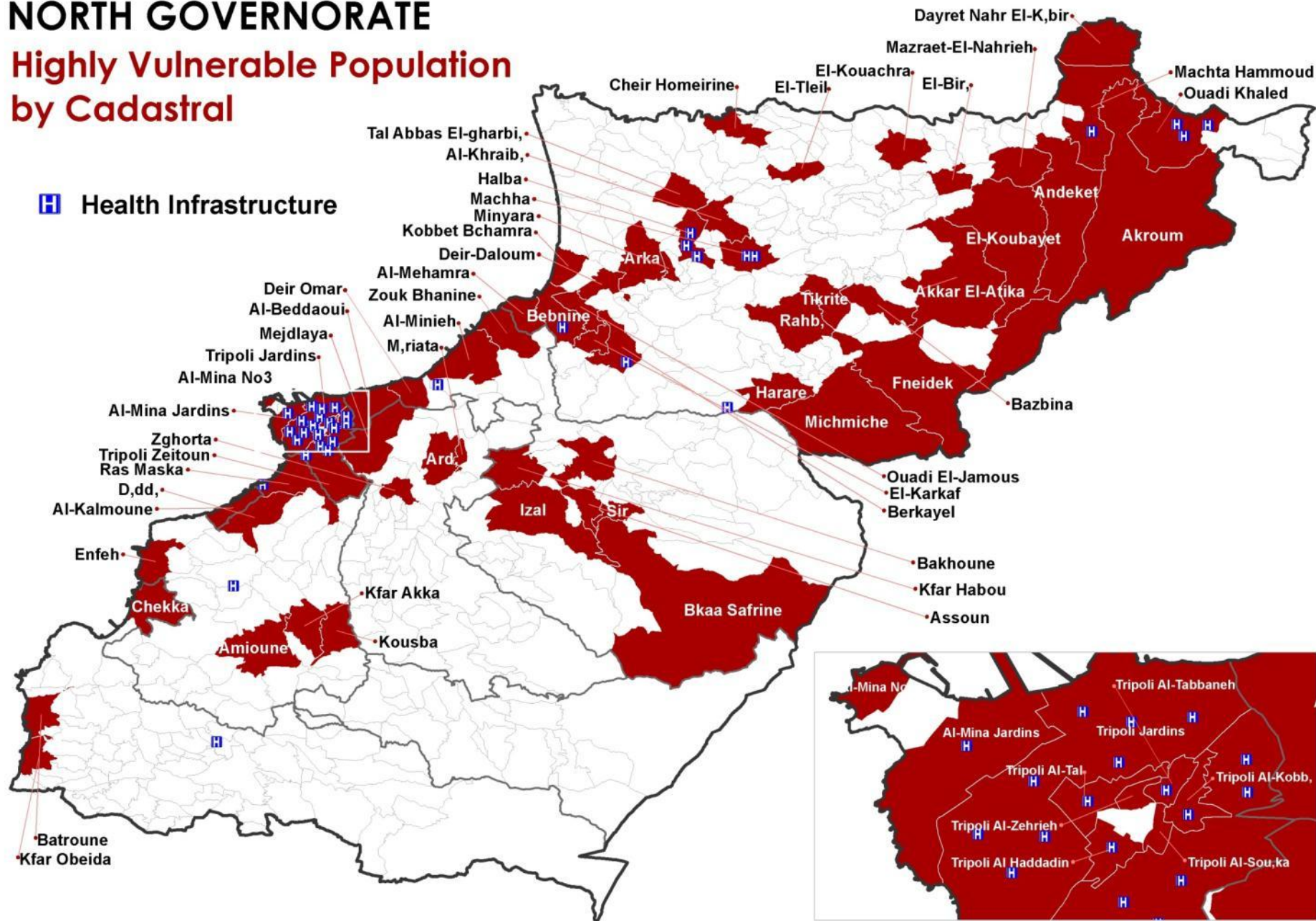
Highly Vulnerable Population by Cadastral



NORTH GOVERNORATE

Highly Vulnerable Population by Cadastral

 Health Infrastructure



NORTH GOVERNORATE

Highly Vulnerable Population by Cadastral



Social Development Centers

