



**Inter Agency Coordination Meeting – 2 August 2013**




# AGENDA











1. Security Updates
2. Poverty/ refugee mapping
3. Vulnerability & targeting updates
4. Protection related issues
5. AOB

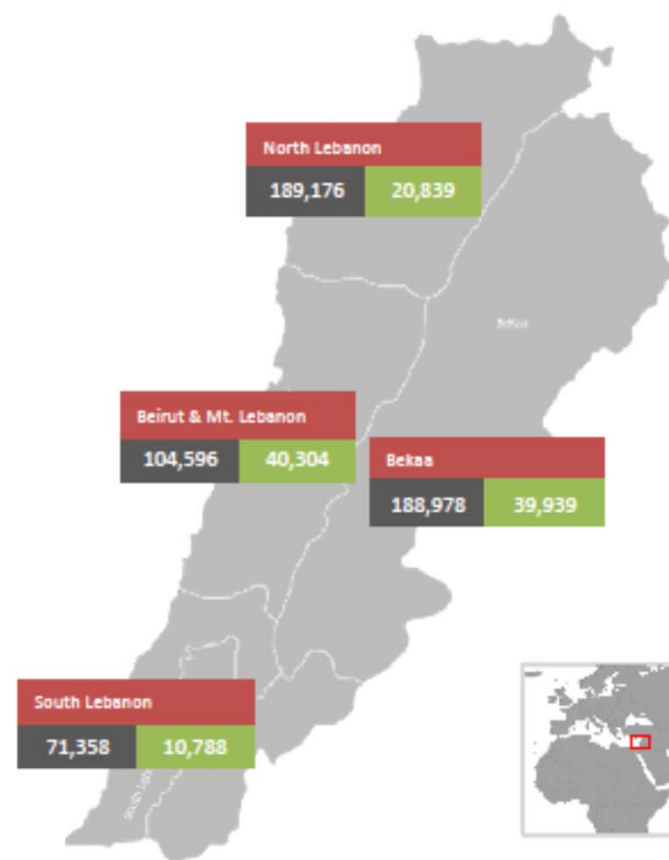
## Daily Statistics

Registered on 31 Jul 2013

Beirut & Mt Leb	770
North	537
Bekaa	978
South	587
<b>Total</b>	<b>2,872</b>

	<b>665,978</b>	<b>Total</b>
	<b>554,108</b>	<b>Registered</b>
	<b>111,870</b>	<b>Awaiting</b>

Governorate		Registered	Awaiting	Average waiting period	Total
Beirut & Mt Lebanon	Persons 	104,596	40,304	45 days	144,900
	Households 	24,744	9,627		34,371
North	Persons 	189,176	20,839	30 days	210,015
	Households 	46,746	5,533		52,279
Bekaa	Persons 	188,978	39,939	36 days	228,917
	Households 	39,312	8,210		47,522
South	Persons 	71,358	10,788	24 days	82,146
	Households 	15,405	2,563		17,968
<b>Total Lebanon</b>	Persons 	554,108	111,870	37 days	665,978
	Households 	126,207	25,933		152,140



# SECURITY UPDATES

## Overall situation:

- Tensions at the border reduced;
- Sectarian tensions country-wide and Tripoli reduced;
- IED threat remains valid;

## Impact on UN and wider humanitarian community:

- UN and INGOs are not directly targeted;
- Collateral threats remains a concern: caught in cross fire, affected by rocket attack or IED explosion, caught in civil unrest;

# SECURITY UPDATES

## Major incidents over last two weeks:

- 07 July: IED against LAF in Hermel
- 09 July: IED in Bir al Abed, South Beirut;
- 16 July: IED in Majdel Anjaar, Bekaa;

## Significant developments:

- Rise in IED related threats;
- HZB military wing – blacklisted by the EU
- JaN announced creation of its “Lebanon branch”

# SECURITY UPDATES

## Outlook:

- Resumption of political/sectarian tensions after the end of Ramadan;
- Continued insecurity in Tripoli;
- Syrian opposition affiliated groups to continue targeting HZB;

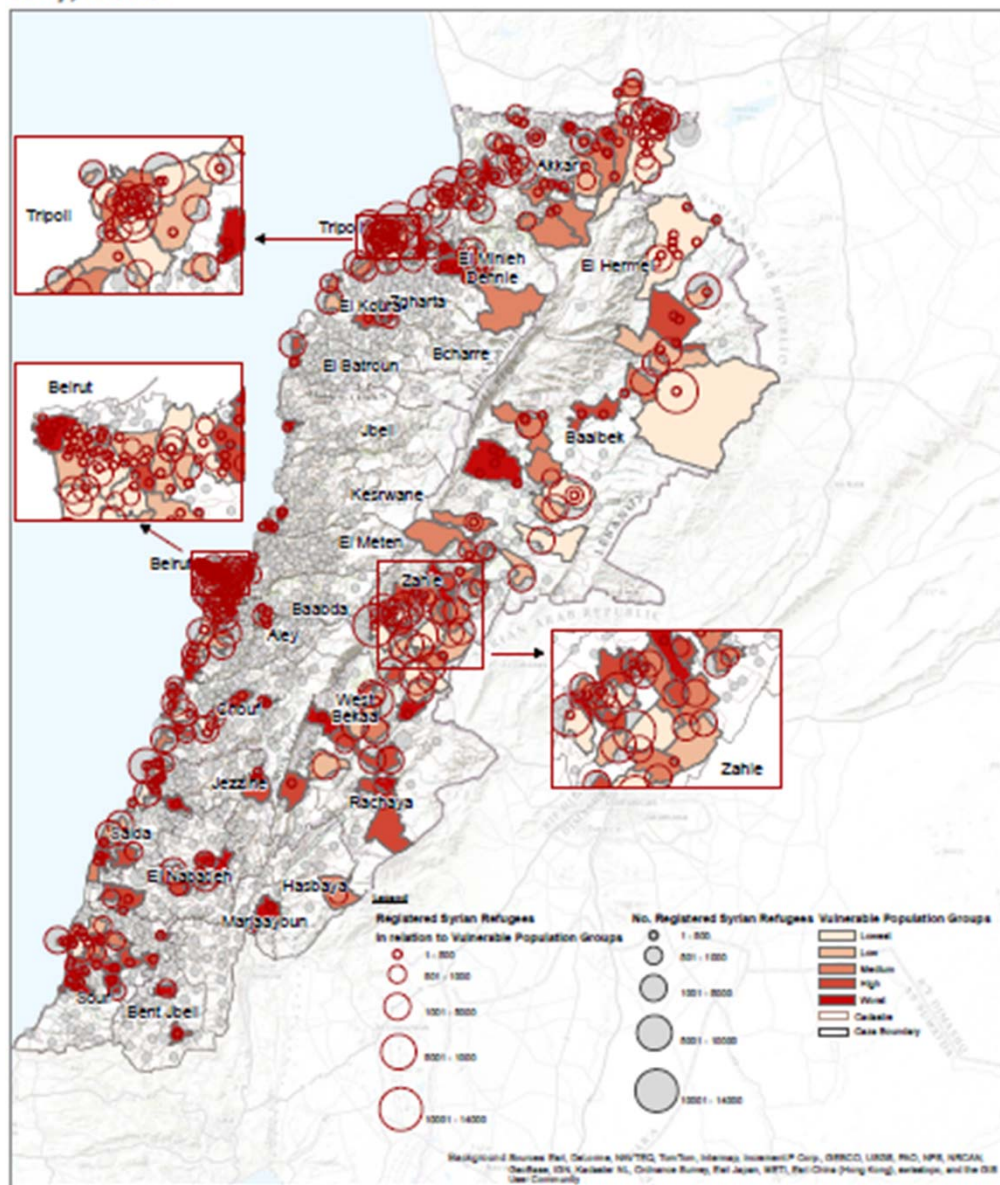
## Recommendations:

- Remain alert and vigilant;
- Avoid proximity to LAF installations and convoys

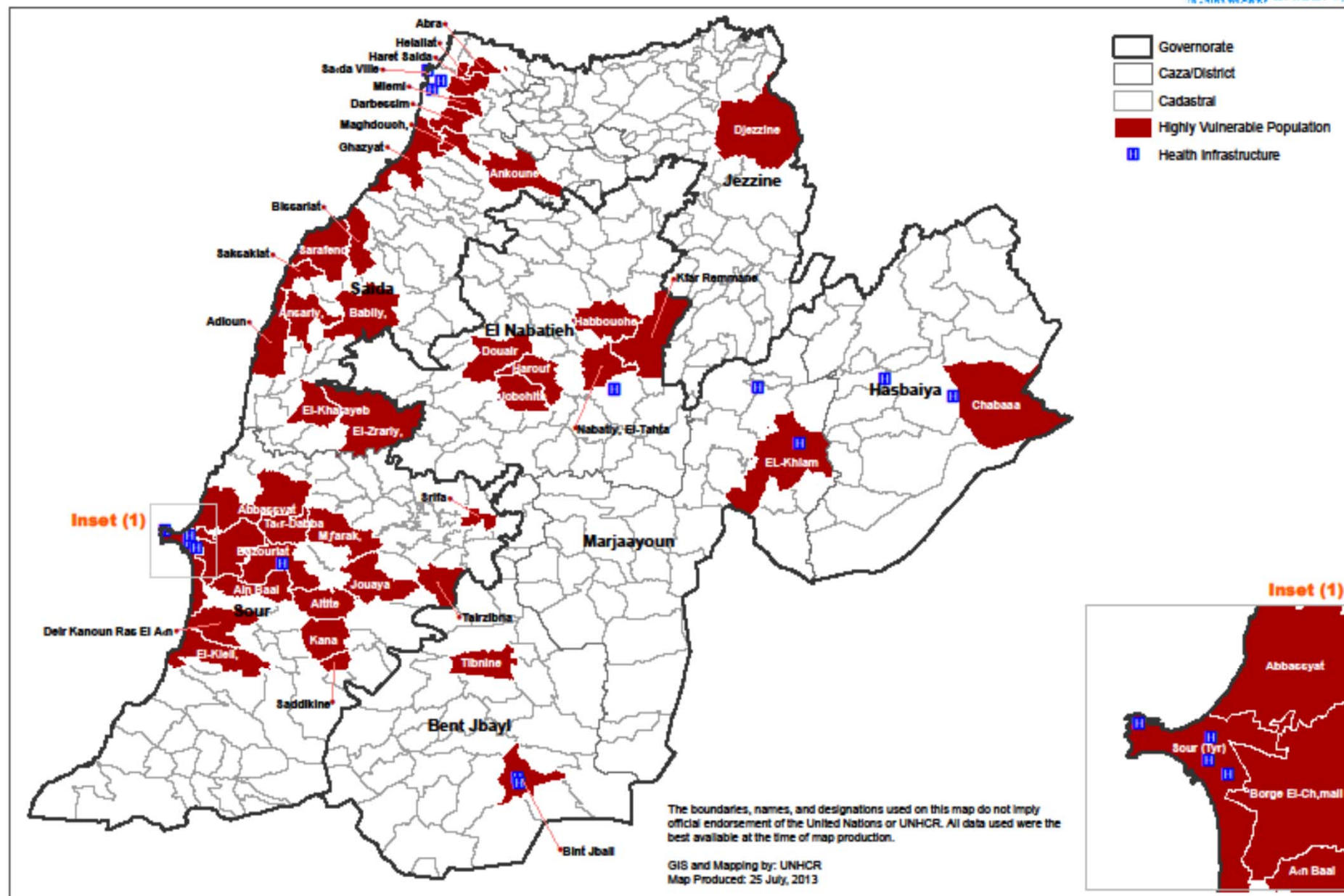


## SYRIA REFUGEE RESPONSE LEBANON

### Vulnerable Population Groups in Relation to Registered Syrian Refugees July, 2013



## Health Infrastructure

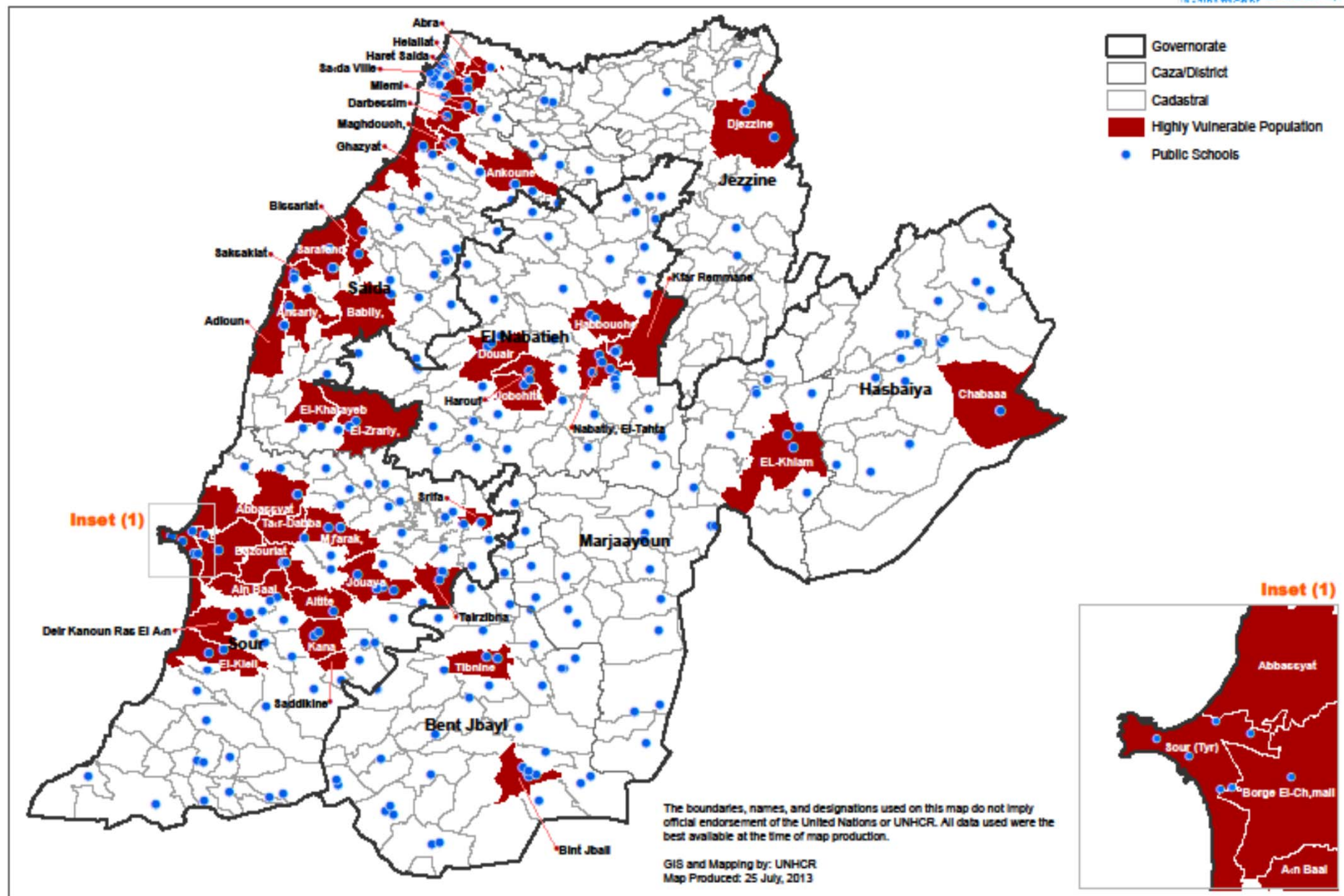




# LEBANON SOUTH AND EL NABATIEH GOVERNORATES

## Highly Vulnerable Population by Cadastral

### Public Schools



# SECTOR UPDATES



# PROTECTION-Borders

## **Border Developments**

- Since 22 July 2013, stricter border controls by GSO at Masnaa, requiring full documentation (not damaged) and not individual status records.
- Reverses previously flexible approach adopted since mid-2012.
- Small numbers being turned back since 22 July.

## **Media Statements on Safe Areas in Syria**

- Statements have been made by various sources that Government would in future differentiate between Syrians fleeing conflict areas and others.
- The Government reiterated assurances Lebanon would remain open to Syrians fleeing violence and seeking safety.

## **UNHCR and Border Management**

- UNHCR and MOSA working with GSO on possible measures to enhance border control and access to assistance in a protection sensitive manner.



# PROTECTION-Legal Status

## Irregular Legal Status for Syrians

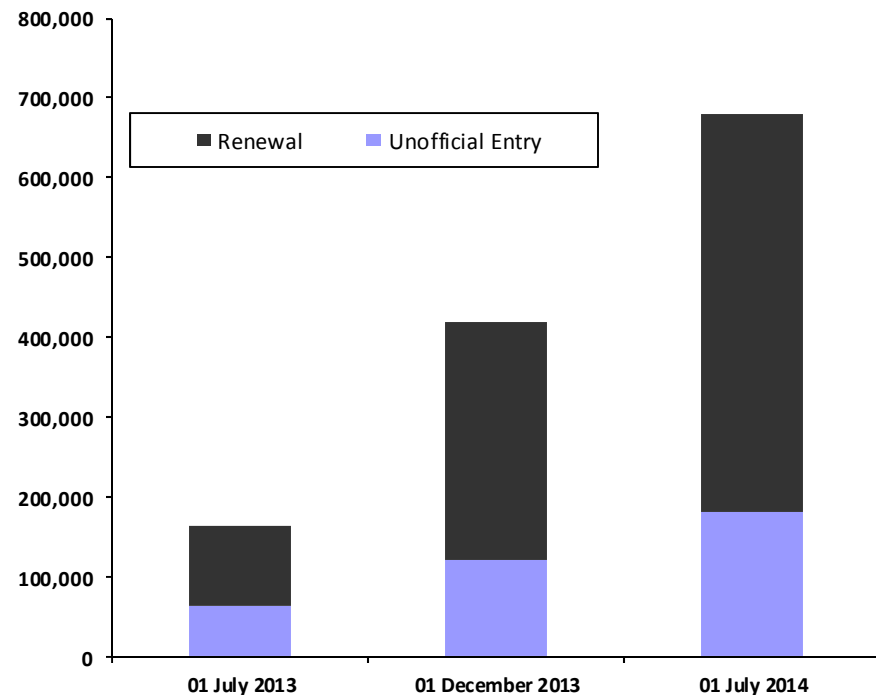
- 12% of registered Syrians entered unofficially
- Majority projected unable to afford USD200/person renewal after 12 months

## Protection Concerns

- Freedom of movement, arrest
- Obstacles to services, livelihoods
- Exploitation, access to justice
- Birth registration

## Strategic Actions

- Joint advocacy to GOL
- NRC assessment
- Multi-sectoral interventions





# PROTECTION-Evictions

## Increasing Trend in Eviction Threats

- Since June, notable increase in eviction threats reported in ITS and CS
- Including: Akkar (Kneisseh, Bebnine, Chekh Aayach, Tikrit), Bekaa (Layan, Taanayel, Bar Elias), Tripoli (Zgharta, Kfarzeina), Mt Lebanon (Khalda)

## Strategic Actions on Security of Tenure

<b>Monitoring</b>	Joint Shelter & Protection Eviction Tracking Tool
<b>Advocacy</b>	Discussions with ISF and Security Cell, Qaimaqams at field-level
<b>Legal Aid</b>	Legal aid to tenants based on Art. 542, 543 establishing tenure security for unwritten contracts; major obstacle is irregular legal status
<b>Draft ISF Guidelines</b>	Coordination with ISF for adequate notice period by municipalities
<b>Shelter Alternatives</b>	Identifying shelter alternatives, particularly for vulnerable women and children





# PROTECTION-Update

## Highlights:

**Registration:** Total number pending has significantly increased to 110,596 as of 29 July due to security incidents in the North and reduced scheduling/increase in no-show rates for Ramadan. Current waiting period is 35 days country wide.

**Akkar:** Reports from Arida/Aboudiyah border crossings indicate increased flows in July. New arrival monitoring indicates some 50% irregular. Ongoing efforts to transport undocumented Syrians in Wadi Khaled for registration. Relocation of one refugee family threatened by host community. Strong concerns over bullying of refugee children and lack of recourse.

**Tripoli:** Growing eviction threats and rising tensions between refugees and host communities around curfews. Arrival of two Syrians by sea from Turkey. Birth registration info session begun at registration. IMC opened a new community center on 23 July.



# PROTECTION-Update

## Highlights:

**Bekaa:** Stricter border control at Masnaa since 22 July. Inter-agency assessment in Aarsal reported abuse and harassment of Syrians at settlements at night. Eviction threat at Layan formal tented settlement.

**Mt Lebanon:** Alleged rise in Syrian workers and criminality concerns by municipalities. Some Syrians relocating to Mt Lebanon from other locations. Livelihood program for Syrian women begun in Amel.

**Tyre:** Successful transport of 60+ families to registration from villages in Hasbaya. Continued small numbers of arrivals into Shebaa after re-intensified fighting on Syria side.

## Action Points:

- Consolidation of National Protection Strategy following Workshop
- MOI/ISF participation with MOSA in PWG established; MOJ next



# Child Protection in Emergencies (CPiE)-Update

## Highlights:

- Conducted 03 field and a national workshop with CPiE Working group members as part of a consultative process to develop the CPiEWG strategy 2013-2014
- Child Labour, including the worst forms of CL, is raised as a major issue across the country, with increasing concerns that this may be exacerbated by the plans to provide targeted assistance.
- 3,532 children benefited from psychosocial support interventions in the past month
- Completed a survey on the capacity building needs of child protection actors in Lebanon highlighting the need for CPiE training at all levels.

## Action Points:

- Drafting CPiE strategy 2013-2014
- Capacity building strategy and training plan
- Development of inter-agency Case Management Tools



# SBGV Task Force-Update

## **Key protection issues for women and girls**

- Increased vulnerability to (sexual) exploitation (including by shelter/apartment owner)
- Negative coping mechanisms (survival sex and child marriage)
- Fear of passing through army check points (Wadi Khaled and Arsaal)

## **Key achievements**

- Expansion of GBVIMS roll-out with 14 new organizations trained in July (UNHCR)
- Lead Case Management agencies per hub established (including better coverage for South) and 2 case management trainings conducted in July (IMC-ABAAD-UNICEF)
- Opening of 3 mid-way houses (UNHCR-DRC-UNHCR-ABAAD)



# SBGV Task Force-Update

## Key activities planned

- Clinical Management of Sexual Violence continue to require urgent attention : collaboration with RH WG/UNFPA and upcoming training (UNICEF/ABAAD)
- Increased work with frontline workers (induction training for WASH UNICEF/IRC - TOT for SOP roll-out in Bekaa SGBV field WG)
- Community-based campaign on negative coping-mechanisms

## PSEA

- UN PSEA Task Force has been established in June under the auspices of the RC/HC (joint UNHRC/ UNICEF advocacy) ; workplan will be presented at next UNCT meeting (UNHCR-UNICEF already started training their staff and to engage MOSA to reach to faith-based organizations). Specific briefing during next IA meeting.





# SHELTER-Update

## Highlights:

- As of 31st of July 2013, 21,204 Syrian HH (107,368 IND) have received one or more forms of shelter assistance. This forms 16.20 % of the total registered and awaiting refugees (663,010 as per reg. figures of July 30th, 2013).
- In July, over 2,276 Households received Shelter assistance.
- More than 101 collective centres have been identified, under approval or works on going; 45 CCs are active and hosting 1,071 HH, 5,356 Individuals as of end of July 2013



# SHELTER-Update

## Action Points:

- Shelter Sector members are working closely with MOSA staff and local authorities towards identification/implementation of needed formal tented settlements (of a maximum of 20 shelter units each). 19 sites have already been approved mainly in the North and in Beka'a, process ongoing.
- A table of various shelter options agreed/approved by MOSA was prepared and disseminated to sector members towards a harmonized and expedient provision of assistance to refugees.
- To expedite the process of provision of shelters, specifically houses for rehabilitation/use by refugee families, a new approach is under review whereby house owners themselves will be contracted to renovate their houses and provide shelter to refugees within.
- SOPs, Guidelines, and other policy documents, produced by various shelter sector members will be reviewed, with the objective of adopting them by sector members towards a more harmonized approach to refugee assistance in provision of shelter options.



# WASH - Update

## Highlights:

- Strategy workshop held and working group formed to revise the WASH Sector Strategy.
- WASH response map for North, South, Bekaa and MtLeb/Beirut (Who is doing What Where at the Cadastral level highlighting areas with/without WATSAN response and hosting registered refugees over 200.
- Revision of 5W to incorporate ITS and Collective Centres and clarify interventions against standards and RRP5 targets and priorities.

## Action Points:

- Finalize technical guides on water, sanitation and hygiene promotion by end Aug.
- Produce new WASH Sector Strategy by end Aug.
- Hygiene Promotion training in Sept.



# PUBLIC HEALTH-Update

## Highlight:

- Over the last couple of week, health partners have noted an increase in the number of acute watery diarrhea. Cholera – one of the highly contagious causes of watery diarrhea has not been suspected nor reported. Reports from WHO suggest that the measles epidemic is receding and there few cases being reported. 240 cases of cutaneous and 3 cases of visceral Leishimania have been reported - all are under treatment.

## Action Point:

- a. Intensify our efforts to report acute diarrhea so that MOPH can get a full picture and if necessary investigate outbreaks.
- b. Intensify our efforts hygiene promotions, save disposal of waste (human and solid) and improve access to potable water.



# PUBLIC HEALTH-Update

## Highlight:

- Plans are under way to conduct a nutrition survey among refugees and possibly surrounding hosting community. The survey commences towards the end of August or thereabout. In last survey (2012) the level of GAM was 4% among children under 5. Some of the drivers for malnutrition could be: poor living conditions (WASH) and poor infant and young children feeding practices.

## Action Point:

- Support the nutrition survey
- Intensify WASH, encourage breast feeding and discourage distribution of breast milk substitutes





# PUBLIC HEALTH-Update

## Highlight:

- UNHCR's partner for chronic care drugs is intensifying efforts to dispense drugs through its network of about 240 dispensaries. Newly diagnosed refugees put on treatment can access drugs within a day. YMCA can authorize dispensing on the dugs over the phone.

## Action Point:

- Information for partners working in the health sector.



# EDUCATION - Update

## Highlights:

- MEHE approved second shift schooling so can cater for more children next school year;
- South coordination group started;

## Challenges:

- Second shift schooling is very expensive ; government cannot pay it.



# Food Security - WFP

## Highlights:

- WFP has distributed vouchers to 474,335 beneficiaries and food parcels for 38,410 beneficiaries in July (total: 512,745).
- WFP's July Cycle was brought forward to accommodate beneficiaries who are observing Ramadan.
- Despite delays caused by the recent instability throughout Lebanon, WFP has still be able to reach almost all of its beneficiaries for the July cycle.
- The data analysis for the VASyR is complete; sectors have finalised targeting criteria and a formula that incorporates data from ProGres is near completion.
- A mass public information campaign is underway to sensitize beneficiaries to the upcoming targeting.

## Action Points:

- Carefully monitor the security situation to allow safe access to beneficiaries.
- Sectors to complete targeting criteria from the VASyR data.



# NFI Sector-Update

## Highlights:

- Provided input to revise the Multi-Sectoral Rapid Group Assessment form
- Revised the IA contingency plan by removing scenarios in the UNCT plan
- Advanced planning on UNHCR's NFI programme (winterization & stocks)
- Prepared an IA Winterization Action Plan in conjunction with Shelter
- Offered agencies the possibility of NFI procurement through UNHCR
- Drafted the NFI / Newcomer Issues Working Group TOR

## Action Points:

- Area Offices (except Bekaa) still to make geo-division of responsibilities (by place = 'p-code')
- NFI / Newcomer Issues Sector Update – still needed
- 'Flyer' for donors & public on standardized assistance packages (based on mass communication with refugees 'Q&A')

All the document will be  
uploaded on  
**Syrian Refugee Response  
web portal**

<http://data.unhcr.org/syrianrefugees/country.php?id=122>





**THANK YOU**