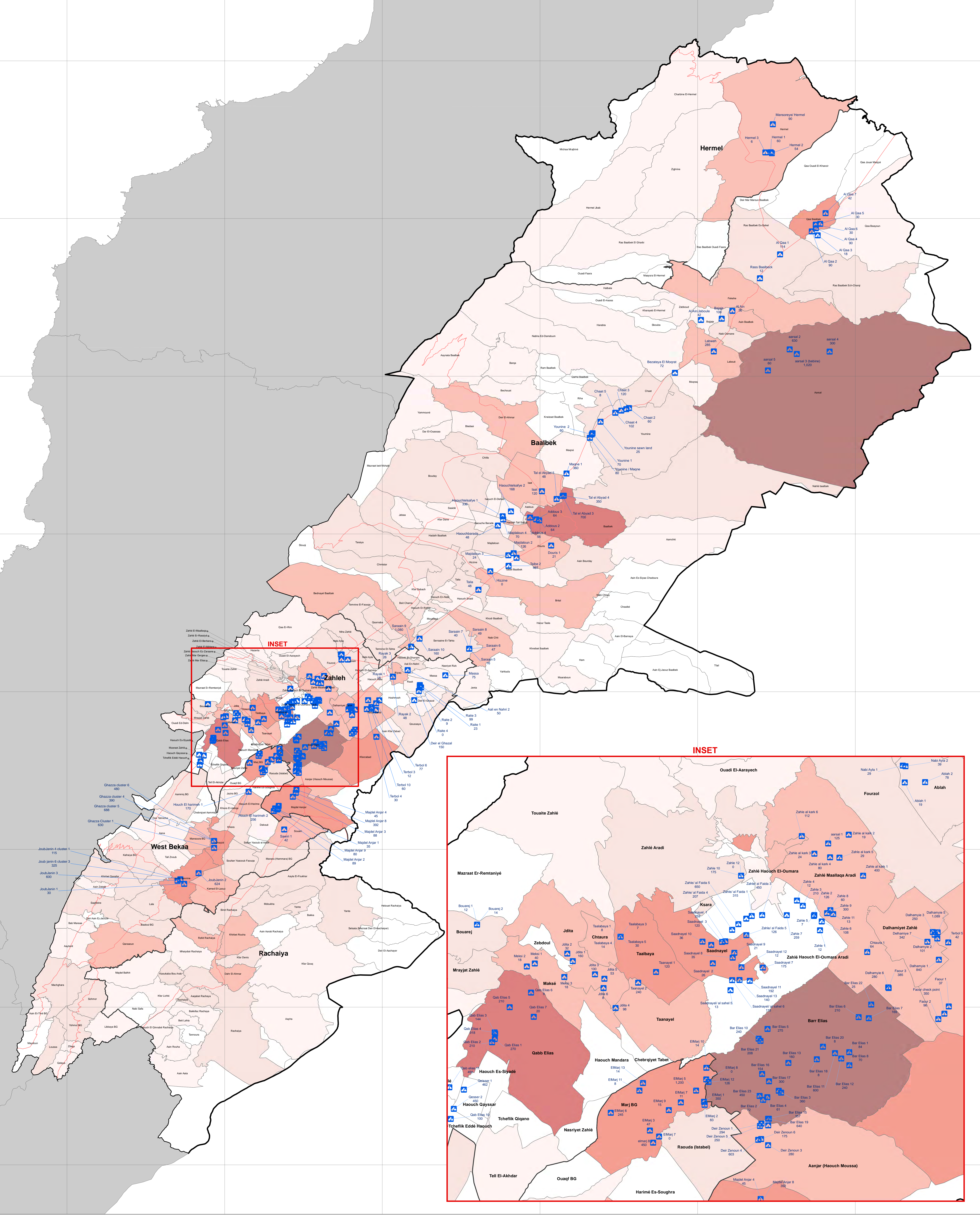


SYRIA REFUGEE RESPONSE

LEBANON Bekaa Governorate

Informal Tented Settlement (ITS) Locations and Number of Individual Refugees per ITS

September 2013



The boundaries, names and designations used in this map, do not imply official endorsement of the United Nations or UNHCR.

All data used in this map are the best available at the time of map production.

GIS & Mapping by UNHCR.  
For more information about mapping: contact Wali Ahadi at [ahedi@unhcr.org](mailto:ahedi@unhcr.org)

Map Production Date: 05 Sep 2013  
Preferable Print size A0

Data Source:

Informal Tented Settlement Location and number of individual refugees in each ITS by Shelter Sector

Population figures by UNHCR as of 29 August, 2013.  
For further information and updates on the refugee data; contact Rana G. Ksaifi at [ksaifi@unhcr.org](mailto:ksaifi@unhcr.org)

GIS & Mapping by UNHCR.  
For more information about mapping: contact Wali Ahadi at [ahedi@unhcr.org](mailto:ahedi@unhcr.org)

Legend

- Informal Tented Settlements (ITS)
- Governorate
- District
- Cadastral
- Major Roads

No. of Syrian Refugees Registered per Cadastral

- 0
- 1 - 100
- 101 - 1,000
- 1,001 - 5,000
- 5,001 - 10,000
- 10,001 - 15,000
- 15,001 - 18,000



LOCATION DIAGRAM

