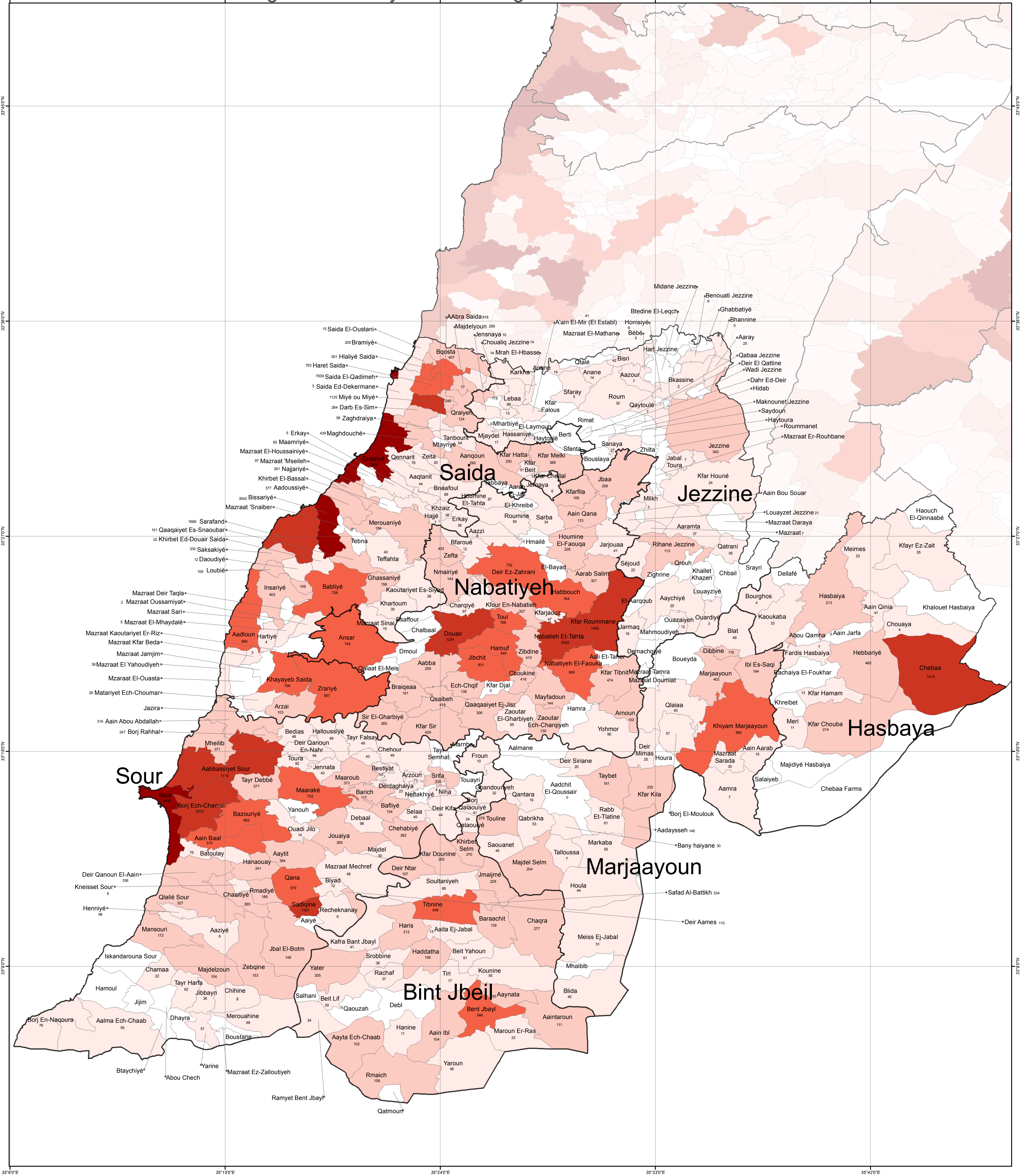


# SYRIA REFUGEE RESPONSE

## LEBANON South and El Nabatieh Governorates

Distribution of the Registered Syrian Refugees at Cadastral Level

As of 29 August, 2013



### Notes

The boundaries, names and designations used on this map do not imply official endorsement of the United Nations. All data used are the best available at the time of map production.

### Data Sources:

- Lebanese Border, Caza and Cadastral Boundaries: NPMPLT 2005.  
- Geographic Projection WGS 1984

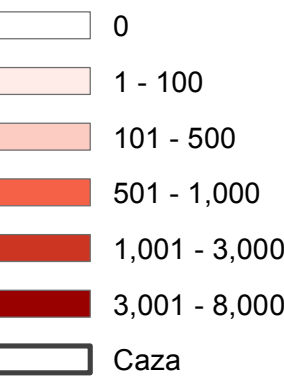
Registered Refugees Figures by UNHCR as of 29 August 2013.  
For more information contact Rana G. Ksaifi at [ksaifi@unhcr.org](mailto:ksaifi@unhcr.org)

GIS and Mapping by UNHCR. For Information and updates contact Wali Ahadi at [ahadi@unhcr.org](mailto:ahadi@unhcr.org)

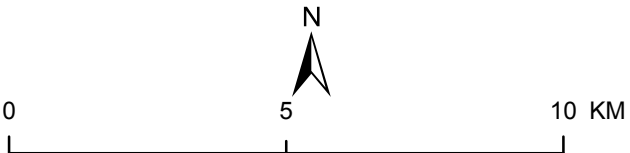
NPMPLT: National Physical Master Plan for the Lebanese Territory



### No. of Registered Syrian Refugees at the Cadastral Level



The No. indicates the registered refugees at the cadastral level



### LOCATION DIAGRAM

