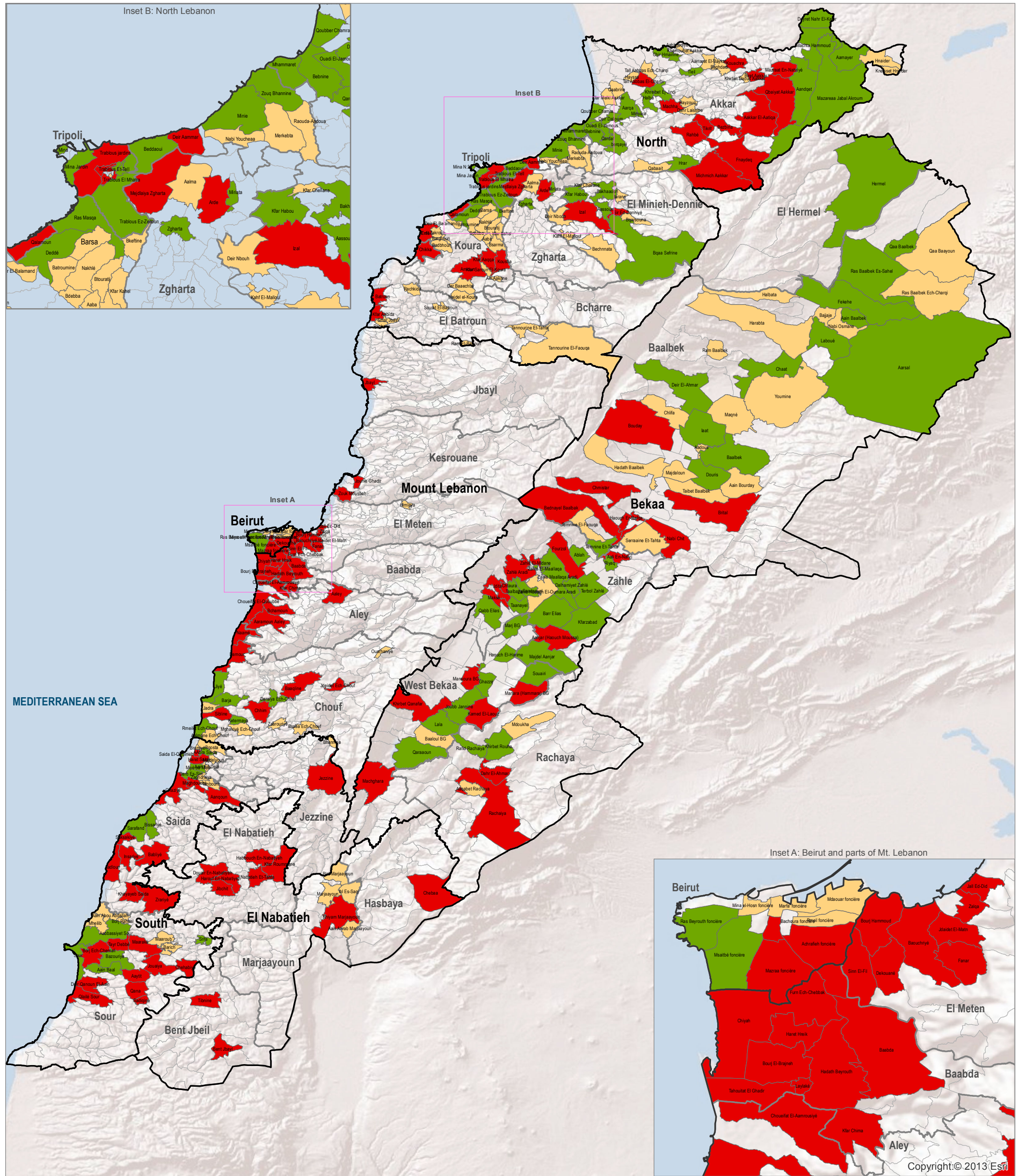


SYRIA REFUGEE RESPONSE

LEBANON WASH Sector Working Group

Implementation of Water and Sanitation Activities

January to September 2013



WASH Sector Working Group

UNHCR Samuel Gonzaga, gonzagas@unhcr.org
UNICEF David Adams, dadams@unicef.org

GIS and Mapping by UNHCR and UNICEF.
For more information and updates contact:
Wali Ahadi, ahadi@unhcr.org
Steller Makasi, smakasi@unhcr.org

Map Produced: 24 October 2013

UNHCR
The UN Refugee Agency

WASH Working Group
Lebanon

unicef

	Governorate		Most Vulnerable Population
	District		With Water and Sanitation Activities
	Cadastral		With No Water and Sanitation Activities
			Cadastral With Water & Sanitation Activities, but Not With Most Vulnerable Population

Vulnerable Population layer shows the 206 Cadastral across Lebanon that contains high percentage of refugees as well as high percentage of poor host community (85% of registered refugees and 67% of poor Lebanese respectively).

The boundaries, names, and designations used on this map do not imply official endorsement of the United Nations or UNHCR.

All data used were the best available at the time of map production.

Data Sources:

- UNHCR: Registered refugee location as of 19 September 2013.
- Poverty data is based on 2008 UNDP study with data collected in 2004.
- The WASH Sector Data is based on the September 5W Matrix collected by the WASH sector group