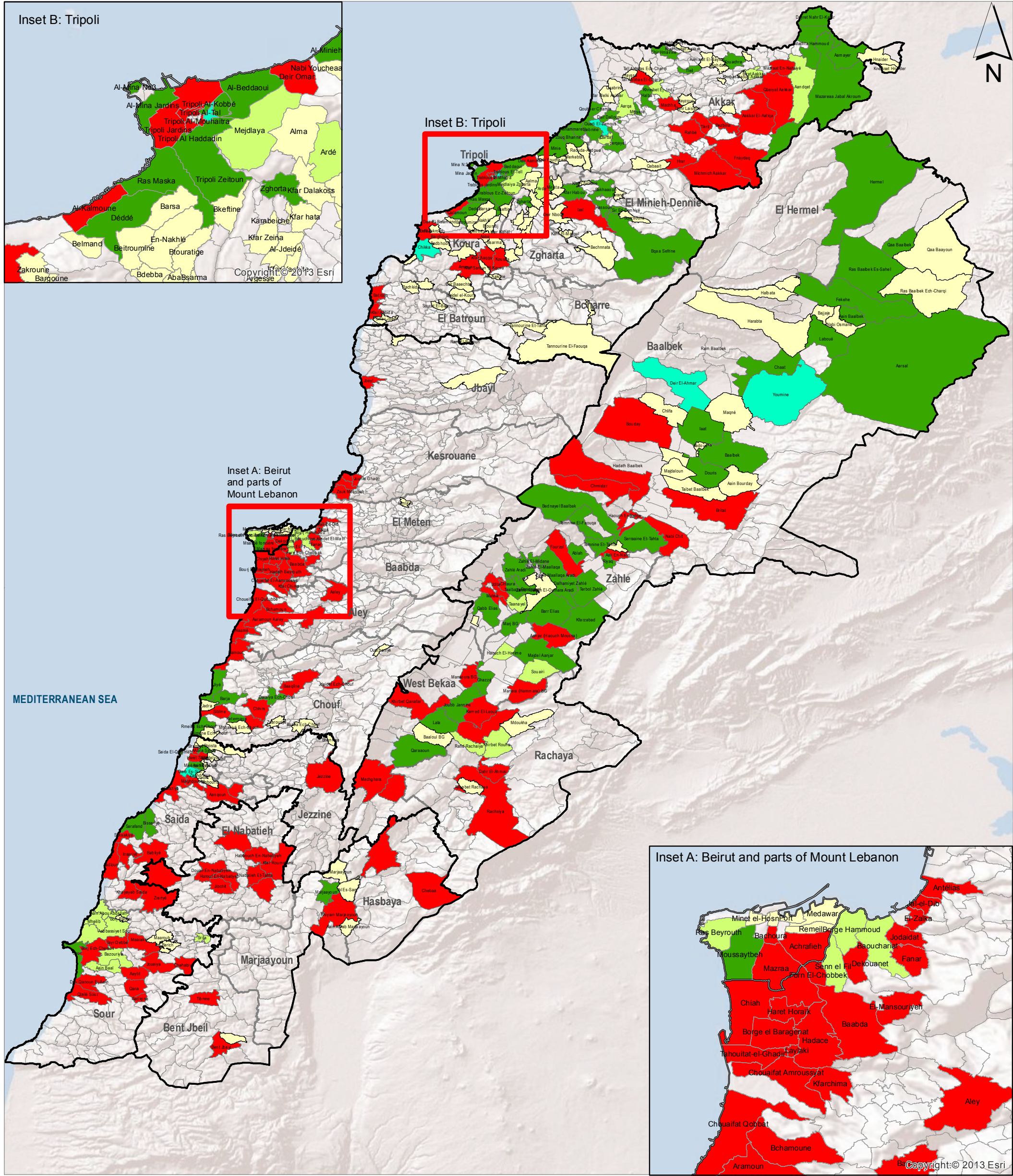


SYRIA REFUGEE RESPONSE

LEBANON WASH Sector Working Group

Implementation of Water and Sanitation Activities

January to November 2013



WASH Sector Working Group

UNHCR Samuel Gonzaga, gonzagas@unhcr.org
UNICEF David Adams, dadams@unicef.org
GIS and Mapping by UNHCR and UNICEF.
For more information and updates contact:
Aoife Long, along@unicef.org

Map Produced: 11 December 2013



- Cadastral with most Vulnerable Population**
- 225 Most Vulnerable Localities**
- With Water and Sanitation Activities
 - With Water Activities only
 - With Sanitation Activities only
 - With No Water and Sanitation Activities
- Cadastral outside most Vulnerable Population**
- with a Water or Sanitation response or both

Vulnerable Population layer shows the 225 Cadastral across Lebanon that contains high percentage of refugees as well as high percentage of poor host community (85% of registered refugees and 67% of poor Lebanese respectively).

The boundaries, names, and designations used on this map do not imply official endorsement of the United Nations or UNHCR.

All data used were the best available at the time of map production.

Data Sources:

- UNHCR: Registered refugee location as of 17 October 2013.
- Poverty data is based on 2008 UNDP study with data collected in 2004.
- The WASH Sector Data is based on the November 5W Matrix collected by the WASH sector group

Preferable print size A3