

Camp profile

Basirma Refugee Camp, Erbil, KR - Iraq

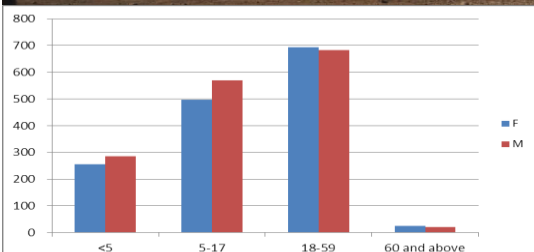
Camp opened: 26.08.2013

As of 29 Dec. 2013



Geographic Snapshot and Contextual Background

GPS coordinates:	44° 20' 28.084"E 36°29' 50.773"N
Region and State:	Shaqlaw, Erbil. KR - Iraq
Size of camp area:	150,000 m ²
Pattern in Population Change:	Hosting refugees who entered KR after the 15.8.2013 influx
Areas of Origin:	Majority is from Qamishli and Hasak in Syria.



Refugee Population

approximately
3,029
(Individuals)

Planned capacity:
4,580
(Individuals)



Needs Met	Analysis	Minimum Sectoral Data (standard)	Minimum Sectoral Data
	Health: There is a temporary PHC in the camp. Primary health care is provided through the temporary site.	<ul style="list-style-type: none"> ▶ Extent PoCs have access to primary health care. 1 health centre for 20,000 persons. 	<ul style="list-style-type: none"> ▶ 1 health post (permanent), 2 ambulances
	WASH: The sanitation is available in the camp.	<ul style="list-style-type: none"> ▶ Liters of water/person /day: 20 ▶ Persons per latrine: <20 ▶ Persons per shower: <20 	<ul style="list-style-type: none"> ▶ Liters of water/person /day: 144 ▶ Persons per latrine: 19 ▶ Persons per showers: 19
	Protection: Registration Level 1 is completed. Verifications and updates ongoing.	<ul style="list-style-type: none"> ▶ 100 % of PoC registered on individual basis . 	<ul style="list-style-type: none"> ▶ 100 % Population registered on family basis.
	Food: Adequate quality and quantity of food aid provided.	<ul style="list-style-type: none"> ▶ Extent food aid is appropriately distributed. ▶ Kilocalorie (Kcal)/person/day: 2,100 	<ul style="list-style-type: none"> ▶ Kilocalories person /day: 2,100
	CRIs: Refugees received CRI kits upon arrival in the camp including distribution of winterization kits.	<ul style="list-style-type: none"> ▶ 100% of households whose needs for basic and domestic items are met. 	<ul style="list-style-type: none"> ▶ 100 % of households whose needs for basic and domestic items are met.
	Shelter: Shelter and infrastructure established, improved and maintained.	<ul style="list-style-type: none"> ▶ Average camp area per person 30 sq m ▶ 100% of households living in adequate dwellings. 	<ul style="list-style-type: none"> ▶ Average camp area per person 37 sq m ▶ 100 % of households living in adequate dwellings.

Minimum Sectoral Data Key:



=standard met or exceeded



= standard not met

