

Camp profile

Arbat Temporary Refugee Camp, Suleimaniyah, KR - Iraq

Camp opened: 25.08.2013

As of 30 Jan. 2014



Geographic Snapshot and Contextual Background

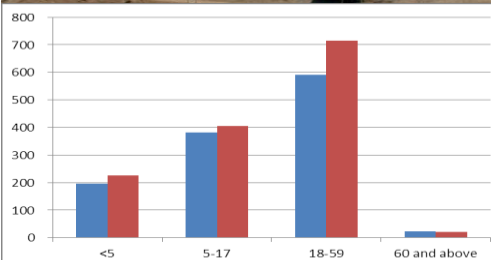
GPS coordinates: 45.56437482 35.40950474

Region and State: Sulaymaniyah. KR - Iraq

Size of camp area: 300,000 m²

Pattern in Population Change: Relocation from Arbat transit camp to Arbat Permanent Camp

Areas of Origin: Majority is from Qamishli, Syria.

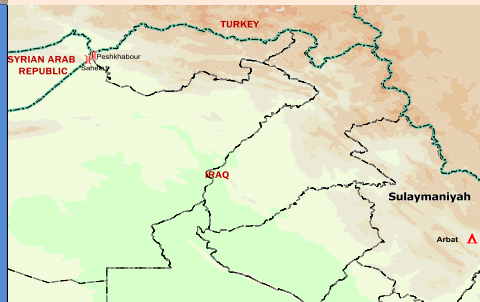


Age and gender break-down of the population as of 27 Jan. 2014

Refugee Population

approximately
2,703
(Individuals)

Planned capacity:
5,000
(Individuals)



Needs Met	Analysis	Minimum Sectoral Data (standard)	Minimum Sectoral Data
	Health: There is a temporary PHC in the camp for providing primary health care.	► Extent PoCs have access to primary health care. 1 health centre for 20,000 persons.	► 1 health post.
	WASH: The sanitation is available in the camp	► Liters of water/person /day: 20 ► Persons per latrine: <20 ► Persons per shower: <20	► Liters of water/person /day: 44.5 ► Persons per latrine: 20 ► Persons per showers: 20
	Protection: Registration Level 1 is completed.	► 100 % of PoC registered on individual basis.	► Population registered on family basis.
	Food: Adequate quality and quantity of food aid provided.	► Extent food aid is appropriately distributed. ► Kilocalorie (Kcal)/person/day: 2,100	► Kilocalories person /day: 2,100
	CRIs: Refugees received CRI kits upon arrival in the camp including distribution of winterization kits.	► 100% of households whose needs for basic and domestic items are met.	► 100 % of households whose needs for basic and domestic items are met.
	Shelter: Shelter and infrastructure established, improved and maintained.	► Average camp area per person 30 sq m ► 100% of households living in adequate dwellings.	► Average camp area per person 37.5 sq m ► 100 % of households living in adequate dwellings.

Minimum Sectoral Data Key:



=standard met or exceeded



= standard not met

