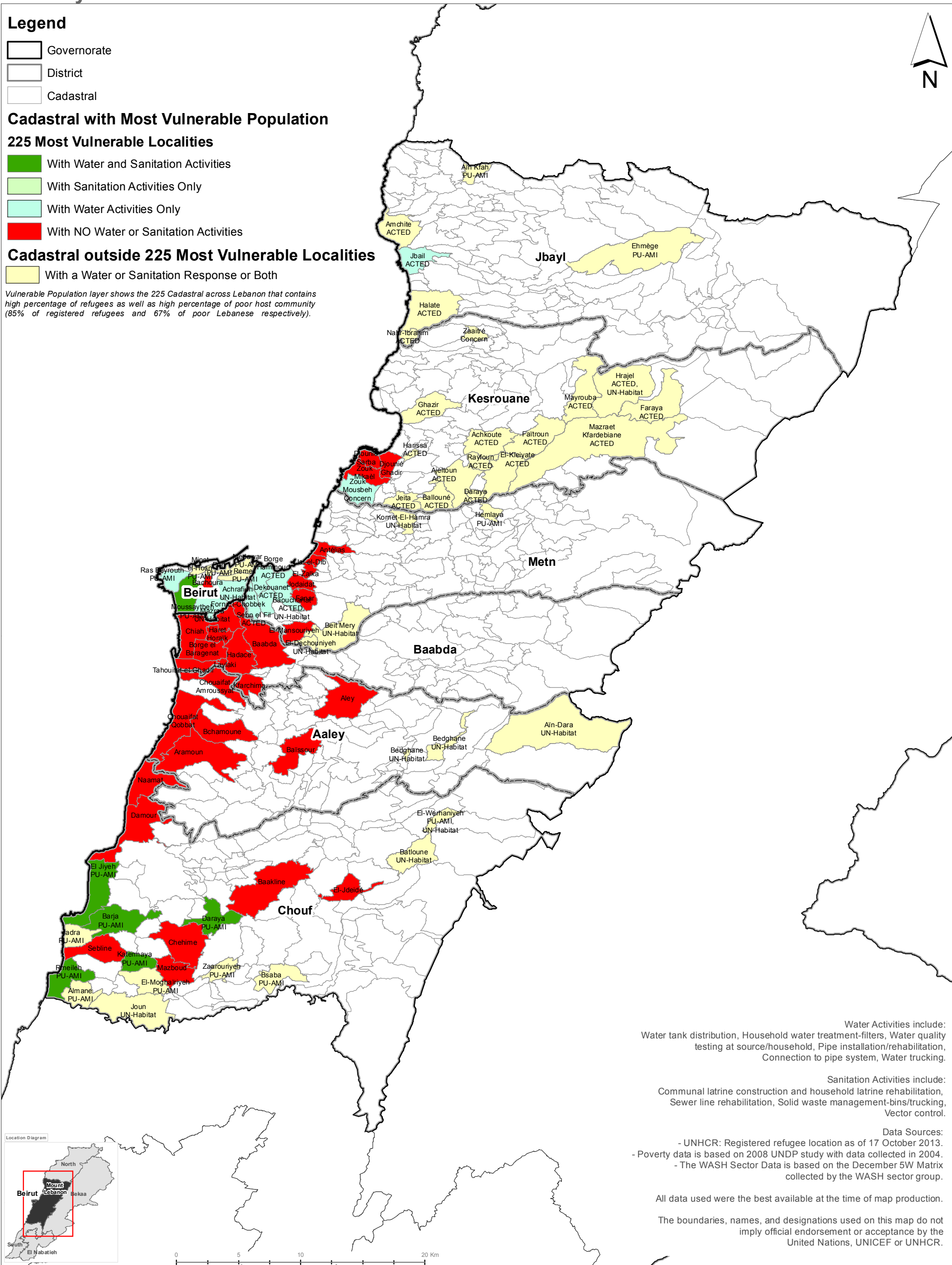


## January to December 2013



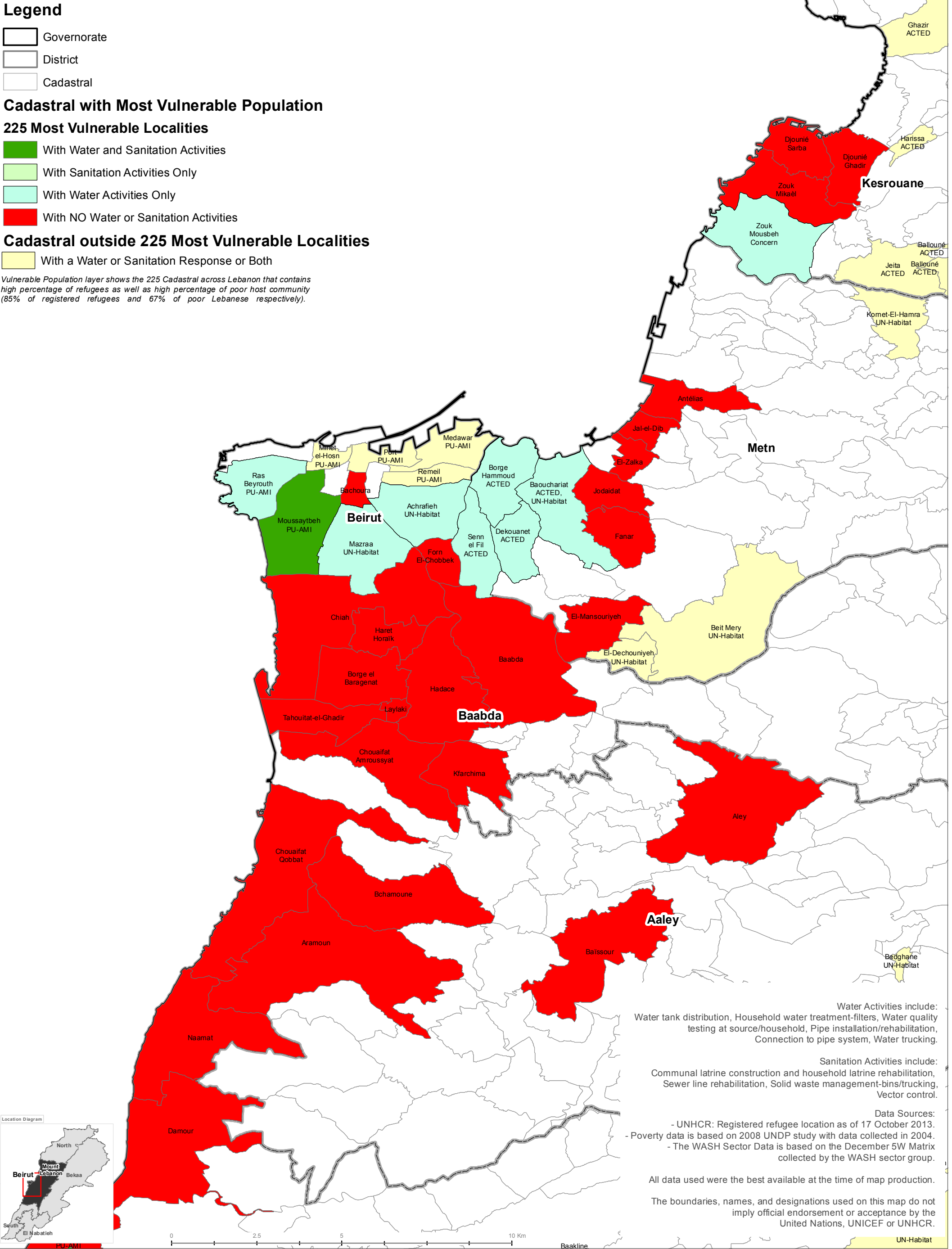
# SYRIA REFUGEE RESPONSE

## LEBANON Beirut and Mt. Lebanon Governorate - Map2

### WASH Sector Working Group

#### Implementation of Water and Sanitation Activities

#### January to December 2013



Water Activities include:  
Water tank distribution, Household water treatment-filters, Water quality testing at source/household, Pipe installation/rehabilitation, Connection to pipe system, Water trucking.

Sanitation Activities include:  
Communal latrine construction and household latrine rehabilitation, Sewer line rehabilitation, Solid waste management-bins/trucking, Vector control.

Data Sources:  
- UNHCR: Registered refugee location as of 17 October 2013.  
- Poverty data is based on 2008 UNDP study with data collected in 2004.  
- The WASH Sector Data is based on the December 5W Matrix collected by the WASH sector group.

All data used were the best available at the time of map production.

The boundaries, names, and designations used on this map do not imply official endorsement or acceptance by the United Nations, UNICEF or UNHCR.