

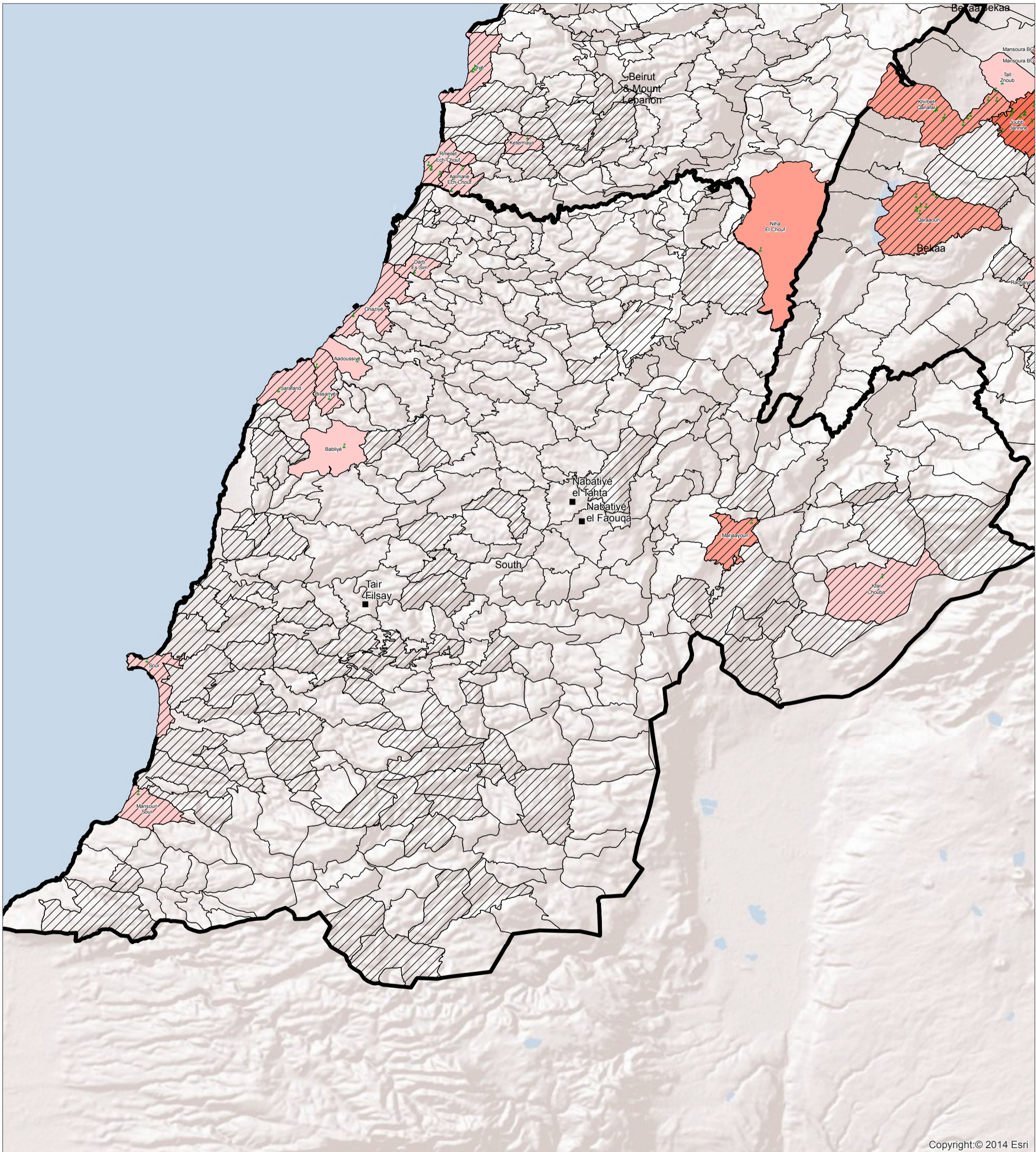
SYRIA REFUGEE RESPONSE

South WASH Sector Working Group Implementation of WASH Activities and ITS Density and Location



WASH Sector Working Group
GIS and Mapping by UNHCR and UNICEF
For more information and updates contact
William Lavell wlavell@unicef.org

Date: 5/5/2014



Copyright:© 2014 Esri

- ITS
- Municipalities
- WASH Presence
- # of Ind**
- 0 - 404
- 405 - 1171
- 1172 - 2524
- 2525 - 4006
- 4007 - 8137



0 1.5 3 6 9 12 Kilometers

Overview:

This map shows the locations of informal tent settlements and the # of persons in ITS per cadastral as well as WASH presence. Please see the legend for the symbology used.

Data Sources:

- The WASH Sector Data is based on Activity Info Reporting cumulative up to the end of March 2014.
- WASH presence is based on any WASH activity and not

-The boundaries, names, and designations used on this map do not imply official endorsement or acceptance by the United Nations, UNICEF or UNHCR.

WASH Activities:

Activities shown are based on the indicators from ActivityInfo

ITSDensity_South

Unicef_Div	District	Cadastarl	Local_Name	Nbr_Indiv	Nbr_Tents	Partners
South	Marjaayoun	Marjaayoun	Marjayoun 1	650.0	92.0	CISP, UNHABITAT
South	Hasbaiya	Kfar Chouba	Kfar Chouba	250.0	35.0	UNHABITAT
South	Saida	Bissariye	Baissariye	207.0	29.0	MC, PU-AMI, UNHABITAT, WVI
South	Sour	Sour	Tyre	200.0	28.0	CISP, NRCOXFAM, UNDP, UNHABITAT, UNRWA
South	Sour	Mansouri Sour	Mansouri	150.0	21.0	NRC, WVI
South	Saida	Ghaziye	Ez Zahrani	138.0	19.0	MC, PU-AMI
South	Saida	Aadoussiye	Aaddoussiye	120.0	17.0	
South	Saida	Sarafand	Sarafand	81.0	11.0	PU-AMI, WVI
South	Saida	Darb Es-Sim	Darb El Sim	46.0	6.0	PU-AMI, UNDP, UNHABITAT
South	Saida	Babliye	Babliyah	0.0	0.0	