

SYRIA REFUGEE RESPONSE

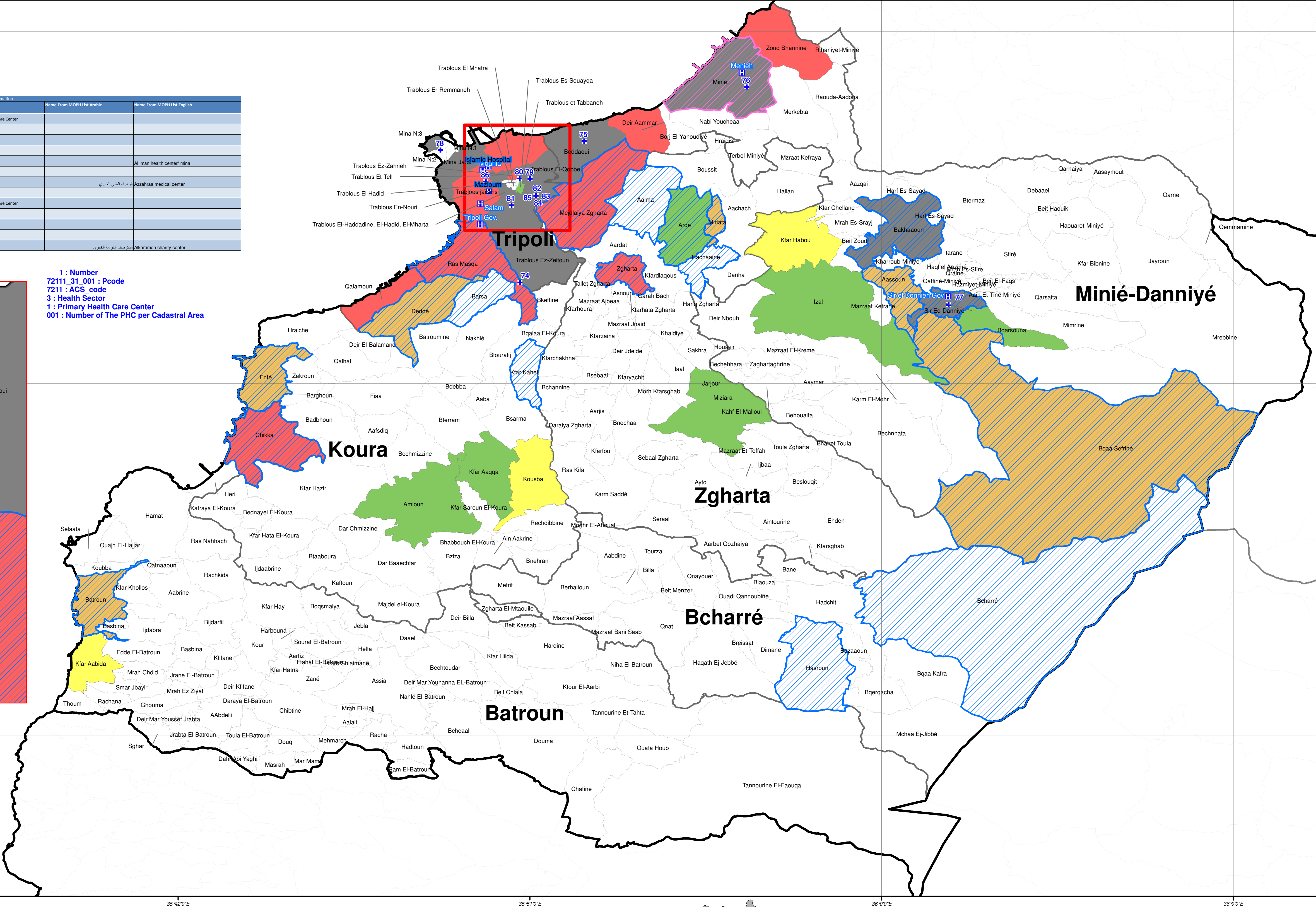
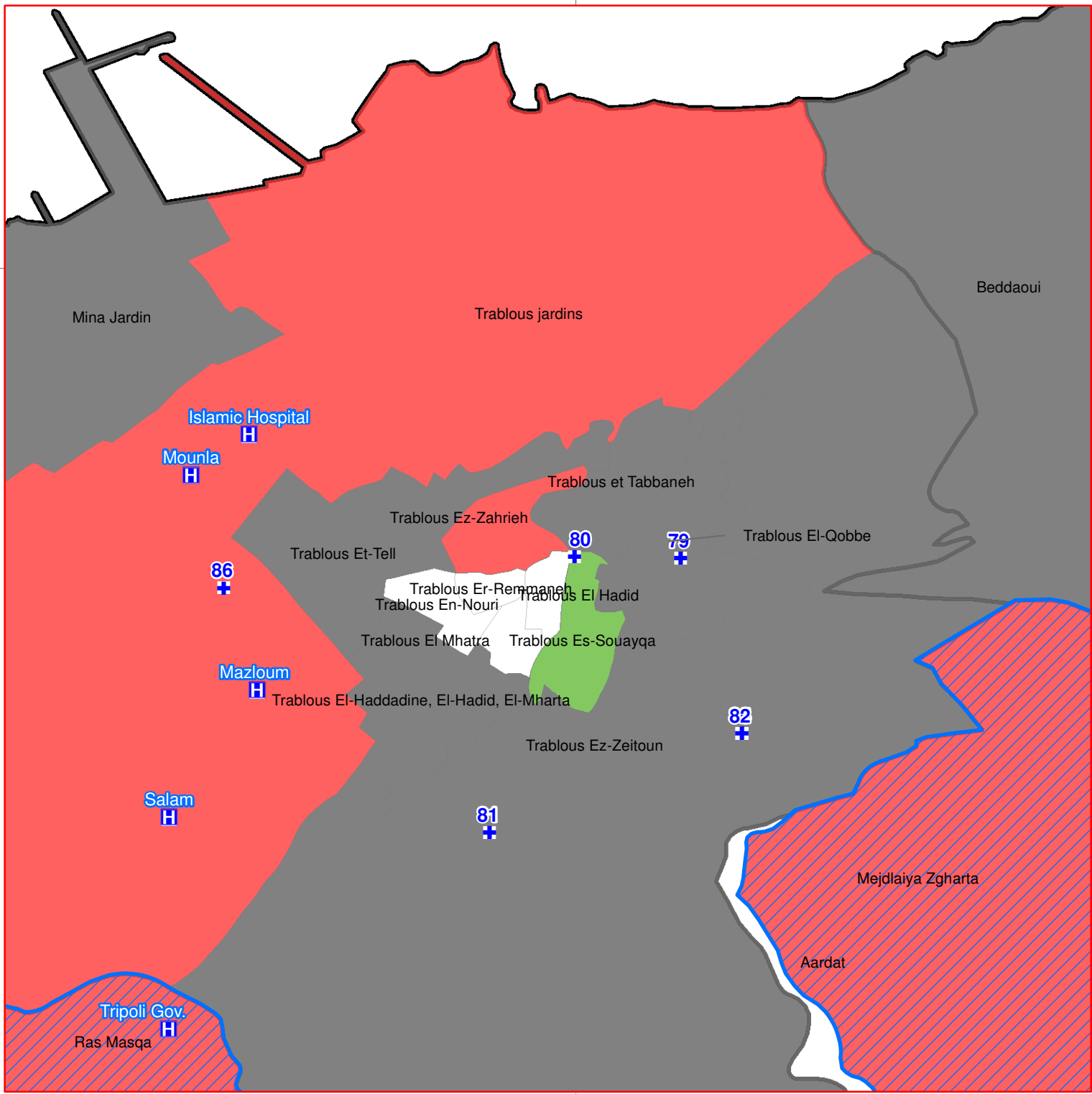
LEBANON North Governorate, Tripoli, Batroun, Bcharreh, El Koura, El Minieh-Dennieh, Zgharta Districts (T+5)

Reaching the Most Vulnerable Localities in Lebanon, Health centers PHC,SHC and MMU



Number	P_Code	Longitude_E	Latitude_N	ACS_CODE	Governorate	District	Cadastral Name	Village	Name of Health Facility	Name From MOPN List Arabic	Name From MOPN List English
74	32185_31_001	35.845791	34.39315	32185	North	El Koura	Ras Masqa	Dahr el Ah - Koura	CARITAS Lebanon Primary Health Care Center		
75	37231_31_001	35.87113889	34.45336389	37231	North	El Minieh-Dennieh	Beddaoui	El Beddaoui	Nahda Clinic		
76	37271_31_001	35.94251111	34.47648889	37271	North	El Minieh-Dennieh	Minieh	El Minieh	Al Nahda Association		
77	37311_31_001	36.02861111	34.38361111	37311	North	El Minieh-Dennieh	Sir Ed-Danniyeh	Sir Ed-Danniyeh	Al Imran PHC		
78	31176_31_001	35.81185093	34.44955856	31176	North	Tripoli	Mina N.2	El Mina	Al Imran Medical Center		Al Imran health center/ mina
79	31151_31_001	35.850097	34.437361	31151	North	Tripoli	Trablous El-Qobbe	Qoubbe	Qoubbe Medical center		
80	31145_31_001	35.84570886	34.43741857	31145	North	Tripoli	Trablous Es-Souayqa	Tripoli	Al Zahraa Clinic - Jabal Mohsen	العيادة الطبية العصرية	Azzahraa medical center
81	31111_31_001	35.842192	34.426014	31111	North	Tripoli	Trablous Ez-Zeitoun	Abou Samra	Al Bachaer PHC		
82	31111_31_003	35.85203121	34.43011884	31111	North	Tripoli	Trablous Ez-Zeitoun	Tripoli	CARITAS Lebanon Primary Health Care Center		
83	31131_31_004	35.85263121	34.43011884	31111	North	Tripoli	Trablous Ez-Zeitoun	Tripoli	Dar El Zahraa Hospital - Abu Samra		
84	31131_31_005	35.85263121	34.43011884	31111	North	Tripoli	Trablous Ez-Zeitoun	Tripoli	Al Dawas Clinic - Tabbaneh		
85	31111_31_006	35.85263121	34.43011884	31111	North	Tripoli	Trablous Ez-Zeitoun	Trablous Ez-Zeitoun	Diagnostic Facilities		
86	31146_31_001	35.83118907	34.45613229	31166	North	Tripoli	Trablous jardins	Tripoli	Karamneh PHC	مركز الرعاية الصحية	Alkaramneh charity center

1 : Number
72111_31_001 : Pcode
7211 : ACS_code
3 : Health Sector
1 : Primary Health Care Center
001 : Number of The PHC per Cadastral Area



Legend

+

Humanitarian Primary Health Care Centers (PHC)

+

Secondary Health Care Centers

Mobile Medical Unit (MMU_code), Organization

MMU_001, IMC + Renee Mouawad Foundation

MMU_002, IMC + AL Nahda Association

36 / 242 Most Vulnerable Localities in Lebanon

Most Vulnerable (48% SYR Refugees / 39% Leb Por)

2nd Most Vulnerable (18% SYR Refugees / 11% Leb Por)

3rd Most Vulnerable (9% SYR Refugees / 6% Leb Por)

4th Most Vulnerable (6% SYR Refugees / 5% Leb Por)

5th Most Vulnerable (4% SYR Refugees / 5% Leb Por)

Governorate

Caza

Notes
The boundaries, names and designations used on this map do not imply official endorsement of the United Nations. All data used are the best available at the time of map production.

Data Sources:
- Lebanese Border, Caza and Cadastral Boundaries: NPMPLT 2005.
- Geographic Projection WGS 1984

Calculation of the Most Vulnerable Localities was based on the following data sources:
1-Cadastral Boundary Shapefile which includes the 3rd admin level population distribution. The source of the shapefile is the CDR (Council for Development and reconstruction)
2-UNDP study of 2008. It states that 28.55% of the Lebanese population is estimated to be living under 4USD/capita/day based on data collected in 2004.
The poverty estimates from this study gives break down on "combined Caza" level (admin level 2), this is assumed to be same for all the municipalities under the caza boundaries.
3- The refugee population distribution.This data is frequently by UNHCR registration unit. The top quintile of the vulnerability mapping includes 36 from 242 localities
4- Health data: Ministry of Public Health-Lebanon, Health 3w Matrix

GIS and Mapping by UNHCR. For Information and updates
contact Jad Ghosn: ghosn@unhcr.org
Maroun Sader: sader@unhcr.org
Map Production Date: 14 May 2014

