

SYRIA REFUGEE RESPONSE

Tripoli + 5

WASH Sector Working Group

WASH Implementation Lebanon

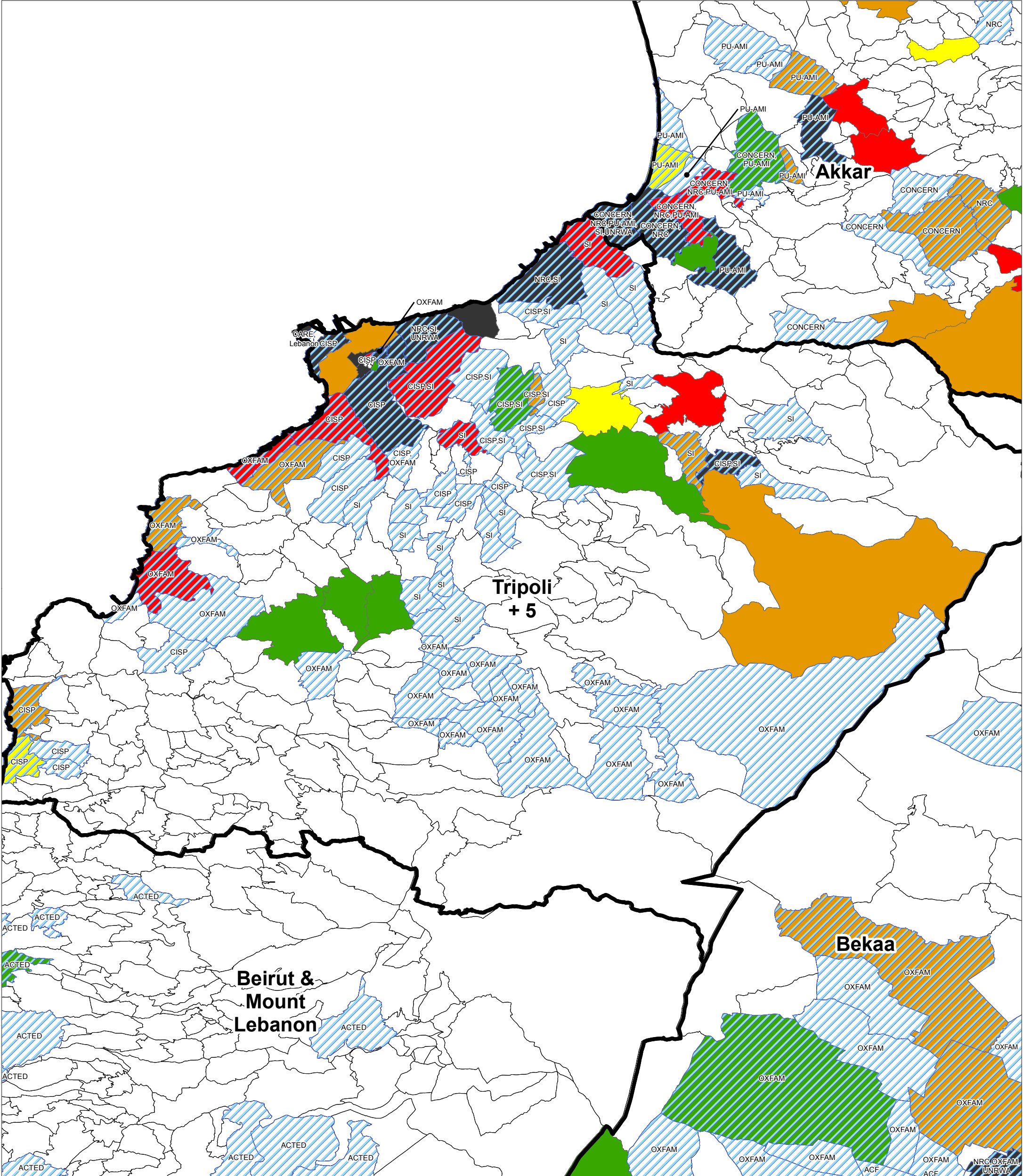


WASH Sector Working Group

GIS and Mapping by UNHCR and UNICEF

For more information and updates contact William Lavell [wlavell@unicef.org](mailto:wlavell@unicef.org)

Date: 5/28/2014



Water

**Most Vulnerable**

**225 Most Vulnerable Localities**

Most Vulnerable (50% Syr / 39% Leb)

2nd Most Vulnerable (17% Syr / 11% Leb)

3rd Most Vulnerable (9% Syr / 6% Leb)

4th Most Vulnerable (6% Syr / 5% Leb)

5th Most Vulnerable (4% Syr / 5% Leb)

012468

Kilometers

N

Overview:  
This map shows WASH Activities based on reporting from ActivityInfo April data

Data Sources:  
- The WASH Sector Data is based on Activity Info Reporting. All data used were the best available at the time of map production. The boundaries, names, and designations used on this map do not imply official endorsement or acceptance by the United Nations, UNICEF or UNHCR.

WASH Activities:  
Activities shown are based on the indicators from ActivityInfo

For more information please contact William Lavell [Wlavell@unicef.org](mailto:Wlavell@unicef.org)