

FACTSHEET

FORTNIGHTLY WASH MONITORING

AL AZRAQ REFUGEE CAMP, JORDAN – VILLAGES 3 AND 6

3 – 7 AUGUST 2014



This factsheet provides an overview of the camp's **WASH centres and tap stands in Village 3 [all blocks] and Village 6 [blocks 1-10]** to help facilitate the design and efficacy of interventions. The data was collected by REACH during the week of **3-7 August 2014**, during which REACH enumerators assessed **1491 WASH centres and 30 tap stands** in total: 905 WASH centres (99%) and 12 (100%) of tap stands in Village 3, as well as 586 WASH centres (99%) and 18 (100%) tap stands in Village 6. To request data at the level of individual WASH centres and tap stands, or for more information regarding the methodology, please contact: philip.bato@reach-initiative.org.

1. WASH CENTRES

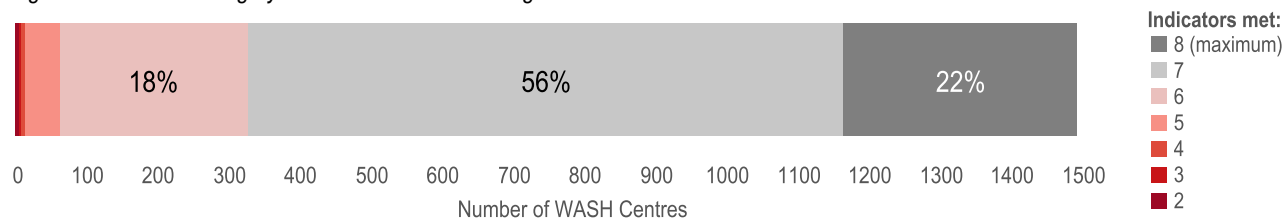
1.1 STRUCTURAL INTEGRITY

The following structural integrity indicators were assessed:

	Village 3	Village 6	TOTAL
1. Doors securely attached to both shower and toilet stalls	99%	98%	99%
2. Door handles attached to both shower and toilet doors	98%	92%	96%
3. Locks present on inside of both shower and toilet stalls	97%	94%	96%
4. Locks present on outside of both shower and toilet stalls	98%	95%	97%
5. No holes in the roof of the WASH structure (over 0.5cm)	94%	98%	96%
6. No holes in the wall of the WASH structure (over 0.5cm)	82%	92%	86%
7. Ventilation pipe is present and fully intact	91%	95%	92%
8. Desludging cap is present on septic tank and fully intact	39%	23%	33%

- **78% of WASH centres met all or 7 out of 8 structural integrity indicators.** In total, 22% of WASH centres were fully intact.

Figure 1: Structural integrity of WASH centres in Villages 4 and 6



- The 3 lowest-scoring indicators were **missing or broken desludging caps** (67% of all WCs), **holes in the walls** (14% of all WCs) and **missing or broken ventilation pipes** (8% of all WCs).
- **71% of all desludging caps were removed from the septic tanks in Village 6**, while 20% of the properly installed caps were broken. In Village 3, 45% of all desludging caps were missing, while 28% of the remaining caps were broken.
- **The ventilation pipe was removed in 64 WCs (7%) in Village 3 and 20 WCs (3%) in Village 6.**

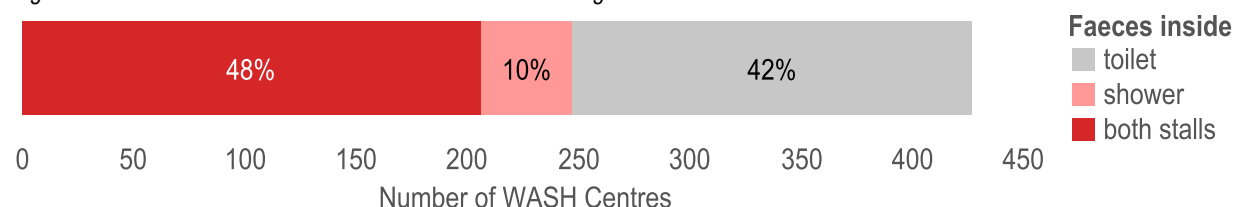
1.2 HYGIENE

The following hygiene indicators were assessed:

	Village 3	Village 6	TOTAL
1. No faeces inside both WC stalls	71%	71%	71%
2. No faeces outside the WASH centre (within 5m radius)	81%	83%	82%
3. No rubbish inside both stalls	68%	79%	72%
4. No standing water outside both stalls (within 5m radius)	97%	97%	97%

- 51% of WASH centres met all hygiene indicators, while 80% WCs met 3 or all indicators.
- **In 554 WASH centres (37%) faeces were found in shower stalls, toilet stalls outside of the squat pan or outside the stalls.** [See Maps 1 and 2]
- **Faeces were found outside 268 WCs (18%) in Villages 3 and 6**, indicating open defecation is practiced in the camp. [See Maps 3 and 4]

Figure 3: Prevalence of faeces inside WASH centres of Villages 3 and 6



- In 14% of all WCs, rubbish was found in both shower stalls and toilet stalls. In addition, in 7% of WCs rubbish was found inside the toilet stall only, and in 7% the shower stall only.

1.3 CHILD-FRIENDLY AND DISABLED ACCESS

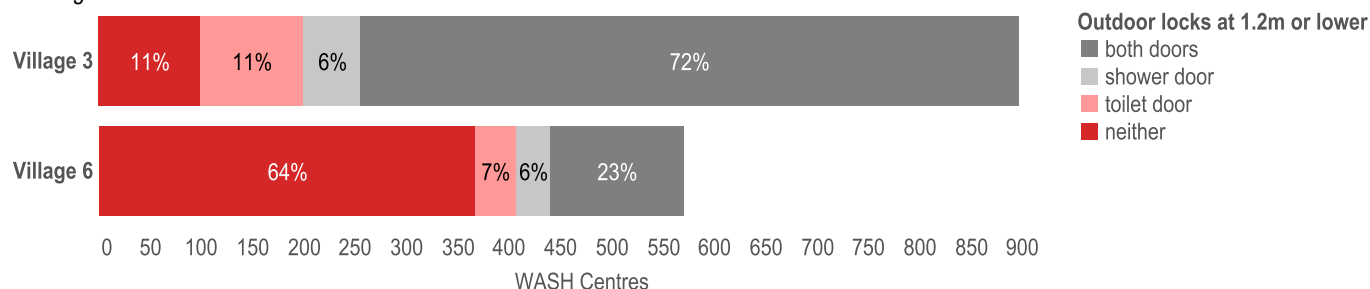
The following child-friendly access indicators were assessed:

	Village 3	Village 6	TOTAL
1. Door handles at 1.2m or lower on both doors ¹	15%	4%	11%
2. Inside locks at 1.2m or lower on both doors	96%	94%	96%
3. Outside locks at 1.2m or lower on both doors	72%	23%	52%

- **4% of all door handles in Village 6, and 15% of all door handles in Village 3 were placed at 1.2m or lower on both doors.**
- The lack of child-friendly door handles can be mitigated by the outside locks, which are the lowest handle on WCs and therefore most easily accessible to children. In Village 3, 72% of WCs had outdoor locks at 1.2m or lower. However, in Village 6, **64% of all WCs did not have outside locks placed at 1.2m or lower on both doors.** [See Maps 5 and 6]

¹ In most cases the outside door handles and locks were placed at 1.2m from the height of the concrete slab on which the WASH super-structure sits. However, this slab is often not big enough to step up onto when the door is shut, and is in most cases at a height above the ground. This makes the handles and locks difficult to reach for children.

Figure 4: WASH centres with door handles and outside locks at 1.2m or lower



Two additional access indicators were measured:

	Village 3	Village 6	TOTAL
1. Both WC doors are not privately locked	95%	94%	94%
2. A WASH Centre has been designed for disabled persons and has a finished access ramp	15%	8%	12%

2. TAPSTANDS

2.1 STRUCTURAL INTEGRITY

These structural indicators were assessed at the tapstand level:

	Village 3	Village 6	TOTAL
1. All 4 taps were present at the tapstand	100%	100%	100%
2. All taps at the tapstand provide water when turned on (during operational hours)	81%	83%	82%
3. All taps at the tapstand have handles	67%	89%	72%
4. All taps at the tapstand have anti-theft guards	100%	100%	100%
5. The concrete slabs of all tap stands are in decent (functional) or good order	100%	100%	100%

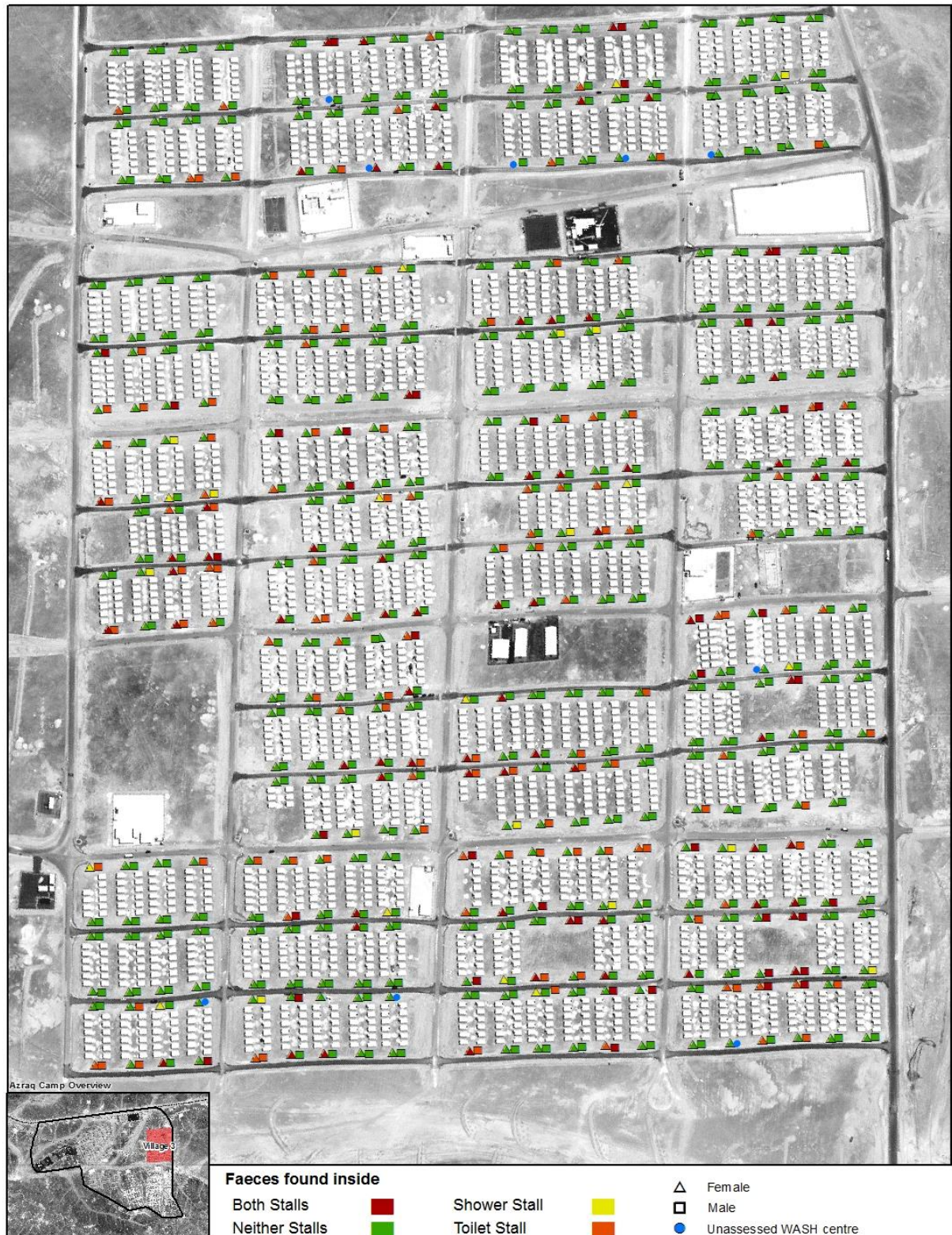
- **All taps were present and protected by an anti-theft guard.**
- **82% of all taps provided water when turned on** (three tap stands were out of water at 4pm – the time when they were assessed).
- In Village 3, two tapstands were missing 3 handles and two tapstands were missing 2 handles each. In Village 6, one tap handle was missing in total. [See Maps 7 and 8]

2.2 OTHER

	Village 3	Village 6	TOTAL
1. No faeces within 10m of the tapstand	83%	100%	90%
2. No private hoses are connected to the tapstand	100%	89%	93%

- **Faeces were found at three tapstands (17%) in Village 3.**
- A private hose was connected to an individual tap (1 out of 4) at 2 tapstands in Village 6. These hoses led to communal plots, not individual caravans. [See Map 8]

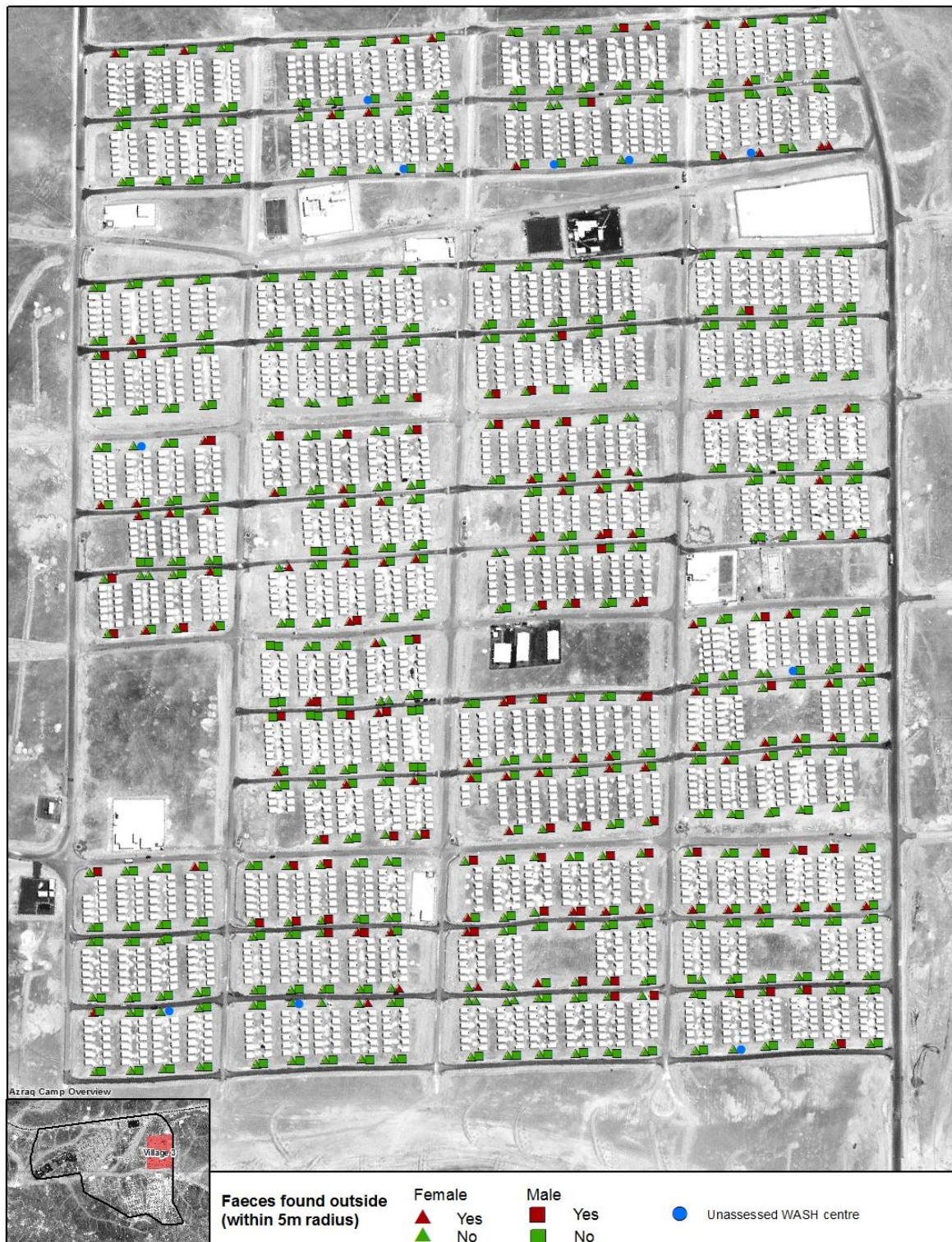
Map 1: Faeces found inside WASH centres in Village 3



Map 2: Faeces found inside WASH centres in Village 6



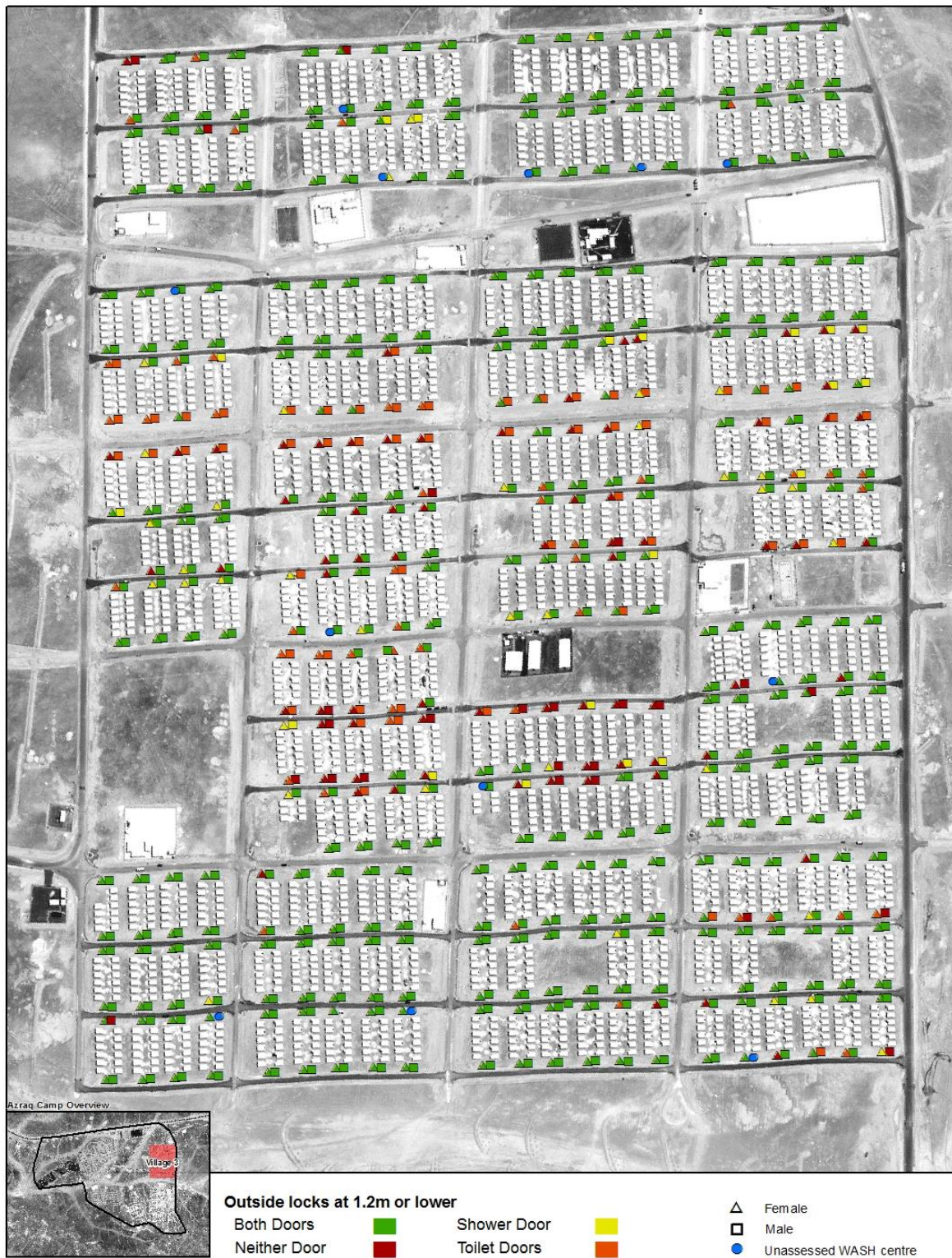
Map 3: Faeces found outside WASH centres in Village 3



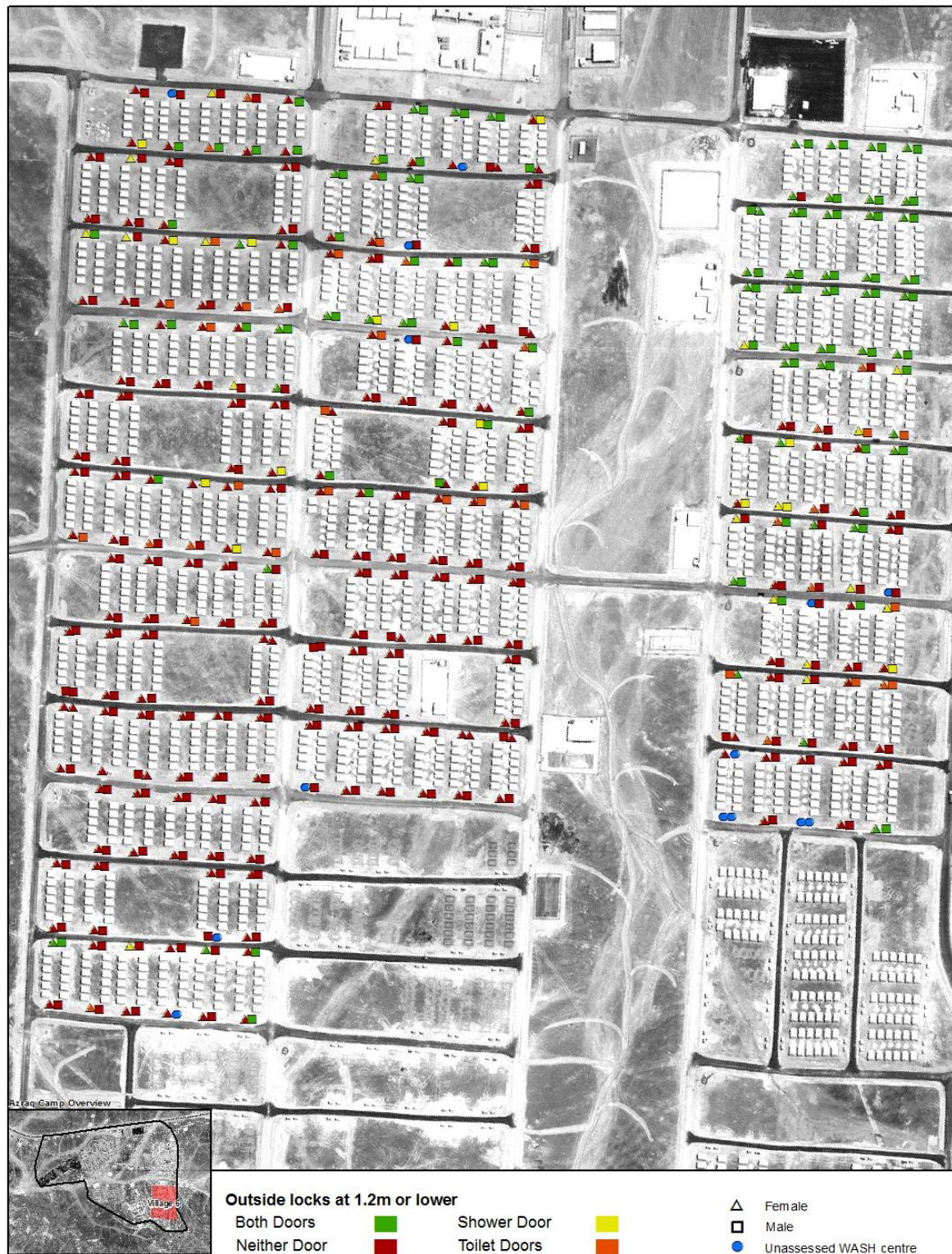
Map 4: Faeces found outside WASH centres in Village 6



Map 5: Outside locks at the height of 1.2m from the ground or lower in Village 3



Map 6: Outside locks at the height of 1.2m from the ground or lower in Village 6



Map 7: Missing tapstand handles in Village 3



Map 8: Missing tapstand handles and private connections in Village 6



About REACH

REACH is a joint initiative of two international NGOs - ACTED and IMPACT Initiatives - and the UN Operational Satellite Applications Programme (UNOSAT). REACH was created in 2010 to facilitate the development of information tools and products that enhance the capacity of aid actors to make evidence-based decisions in emergency, recovery and development contexts. All REACH activities are conducted in support to and within the framework of inter-agency aid coordination mechanisms.

For more information visit: www.reach-initiative.org and follow us @REACH_info