



KEY ACHIEVEMENT OF THE MONTH

More than **870,000** refugees and vulnerable host members received food assistance

HIGHLIGHTS:

Going into the second half of 2014, food security assistance programmes continued in July. Refugees continue to enter Lebanon from Syria. WFP and its co-operating partners reached some 791,522 Syrian refugees with the E-card. 17,189 newly arrived refugees were assisted with food parcels, to meet their immediate nutritional requirements. Through the E-card, USD 23,7 million were injected into the Lebanese economy in July alone. Other food security sector partners reached 64,582 vulnerable individuals (including an additional 2,478 new beneficiaries) among the four different caseloads, additionally injecting a further US\$1,2 million into the Lebanese economy. Although assistance was provided through various modalities, the electronic card (e-card) remained the dominant means of reaching the refugees, accounting for over 90% of the assistance delivery modality. Of note is the fact that during the Aarsal clashes, WFP e-cards continued to be used by beneficiaries, regardless of humanitarian aid inaccessibility due to security reasons.

The FAO/Ministry of Agriculture spearheaded livestock vaccination programme has so far reached over 760,740 livestock across the country. In addition 4,409 vulnerable Lebanese and 820 Syrian refugees were assisted with concentrate feed across the country.

During July, FAO initiated a perception survey to evaluate the impact of the vaccination campaign on the animal health in the country.



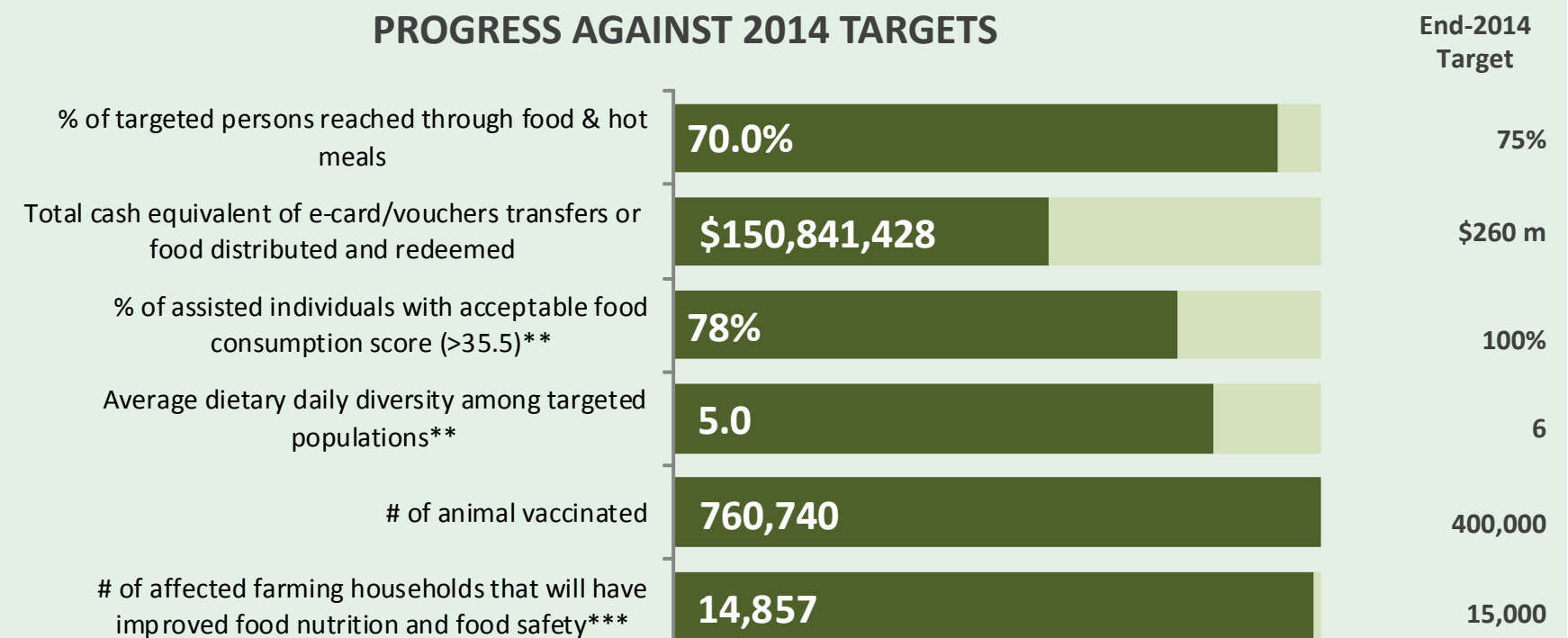
NEEDS ANALYSIS:

In August, the food security members will continue providing food assistance to meet the kilo-calorific requirements of vulnerable Syrian refugees and other vulnerable populations in need. A projected 950,000 refugees and other populations of concern will be reached with food assistance. Most assistance will primarily be provided via e-card or ATM cash transfer modalities, while newly arrived refugees will receive a once-off food parcel.

Food Sector members continue to explore effective ways of meeting increasing requirements with limited funding. Discussions on this will become intensive and urgent in August and September.

FAO started the preparation for the launching of the Food Security and Livelihoods survey to be implemented in collaboration with REACH/ACTED and several other stakeholders, mainly the Ministry of Agriculture.

PROGRESS AGAINST 2014 TARGETS



** Indicators are reported on a quarterly basis - *** Target changed and achievements reported for first time since beginning of 2014.

Source: figures reported above reflect the information reported to Sector Coordinators by Partners participating in Working Groups

Leading Agency: WFP - Naison CHAKATVA - naison.chakatsva@wfp.org
Reporting Agencies:

