



KEY ACHIEVEMENT OF THE MONTH

912,520 refugees and vulnerable host members received food assistance.

HIGHLIGHTS:

In September, WFP and its cooperating partners reached some 855,570 Syrian refugees with the E-card. 17,501 newly arrived refugees were assisted with food parcels. Through the E-card, WFP injected an additional US\$25.6 million into the Lebanese economy. Other food security sector partners reached some 39,449 vulnerable individuals among the four different caseloads, in the process injecting a further US\$1.26 million into the Lebanese economy. The e-card remains the modality for delivering food assistance to the refugees. The sporadic nature of hostilities in and around Aarsal meant that the e-card was one of the most reliable and consistently effective ways of reaching beneficiaries with humanitarian assistance. Otherwise, frequent accessibility challenges were interrupting the delivery of other forms of aid.

The FAO, in partnership with REACH, initiated a country-wide food security and livelihood assessment. This assessment is mainly focused on host communities but will include some refugees residing in the host communities as well. There were no changes to the number of livestock reached during the joint FAO/Ministry of Agriculture national livestock vaccination programme.



WFP e-card programme reaches some 855,570 Syrian refugees

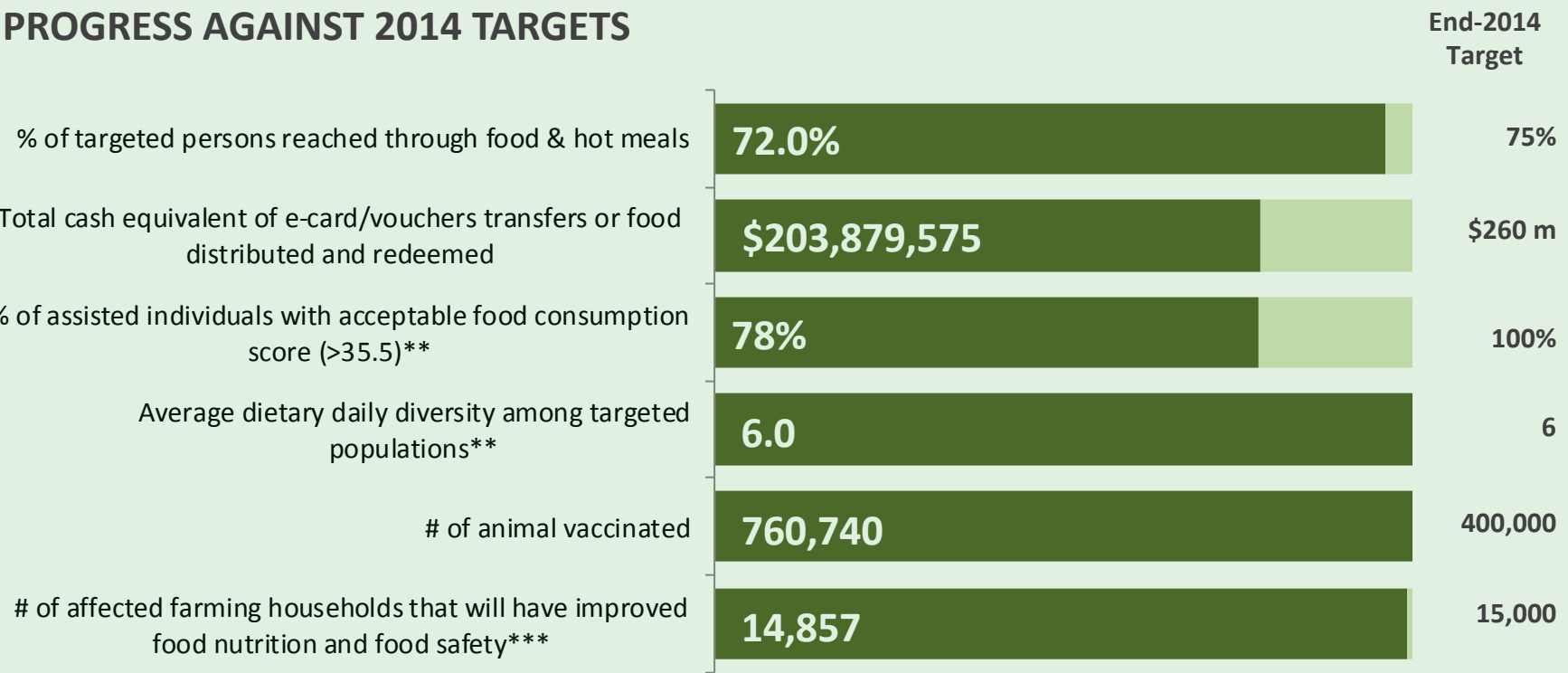
NEEDS ANALYSIS:

Food assistance is still crucial to sustain vulnerable groups in the country. This is evidenced by the percentage of households with an improvement of food consumption scores to some 76% , compared to the pre-assistance baseline of 49%.

Plans for October include reaching out to some 1,125,000 Syrian refugees. WFP and MoSA are set to start delivering food assistance to some 27,700 extremely poor Lebanese individuals registered under the National Poverty Targeting Programme (NPTP).

In October, the Food Security sector will finalise the strategic plan for the 2015-16 3RP. This strategy will be based on the sustainability of current targeting and the incorporation of more resilience/stabilisation interventions to bring equity among the different needy population groups. The government of Lebanon is expected to play a more prominent role in the 2015-16 response.

PROGRESS AGAINST 2014 TARGETS



** Indicators are reported on a quarterly basis - *** Target changed and achievements reported since July 2014.

Source: figures reported above reflect the information reported to Sector Coordinators by Partners participating in Working Groups

Leading Agency: WFP - Naison CHAKATVA - naison.chakatsva@wfp.org
Reporting Agencies:

