

SYRIA REFUGEE RESPONSE
LEBANON South and El Nabatieh Governorate
Child Protection in Emergencies Working Group
Implementation of Child Protection Activities January to September 2014
WG Members carrying out Psychosocial Support Activities with Children



Child Protection in Emergencies Working Group
UNHCR Elsa Laurin, laurin@unhcr.org
UNICEF Layal Sarrouh, lsarrouh@unicef.org
FIELD CO-ORDINATOR
Irene Van Horssen, vanhorss@unhcr.org

Data Sources:
- The Child Protection Sector Data is based on the Activity Info Reporting.

All data used were the best available at the time of map production.

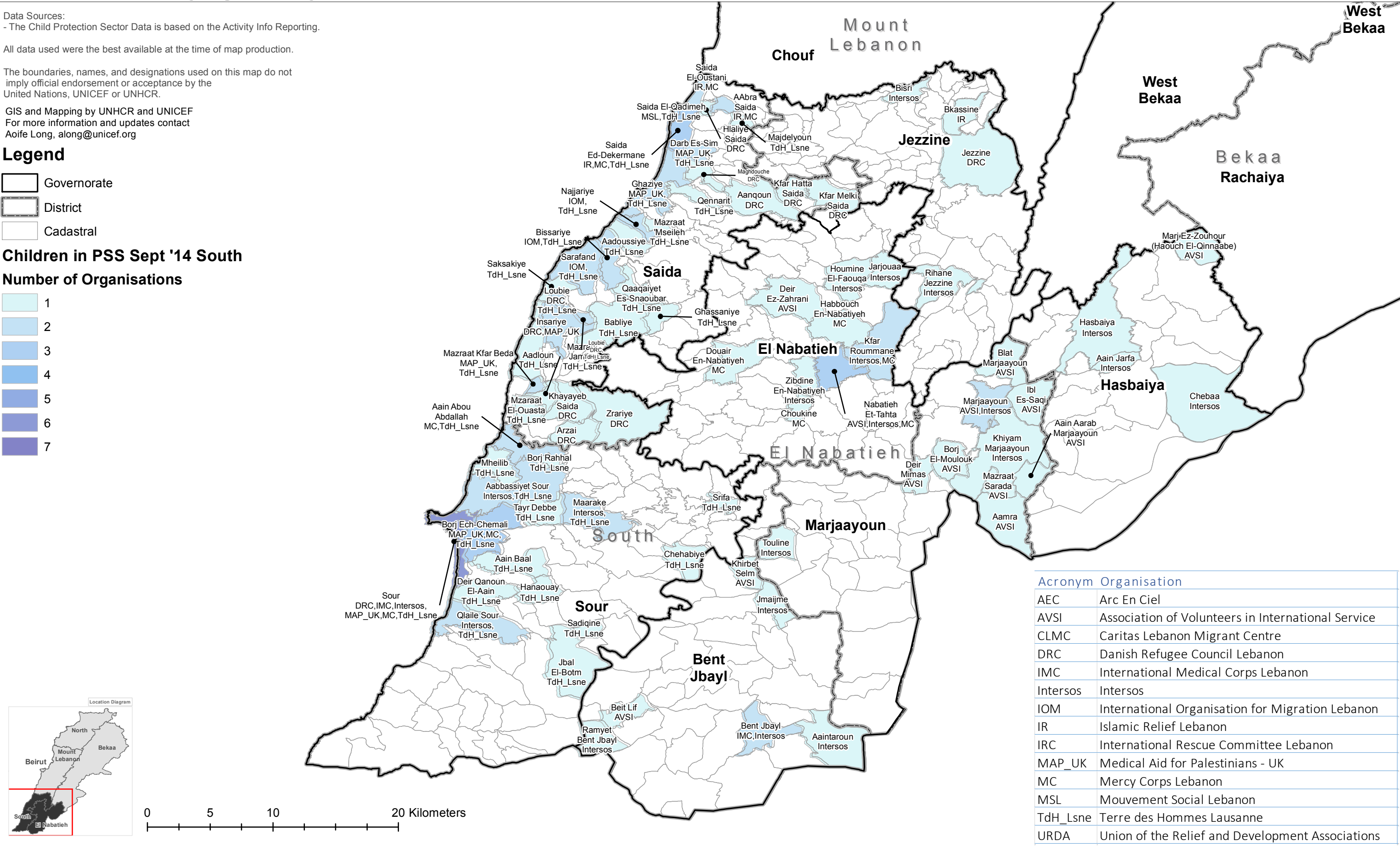
The boundaries, names, and designations used on this map do not imply official endorsement or acceptance by the United Nations, UNICEF or UNHCR.

GIS and Mapping by UNHCR and UNICEF
For more information and updates contact
Aoife Long, along@unicef.org

Legend

- Governorate
- District
- Cadastral

Children in PSS Sept '14 South
Number of Organisations



| Acronym | Organisation |
|----------|--|
| AEC | Arc En Ciel |
| AVSI | Association of Volunteers in International Service |
| CLMC | Caritas Lebanon Migrant Centre |
| DRC | Danish Refugee Council Lebanon |
| IMC | International Medical Corps Lebanon |
| Intersos | Intersos |
| IOM | International Organisation for Migration Lebanon |
| IR | Islamic Relief Lebanon |
| IRC | International Rescue Committee Lebanon |
| MAP_UK | Medical Aid for Palestinians - UK |
| MC | Mercy Corps Lebanon |
| MSL | Mouvement Social Lebanon |
| TdH_Lsne | Terre des Hommes Lausanne |
| URDA | Union of the Relief and Development Associations |