

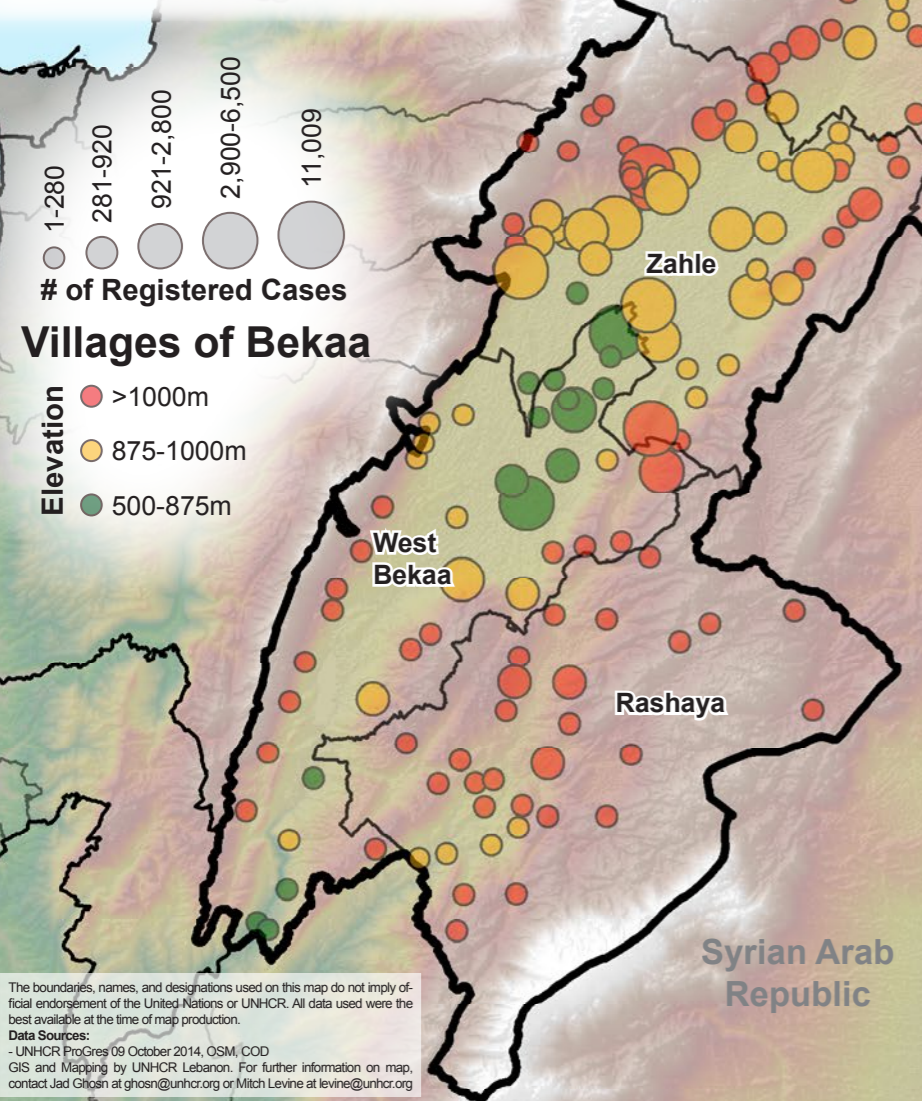


# SYRIA REFUGEE RESPONSE

## LEBANON Bekaa

### Winterization Assistance

28 November 2014



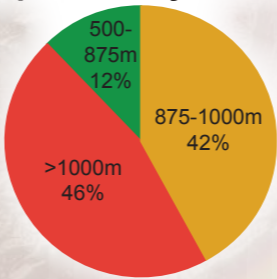
Winterization assistance is based on eligibility lists derived from targeted households in the UNHCR proGres system. For blanket assistance, only those registered from 01 April 2014 were considered for eligibility due to others having recieved assistance last year.

All assistance listed is funded through the end of 2014.

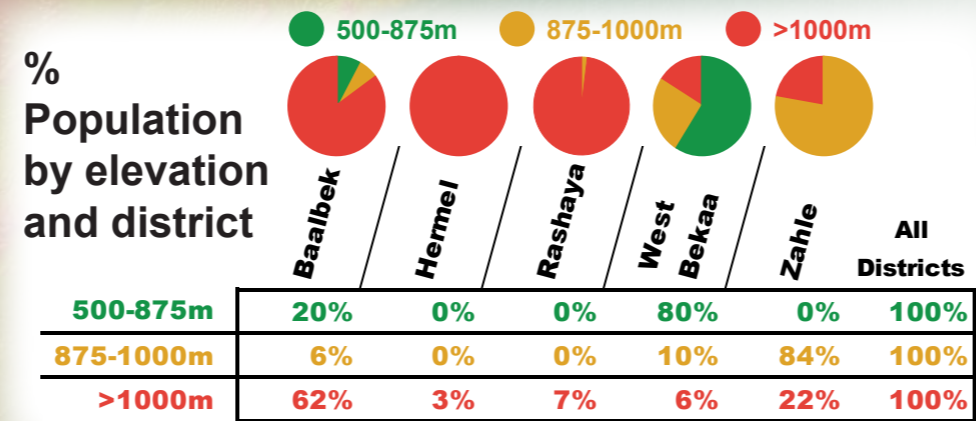
### Winterization Support by Type and Elevation

3,102 Households	6,060 Households	28,504 Households	21,276 Households	Highest Syrians in the Bekaa: 2209m
\$175 Ongoing Cash Assistance for the Most Vulnerable HH* No elevation restriction; \$175USD per month for August - December 2014; this group represents 3 of the 10% most economically vulnerable households; *Includes support from other agencies	\$175 Cash Assistance for the Most Vulnerable HH No elevation restriction; \$175USD per month for November - December 2014; this group represents 7 of the 10% most economically vulnerable households	\$100 Winter Support by Voucher >1000m elevation; \$100USD per month	\$80 Winter Support by CSC Card 500-1000m elevation; \$80USD per month	Aarsal: 1696m
				Average Elevation in Bekaa: 1272m
\$175 Ongoing Cash Assistance for the Most Vulnerable HH* No elevation restriction; \$175USD per month for August - December 2014; this group represents 3 of the 10% most economically vulnerable households; *Includes support from other agencies	\$175 Cash Assistance for the Most Vulnerable HH No elevation restriction; \$175USD per month for November - December 2014; this group represents 7 of the 10% most economically vulnerable households	\$100 Winter Support by Voucher >1000m elevation; \$100USD per month	\$80 Winter Support by CSC Card 500-1000m elevation; \$80USD per month	1000m Zahle: 950-1000m
				875m
\$175 Ongoing Cash Assistance for the Most Vulnerable HH* No elevation restriction; \$175USD per month for August - December 2014; this group represents 3 of the 10% most economically vulnerable households; *Includes support from other agencies	\$175 Cash Assistance for the Most Vulnerable HH No elevation restriction; \$175USD per month for November - December 2014; this group represents 7 of the 10% most economically vulnerable households	\$100 Winter Support by Voucher >1000m elevation; \$100USD per month	\$80 Winter Support by CSC Card 500-1000m elevation; \$80USD per month	Blankets No elevation restriction; those who registered after 31 March 2014; in kind
				Lowest Syrians in Bekaa: 613m

Syrian Refugee Population by Elevation



Out of 87,989 registered households in Bekaa, **67,581 households**, representing **310,275 individuals** will receive winterization support of some kind in 2014.



The boundaries, names, and designations used on this map do not imply official endorsement of the United Nations or UNHCR. All data used were the best available at the time of map production.

Data Sources:  
- UNHCR ProGres 09 October 2014, OSM, COD  
GIS and Mapping by UNHCR Lebanon. For further information on map, contact Jad Ghosn at ghosn@unhcr.org or Mitch Levine at levine@unhcr.org

Figures for cash assistance include HH assisted by SCI and HI. Further cash assistance is expected through WVI, but figures were unavailable at the time of production.

Further winter support is expected through LRC and Oxfam, but the figures were not available at time of production.