



KEY ACHIEVEMENT OF THE MONTH

942,646 refugees and vulnerable host members received food assistance.

HIGHLIGHTS:

Food security sector partners avoided a sudden reduction of e-card voucher value, and thus reduced kilo calorie intake by refugees, in October. This followed extensive donor engagement at various levels by WFP and UNHCR, following declines in funding levels. As a result, WFP and its cooperating partners managed to reach some 922,419 Syrian refugees with the USD30 per individual food voucher. This was done in 2 phases, with the beneficiaries receiving an initial USD20 and then a top-up later in the month thanks to generous donor support. Some 39,569 newly arrived refugees were assisted with food parcels. Through the e-card, WFP injected an additional US\$26.2 million into the Lebanese economy. Other food security sector partners reached some 20,230 vulnerable individuals among the four different caseloads and injected a further US\$1.4 million into the Lebanese economy. The e-card remains the modality for delivering food assistance to the refugees.

Data collection for the joint FAO/REACH country-wide food security and livelihood assessment started in October. The assessment is mainly focused on host communities, but it will include some refugees hosted in the host communities. There were no changes to the number of livestock reached during the joint FAO/Ministry of Agriculture national livestock vaccination programme.



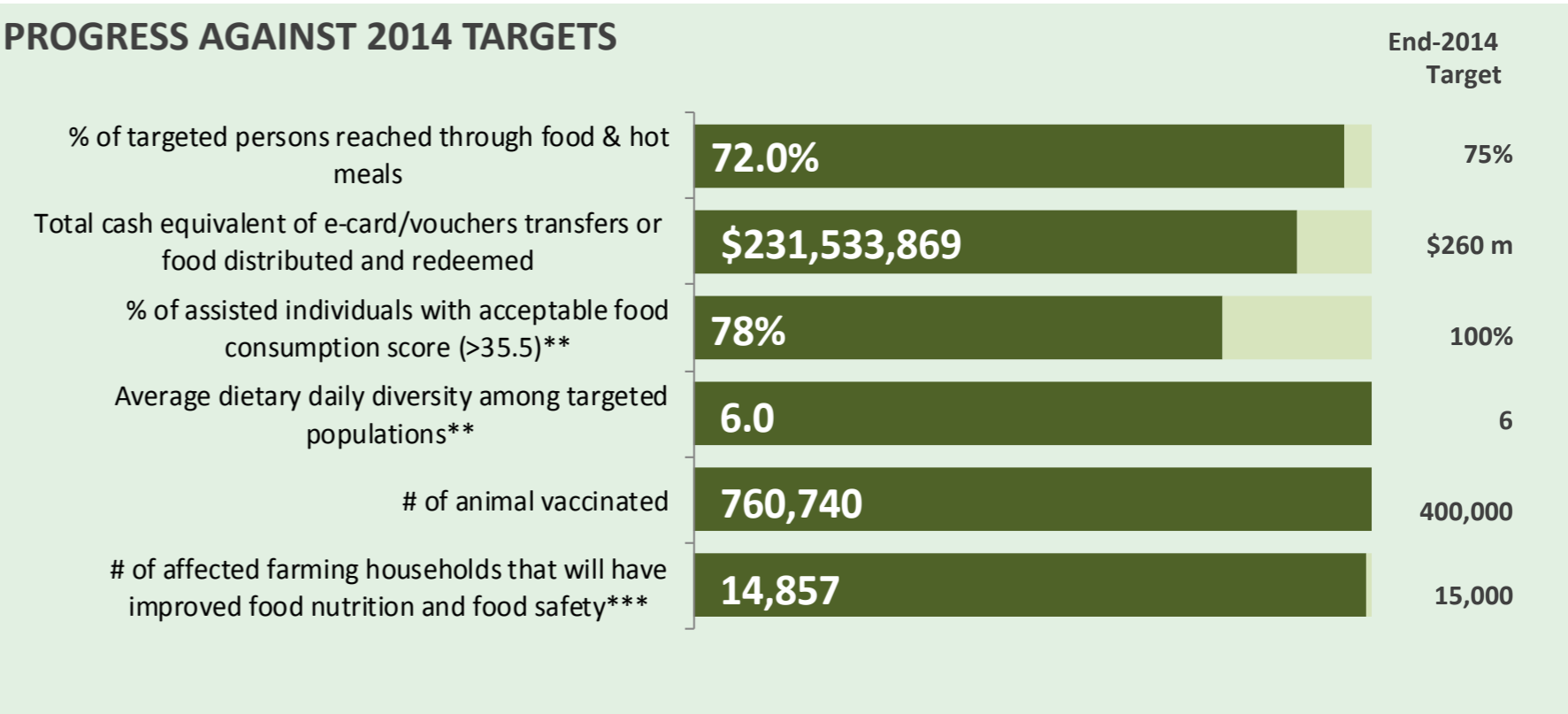
NEEDS ANALYSIS:

The need for food assistance remains a priority among Syrian refugees and other vulnerable groups; thus, food security sector partners plan to continue food assistance for vulnerable groups in November. Partners plan to reach out to some 1,125,000 Syrian refugees and other population groups. Additionally, thanks to grant funding from the World Bank and UNHCR, the government will launch food assistance to some 27,700 extremely poor Lebanese individuals registered under the National Poverty Targeting Programme (NPTP).

Food security sector partners also plan to start working out the practical arrangements of a new targeting and verification process for 2015. The targeting questionnaire will be finalised and endorsed by the Inter-Agency/Inter-sectoral group in November. The aim will be to start administering this questionnaire in December 2015.

Analysis of the data collected during the Food Security and Livelihoods assessment for host communities will be done in November, with preliminary results expected at the end of that month. The IOM and HRC will also present results from a Livelihoods assessment of Lebanese Returnees in November. This will give the much needed information on the food security status of this population group.

PROGRESS AGAINST 2014 TARGETS



\*\* Indicators are reported on a quarterly basis - \*\*\* Target changed and achievements reported since July 2014.

Source: figures reported above reflect the information reported to Sector Coordinators by Partners participating in Working Groups

Leading Agency: WFP - Naison CHAKATVA - naison.chakatsva@wfp.org  
Reporting Agencies:

