

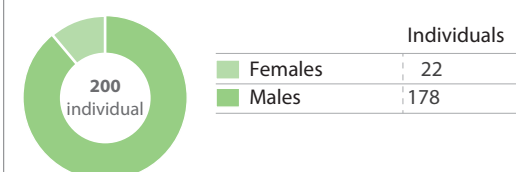
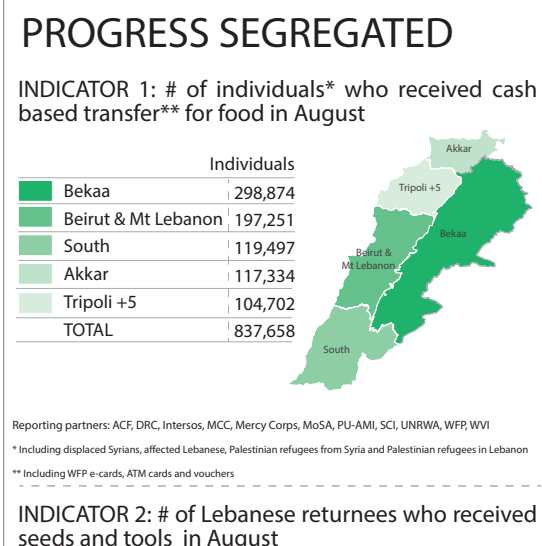
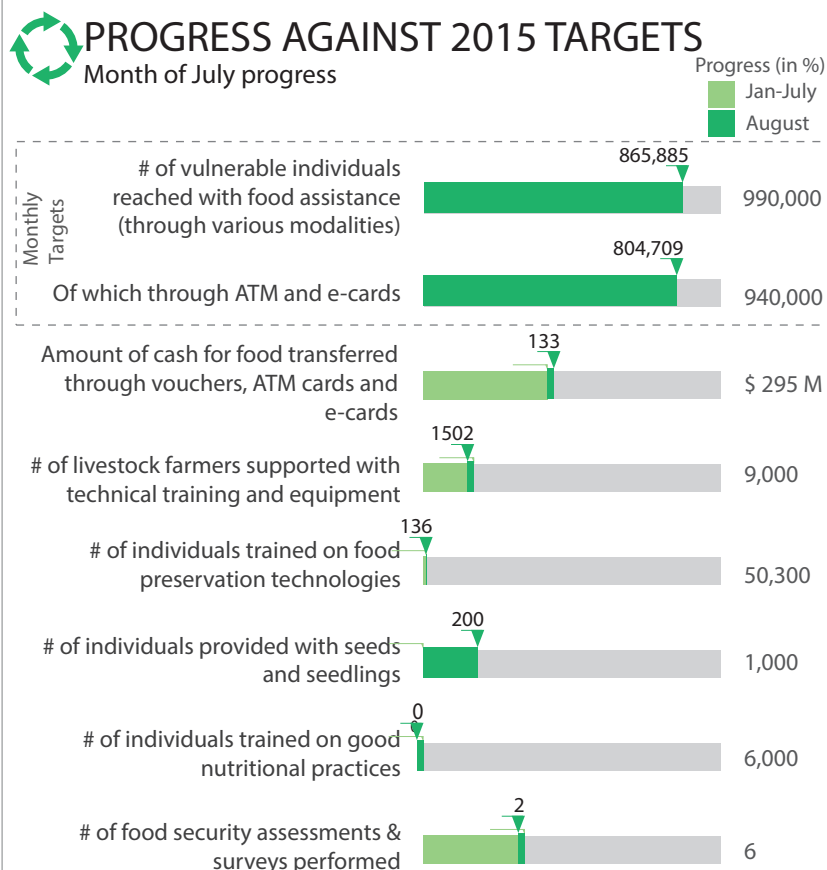
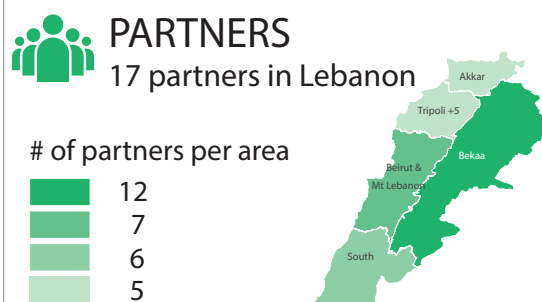
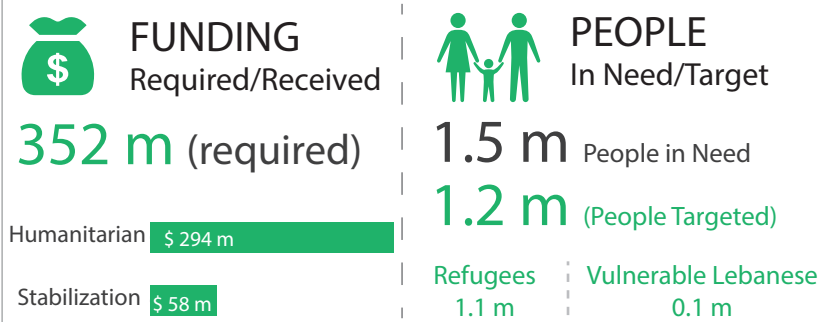
SITUATION ANALYSIS

Limited sector funding continues to severely restrict the scale of the food assistance activities. WFP continued to provide US\$ 13.5 per person in August. From September, WFP is forced to cap assistance at five members per household, ensuring that limited assistance reaches the maximum number of households and that highly and severely vulnerable households continue to be supported. Additionally, from September, safety nets assistance will end.

Sector partners continued the household assessment process to identify those households most vulnerable to food insecurity. As of August a total of 73,987 households had been assessed through the household targeting process. As a result of the household visits, it was determined that the vast majority of the surveyed households fell under the category of highly vulnerable to food insecurity (49%), while the second most prevalent category was severely vulnerable to food insecurity (18%). Following these household assessments, 66,822 individuals were removed from food assistance as of August 2015.

During August, the food security sector provided food assistance to around 866,000 individuals: 763,705 Syrian refugees with e-card assistance and 41,004 Palestine refugees from Syria with cash for food assistance. Around 6,000 vulnerable individuals received food vouchers, 27,000 food parcels and 27,208 vulnerable Lebanese received food assistance through the NPTF.

FAO in collaboration with IOM, targeting Lebanese returnees in Bekaa and Baalbek-Hermel, distributed seeds and tools to 200 households aiming at improving their access to food and nutritional wellbeing; food preservation kits to 100 households to improve their food utilization and bread baking kits to 100 households to improve both their food access and livelihoods.



*IOM/FAO