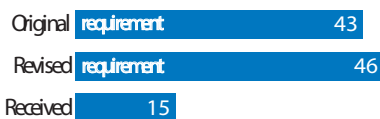


HIGHLIGHTS

- National ownership of government through development and implementation of MoSA National Plan for Children and Women, which delivers multiple child protection services through Social Development Centres, and provides greater investment into community-level hubs and structures to strengthen referral mechanisms.
- Development and endorsement of standardized tools for psychosocial support programmes (PSS) to reduce duplication and ensure similar and consistent approaches and delivery of quality programming across Lebanon. Tools include: Focus group discussion guides for use with children, caregivers, and animators; checklists to ensure safety and quality of activity sites; standardized job descriptions for animators; and memoranda of understanding for property use.
- Agreement and endorsement by all sector members to use internationally validated tool (Strengths and Difficulties Questionnaire) to measure improvements in psychosocial wellbeing in children participating in structured PSS programmes.
 - To date, over 73,000 girls and boys have participated in structured psychosocial activities: those are programmes with a regular, recurring interval over a period of time that engage the children in a structure curriculum or programme.
- Coordinated approach to systems-building, linking emergency response and longer-term development programming from an early stage.
 - For example, 'emergency' alternative care work will be the first steps to a multi-pronged approach to developing a long-term alternative care system for Lebanon.
- Strong capacity building programmes open to all organizations have resulted in high-quality case management coaching programmes available to all case workers, providing consistent and shared learning. The practical guidance for case management and the capacity building of actors has been developed in line with the national law and will be fully integrated and factored in the national standards



FUNDING (in Million \$)



PEOPLE Target

576,953 (People Targeted)

400,900 (Children)

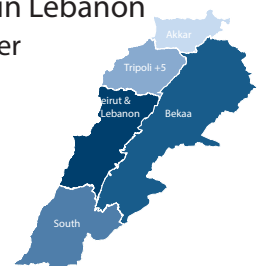
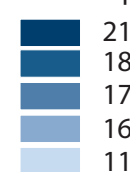
176,053 (Adults)



PARTNERS

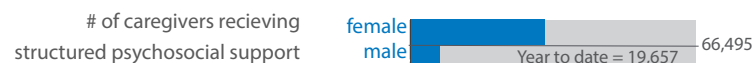
31 partners in Lebanon

Count of partners per area of operation



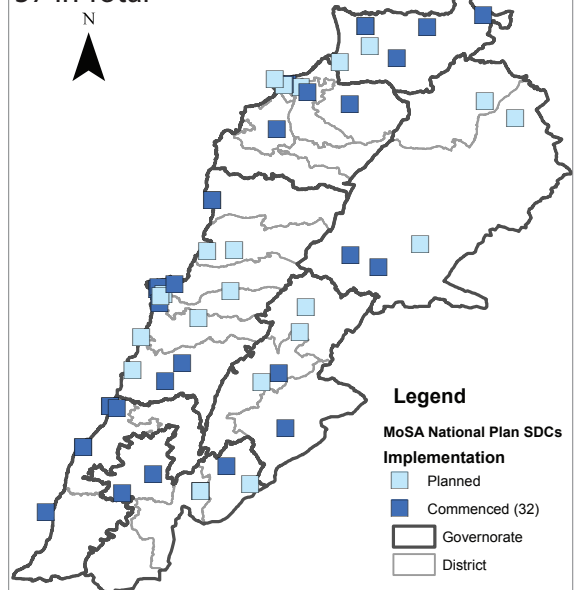
PROGRESS AGAINST 2015 TARGETS

January - June progress



MoSA National Plan Social Development Centres (SDCs)

57 in Total



Commenced: Tarik El Jdideh, Mazraa, Msaybeh, Borj el Barajineh, Borj Hammoud, Baakleen, Anout, Chouelfat, Bab el Tebbeneh, Donniyeh, Bakhoun, Qobbah, Wadi Khaled, Bireh, Rahbeh, Hissa, Qob Elias (sub-center), Rafid (sub-center), Rachaya el Wadi, Talia, Chmestar, Kfarsir, Hasbaya, Bint Jbeil, Nabatiyyeh, Marjeyoun, Saïda, Sarafand, Beysarieh, Tyr, Shehabyeh, Haret Saïda

Planned: Chiyyah, Gobeiry, Salima, Achkout, Aley, Barja, Haret ElNehmeh, Hay ElSellom, Jbeil, Jounieh, Sahit el Nejme, Mina, Minieh, Halba, Bebnin, Hermel, Zahle (Howch el Oumara), Jeb Jennine, Baalbak, Marj, Qaa, Khiam, Shebaa, Mays El Jabal