



**21,426** consultations are provided to the Syrian Refugees in primary health care services

## JUNE HIGHLIGHTS:

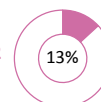
- Access to comprehensive primary health care services including maternal and child health remained stable during the first semester of 2015, the under 5 mortality rates remains low at 0.12/ month. Health centres are functioning in all 10 camps; in total more than 178,000 patients visited health centres in camps and consultation rates reached an average of 3.7 consultations/ refugee/ year (expected range: 1-4).
- MSF-CH is handing over curative care activities in Domiz 1 PHC to DoH Duhok in October 2015. The hand over started in close coordination between DoH Duhok, MSF-CH and UNHCR. MSF-CH will continue to provide specialized services including the maternity and community outreach programmes in Domiz.
- ACF expanded its Mental Health and Psychosocial Support programme to Akre refugee settlement.
- Cholera preparedness preparations continue through KRI in cooperation with the WASH sector, among others additional stocks of medication are ordered to enable timely response.



Al-Obaidi Camp, Anbar. UIMS.



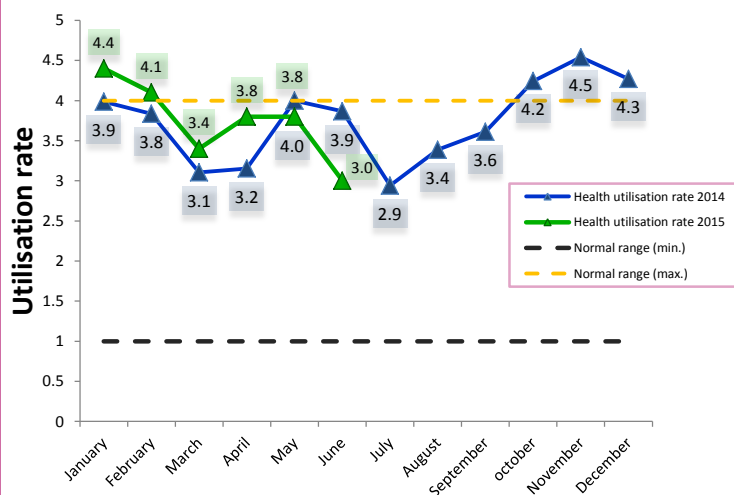
**\$34.29 million** required in 2015  
**\$4.52 million** received by June 2015\*



## NEEDS ANALYSIS:

- Continued support for health care services provided by the Ministry of Health and humanitarian actors is a key priority to prevent excess morbidity and mortality among the displaced Syrian populations. Partners face increasing constraints to raise the needed funds to maintain health services in camps.
- With the onset of summer, control of communicable diseases needs to be strengthened further in close cooperation with other sectors.
- Access to health care services for non-camp populations needs to be further strengthened. Drug shortages remain a key concern in public health facilities. Lack of awareness on available health services and insufficient health knowledge impact health seeking behaviour.
- Access to services for mental health and psychosocial care services as well as for persons with disabilities remains an area in need of further support for both camp and urban refugee populations.

Monthly health care utilisation rates 2014/ 2015



## IRAQ RESPONSE INDICATORS: JUNE 2015

172,727 (21,426 in June) consultations for refugees in primary health care services

5,708 (930 in June) refugees referred to secondary or tertiary healthcare services

54 (0 in June) health facilities supported

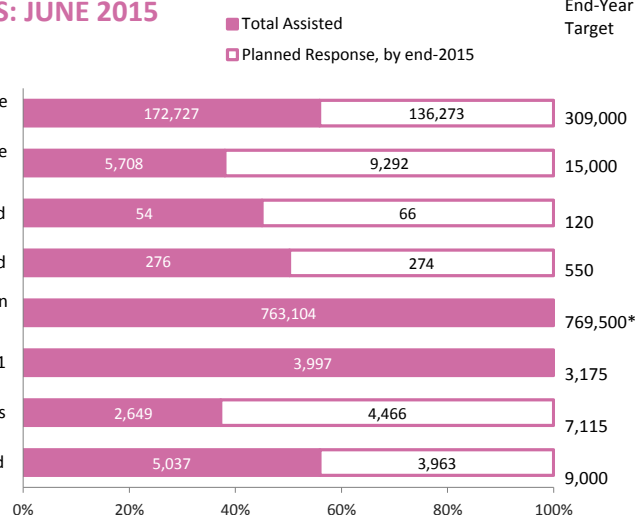
276 (44 in June) health care staff trained

0 children receiving polio vaccination during mass vaccination campaigns in June (no campaign)

3,997 (546 in June) women in refugee camps attending ANC1

2,649 (323 in June) children under 1 immunised against measles

5,511 (636 in June) mental health care consultations provided



\*Target for each polio campaign covering KR-I.

Planned response based on full funding of 3RP for an expected direct beneficiary population of 250,000 Syrian refugees and 1.5 million members of impacted local communities by end-2015. There are currently 249,266 Syrian refugees registered by UNHCR (37.5% in camps and 62.4% out of camps).

Leading Agencies:  
UNHCR, Sandra Harlass, harlass@unhcr.org/  
WHO, Dr. Mohammad Daoud Altaf, altafm@who.int  
and Ministry of Health (MoH - KRI).



World Health Organization



unicef

