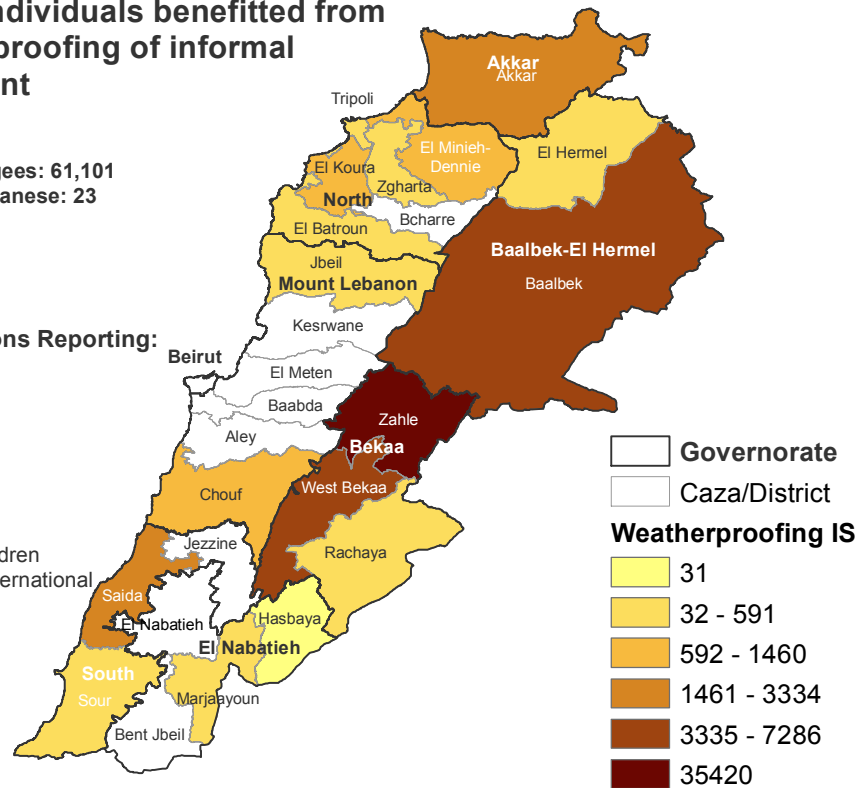


61,140 individuals benefitted from weatherproofing of informal settlement

Syrian Refugees: 61,101
Affected Lebanese: 23
PRS: 16

Organizations Reporting:

Beyond
CHF
CISP
DRC
IOM
MEDAIR
PU-AMI
Save the Children
Solidarités International
UNHCR

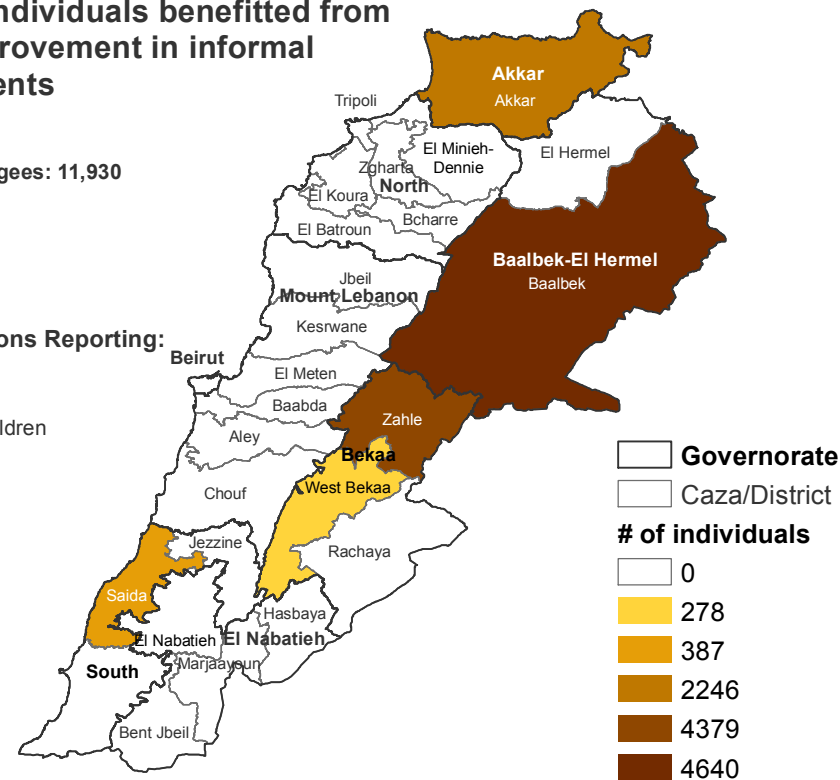


11,930 individuals benefitted from site improvement in informal settlements

Syrian Refugees: 11,930

Organizations Reporting:

MEDAIR
PU-AMI
Save the Children
UNHCR

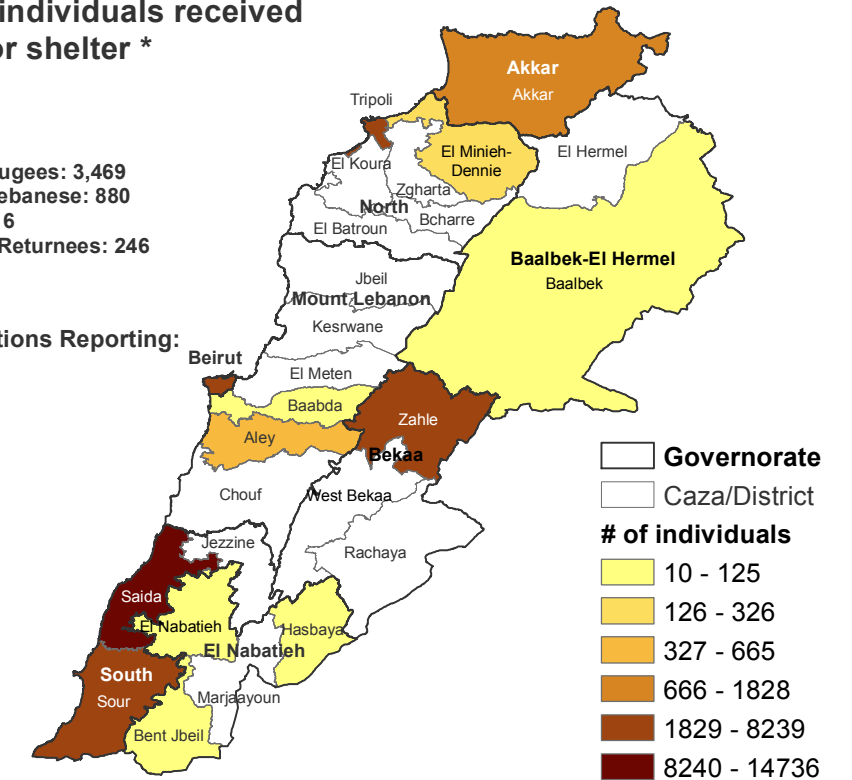


48,211 individuals received cash for shelter *

Syrian Refugees: 3,469
Affected Lebanese: 880
PRS: 43,616
Lebanese Returnees: 246

Organizations Reporting:

DRC
IOM
PU-AMI
UNRWA
UNHCR



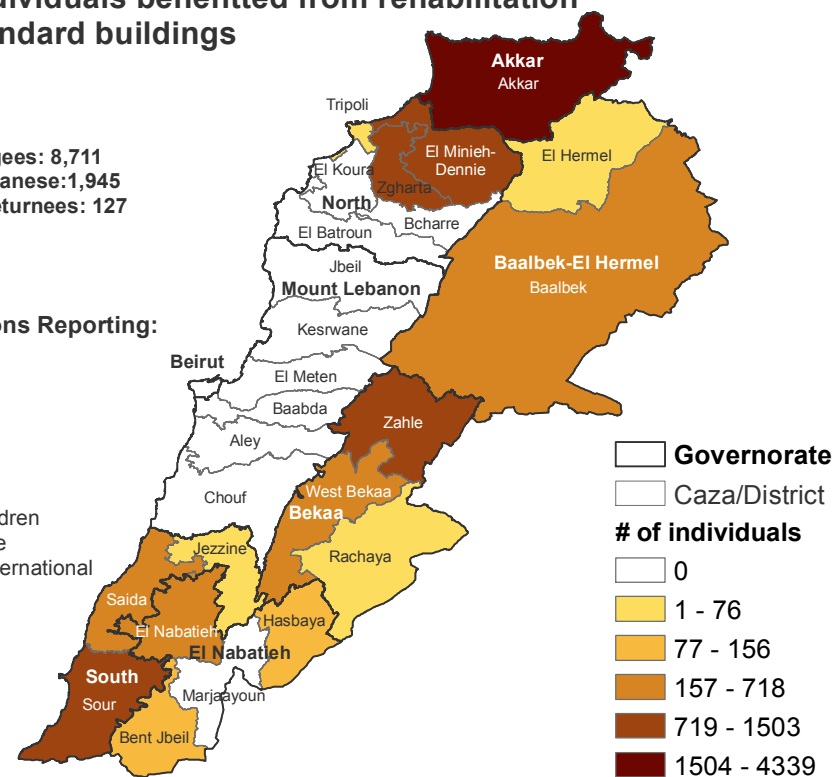
* UNRWA reports at office level only - Beirut, Saida, Zahle, Tyre - affecting the reliability of the map for PRS

11,287 individuals benefitted from rehabilitation of substandard buildings

Syrian Refugees: 8,711
Affected Lebanese: 1,945
Lebanese Returnees: 127
PRS: 245
PRL: 52

Organizations Reporting:

CISP
DRC
IOM
MEDAIR
NRC
PU-AMI
Save the Children
Solidar Suisse
Solidarités International
UNHCR

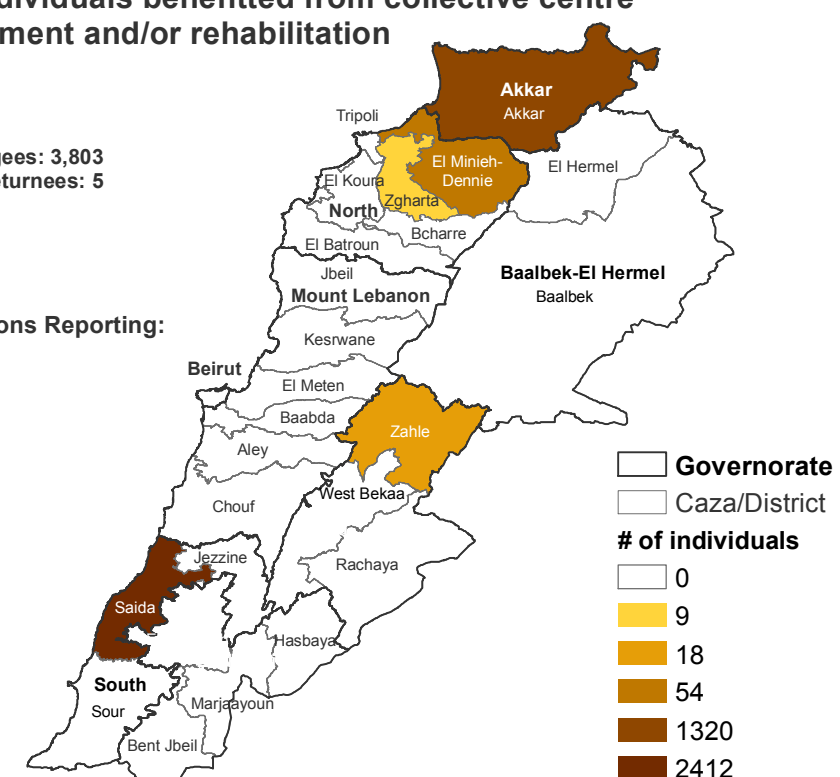


3,813 individuals benefitted from collective centre management and/or rehabilitation

Syrian refugees: 3,803
Lebanese returnees: 5
PRS: 3
PRL: 2

Organizations Reporting:

ABAAD
CONCERN
DRC
PU-AMI
UNHCR

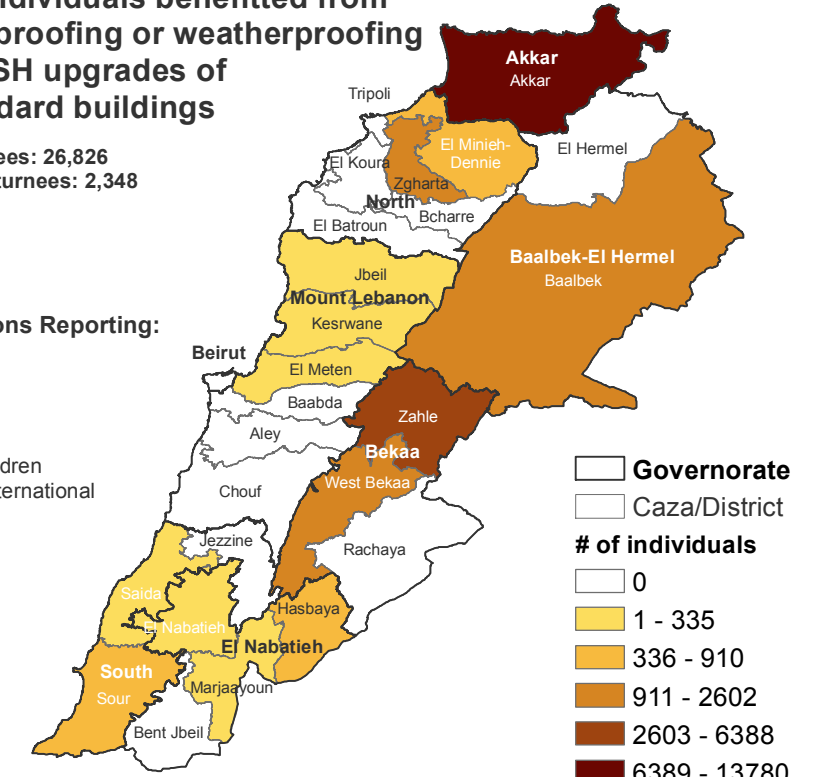


29,174 individuals benefitted from weatherproofing or weatherproofing and WASH upgrades of substandard buildings

Syrian refugees: 26,826
Lebanese returnees: 2,348

Organizations Reporting:

CISP
IOM
MEDAIR
PU-AMI
Save the Children
Solidarités International
UNHCR



Contact Information:

For information about Shelter Sector, please contact:
Ahmad Kassem at kassema@unhcr.org or
Vincent Dupin at dupin@unhcr.org
Synne Bergby at synne.bergby@unhabitat.org
If you have any enquiry about the map, please contact:
Remo Fambri at fambri@unhcr.org

Disclaimer:

The boundaries and names shown on this map do not imply official endorsement or acceptance by the United Nations.. It does not constitute an official United Nations map. The designations employed and the presentation of material on this map do not imply the expression of any opinion whatsoever on the part of the Secretariat of the United Nations concerning the legal status of any country, territory, city or area or of its authorities, or concerning the delimitation of its frontiers or boundaries.

SOURCE: data reported by partners through ActivityInfo in 2015

Reporting Partners:

ABAAD, Beyond, CHF, CISP, CONCERN, DRC, IOM, MEDAIR, NRC, PU-AMI, SCI, Solidar Suisse, Solidarités, UNRWA, UNHCR

