



Inter-Agency  
Coordination  
Lebanon

# SUPPORT TO LEBANESE HOST COMMUNITIES AND PUBLIC INSTITUTIONS

UNDER THE SIXTH REGIONAL RESPONSE  
PLAN (RRP6 - 2014)



# TABLE OF CONTENTS

2	OVERVIEW OF SUPPORT TO LEBANESE HOST COMMUNITIES AND PUBLIC INSTITUTIONS UNDER THE SIXTH REGIONAL RESPONSE PLAN .....
4	WATER, SANITATION & HYGIENE .....
6	PUBLIC HEALTH .....
8	EDUCATION .....
10	MUNICIPAL AND COMMUNITY SUPPORT PROGRAMMES AND LIVELIHOODS .....
12	PROTECTION, CHILD PROTECTION, AND SEXUAL AND GENDER-BASED VIOLENCE .....
14	FOOD SECURITY .....
16	SHELTER .....

# SUPPORT TO LEBANESE HOST COMMUNITIES AND PUBLIC INSTITUTIONS



## UNDER THE SIXTH REGIONAL RESPONSE PLAN (**RRP6 - 2014**)

Lebanon has shown extraordinary generosity in hosting a record number of refugee children, women and men from Syria into Lebanon. Over a million refugees registered with UNHCR live in over 1,170 communities across the country. This dramatic surge in population has strained public services and infrastructure that were already fragile before the Syrian crisis. The profound economic, social, and environmental impact of the crisis in Syria on Lebanon is evident in both rural and urban communities.

Under the sixth Regional Response Plan (RRP6)<sup>1</sup>, covering the year 2014, the international community recognized the need to increase support to Lebanese host communities to help them cope with the large numbers of refugees.

An estimated USD 171.2 million equivalent to 19.6% of the resources mobilized for the implementation of the RRP6<sup>2</sup> has been directed to institutional and community support.

This document presents an overview of the key results achieved with support from RRP6 partners, including UN agencies, NGOs and donors, to help Lebanon ease the burden of the large presence of refugees from Syria<sup>3</sup>.

The main UN Agencies contributing to this support to Lebanese host communities are UNICEF, UNHCR, UNDP, as well as WHO and FAO, thanks to the support from the European Union, the United States, the United Kingdom, Germany, and Canada.

### NATIONAL-LEVEL SUPPORT

From the outset of the Syrian crisis, humanitarian actors have worked in support to Lebanese communities and institutions that have been at the forefront of the response to the needs of Syrian refugees and vulnerable Lebanese. International partners worked and continue to work closely with line ministries to identify areas of engagement in line with national priorities and programmes. To this end, USD 77.9 million - or 46% of the USD 171.2 million mobilized for host communities - was invested in programmes aimed at supporting public institutions both at central and governorate levels.

#### **\$ 27.9 million**

TO ASSIST THE MINISTRY OF EDUCATION AND HIGHER EDUCATION IN ITS REACHING ALL CHILDREN WITH EDUCATION (RACE) PLAN, TO PROVIDE SUPPLIES AND EQUIPMENT, AND TO REHABILITATE SCHOOLS.



#### **\$ 27.7 million**

TO THE MINISTRY OF PUBLIC HEALTH TO STRENGTHEN THE PUBLIC HEALTH SYSTEM, THROUGH PROVISION OF EQUIPMENT AND SUPPLIES AND REHABILITATION OF HEALTH FACILITIES, TRAINING OF HEALTH CARE PROVIDERS AND STAFFING SUPPORT.



#### **\$ 11.1 million**

TO SUPPORT THE MINISTRY OF WATER AND ENERGY THROUGH ASSISTANCE TO WATER ESTABLISHMENTS AND MUNICIPALITIES FOR WATER SUPPLY AND SANITATION.



#### **\$ 6.4 million**

TO STRENGTHEN THE CAPACITY OF THE MINISTRY OF SOCIAL AFFAIRS, INCLUDING THE SOCIAL DEVELOPMENT CENTRES, TO COORDINATE AND RESPOND TO THE CRISIS, INCLUDING PROVIDING COMMUNITY OUTREACH SERVICES.



#### **\$ 1.8 million**

TO THE PRESIDENCY OF THE COUNCIL OF MINISTERS FOR DISASTER RISK MANAGEMENT.



#### **\$ 1.5 million**

TO SUPPORT THE MOST AFFECTED LEBANESE BY CONTRIBUTING TO THE NEW FOOD COMPONENT OF THE NATIONAL POVERTY TARGETING PROGRAMME.



#### **\$ 1.5 million**

TO THE MINISTRY OF INTERIOR AND MUNICIPALITIES TO ENHANCE THE CAPACITY OF SECURITY CELLS AND THE GENERAL DIRECTORATE OF GENERAL SECURITY TO DEVELOP THE BORDER MANAGEMENT CAPACITY.



The above support to Lebanese Government ministries and programmes has significantly contributed to the projects identified under Track 1 and 2 of the Government's Stabilization Roadmap of Priority Interventions from the Syrian conflict issued in November 2013 and updated in September 2014.

## January // October COMMUNITY-LEVEL SUPPORT

Efforts to mitigate the pressure placed on local communities as a result of the Syrian crisis accelerated in 2014. These efforts targeted communities with the highest concentration of Lebanese poor who were hosting large numbers of refugees. The projects aimed to enhance public services, mitigate the negative effects of the refugee presence and prevent tensions between populations.

Projects such as extending water networks; equipping municipalities with waste collection trucks; rehabilitating schools and health centres; and the construction of local markets are only a few examples.

The total investments directly impacting Lebanese communities hosting large numbers of refugees amount to USD 93.3 million (or 54% of the total funds mobilized for supporting host communities). This includes 244 municipal

and community support projects implemented rapidly to meet the needs of host communities. Details on these and other investment are described in the following chapters.

## IMPACT ON THE LEBANESE ECONOMY

UN agencies are conducting a study to assess the impact of humanitarian aid flows on the Lebanese economy. It is estimated that, during 2014, actual spending by the largest UN agencies<sup>4</sup> amounted to USD 800 million. The input-output model utilized to conduct the study suggests that the injection of USD 800 million worth of international assistance in 2014 will generate a GDP growth of 1.28 per cent, assuming that all other things remain equal in the Lebanese economy. The model also predicts that every USD spent on humanitarian assistance has a multiplier value of 1.6 in the economic sectors. This means that when the UN agencies disburse the USD 800 million, it could create additional indirect benefits of USD 1.23 billion for the Lebanese economic sectors. Similarly, a WFP study, finalized in July 2014, concluded that the economic impact of food assistance on the economy resulted in a multiplier of 1.5 in the food products' sector. The impact of humanitarian aid on the Lebanese economy was positive but did not completely mitigate the negative effect on Lebanon's economy of the Syrian crisis<sup>5</sup>. In the absence of humanitarian aid, however, the economic situation would be worse.

## 2015 NEXT STEPS

### Support in the Lebanon Crisis Response Plan

In sum, programmes in health, education, social services and water supply together with direct community support projects at municipal level contributed directly to addressing priority needs of Lebanese communities most affected by the crisis. In 2015, the Lebanon Crisis Response Plan, an integrated plan, will aim to increase assistance to addressing both the humanitarian needs of the most vulnerable communities and the stabilization needs of Lebanon. This means increased efforts on strengthening national institutions and public services, while targeting the 1.5 million vulnerable Lebanese through direct assistance and service delivery, community services and economic recovery. One third of the new plan, USD 726 million, will target the stabilization priorities of Lebanon.

- (1) The Regional Refugee Response Plan (RRP) is the international response (United Nations and partner Non-Governmental Organizations) to address the impact of the Syria crisis in Lebanon for refugees from Syria and vulnerable Lebanese. In addition to the RRP6, there has been a parallel and complementary response from multinational and bilateral donors, both directly to the Government and to NGOs.
- (2) Target established under the RRP6 to allocate funding to Lebanese host communities and public institutions is 25%.
- (3) Results are presented for each sector and cover the January – October 2014 period. Data and information were collected thanks to the RRP6 inter-agency structure. UNHCR, UNICEF, WFP and UNDP.
- (4) According to the World Bank September 2013 Economic and Social Impact Assessment of the Syrian Conflict, the consequence of the conflict cut real GDP growth by 2.9 percentage points each year.
- (5) This project is a joint collaboration between humanitarian agencies and the World Bank and the Government of Lebanon. Source: Quotes from the FAO documentary movie "The Power of Resilience", November 2014 ([https://www.youtube.com/watch?v=93l3inPrmpl&feature=em-upload\\_ownerGrazing](https://www.youtube.com/watch?v=93l3inPrmpl&feature=em-upload_ownerGrazing)).





# WATER, SANITATION & HYGIENE

The primary aim of the Water, Sanitation and Hygiene (WASH) sector support is to reduce the risk of diseases by ensuring the supply of basic water, sanitation and hygiene services to the most vulnerable populations in Lebanon.

## RESULTS TO DATE

Significant investments were made in Lebanese communities and government institutions to improve the effectiveness and reliability of water and sanitation provision.

In 2014, 1,027,752 Lebanese benefitted from investments in communal water infrastructure. Projects may be new developments or support to existing community or Water Establishment infrastructure. Typical infrastructure investment involved supply of generators and accessories, supply of chlorination systems, water pumps, reservoirs and distribution networks. In Mount Lebanon's Chouf district, the construction of six water reservoirs of 500,000 litres capacity will benefit 40,000 Lebanese. In November over 400,000 Lebanese benefitted from the supply of equipment to 30 water production and distribution systems with all 4 water establishments.

In cooperation with the Beirut and Mount Lebanon Water Establishment, 19 chlorinators were installed serving the

most vulnerable municipalities and benefitting 114,000 Lebanese. In partnership with the North Lebanon Water Establishment, 1.3 km of a 600 mm distribution line and controls were replaced to provide water to 15 villages in Koura with a beneficiary population of 61,000 Lebanese. Through such interventions, chlorinated drinking water is provided and the risk of water-borne disease is reduced significantly.

Sanitation was improved through repair and upgrading of sewerage networks and connecting households to the waste water networks; over 40,000 Lebanese households benefitted in 2014. In South Lebanon the completion of upgrading and repairing sewage networks has ensured safer sanitation for 8 municipalities including Chhim and Sarafand and adjacent locations. Nationally, 4,168 households have been equipped with toilet facilities. Additional support was provided in terms of supply of sludge trucks for transporting and disposal of septic tank waste in targeted municipalities.

Solid waste management was also supported through the provision of household and communal solid waste bins and the supply of trucks for the collection of solid waste; to date over 195,000 Lebanese households benefitted from these activities. In Baalbek, 135,000 people benefitted from a solid waste programme comprised of 2,469 household bins (200 L), and the procurement of five garbage trucks or compactors to the Unions of Municipalities. Similar projects are ongoing in Bekaa, Nabatieh, North Lebanon and South Lebanon.

## INCREASING WATER SUPPLY IN MAJDLAYA

The Nabaa Al Qadi spring in the Zgharta district was running dry. WASH partners drilled a new borehole at the pumping station and equipped it with a pump and supply pipes to deliver water to the Majdlaya municipality water reservoir. As a result, the daily availability of drinking water was increased by 150 litres per person benefitting 30,000 Lebanese in fourteen villages.



Drilling of borehole in Nabaa Al Qadi  
Photo credits: CISP

## RESPONDING TO WATER SCARCITY



THE UNUSUALLY DRY AND MILD WINTER OF 2013/14, IN ADDITION TO THE INCREASED DEMAND FOR WATER DUE TO THE INCREASE IN POPULATION, LED TO AN AGGRAVATED NATIONAL WATER DEFICIT IN SUMMER AND AUTUMN. WASH ACTORS WORKED TO REDUCE THE IMPACT OF WATER SCARCITY THROUGH THE IMPLEMENTATION OF FIFTEEN PRIORITY PROJECTS OF A TOTAL VALUE OF \$ 4.5 MILLION. THE PROJECTS WERE VETTED BY THE MINISTRY OF ENERGY AND WATER, TO BE IN LINE WITH ITS STRATEGIC PLAN, OF TARGETING HIGH RISK, VULNERABLE COMMUNITIES. A TOTAL OF 95,160 LEBANESE BENEFITTED FROM THESE INTERVENTIONS. THE WATER SCARCITY PROJECTS IMPROVED WATER PRODUCTION AND DISTRIBUTION CAPACITY IN THE TARGETED COMMUNITIES.

## KEY NUMBERS:

**498,320**

VULNERABLE LEBANESE BENEFITTING FROM INCREASED ACCESS TO SOLID WASTE DISPOSAL

**1,027,752**

LEBANESE BENEFITTING FROM IMPROVED ACCESS TO SAFE AND CLEAN WATER

**213,000**

VULNERABLE LEBANESE BENEFITTING FROM IMPROVED ACCESS TO WASTE WATER FACILITY

**\$112.2 m**

REQUESTED BY THE WASH SECTOR FOR STABILIZATION ACTIVITIES IN 2015.



*New water distribution pipe in Koura  
Photo credits - CISP*

## 2015 NEXT STEPS

### WASH in the Lebanon Crisis Response Plan

WASH sector planning is conducted with the Ministry of Energy and Water, the Ministry of Public Health, the four Water Establishments and municipalities to ensure it is consistent with, and supportive of, the national strategies for water and sanitation. The WASH sector will continue with its current approach and increase the emphasis on sustainable projects and interventions in water, sanitation and hygiene promotion for the benefit of the most vulnerable and support and improve national water and sanitation services.

- To enhance water efficiency at household level.
- To increase the level of safe water treatment and quality monitoring.
- To promote awareness of water scarcity issue and appropriate response.
- To mitigate disposal of wastewater into environment/public areas.
- To work with Water Establishments and municipalities to boost capacity and resources available for improving wastewater management.
- To promote good hygiene practices through multiple communication methods (hygiene promotion, schools, women's groups, youth groups, mass media campaigns), while increasing beneficiary participation and decision making through community-led behaviour change methods.
- To ensure integrated health, education, and WASH disease monitoring and awareness raising campaigns in collaboration with the government authorities.
- In line with the planned polio immunization campaigns, to promote hygiene messaging for children and communities.
- To establish and promote acute watery diarrhoea preparedness and response plan with the health sector.



# PUBLIC HEALTH

The primary aim of the Health sector is to support the national health system to improve its resilience and enable it to cope with the increased demand in health services.

## RESULTS TO DATE

In close cooperation with the Ministry of Public Health (MoPH), Lebanon's health care system has been capacitated in the following three categories:

### 1. Improved Monitoring and Control of Communicable Diseases

The national epidemiology and surveillance system was improved for timely detection of diseases. 1304 health care workers were trained to detect, treat and prevent infectious diseases to the benefit of all communities. 11 staff were recruited to support MoPH in Communicable Disease Surveillance.

Due to the increased risk of cholera and diarrheal disease outbreaks, kits were distributed to hospitals across Lebanon to cover the needs of 24,000 patients. 1 million chlorine tablets were provided in areas most at risk of water borne diseases. The referral lab at Beirut Rafic Hariri University hospital and seven public hospital labs were capacitated to monitor water quality to alert in the event of any potential infectious disease outbreaks.

Rehabilitation of water laboratories was completed to conduct water tests for municipality water in Beirut, Tripoli, Baalbek, Dahr El Bacheq and Halba Governmental hospitals. In Rafic Hariri Governmental University Hospital, 4 negative pressure rooms were rehabilitated to be used for isolation of patients with communicable diseases, in addition to 4 other rooms at Baalbek, Bent Jbeil, Baabda and Tripoli Governmental hospitals.

### 2. Increased Access to primary health care services by Lebanese patients

Over USD 6 million pharmaceuticals and supplies were procured for Primary Health Care centres (PHCs): 50 emergency health kits containing life-saving medicines, intravenous fluids and surgical supplies were made available to 25 health care centers across Lebanon to benefit around 500,000 patients. Additionally, 30 surgical kits were distributed to public hospitals to support 3,000 patients. Medications for chronic diseases to primary healthcare centers were made available for a total of 150,000 patients suffering from hypertension, cardiovascular diseases, dyslipidemias, diabetes, asthma, mental health and other chronic health conditions. 102,376 insulin vials were provided to serve around 500

Lebanese diabetic patients in need.

Over USD 1 million to purchase 6,200 items of medical equipment was provided to 180 PHCs and selected hospitals, which resulted in reinforced capacity and enabled a 40 per cent increase in the utilization of health services, representing around 400,000 patients.

To address the need for mental health care in vulnerable host communities, training was conducted in 45 PHCs and on mental health and psychological first aid in 30 centres across Lebanon. 106 Lebanese health care providers (doctors, nurses, social workers) were trained on the assessment, management, follow-up and referral of mental health conditions.



Delivery insulin batches to the Ministry of Public Health Karantina warehouse.

Photo credits: WHO Lebanon

## THE MOTHER AND CHILD HEALTH CARE INITIATIVE



WAS LAUNCHED AT THE RACHAYA GOVERNMENTAL HOSPITAL AND IN THE RAFIC HARIRI UNIVERSITY HOSPITAL IN SEPTEMBER 2014. THIS INITIATIVE ALLOWS 350 LEBANESE WOMEN IN NEED TO BENEFIT FROM PRENATAL, DELIVERY AND POSTNATAL HEALTHCARE SERVICES FREE OF CHARGE, IN ADDITION TO HEALTHCARE SERVICES TO THEIR OFFSPRING UP TO TWO YEARS OF AGE.

## KEY NUMBERS:

180

PRIMARY HEALTH CARE CENTERS PROVIDED MEDICAL SUPPLIES AND EQUIPMENT

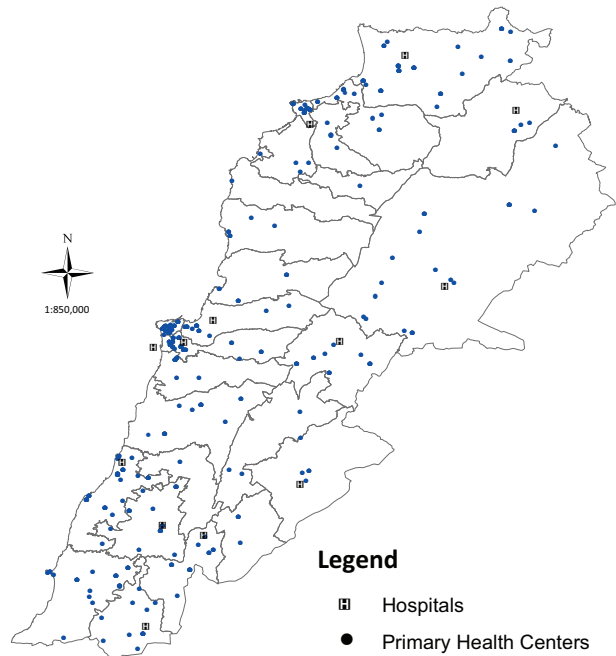
POLIO CAMPAIGNS HAVE HELPED LEBANON REMAIN POLIO FREE.

\$ 6 m

IN PHARMACEUTICALS AND SUPPLIES PROCURED.

\$ 92 m

REQUESTED BY THE HEALTH SECTOR FOR STABILIZATION ACTIVITIES IN 2015.



Primary Health Care centres and hospitals rehabilitated and equipped in 2014

To reinforce the MoPH capacity to deliver services, a total of 90 staff were recruited to support the MoPH in the following domains:

- 32 staff for the communicable diseases, epidemiology and surveillance services
- 15 staff for the PHC and Maternal and Child Health Departments
- 40 nurses and midwives for PHCs in vulnerable areas
- 3 staff to lead the project for 'Support to Conflict Reduction through Improving Health Services in the Context of the Syrian Crisis.'

### 3. Increased vaccination coverage

National immunization programmes were strengthened through management support, and procurement of supplies and vaccines - including support to the national tuberculosis programme and its facilities. All children under five years benefit from nation-wide immunization campaigns against polio (268,711 Lebanese children in October 2014 alone), measles, and rubella and also from Vitamin A supplementation. Vaccination campaign planning and the training of nearly 4,200 vaccinators were undertaken. The polio routine and campaign immunizations have helped Lebanon remain polio free and maintained the polio coverage above 96 per cent.

## 2015 NEXT STEPS

### Health in the Lebanon Crisis Response Plan

The appeal for the Health sector for 2015 includes USD 92 million under the stabilization component, which is expected to benefit the Lebanese healthcare system, as follows:

- Increase activities to strengthen the capacity of the Lebanese national health system, including capacity development of health sector workers.
- Over 900,000 vulnerable Lebanese will be targeted by the health sector next year, in particular to address health issues of youth, elderly and most vulnerable women.
- Continue support to the Early Warning and Response System, including further expansion to the private sector. Develop a larger network of PHCs and hospitals and operationalize water monitoring labs.
- Continue to support the PHCs system, including: prevention and control of communicable diseases and immunization; maternal and child health care; reproductive health; chronic and non-communicable disease management; and mental health support. 920 PHCs and 66 hospitals will be targeted.
- Provide support to an over-burdened national health system through the procurement of essential medicines and equipment; early warning systems; capacity building; and technical support; and, reassessing outbreak risks and stockpiling necessary medical supplies accordingly.





The Education sector aims to provide access to quality education for all children and to strengthen national education policies and systems.

## RESULTS TO DATE

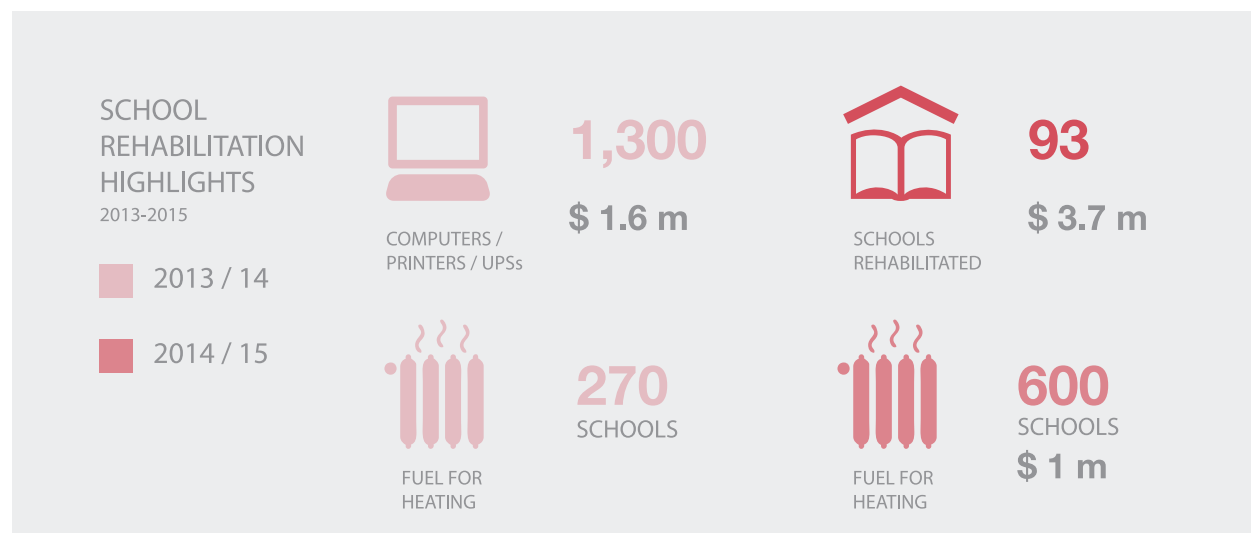
Education partners have supported the Ministry of Education and Higher Education in developing 'Reaching All Children with Education in Lebanon', (RACE) an ambitious plan which lays out the education strategy for the next three years. The plan, launched in June 2014, focuses on providing opportunities to access education for Syrian children, and seeks to ensure that all children in the public education system benefit from strengthening the education system through better learning spaces, equipment in schools, teaching and learning materials, including textbooks for all children in public schools. The plan also foresees quality system improvement in oversight and support to teachers.

In 2014, partners supported the capacity of 2,688 staff and teachers of the Ministry of Education and Higher Education in areas such as active learning, classroom management, language and positive discipline. Six regional offices of the Ministry were provided with vehicles and computers, for a total value of USD 791,684. 105 schools were rehabilitated for a total amount of USD 3.7 million. The rehabilitation included upgrading of toilet blocks and sanitation facilities. Furthermore, a total of 1,300 computers, printers and UPSs were provided

to public schools for a total value of USD 1.6 million, and all public schools were served with school-in-a-box stationary support. 270 public schools above 400m of altitude have received a contribution of fuel for heating to keep pupils in warm classrooms during the 2013-14 school year. For winter 2014-15, support will be increased to reach 600 schools, which will receive fuel for heating worth USD 1 million.

For the academic year 2013-2014, a two-shift system was introduced in 80 schools across Lebanon to accommodate the increase in student population, representing a total investment of more than USD 19 million for academic year 2013-14.

This amount also covered payment of salaries teachers to teach in the afternoon shift. Partners also provided direct support to the most vulnerable Lebanese children. 33,043 Lebanese children benefited from access to formal and non-formal learning programmes. Support was provided through payment of the enrolment fees for 24,600 Lebanese students in public schools, totalling USD 3,400,390 for 2013-2014 school year and non-formal education programmes. Also, investments were made to provide school supplies to Lebanese children, for a total amount of USD 1,275,000.





## BEFORE

*El Khodr Intermediate Public School – Baalback*  
Photo credits: UNICEF



## AFTER

### KEY NUMBERS:

**2,688**

TEACHERS AND EDUCATION STAFF  
TRAINED

**93**

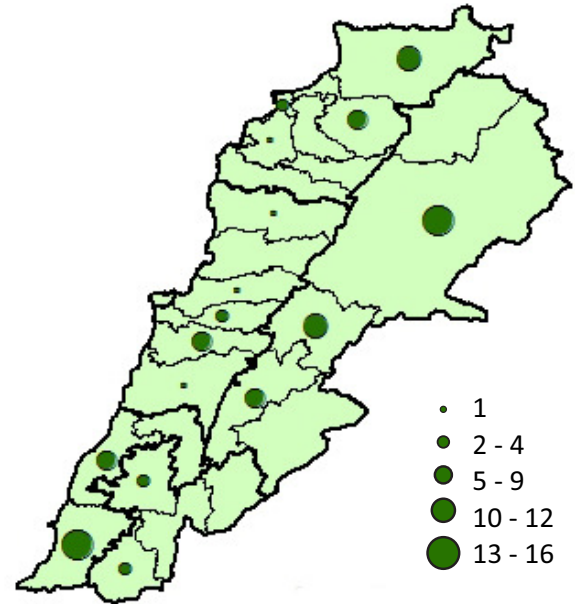
SCHOOLS REHABILITATED

**33,043**

LEBANESE CHILDREN ACCESSED  
FORMAL AND NON-FORMAL  
LEARNING PROGRAMMES

**\$ 67.5 m**

REQUESTED BY THE EDUCATION  
SECTOR FOR STABILIZATION  
ACTIVITIES IN 2015



*Number of schools rehabilitated per Qaza*

## 2015 NEXT STEPS

### Education in the Lebanon Crisis Response Plan

For 2015, the Education sector plan is built around the RACE plan and includes support to formal education and additional activities that meet the increasing educational needs in the country. The sector will continue to rehabilitate and equip public schools, including with water, sanitation and hygiene facilities responding to the specific needs of girls and boys. Second shift will be extended to 57,000 children in 2014-15, with a support of USD 34.2 million to the Ministry of Education to cover teacher salaries and running costs. In the first shift, the Ministry will be supported with USD 16 million to cover the marginal cost of education for Syrian refugee children. In addition, school supplies will be provided to all schools, benefitting 136,000 Lebanese children. Tuition fees for more than 6,000 vulnerable Lebanese will be covered and the capacity of 14,176 teachers will be reinforced through training and supply of teaching materials.



# MUNICIPAL & COMMUNITY SUPPORT



# PROGRAMMES & LIVELIHOODS

The sector aims to support the most affected municipalities and communities by enhancing services to reduce the impact of the refugee presence and the tensions and stress from the impact of the Syrian conflict, particularly through the provision of basic services and the improvement of self-reliance and livelihoods.

## RESULTS TO DATE

Efforts have focused on supporting host communities and municipalities to cope with the impact of the demographic, social and economic shocks of the Syrian conflict. 244 municipal and community support projects, addressing the immediate needs of host communities and sources of tension, were completed or are nearing completion in 197 communities, where 1.25 million Lebanese reside. Through these projects, USD 20.2 million has been invested to meet priorities of water supply, waste management, infrastructure, health, education and livelihoods which were identified as possible sources of tension at the community level.

Municipal and community support projects are identified

collaboratively with municipalities, communities and line ministries to produce rapid results. They have helped to reduce the added strain of the large presence of refugees on basic services, livelihoods, and natural resources at the community level. Also, many projects have brought services to the community that had been required prior to the crisis.

In addition, the sector places a strong emphasis on facilitating participatory processes at the local level for host communities and local institutions to discuss priority needs and identify and mitigate sources of tensions. 84 local committees were established in 2014, all of which will yield further project identification and development to respond to priority needs and prevent potential conflict.

## KEY NUMBERS:

244

MUNICIPAL AND COMMUNITY SUPPORT PROJECTS IMPLEMENTED IN 2014 FOR USD 20.2.

\$ 20 m

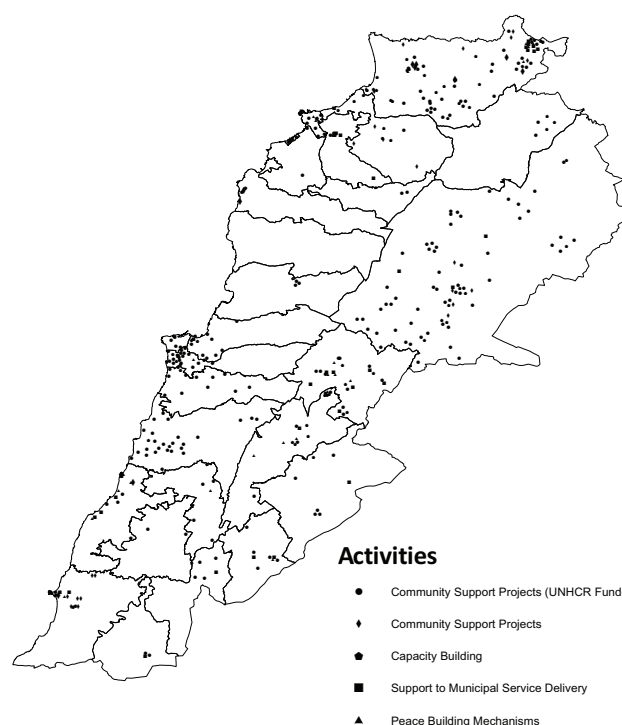
INVESTED TO MEET PRIORITY NEEDS OF HOST COMMUNITIES.

\$ 284.3 m

REQUESTED BY THE SECTOR FOR STABILIZATION ACTIVITIES IN 2015. VULNERABLE LEBANESE BENEFITTING FROM IMPROVED ACCESS TO WASTE WATER FACILITY

145,000

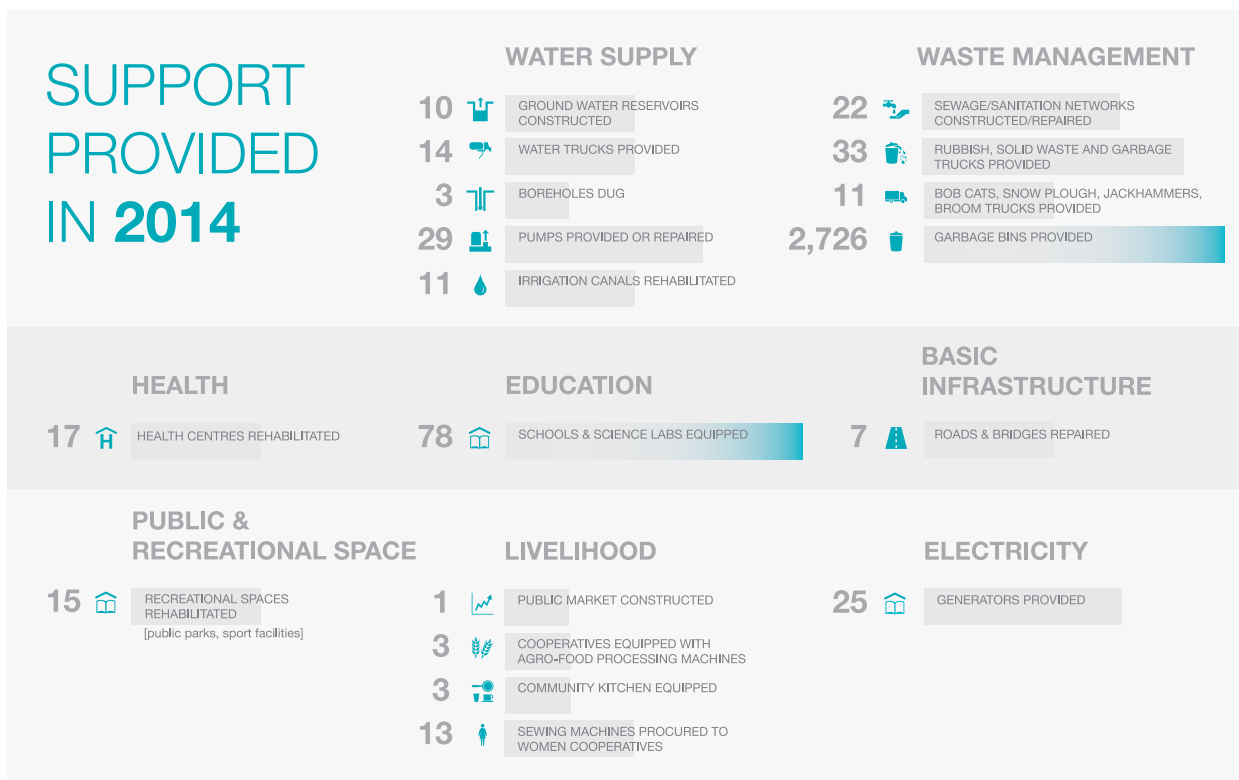
LEBANESE TARGETED FOR LIVELIHOODS PROGRAMMES IN 2015.



Support to municipalities in 2014

The Ministry of Social Affairs has played a key role in this respect and leads the implementation of 'maps of risks and resources' in an additional 100 municipalities, a participatory exercise which enables host communities and municipalities to jointly draft multi-sector action plans to build on existing community resources to address the key challenges and main risks in the community.

Despite the recognition towards maintaining and improving livelihoods and jobs creation of Lebanese families that have been severely impacted, only limited donor funding was made available to programmes that promote job creation for Lebanese women and men. 2,272 Lebanese benefitted from income generation opportunities and 4,328 Lebanese benefitted from vocational training support in 2014.



## 2015 NEXT STEPS

### Municipal and Community Support and Livelihoods in the Lebanon Crisis Response Plan

In 2015, the support to municipalities will be scaled up through larger projects that will aim to reduce the pressure on public services. The sector will support up to 200 municipalities, 12 Unions of Municipalities and 38 Social Development Centres to respond to the crisis and to rising tensions and pressures on basic services, through capacity building and the implementation of 550 municipal and community support projects. USD 114 million has been requested to implement these priority projects. A further USD 8 million has been requested to strengthen the capacity of national government institutions to mitigate tensions, including the Ministries of Interior and Municipalities, Social Affairs, Education and Higher Education, and the security forces.

Job creation has been prioritized through rapid employment initiatives; programmes for micro, small and medium enterprises, notably developing the skills of Lebanese youth to match market demands; and support to the Government in promoting local economic development. 97,700 Lebanese will be engaged in rapid income generation initiatives, rehabilitating infrastructure and other community priorities in 200 villages. Also, USD 37.7 million has been requested to support 5,000 micro, small and medium enterprises to create up to 10,000 new jobs for Lebanese, through provision of business management training, financial services, start-up grants, and technology transfer. In addition, the sector will support upgrading of twenty value chains. Finally, USD 13.6 million is requested to support the Ministries of Social Affairs, Economy and Trade, Industry, Labor, and Education and Higher Education to develop and implement policies and plans supporting job creation and livelihoods.





# PROTECTION, CHILD PROTECTION, AND SEXUAL AND GENDER-BASED VIOLENCE

The aim of the Protection sector is to strengthen community empowerment and outreach and provide assistance to persons with specific needs. Child Protection partners aim to protect all vulnerable children from violence, exploitation, abuse, and neglect through equitable access to services. Sexual and Gender-Based Violence (SGBV) partners aim to strengthen services, systems and policies to prevent and respond to sexual and gender-based violence.

## RESULTS TO DATE

The sector has increased provision of social services in Lebanon through support to the Ministry of Social Affairs social development centres, the establishment of case management systems and the development of a strategy to ensure that women and children are protected from violence, exploitation, and abuse.

66 Social Development Centers affiliated with the Ministry of Social Affairs received aid valued at USD 2.5 million to provide psychosocial support, counseling and referral services to both Lebanese and refugees. The capacity of social workers within these Social Development Centers has been strengthened through mentoring, coaching, and training programmes.

28 Community Development Centres were set up to provide safe and public spaces for community members to access information, learn through education, attend skill-building classes and meet for social and recreational activities.

Case management systems and tools are being developed and strengthened with the Ministry of Social Affairs, with technical guidance and support from Child Protection and SGBV actors. The use and implementation of such tools will improve delivery of these services to children in need throughout Lebanon. A consistent component of SGBV programming has been capacity building of institutions, national organizations, services providers and frontline workers. On average, 200 services providers and frontline workers were trained each month, approximately 85 per cent of them Lebanese nationals. Training has also been provided to frontline workers on the prevention of and response to gender-based violence. 254 health service providers from 29 health facilities were trained on the clinical management of rape. A comprehensive training package is offered on medical protocol and knowledge on SGBV, other services available for survivors, attitudes and beliefs. The emergency child protection emergency case management system has sought to mitigate risks and prevent incidents of violence, exploitation, abuse, and neglect. Over 2,000 social workers were provided with

## THE MINISTRY OF SOCIAL AFFAIRS NATIONAL PLAN TO SAFEGUARD CHILDREN AND WOMEN IN LEBANON

Child Protection and SGBV partners supported the Ministry of Social Affairs in developing the National Plan to Safeguard Children and Women in Lebanon, officially launched in October 2014. The plan will support 57 selected Social Development Centers to provide psychosocial support services for children and women, safe spaces for women and girls, and adolescent-friendly services, including life skills education, assistance to survivors, information on how to access basic and specialized services including health, education and protection.

DIRECT BENEFICIARIES	CAPACITY BUILDING TARGETS	INSTITUTIONAL TARGETS
<b>198,012</b> ADOLESCENTS & CHILDREN	<b>475</b> FRONTLINE WORKERS TRAINED ON CHILD PROTECTION & GBV PREVENTION & RESPONSE	<b>57</b> SDCs IN 5 GOVERNORATES
<b>20,000</b> WOMEN		<b>13</b> SDCs WITH SPECIALIZED CASE MANAGEMENT TOOLS
<b>34,200</b> CAREGIVERS RECEIVE PSYCHOSOCIAL SUPPORT	<b>130</b> PROFESSIONALS TRAINED ON CHILD PROTECTION CARE MANAGEMENT IN 13 LOCATIONS	<b>10</b> SDCs WITH GBV PREVENTION & MANAGEMENT TOOLS
<b>410,400</b> INDIVIDUALS ACCESS INFORMATION, ORIENTATION & REFERRAL SERVICES	<b>1,327</b> SERVICE PROVIDERS & COMMUNITY MEMBERS TRAINED ON CHILD PROTECTION, GBV & REFERRAL PATHWAYS	<b>42</b> SDCs WITH DAYCARE FACILITIES
<b>265,000</b> INDIVIDUALS BENEFIT FROM IMPROVED HEALTH SERVICES		

coaching and mentoring to discuss the highly difficult and complex cases they are responsible for in trying to assist children exposed to multiple risks and vulnerabilities.

All of these initiatives will leave an enduring contribution to Lebanon's child protection framework and instruments to protect SGBV survivors and women-at-risk.

The sector also has addressed the protection needs of vulnerable Lebanese as most community empowerment activities and all child protection and SGBV services are already fully available to Lebanese children, women and men.

- In 2014, almost 21,000 Lebanese benefitted from services provided by the Social Development Centres every month; more than 5,000 Lebanese benefitted from life skills training.
- Since January, more than 6,000 Lebanese women and girls visited one of the 70 safe areas/facilities established across Lebanon to allow them to safely seek support and/or disclose violence. Women and girls have seized the possibility to access information about services, and increase their knowledge on topics, such as sexual and reproductive health, child care, or human rights.
- The ability to access services is also linked to awareness raising activities. More than 18,000 Lebanese have benefited from information dissemination and sensitization campaigns.
- Support has been provided to 2,500 Lebanese women and girls through distribution of dignity kits to ensure that women and adolescent girls have basic hygiene, clothing, and protection items to support their daily

mobility and function.

- 30,568 Lebanese children participated in psychosocial support offered by child protection actors, and 10,408 Lebanese caregivers benefited from psychosocial support programmes aimed at helping parents and guardians better support the wellbeing of their families and children.
- At least 439 Lebanese children at risk of violence, neglect, exploitation, and abuse received individual assistance through the emergency child protection case management system.
- Over 2,800 Lebanese persons were provided with individual legal counselling.

## KEY NUMBERS:

**66**

SOCIAL DEVELOPMENT CENTERS HAVE RECEIVED SUPPORT TO PROVIDE SOCIAL SERVICES TO LEBANESE AND DISPLACED PERSONS.

**6,000**

LEBANESE WOMEN AND GIRLS USED SGBV SERVICES

**30,568**

LEBANESE CHILDREN BENEFITED FROM PSYCHOSOCIAL SUPPORT

**\$ 48 m**

SECTOR FOR STABILIZATION ACTIVITIES IN 2015.

## 2015 NEXT STEPS

### Protection, Child Protection and SGBV in the Lebanon Crisis Response Plan

The funding requirement for protection activities includes USD 48 million for interventions that directly contribute to the strengthening of systems and capacity of institutions. Most of these funds are requested for community empowerment activities. In 2015, the target population for community empowerment activities includes over 90,000 Lebanese adults. Nearly 107,000 Lebanese children and 22,000 Lebanese caregivers will receive psychosocial support programmes, while 24,000 Lebanese adolescents will participate in life-skills programmes. The government and public institutions will continue to be supported through the following:

- Coaching of 784 social workers of the Ministry of Social Affairs.
- Capacity development and support to community-based organizations and 76 Social Development Centers (infrastructure, staffing, equipment).
- Capacity development for 1,150 judiciary, legal, security and health actors.
- The development and endorsement of national guidelines for alternative care arrangements for children in Lebanon, including minimum standards for institutions providing interim care, such as emergency shelters and orphanages.
- The endorsement by the Ministry of Social Affairs and the Ministry of Justice of the operating protocols for the national case management system, which will complement but exceed the breadth and scope of the emergency system already endorsed.
- The development and endorsement of a national information management system that will support the confidentiality and efficiency of the case management system by providing a centralized, electronic database for all children being provided care within the case management system.
- The development of a national curriculum on child protection intended for social workers to strengthen the skills of professionals working in public institutions.



# FOOD SECURITY

The objective of the sector is to ensure food security for refugees from Syria and vulnerable Lebanese; and, to restore agricultural livelihoods of vulnerable rural Lebanese communities.

## RESULTS TO DATE

In November 2014, implementation of the e-card food assistance programme under the emergency National Poverty Targeting Programme (NPTP) began, targeting 27,200 vulnerable Lebanese. This service is modelled on the e-card food assistance programme for refugees from Syria, and allows families to buy food in designated shops. As part of this initiative, the food security sector is training over 80 officials and social workers from the Ministry of Social Affairs and representatives from the Presidency of the Council of Ministers in e-card service delivery, pre assistance and post-distribution monitoring.

**This emergency component of the National Poverty Targeting Programme will continue in 2015 and expand to reach up to 33,000 beneficiaries<sup>6</sup>.**

Social safety nets, like the National Poverty Targeting Programme, play a crucial role in helping the most vulnerable households and communities to manage risks and cope with shocks, such as the impact of the Syrian crisis and the increase in population density.

Lebanese local economies are positively impacted by the provision of food assistance to refugees from Syria. In fact, e-cards offer a quick and efficient mechanism to deliver food assistance to beneficiaries.

**A WFP study dated July 2014 indicated that this system has resulted in a doubling of revenues in 300 participating stores and the creation of 1,300 jobs.**

In addition, the input-output model suggested that the multiplier is 1.51 in the food products sector. . In 2014, refugees from Syria spent a total of USD 272 million

through e-cards in over 380 designated Lebanese owned shops across the country as part of the food assistance programme.

**With respect to restoring agricultural livelihoods, Lebanese rural communities benefited from a national blanket livestock vaccination of 95 per cent of all cattle, goat and sheep between April and August 2014.**

Farmers from the Bekaa, North Lebanon and South Lebanon stated that the support was crucial for them to keep their cattle alive. The vaccines and drugs provided led to a decrease in diseases and encouraged farmers to buy more cattle<sup>7</sup>.

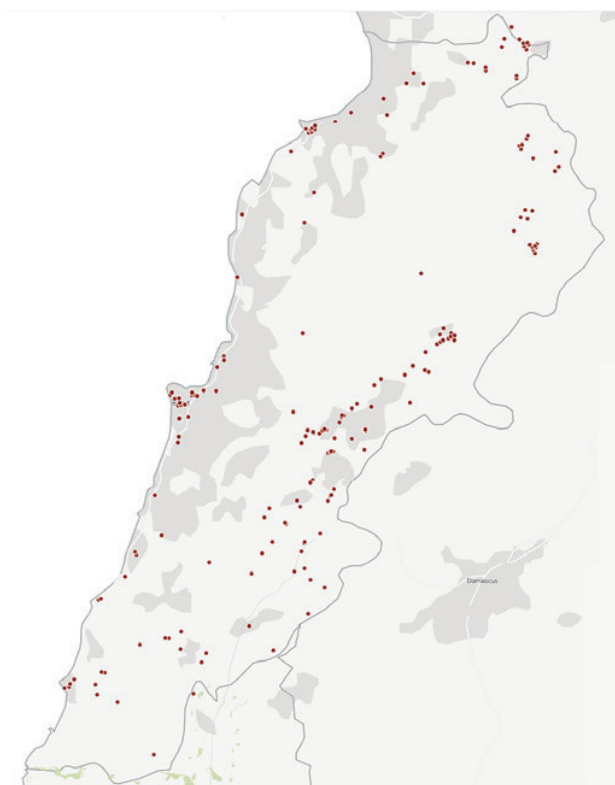
In addition, over 1,200 metric tons of concentrated livestock feed and veterinary medicines were distributed to 900 vulnerable Lebanese small-scale livestock herders in North Lebanon. The project also involves 160 veterinary professionals to train livestock owners to improve surveillance and control of Trans-boundary Animal Diseases. Finally, 37 dairy cooperatives serving 3,500 farmers received technical training and equipment and 300 women were trained on processing of dairy products and were provided with basic equipment.



*Veterinary expert vaccinating a cow during the animal vaccination campaign*  
Photo credits: FAO

(6) This project is a joint collaboration between humanitarian agencies and the World Bank and the Government of Lebanon.

(7) Source: Quotes from the FAO documentary movie "The Power of Resilience", November 2014.  
([https://www.youtube.com/watch?v=93l3inPrmPl&feature=em-upload\\_ownerGrazing](https://www.youtube.com/watch?v=93l3inPrmPl&feature=em-upload_ownerGrazing))



Food Security Map of WFP contracted Shops

## KEY NUMBERS:

**1,300** JOBS CREATED IN STORES PARTICIPATING IN FOOD ASSISTANCE

**95 %** OF ALL CATTLE IN LEBANON VACCINATED

**\$ 62.4 m** REQUESTED BY THE FOOD SECURITY SECTOR FOR STABILIZATION ACTIVITIES IN 2015



Lebanese woman receiving an e-card to benefit from food assistance under the NPT

Photo credits: WFP

## 2015 NEXT STEPS

### Food security in the Lebanon Crisis Response Plan

The Food Security sector is requesting USD 62.4 million under the stabilization component. The Food Security sector will continue to support the Government of Lebanon in scaling up of the National Poverty Targeting Programme monthly food assistance component for vulnerable Lebanese, through capacity development and the e-card system. The Government of Lebanon has appealed for funding to reach an additional 78,000 vulnerable Lebanese with food assistance by December 2015. The number of shops participating in the food assistance programme will be expanded to 1,000 by the end of 2015. The sector will continue to work with the Ministry of Agriculture to enhance food safety measures and policies and expand its programmes to support rural Lebanese communities to improve the resilience and food security of affected Lebanese farmers through:

- Enhancement of the food safety measures and policies and upgrade of its programmes.
- Promotion of sustainable family farming so as to increase productivity, while carefully managing available natural resources, such as water and land. The sector plans to train 35,450 Lebanese small-scale farmers in climate smart agriculture technologies (such as conservation farming) and food safety and quality standards.
- Training of 18,350 individuals in post-harvest handling and preservation/processing of agricultural products.
- Analysis of local food assistance-linked value chains and promotion of access to retail markets by vulnerable local farmers.
- Training of 9,600 Lebanese individuals on good nutritional practices.





The shelter sector aims at providing housing solutions for refugees; in doing so, it also significantly benefits Lebanese communities.

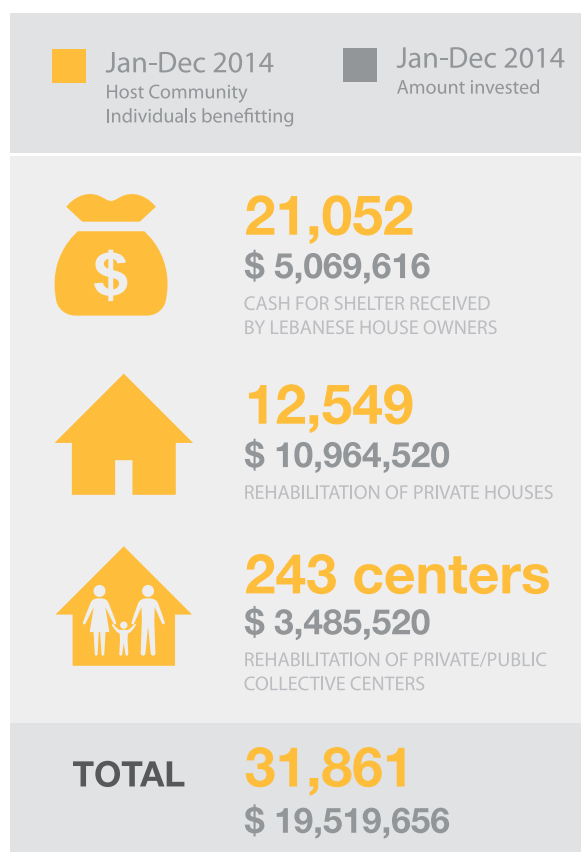
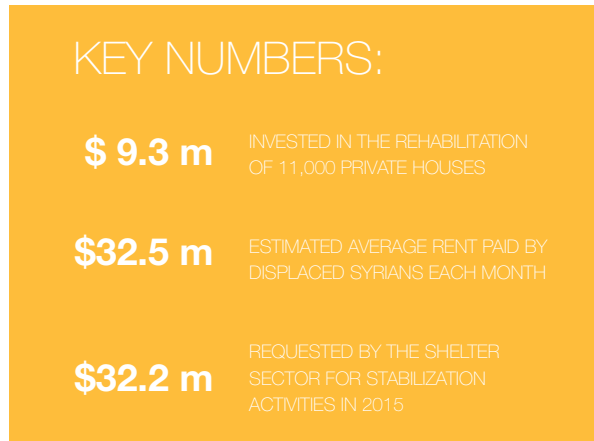
## RESULTS TO DATE

Over 11,000 apartments and houses privately owned by Lebanese to accommodate refugees from Syria were rehabilitated. A host-house is rehabilitated in exchange for free or reduced rental for a specific duration. This is a win-win agreement whereby vulnerable refugees have easier access to affordable and adequate shelter, while host communities benefit from more suitable housing in the longer term.

In addition, in 2014, 243 large public or private buildings used as collective centres for refugees were rehabilitated.

In a non-camp context like Lebanon, the majority of refugees rent their accommodation from Lebanese house owners. From January until late October 2014, over 21,000

Lebanese house owners received USD 5 million in rental support, which was extended by international partners to the most vulnerable refugees to cover their rent. In addition, Lebanese house owners receive approximately USD 32.5 million per month directly from Syrians who pay rent from their own resources (USD 390 million in 2014).



## 2015 NEXT STEPS

### Shelter in the Lebanon Crisis Response Plan

In 2015, the sector will expand its focus to upgrading the living environment of poor Lebanese. This will be done through an integrated neighbourhood approach targeting densely populated urban and semi-urban settlements, which will benefit from upgrade of basic infrastructure, such as sidewalks, roads, and public spaces. Work will continue on the rehabilitation of private and public buildings and private houses owned by Lebanese. Furthermore, Lebanese house owners will continue to receive the rental support that is being extended to the most vulnerable displaced persons from Syria.





New water reservoirs under construction in Chouf  
Photo credits: ACTED





*Farmers work inside a farmer's cooperative nursery in the village of Tal Abbas in Akkar, north of Lebanon  
Photo credits: UNDP*



*Screening borghol at a women's cooperative in Bint Jbeil, South Lebanon  
Photo credits: UNDP*



*Renovation of Fish market in Sarafand, South Lebanon  
Photo credits: UNDP*

**CONTACT:**

---

Luca Renda: [luca.renda@undp.org](mailto:luca.renda@undp.org)

