



Inter Agency Meeting – 6 March 2015



AGENDA

- 1. Registration / UNHCR**
- 2. Protection / MOSA & UNHCR**
- 3. MoPH municipality initiative on WASH / MoPH**
- 4. Assessment working group update / OCHA & UNHCR**
- 5. Food Assistance update / MOSA & WFP**



AGENDA

- 1. Registration / UNHCR**
- 2. Protection / MOSA & UNHCR**
- 3. MoPH municipality initiative on WASH / MoPH**
- 4. Assessment working group update / OCHA & UNHCR**
- 5. Food Assistance update / MOSA & WFP**



Registration as of 4 March 2015

26 days waiting period



1,179,937

Total

1,169,246

Registered

10,691

Awaiting



Registration in February

☐ Registration

- Close to 14,000 registered vs. 11,500 in Jan.
- Increase is mainly of long-stayers and not new comers.

☐ Appointments Requested

- Close to 15,000 appointments requested vs. 14,000 in Jan.
- Most likely due to residency renewal requirements.



Profile of Registered in January

❑ Family Composition: Jan. vs. Feb

Family composition in January 2015	Jan	Feb
Households	3,169	4,913
Female-Headed	29.5%	17%
Male-Headed	70.5%	83%
Single females	10%	7%
Single males	32%	46%

✓ 20% single males and 61% Male Headed in December 2014

❑ Arrival to Lebanon: Jan. vs. Feb

- ✓ In the same month: 6% vs. 4%
- ✓ In the past 1-5 months: 58% vs. 41%
- ✓ In the past 6-12 months: 18% vs. 28%
- ✓ Pre 12 months: 18% vs. 27%



Key Points

- New arrivals very low
- New registration is mostly of 'long-stayers'
- New registration expected to further decrease
- Overall population stabilized



AGENDA

1. Registration / UNHCR
2. Protection / MOSA & UNHCR
3. MoPH municipality initiative on WASH / MoPH
4. Assessment working group update / OCHA & UNHCR
5. Food Assistance update / MOSA & WFP



PROTECTION

Renewal of residency

- GSO circular of 22 January provides that Syrians registered with UNHCR can renew their residence permit for six months:
 - Payment of USD 200 fee
 - Housing commitment signed by landlord and stamped by mukhtar (+ certified copies of landlord's ID and lease agreement)
 - Notarised pledge not to work
 - Pledge to leave Lebanon at the expiration of the permit or when requested by concerned authorities
 - UNHCR registration certificate valid for at least six months



PROTECTION

Renewal of residency

- GSO circular of 22 January provides that Syrians not registered with UNHCR must have Lebanese sponsor to renew for six months
- If resided in Lebanon one year, pay fee of USD 200 and provide:
 - Personal pledge of responsibility signed by the Lebanese sponsor;
 - Extract of the family Civil Registry Record of the Lebanese sponsor;
 - “Housing Commitment” signed by the landowner in the area of residence;
 - Copy of ID of the landowner signed and stamped by the Mukhtar; and,
 - Copy of the title deed (evidencing the right of ownership) or lease agreement signed and stamped by the Mukhtar.



PROTECTION

Evictions

- In February, 16 settlements in central and west Bekaa received eviction notices from the LAF
- In total, 40 settlements have received eviction notices in 2015
- Complete eviction of 6 settlements and partial eviction of 4 others, 2,700 individuals affected
- Over 7,000 individuals in 30 settlements remain at risk of eviction
- In February, additional 300 persons were evicted in separate events in Mt Lebanon and Tripoli
- No evictions in Bekaa over last two weeks
- Evictions Committees in the field coordinate response activities
- Discussions at Beirut level is ongoing - ensure adequate consultation and support to identify alternative solutions



AGENDA

1. Registration / UNHCR
2. Protection / MOSA & UNHCR
3. **MoPH municipality initiative on WASH / MoPH**
4. Assessment working group update / OCHA & UNHCR
5. Food Assistance update / MOSA & WFP



The Spread of Waterborne Diseases: An Intersectoral Concern

Ministry of Public Health
March 2015



Chosen Municipalities

1. Bebnine
2. Minieh
3. Bhannine
4. Temnine el Faouqa
5. Saadnayel
6. Majdel Anjar
7. Joub Jannine



Criteria for choosing the municipalities for the pilot

- Number of cases of water-borne diseases: Hepatitis A, dysentery, typhoid fever
- Density of Syrian refugees
- Vulnerability of the cadastral (according to UNHCR criteria)
- Connection to water establishment networks (priority to non-connected cadastrals)
- Willingness of the municipality to cooperate
- Geographical distribution
- Political clearance



Rationale

- Relatively **high incidence of water-borne diseases** necessitates quick response to contain the outbreaks and prevent further outbreaks
- **Necessity of systematically engaging municipalities in planning and prioritizing WASH interventions** within their territories, and even implementing them where possible, as a crucial step **towards sustainability**.



Long-Term Objectives

- To empower municipalities with skills and resources to deal with WASH issues
- To reinforce the **sense of responsibility** at municipality level for the health and safety of their constituencies
- To ensure the **sustainability** of WASH interventions after humanitarian actors have left



Short-Term Objectives

- To contain and reduce the incidence of water-borne diseases
- To ensure the prioritization of WASH interventions according to public health needs
- **To work with and through municipalities to meet the above objectives.**



Planned Activities

(pending stakeholders cooperation)

- Information sessions (North + Bekaa)
 - Explain concept
 - Secure buy-in
 - Identify workshop participants
- Municipal Workshops
 - Mapping existing WASH services
 - Identifying health hazards
 - Output → Action plan



Progress so far

- **WASH working group & WHO** support in preparing the material for the workshops
- **Unicef** expressed interest in funding, awaiting MoPH proposal
- **MoIM** issued a letter to the concerned municipalities to cooperate with MoPH
- **MoEW** has not responded to our letter asking for the cooperation of Water Establishments



A Call for WASH Partners

- To involve municipalities at ALL stages of WASH interventions **planning**
- To involve municipalities in **implementation** of WASH interventions (LCRP WASH funding to be directed to municipalities where possible)



AGENDA

1. Registration / UNHCR
2. Protection / MOSA & UNHCR
3. MoPH municipality initiative on WASH / MoPH
4. **Assessment working group update / OCHA & UNHCR**
5. Food Assistance update / MOSA & WFP



Assessment Working Group

TORs and Responsibilities



ISSUES

- Lack of assessments standards, methodologies and tools
- Duplications leading to assessment fatigue, gaps
- Lack of harmonized methodology for rapid needs assessments
- Inadequate sharing of assessments results and data collected





OBJECTIVES

1. Strengthen assessment coordination
2. Enhance sharing and dissemination of information
3. Strengthen technical capacity and preparedness
4. Increase advocacy, awareness raising and resource mobilization





PARTICIPATION TO THE AWG

Open to all partners with technical expertise in needs assessments!!!

NEXT MEETING ON 13 March @ OCHA – 3:30pm





WORKPLAN

Includes:

- Establish an harmonized rapid needs assessment structure, methodology and procedure
- Capacity building on coordinated needs assessment and Multi-sector Initial Rapid Needs Assessment
- Support multi-sector/agency coordinated assessments





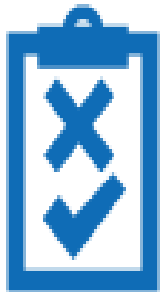
ALL PARTNERS ARE INVITED TO

- Consult the Needs Assessment Registry before planning an assessment
- Inform Sector Leads and AWG of the assessments conducted and being planned
- Register Assessment planned in the Registry
- Collaborate with other partners to reduce duplication and improve coverage



Needs Assessment Registry

By the Assessment Working Group
of the Information Management Working Group



PURPOSE?

Facilitate planning and utilize existing information:

- Open access to information about assessments
- Coordinate planned activities
- Lessen duplication and collaborate with other partners
- Request assistance by the AWG



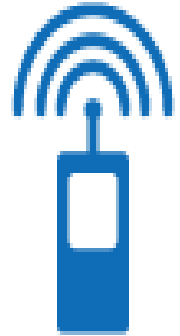
HOW TO REGISTER YOUR ASSESSMENT?

- Request access to fambri@unhcr.org
 - Upload document and describe your assessment online
- information is publicly available on data.unhcr.org/lebanon

Needs Assessment Registry			
Title	Status	Organizations	Last Updated
Living Conditions Assessment T5 04 Nov 2014	Data collection finished 12 Nov 2014	Solidarites International Lebanon	22 Dec 2014
Psychosocial Support and Sexual and Gender-based Violence 21 Jul 2014	Data collection finished 31 Oct 2014		20 Oct 2014
Livelihood Assessment in Chouf, Mount Lebanon, Lebanon 15 Oct 2014	Data collection started 01 Oct 2014	PU-AMI Lebanon	15 Oct 2014
Altering risk practice: Formative research in health promotion 09 Oct 2014	Data collection started 22 Sep 2014	PU-AMI Lebanon	15 Oct 2014
WASH Needs Survey 06 Jul 2014	Published	CISP - Lebanon	13 Oct 2014
NFI 2014 -15 Winterisation Baseline Survey 10 Oct 2014	Planned	UNHCR Lebanon	10 Oct 2014

FOR ASSISTANCE OR INFORMATION CONTACT:

- Typhaine Gendron: gendron@un.org
- Remo Fambri: fambri@unhcr.org





Assessment Working Group

TORs and Responsibilities



ISSUES

- Lack of assessments standards, methodologies and tools
- Duplications leading to assessment fatigue, gaps
- Lack of harmonized methodology for rapid needs assessments
- Inadequate sharing of assessments results and data collected





AGENDA

- 1. Registration / UNHCR**
- 2. Protection / MOSA & UNHCR**
- 3. MoPH municipality initiative on WASH / MoPH**
- 4. Assessment working group update / OCHA & UNHCR**
- 5. Food Assistance update / MOSA & WFP**



Contingency Planning for food assistance due to unexpected funding shortfalls

- Following December experience, an inter-agency sub-technical WG was formed to mobilise humanitarian agencies to respond to the situation & mitigate impact
- Funding shortfall scenarios were based on WFP's planning scenarios (50%, 25% & 13%)
- Scenarios specify targeted population group(s) and level of voucher value (food basket coverage)

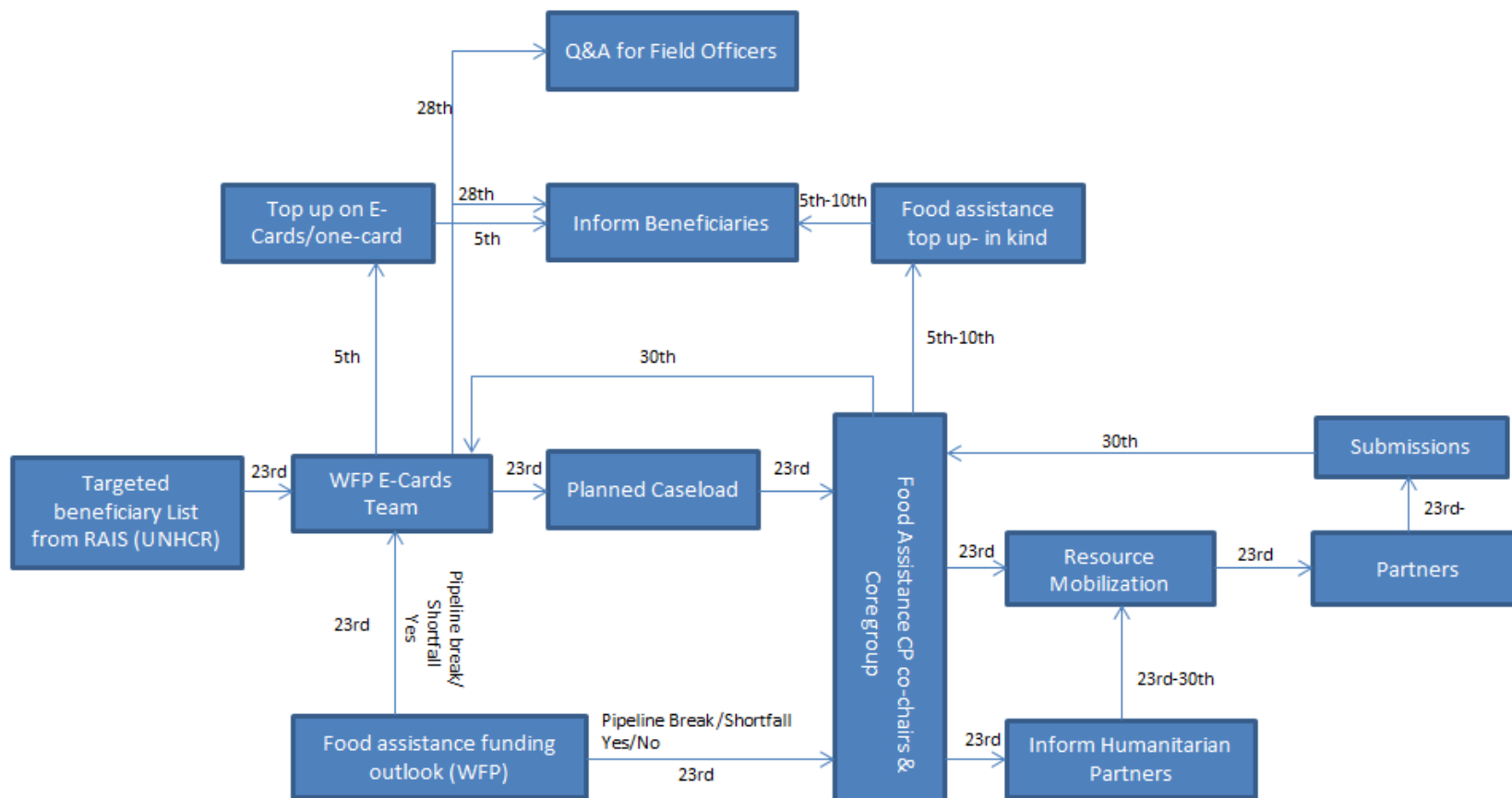
Sub-technical WG established a CP that includes:

- A matrix calculating the gaps under each scenario
- SOPs outlining roles & responsibilities, activities and timeline
- Technical guidance note for agencies' complementary activities

The matrix will be populated with agencies' contributions towards mitigation of possible consequences of unexpected FA funding shortfalls

Contingency Plan Activation Flow Chart

Annex 1: Schema- Contingency Plan Activation Sequence/Flow Chart



Sub-technical WG Action Plan

- Map all local/international NGOs which could potentially be mobilized to cover gaps
- Presenting CP to senior management at the IA meeting and HCT levels - WFP has made a reference to it at last HCT
- Next steps: present the CP exercise to the regional IA meetings
- Further review of the SOPs based on agency feedback

Questions?

Thank You!

