

SYRIA REFUGEE RESPONSE

LEBANON South and El Nabatieh Governorates

Distribution of the SHC and PHC Network

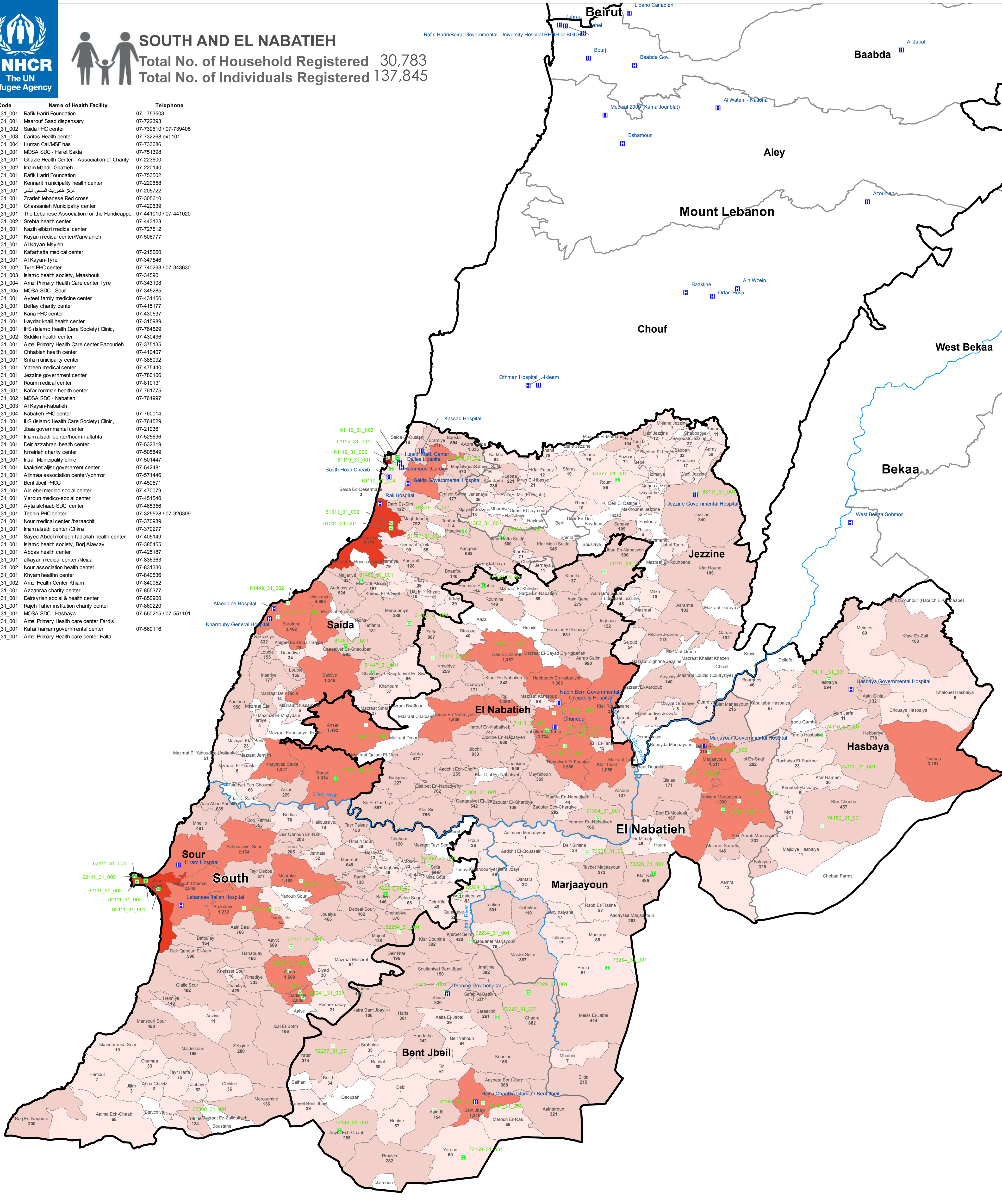
As of 31 January 2015



SOUTH AND EL NABATIEH

Total No. of Household Registered 30,783
Total No. of Individuals Registered 137,845

P_Code	Name of Health Facility	Telephone
61115_31_001	Rafik Hariri Foundation	07 - 753503
61119_31_001	Maarouf Saad dispensary	07-722393
61119_31_002	Saida PHC center	07-739610 / 07-739405
61119_31_003	Caritas Health center	07-732268 ext 101
61119_31_004	Human Call/MSF has	07-733686
61159_31_001	MOSA SDC - Haret Saida	07-751398
61311_31_001	Ghazie Health Center - Association of Charity	07-223600
61311_31_002	Inam Mehdi - Ghazieh	07-220140
61335_31_001	Rafik Hariri Foundation	07-753502
61347_31_001	Kennant municipality health center	07-220858
61383_31_001	مركز خضورية الصبر الداني	07-205722
61427_31_001	Zrarieh lebanese Red cross	07-305610
61447_31_001	Ghassanieh Municipality center	07-420639
61449_31_001	The Lebanese Association for the Handicape	07-441010 / 07-441020
61449_31_002	Srebtia health center	07-443123
61451_31_001	Nazih elbizri medical center	07-727512
61463_31_001	Kayan medical center/Marwanieh	07-506777
61469_31_001	Al Kayan-Meyleh	
61493_31_001	Kafarhatta medical center	07-215660
62111_31_001	Al Kayan-Tyre	07-347546
62111_31_002	Tyre PHC center	07-740293 / 07-343630
62111_31_003	Islamic health society, Maashouk,	07-345901
62111_31_004	Amel Primary Health Care center Tyre	07-343108
62111_31_005	MOSA SDC - Sour	07-345285
62217_31_001	Ayteet family medicine center	07-431156
62221_31_001	Belfay charity center	07-415177
62229_31_001	Kana PHC center	07-430537
62231_31_001	Haydar khail health center	07-315989
62241_31_001	IHS (Islamic Health Care Society) Clinic,	07-764529
62241_31_002	Siddikin health center	07-430436
62246_31_001	Amel Primary Health Care center Bazourieh	07-375135
62254_31_001	Chhabieh health center	07-410407
62266_31_001	Srifa municipality center	07-385092
62308_31_001	Yareen medical center	07-475440
63111_31_001	Jezzine government center	07-780106
63277_31_001	Roum medical center	07-810131
71111_31_001	Kafar romnan health center	07-761775
71111_31_002	MOSA SDC - Nabatieh	07-761997
71111_31_003	Al Kayan-Nabatieh	
71111_31_004	Nabatieh PHC center	07-760014
71113_31_001	IHS (Islamic Health Care Society) Clinic,	07-764529
71211_31_001	Ibaa governmental center	07-210361
71266_31_001	Inam alsadr center/houmin altahta	07-525636
71311_31_001	Deir azzahrani health center	07-532319
71327_31_001	Nmerieh charity center	07-505849
71361_31_001	Insar Municipality clinic	07-501447
71381_31_001	kaakalet aljir government center	07-542481
71394_31_001	Alimaa association center/yohmor	07-571446
72111_31_001	Bent Jbeil PHCC	07-450571
72143_31_001	Ain ebel medico social center	07-470079
72159_31_001	Yaroun medico-social center	07-451540
72183_31_001	Ayia alchaab SDC center	07-465356
72211_31_001	Tebnin PHC center	07-325528 / 07-326399
72227_31_001	Nour medical center /baraachit	07-370989
72229_31_001	Inam alsadr center /Chkra	07-370277
72234_31_001	Sayed Abdel mohsen fadiallah health center	07-405149
72264_31_001	Islamic health society, Borj Alawar	07-385455
72277_31_001	Abbas health center	07-425187
73111_31_001	akayan medical center /Meiaa	07-836363
73111_31_002	Nour association health center	07-831330
73159_31_001	Khyam health center	07-840536
73159_31_002	Amel Health Center Kham	07-840052
73228_31_001	Azzahraa charity center	07-855377
73230_31_001	Deirsyrian social & health center	07-850900
73234_31_001	Rajeh Taher institution charity center	07-860220
74111_31_001	MOSA SDC - Hasbaya	07-560215 / 07-551191
74116_31_001	Amel Primary Health care center Fardis	
74120_31_001	Kafar hamam governmental center	
74160_31_001	Amel Primary Health care center Helta	07-560116



Legend

- Secondary health care Center
- Primary health care Center
- Pcode of PHC: 72159_31_001
- Litani River
- Governorate
- Caza

No. of Refugees per Cadastral

- 0
- 1 - 100
- 100 - 1,000
- 1,000 - 5,000
- 5,000 - 10,000
- 10,000 - 15,000

The No. indicates the registered refugees at the cadastral level

Notes

The boundaries, names and designations used on this map do not imply official endorse United Nations. All data used are the best available at the time of map production.

Data Sources:

- Lebanese Border, Caza and Cadastral Boundaries: NPMPLT 2005.
- Geographic Projection WGS 1984

Registered Refugees Figures by UNHCR as of As of 31 January 2015.

For more information contact Rana G. Ksafi at ksafi@unhcr.org

GIS and Mapping by UNHCR. For Information and updates contact Jad Ghosn: ghosn@unhcr.org
Maroun Sader: sader@unhcr.org

NPMPLT: National Physical Master Plan for the Lebanese Territory

LOCATION DIAGRAM

