



## Daily Report

### Arrivals and Departures:

In Greece, some 1,419 people have arrived on the Islands after 20 March and have been accommodated in closed facilities. Capacity of these facilities is limited, as is service provision to date. On 22 March, there were a limited number of people arriving to Greece by sea in part due to strong gale force winds. These conditions are likely to continue through to 24 March.

As the border between Greece and the former Yugoslav Republic of Macedonia remains closed, 1,166 people of concern to UNHCR remain present in the former Yugoslav Republic of Macedonia, 2,000 in Serbia, 202 in Croatia, and 49 in Slovenia.



### Critical Developments

In light of current developments, UNHCR redefined its role in Greece. The UN Agency for Refugees has until now been supporting the authorities in the so-called "hotspots" on the Greek islands, where refugees and migrants were received, assisted, and registered. Under the new provisions, these sites have now become detention facilities. Accordingly, and in line with UNHCR's policy on opposing mandatory detention, UNHCR has suspended some activities at all closed centres on the islands. This includes provision of transport to and from these sites. However, UNHCR will maintain a presence to carry out protection monitoring to ensure that refugee and human rights standards are upheld, and to provide information on the rights and procedures to seek asylum. UNHCR staff will also continue to be present at the shoreline and sea port to provide life-saving assistance (including transport to hospitals where needed). UNHCR is counselling new arrivals on asylum in Greece, including on family reunification and on access to services as well as identifying people with specific needs.

Similarly, NGOs are also currently reassessing their roles. Media reports that MSF is withdrawing from 'hotspots' across Greece, including Lesbos. The Norwegian Refugee Council (NRC) has also decided to suspend some of its activities in the Vial hotspot in Chios; the organization is particularly concerned with the hotspot becoming a detention facility. NRC is also concerned by the detention of people with specific needs and the already dangerous overcrowding of the facility. Meanwhile, medical NGO Medecins du Monde has indicated that it will be pulling out of Eidomeni in northern Greece due to concerns for its staff, as a result of rising tensions at the site. Authorities are in the process of evacuating makeshift

### Condition of People:

In Greece, frustration and tension amongst refugees and migrants are on the rise on the islands and the mainland. In Eidomeni, two people attempted to immolate themselves as a sign of protest and were transferred to the hospital for appropriate care.

According to media sources, the Citizens' Protection Ministry confirmed that approximately 150 Afghan and Pakistani nationals who arrived at Piraeus Port were to be transferred to closed facility in Corinth while awaiting deportation to their countries of origin.

sites in Eidomeni, and identifying alternative temporary accommodation sites.

The Greek authorities are submitting a draft legislation to the Parliament in order to integrate some key elements of EU Directive on common procedures for granting and withdrawing international protection (EU Asylum Procedure Directive). It is a prerequisite to the implementation of the EU-Turkey agreement.

The Greek Ministry of Education has established a committee for the support of refugee children. The Committee will be responsible for the registration of refugee children and for the determination of their needs.

In an effort to decongest makeshift sites on mainland Greece, alternative sites are being established with the support of UNHCR. Tension is rising in several existing sites, and in particular in Eidomeni, with protests continuing through 21 March. Nevertheless 357 people were transferred from Eidomeni to relocation accommodation on the same day. The number of sites on mainland Greece hosting refugees now numbers 33.

### Weather Headlines

Deteriorating conditions as depression moves into the Aegean today and tomorrow, leading to gale to severe gale force winds and high seas on the Aegean.

Cooler trend, particularly across the north of the region, from Thursday and into the Easter weekend with strong to gale force winds for a time.



### Average Daily Arrivals and Trends Greece

7-13 March  
**1,420**  
-8% from previous week



14 - 20 March  
**605**  
-57% from previous week



21- 22 March  
**710**  
+17% from previous week

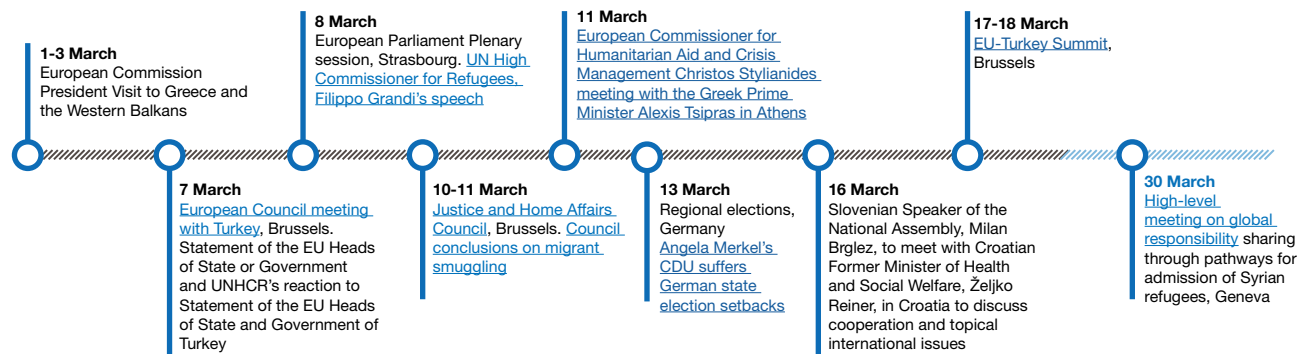


Monthly Average Daily Arrival  
March (as of 21 March)  
**1,108**  
-42% from previous month





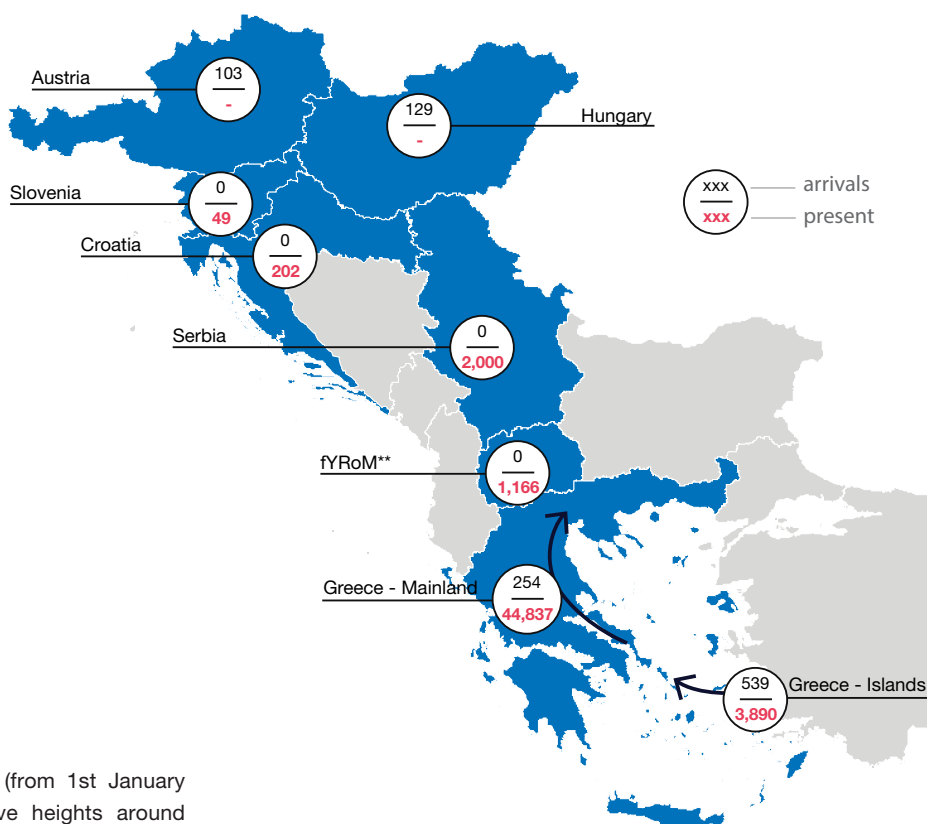
## Past and Upcoming Meetings/Events



## Estimated Arrivals and People Present\* per Country Yesterday

\* estimated people present currently not applying for asylum  
\*\* The former Yugoslav Republic of Macedonia (please note that the fYRoM abbreviation is used for design purposes)

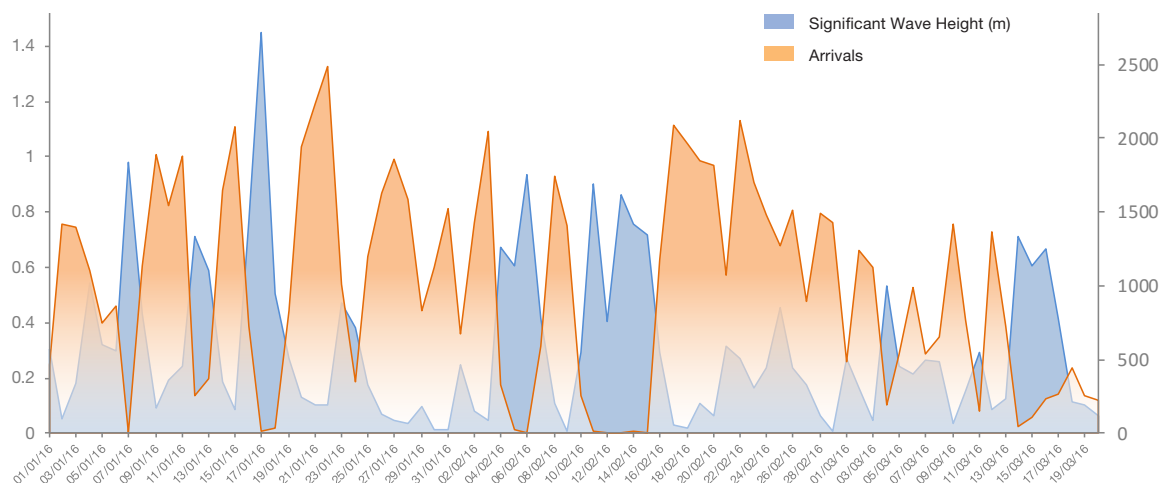
	Arrivals	Present*
Greece - Islands	539	3,890
Greece - Mainland	254	44,837
fYRoM**	0	1,166
Serbia	0	2,000
Croatia	0	202
Hungary	129	-
Slovenia	0	49
Austria	103	-



## Wave Height vs Arrivals to Lesbos

The graph highlights historical correlation (from 1st January 2016 until present) between average wave heights around Lesbos and number of registered arrivals to the island. The data shows a clear negative correlation: as the sea states become rougher, with increasing wave heights, the number of people travelling to Lesbos decreases. As sea states and wave heights reduce, the number of people travelling to Lesbos increases.

Applying this same negative correlation to forecast wave data allows us to make a forecast prediction on the number of people moving from Turkey to the Greek islands, giving a trend on whether these numbers will increase or decrease.





## Social Media

### Twitter Activity:

MSF Sea posted on the [withdrawal](#) of Medecins Sans Frontieres (MSF) staff from Moria camp: "BREAKING: MSF ceases work in #Moria camp #Lesvos after EU-Turkey deal turns reception centres into expulsion centres".

[MSF Sea](#) also denounced any participation in the transportation of refugees and migrants from the island of Lesvos into detention centres. According to their Twitter posts, "continuing to work inside #Moria would make [them] complicit in a system [they] consider to be both unfair and inhumane". However, sea rescue activities in north Lesvos will continue.

[Jeff Crisp](#): "The EU Turkey deal 'is descending into chaos'" as a [refugee set himself on fire](#) in protest to the closure of the former Yugoslav Republic of Macedonia-Greece border.

### Facebook Activity:

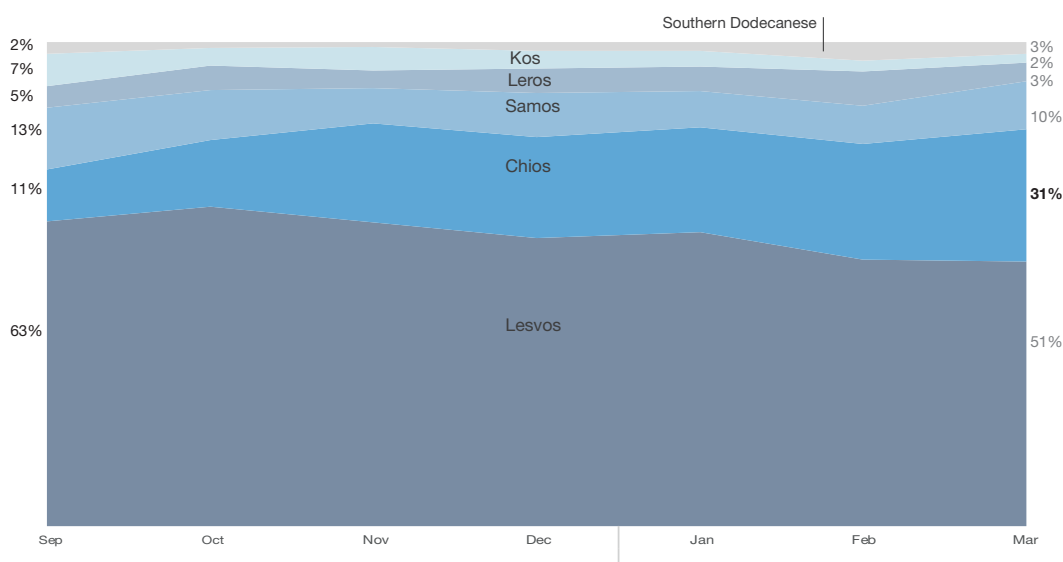
Facebook group Are You Syrious? reported that, according to the Syria Ceasefire Monitor, there have been seven recorded violations of the Syrian ceasefire; these included attacks in Idlib province as well as Eastern Ghouta.

### Current statistics for: #refugees

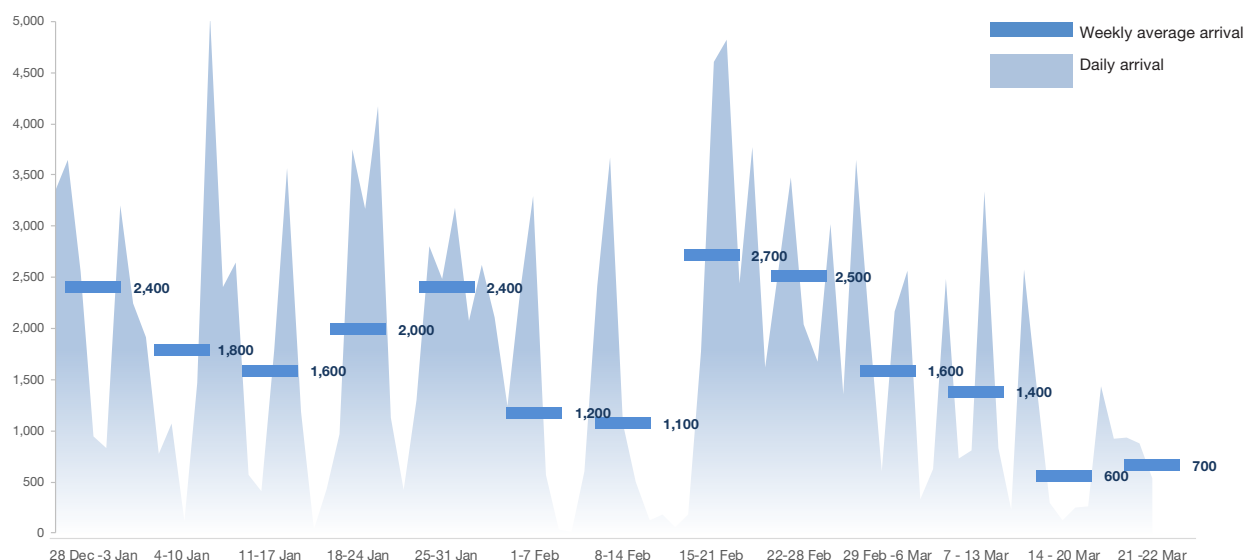
162 tweets, 359 retweets per hour  
Over 318,000 impressions per hour



## Distribution of monthly arrivals to each Greek island September to 20 March



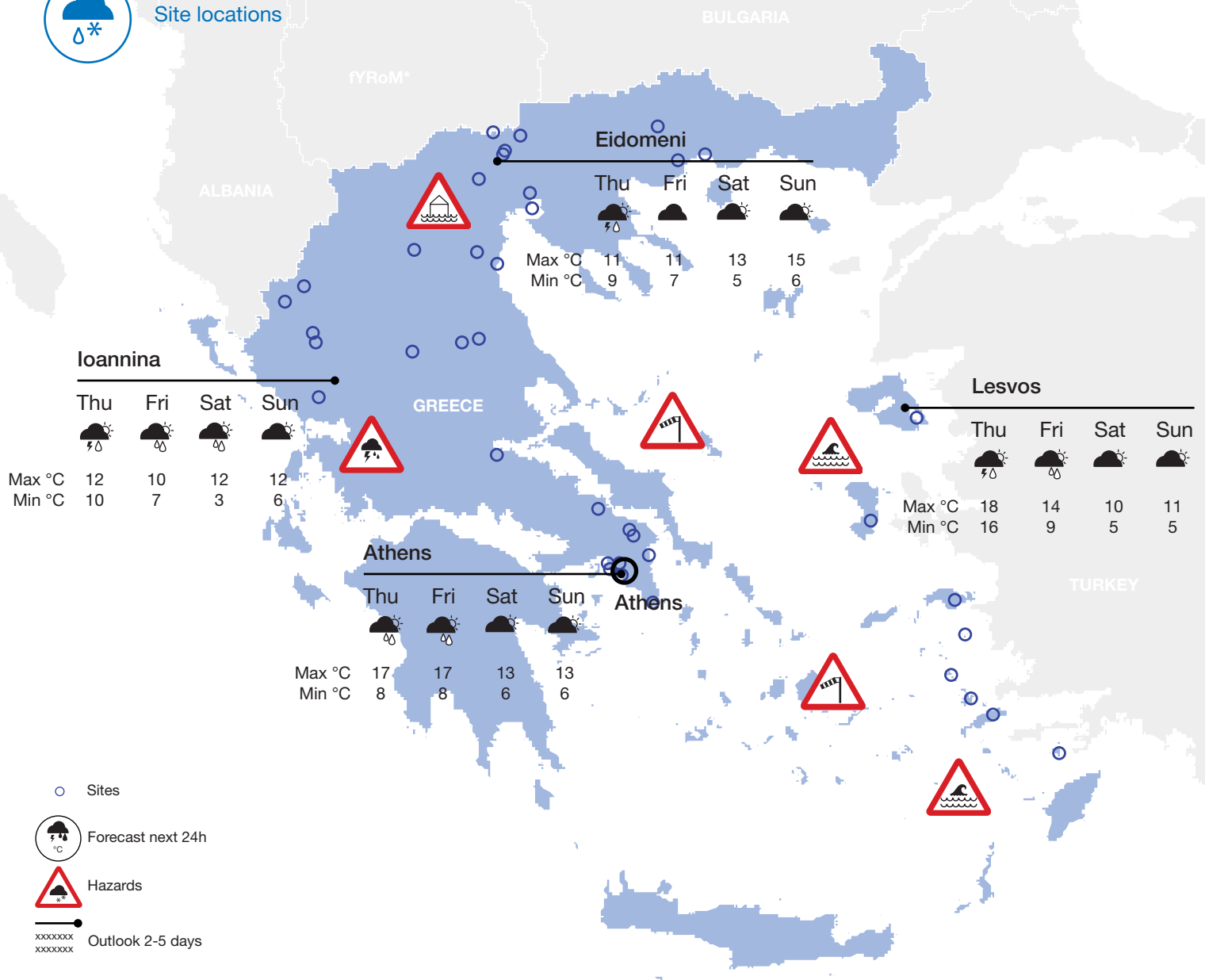
## Daily and Weekly Average Arrivals to Greece 28 December to 22 March





## Weather Forecast Greece

Site locations



### Tomorrow – Thursday 24th March

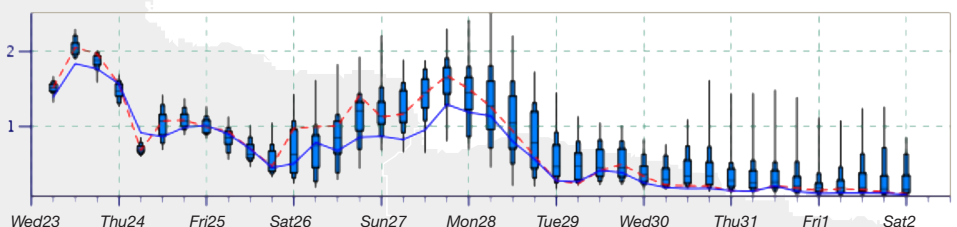
Cooler with further rain and thunderstorms, particularly affecting western coasts of Greece and the Former Yugoslav Republic of Macedonia in particular. Winds easing and becoming northerly across the Former Yugoslav Republic of Macedonia, leading to a cooler feel. Winds easing too across southern parts of Greece and the Aegean, but still strong to near gale in places. Seas are still expected to be rough, but will gradually ease through the day.

### Friday 25th March

Showers gradually petering out and becoming focused on Greece by the afternoon, with drier conditions spreading across the Former Yugoslav Republic of Macedonia. Feeling colder across the region, with night time minima falling into low single figures away from the islands. Winds continuing to ease across the area, with seas returning to slight.

### Weekend Outlook

Further light showers expected across southern Greece and the Aegean on Saturday, but dry and fine elsewhere. Fine and dry across the region on Sunday. Remaining cooler than average. Winds strengthening fresh to strong from the north especially on Sunday, leading to choppy seas, especially on the southern islands.



Graphic shows significant wave height in Metres for Kos. It highlights the rough seas expected tonight, which will ease tomorrow and the choppy seas expected over the weekend.

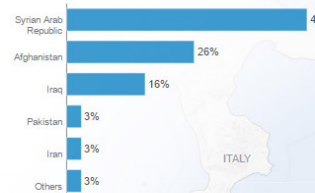


## Annex 1 Key Figures from the Portal

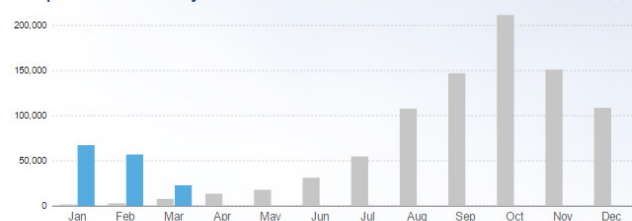
Increasing numbers of refugees and migrants take their chances aboard unseaworthy boats and dinghies in a desperate bid to reach Europe. The vast majority of those attempting this dangerous crossing are in need of international protection, fleeing war, violence and persecution in their country of origin. Every year these movements continue to exact a devastating toll on human life.

### Top-10 nationalities of Mediterranean sea arrivals

Top-10 nationalities represent 100% of the sea arrivals based on arrivals since 1 Jan 2016



### Comparison of monthly Mediterranean sea arrivals



**147,437** arrivals by sea in 2016

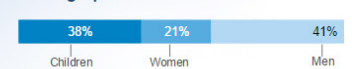
856,723 arrivals by sea in 2015

**91%** of arrivals come from the world's top 10 refugee-producing countries

© Last updated: 20 Mar 2016

● Sea arrivals in 2016  
→ Main routes through the Mediterranean

### Demographics based on arrivals since 1 Jan 2016



\*Serbia (AND KOSOVO: S/RES/1244 (1999))  
The boundaries and names shown and the designations used on this map do not imply official endorsement or acceptance by the United Nations

[Click here to view sources and disclaimer](#)



### Following the humanitarian crisis in Europe: Estimated daily arrivals

