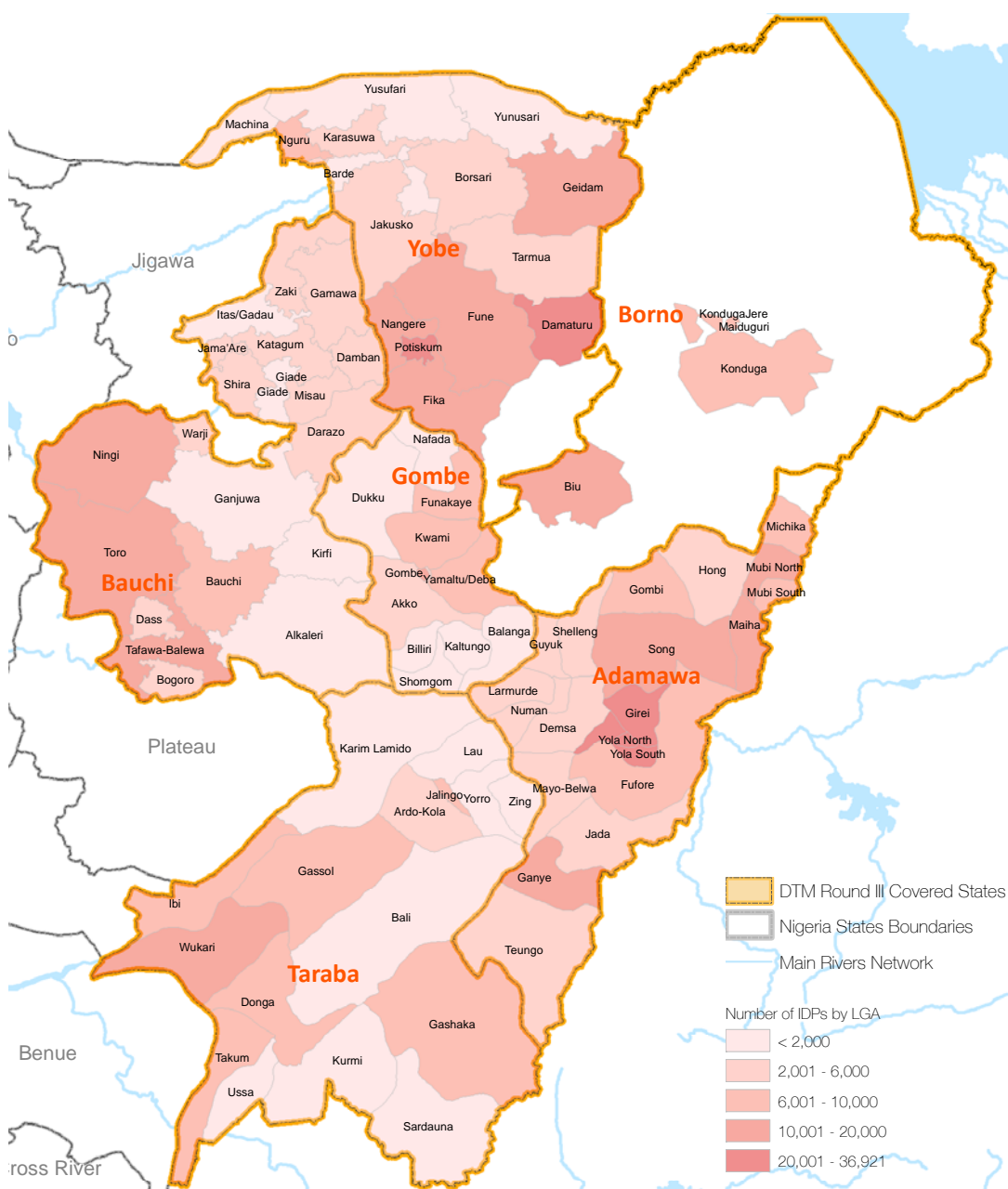


DISPLACEMENT HIGHLIGHTS

➔ 1,491,706 IDPs (194,145 households) were identified in Adamawa, Bauchi, Borno, Gombe, Taraba and Yobe states. (DTM)

➔ The highest number is in Borno (939,290) followed by Adamawa (222,882) and Yobe (139,591).

Number of IDPs by LGA (States of Adamawa, Bauchi, Borno, Gombe, Taraba and Yobe)



> The IDP population is composed of 52% of female and 48% of male

> 57% of the IDP population are children and 28% are less than 5 years old

> 94.05% were displaced by the insurgency

> The majority of the current IDP population was displaced in 2014 (64.5%)

> The IDPs come mainly from Borno (68%), Adamawa (15%) and Yobe (11%)

> 89.9% of IDPs live in host families while 10.1 live in camps

CONTACT

IOM NIGERIA
<http://nigeria.iom.int/dtm>

INTRODUCTION

Nigeria is prone to a range of natural and man-made disasters, including floods, storms and droughts, as well as communal violence, leading to successive waves of displacement. Since the beginning of 2014, the North-East has witnessed an increase in violence due to the intensification of Boko Haram attacks which led to additional displacement most especially in Adamawa, Bauchi, Borno, Gombe, Taraba and Yobe states.

IOM, in close collaboration with the National Emergency Management Agency (NEMA) began the Displacement Tracking Matrix (DTM) program with the objective of providing accurate and up-to-date information regarding the movements of internally displaced persons (IDPs) in Nigeria. The objective of the DTM program is to support the States Emergency Management Agency (SEMA), the Nigerian Red Cross Society (NRCS) and other partners on the field to establish a comprehensive system to collect and disseminate data on IDPs. The data collected through the DTM aims at establishing a comprehensive profile of the IDPs in the country and to inform the humanitarian community accordingly.

This report includes data collected through assessments conducted in a total of 86 LGAs and 687 wards where IDP presence has been reported¹ either in camps or in host communities, as well as the results of the camp profile exercises conducted in the formal and informal settlements identified in Adamawa and Borno States.

Due to security reasons, Madagali LGAs in Adamawa as well as Gujba and Gulani in Yobe were not accessible at the time of the assessment. In Borno, only 4 LGAs were accessible during the evaluation: Maiduguri, Jere, Biu and Konduga.

The DTM program is funded by the United States Agency for International Development (USAID) and the European Commission's Humanitarian Aid and Civil Protection department (ECHO).

¹ The LGAs that have IDP presence have been identified by the State Emergency Management Agency (SEMA) and partners in the field.

1 POPULATION PROFILE

1A: LOCATION OF DISPLACEMENT

The total number of IDPs identified in Adamawa, Bauchi, Borno, Gombe, Taraba and Yobe as of April 2015 is **1,491,706 IDPs** (194,145 households). Borno state (939,290 IDPs) has the highest number of IDPs, followed by Adamawa (222,882 IDPs) and Yobe (139,591 IDPs).

Current Location	IDP Individuals	IDP Households	Average HHs size
ADAMAWA	222,882	28,622	7.8
BAUCHI	84,667	14,184	6
BORNO	939,290	110,738	8.4
GOMBE	42,587	4,876	8.7
TARABA	62,689	10,777	5.8
YOBE	139,591	24,948	5.6
Grand Total	1,491,706	194,145	7.6

Table 1: Total IDP population by current location (State);

The increase in the number of IDPs compared to the second DTM report (1,188,018 IDPs)² is due to the violence that continues to affect the north eastern part of the country as well as the return of refugees who have not been able to settle back in their places of origin and are therefore considered as IDPs. The biggest increase in the number of IDPs has been registered in Borno state (28.4%) which continues to be subject to insurgent attacks and where populations returning from neighboring countries were identified.

In Borno, Maiduguri LGA is hosting the highest number of IDPs (592,272) whereas most of the internally displaced persons in Adamawa have been identified in Girei (36,921), Yola North (33,517) and Yola South (24,463).

In Yobe the majority of IDPs are in Damaturu (36,743) and Potiskum (27,415). In Gombe, the Gombe LGA is hosting the highest concentration of internally displaced persons (12,240).

In Taraba, most IDPs have been identified in Wukari (10,638) and Gassol (9,566) LGAs.

1B: DEMOGRAPHIC DATA

The demographic profile of the IDP population in the north-eastern states is the result of a large sample survey conducted in each of the wards visited by the data collection teams. The demographic data presented in this report were collected through a large sample survey conducted in each of the 687 wards visited by the DTM teams. For

² DTM report, February 2015

each ward, 20 IDP households were interviewed for detailed age and sex breakdown. In total, 6.7% of the total IDP population was interviewed.

After extrapolation, the results of the survey show that 52% of the IDP population are female and 48 % are male.

Children of less than 18 constitutes 57% of the IDP population and more than half of them are 5 years old or younger.

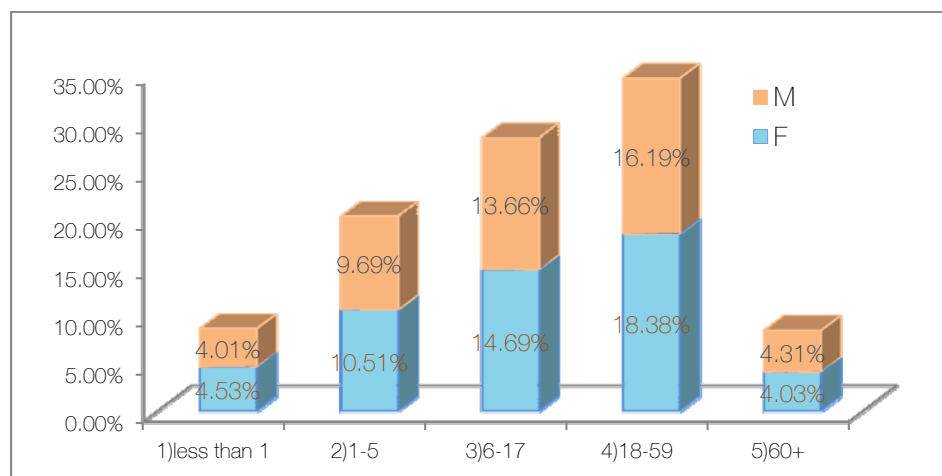


Chart 1: IDP Population by major age group breakdown;

1C: REASONS OF DISPLACEMENT

The vast majority of IDPs identified in the north eastern states have been displaced because of the insurgency (94.05%) and smaller number were forced to leave their place of origin because of community clashes (5.91%) or natural disaster (0.03%).

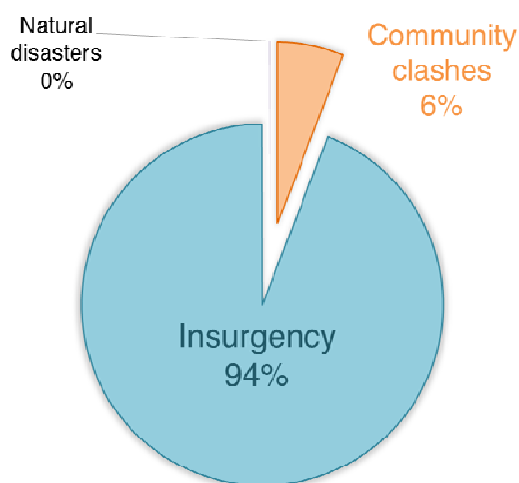


Chart 2: Reasons for displacement of identified IDP population;

With the exception of Taraba, most IDPs identified in the north-eastern states have been displaced by the insurgency. 78% of IDPs identified in Taraba have been displaced by communal clashes that had taken place in Taraba or in the neighboring states of Plateau and Nasarawa.

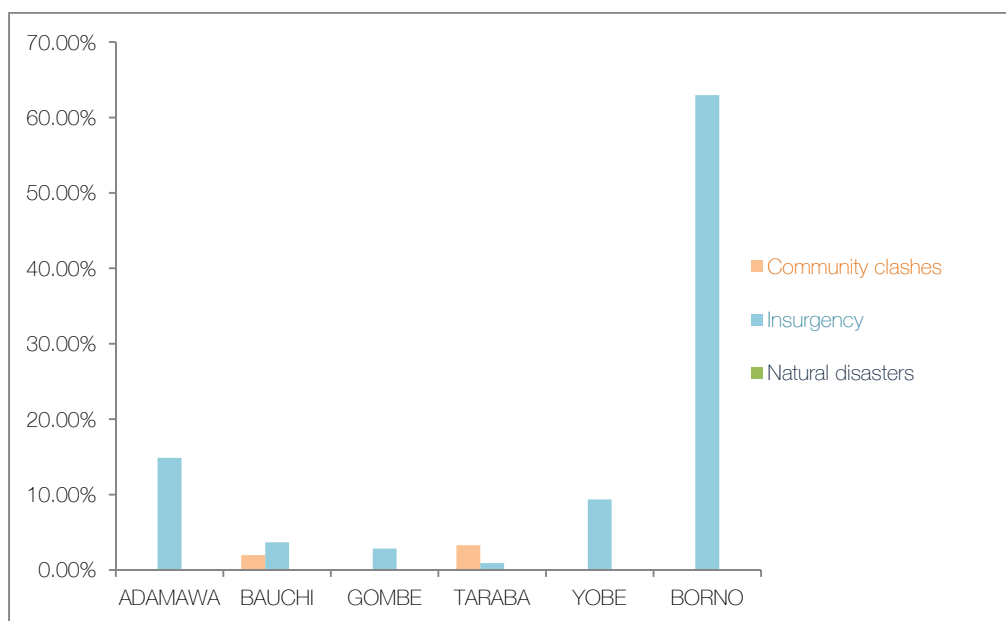


Chart 3: Total IDP Population by current location (State) and reason for displacement;

1D: PATERNS OF DISPLACEMENT

The majority of the IDPs identified during the third round of assessment left their place of origin in 2014 (64.5%) which corresponds to the escalation of violence in the north east. A significant portion left in 2015 (32.3%).

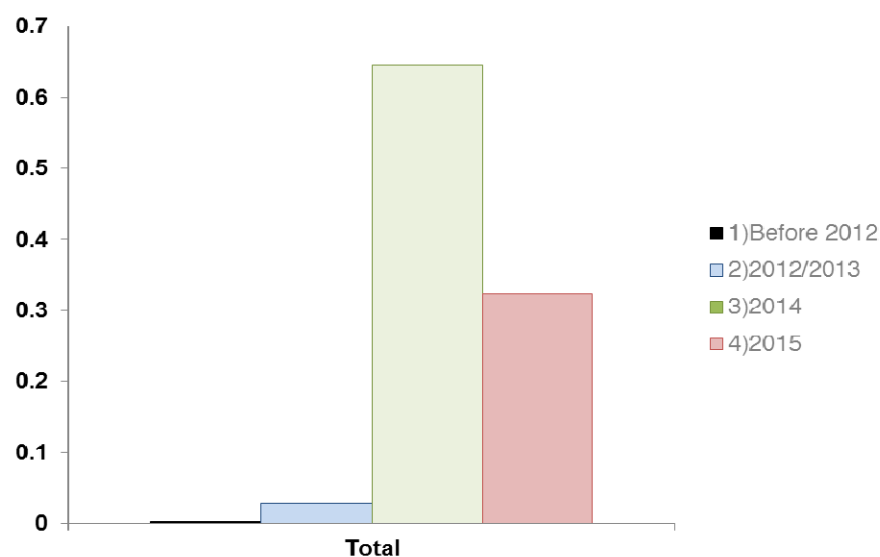


Chart 4: IDP population by year of displacement;

In Borno, 41.6% of the population was displaced in 2015 due to the continued violence that is affecting this state.

In parallel, the DTM assessments show the fluidity of IDPs' movements. According to the group assessments conducted for IDPs living in host communities which consisted in assessing groups of IDPs according to their LGAs of origin and year of displacement, 29,6% of the IDP groups who were assessed declared that most households in the group had been displaced two times before settling in their current place of living . Most of the IDPs who were displaced more than one time come from Adamawa State.

1E: ORIGIN OF THE DISPLACED POPULATION

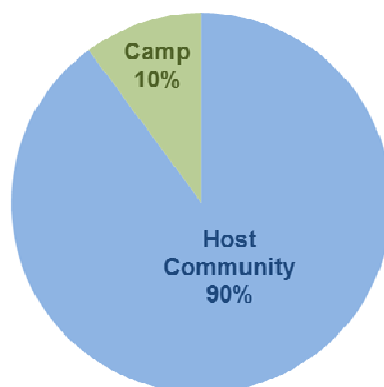
The majority of IDPs identified during this exercise come from the states which have been most affected by the insurgency: 68.4% come from Borno, 14.7% from Adamawa and 10.8% from Yobe.

		CURRENT LOCATION					
		ADAMAWA	BAUCHI	GOMBE	TARABA	YOBE	BORNO
STATE OF ORIGIN	ADAMAWA	91%	5%	5%	15%	-	-
	BAUCHI	-	23%	-	-	-	-
	BORNO	9%	31%	53%	3%	8%	100%
	GOMBE	-	-	3%	-	-	-
	PLATEAU	-	15%	-	-	-	-
	TARABA	-	2%	-	80%	-	-
	YOBE	-	18%	39%	0%	92%	-
	BENUE	-	-	-	1%	-	-
	KATSINA	-	-	-	-	-	-
	NASARAWA	-	6%	-	-	-	-
	KADUNA	-	-	-	-	-	-

Table 2: IDP Population by state of origin and current location (State);

All the IDPs in Borno were identified as coming from the same state. However, this data will need to be considered cautiously as many IDPs in Borno had previously sought refuge in neighboring countries. In Adamawa, most IDPs come from Michika and Madagali LGAs that were under Boko Haram control. Most IDPs in Yobe come from Potiskum which has been severely affected by the insurgency and from Gujba which is currently occupied by Boko Haram. The majority of IDPs identified in Bauchi and Gombe states come from Borno state (31% of IDPs in Bauchi and 52% of IDPs in Gombe). In Taraba, most IDPs come from Wukari LGA (17%) which has been severely affected by communal clashes over the past months.

1F: TYPE OF LOCATION - RESIDENCE OF IDPS

*Chart 6: IDP Population by type of location;*

The vast majority of IDPs in north eastern Nigeria live in host communities with relatives or friends (89.90%). In parallel, 10.10% of the IDP population live in camps or camp-like sites. Whereas no camp has been identified in Bauchi and Gombe, a new site was set-up in Damaturu (Yobe) in March 2015. In addition, 10% of the IDP population in Adamawa and 12.4% of IDPs in Borno live in camps or camp-like sites.

2 SITES PROFILE

2A: LOCATION AND NUMBER OF IDPS IN 42 SITES

The site profiles data for this report is the result of a detailed site assessment conducted in 42 sites in Adamawa, Borno, Taraba and Yobe in March and April 2015 covering 147,285 individuals (22,644 households).

The sites assessed during this exercise have been classified in three categories:

- **Camp:** open-air settlements, usually made up of tents, where IDPs find accommodation;
- **Collective center:** pre-existing buildings and structures used for collective and communal settlements of the displaced population;
- **Transitional center:** centers which provide short term/temporary accommodation for the displaced population.

Out of all the sites that were assessed, 29 were identified as collective centres while 9 were classified as camps.

2A.1: LOCATION AND NUMBER IN BORNO

According to the results of the camp assessments, there were 114,362 individuals (14,999 households) living in 16 displacement sites in Borno. The majority of sites are located in Maiduguri (10 displacement sites), 4 sites are situated in Jere, one site is located in Biu and one in Konduga.

The majority of sites are categorized as collective centers (13 sites), while one site is categorized as “camp” and one site as a “transitional center”.

2A.2: LOCATION AND NUMBER IN ADAMAWA

At the time of the assessments, 15 sites were identified in Adamawa State, hosting 21,948 individuals (3,697 households). The majority of sites are located in Yola South (6 sites), Girei (5 sites). Other sites are located in Yola north (1 site), Toundou (1 site), Numan (1 site), Ganye (1 site).

In Adamawa, 7 sites fall under the category “camp” while 7 other locations are collective centers, and one site was classified as a transitional center. The majority of individuals (57%) lives in camps, while 42% live in collective centers.

2A.3: LOCATION AND NUMBER IN TARABA

There are 6,303 individuals (3,281 households) living in 10 sites in Taraba sites. The majority of sites are situated in Wukari (4 sites) and in Jalingo (3 sites), one site is situated in Bali, one site in Gassol and one site in Donga. Out of the 10 sites assessed, 9 were considered collective centers.

In addition, one camp was set up in March in Yobe (Damaturu).

2B: DEMOGRAPHIC, VULNERABILITIES AND INTENTIONS OF RETURN

The results of the displacement site assessments exercise show that 61.7% of the IDP population in sites are female while 38.3% are male. 54.3% of the total number of individuals residing in sites are children under 18 years old and children under 5 years old constitute 28% of the total number of individuals.

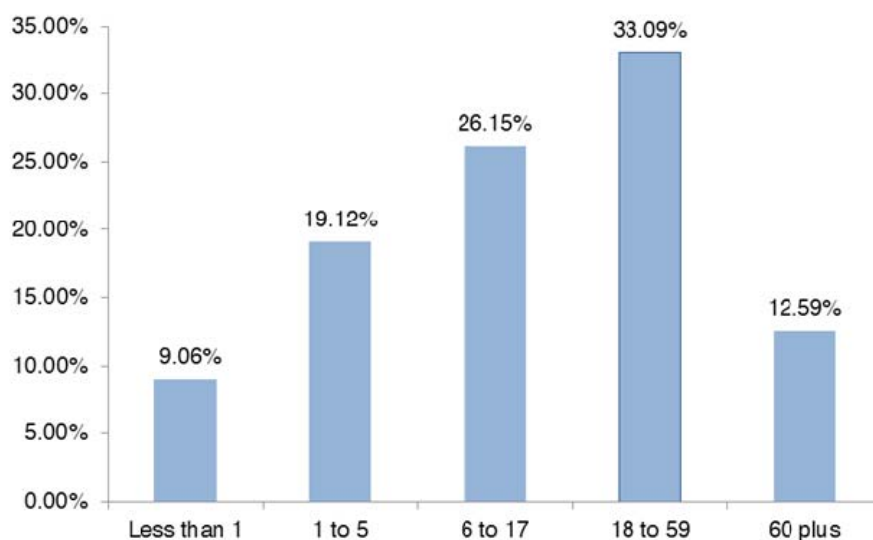


Chart 7: IDP Population by major age group breakdown;

Out of all the individuals living in sites, 16.1% were identified as vulnerable (23,842 individuals). 2.53% are single headed-households, 2.12% are breastfeeding mothers while 0.97% and 0.70% of the IDP population in sites were considered as separated and unaccompanied children.

The majority of IDPs in the sites that were assessed reported that they are planning to return to their areas of origin, while 26% were still undecided. In parallel, 13% declared that they would like to stay in the sites they are currently living in.

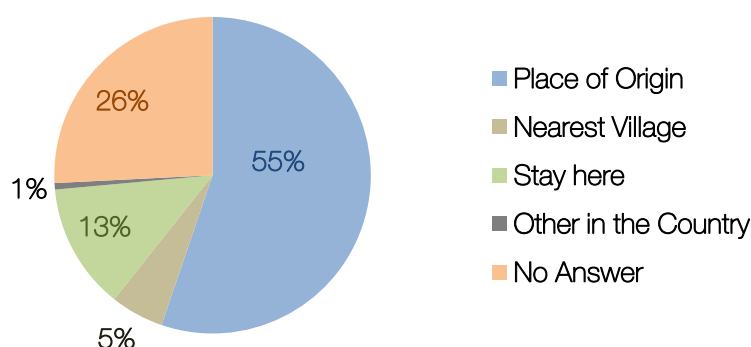


Chart 8: IDP in camps intentions of return

2C: SECTOR ANALYSIS



Shelter and Non-Food Items (NFIs)

In 10 sites more than 75 percent of the residents live indoors (with solid walls), in 6 sites – less than 75 percent of the individuals live indoors, in 4 sites – less than 50 percent, in 14 sites – less than 25 percent, and in 6 sites none of the IDPs are staying indoors. In 10 sites none of the individuals live outside, while in 26 sites less than 25 percent of the IDPs live outside, without any shelter, and in 6 sites – less than 50 percent of the residents live outside.

Percentage of IDPs Living in Structures with Solid Walls by Number of Sites

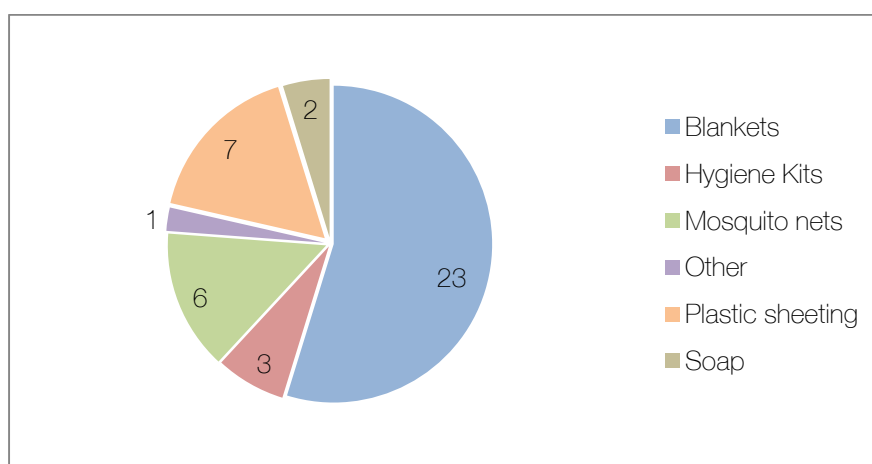
Percentage of Households Living Indoors (solid walls)	Number of Sites
< 25%	14
< 50%	4
< 75%	6
> 75%	10
None	6

Percentage of IDPs Living in Structures without Solid Walls by Number of Sites

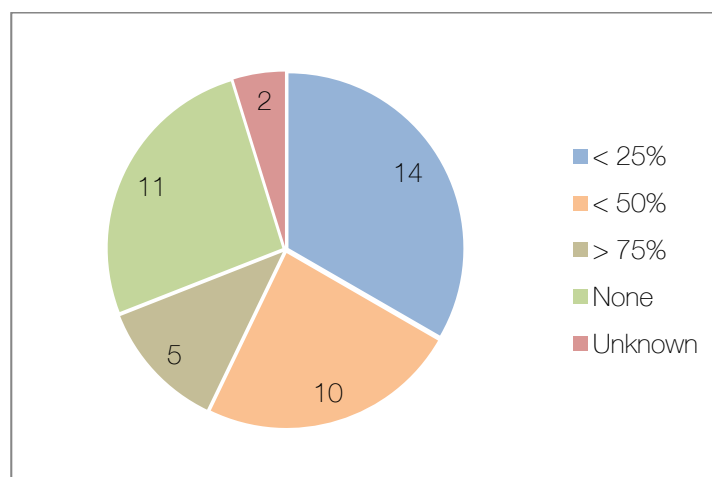
Percentage of HH living outside (no shelter)	Number of Sites
< 25%	26
< 50%	6
None	10
Total	42

In 36 sites residents reported that there is a need for shelter repair materials. Individuals in 23 sites reported blankets as the most needed type of NFI. At 7 sites, plastic sheeting is the most needed type of NFI, at 6 - mosquito nets, at 3 - hygiene kits, at 2 – soap, at 1 – other.

Most needed type of NFI



In half of the sites (21) individuals do not have access to electricity. In 14 sites less than 25% of individuals have access to safe cooking facilities whereas in 11 sites individuals have no access to safe cooking facilities, in 10 sites less than 50% of the residents have access to safe cooking facilities, and in 5 sites more than 75% of the resident have access to cooking facilities. In 2 sites it is unknown whether the residents have any access to safe cooking facilities.



Number of Sites with Different Levels of Access to Safe Cooking Facilities



WASH

In 24 sites the main water source is located on-site within a 20 minute walk, in 4 sites the main water source is located on site, but requires more than a 20 minute walk, in 6 sites the main water source is located off-site within 20 minute walk, and in 7 sites the water source is located off-site and requires more than 20 minute walk.

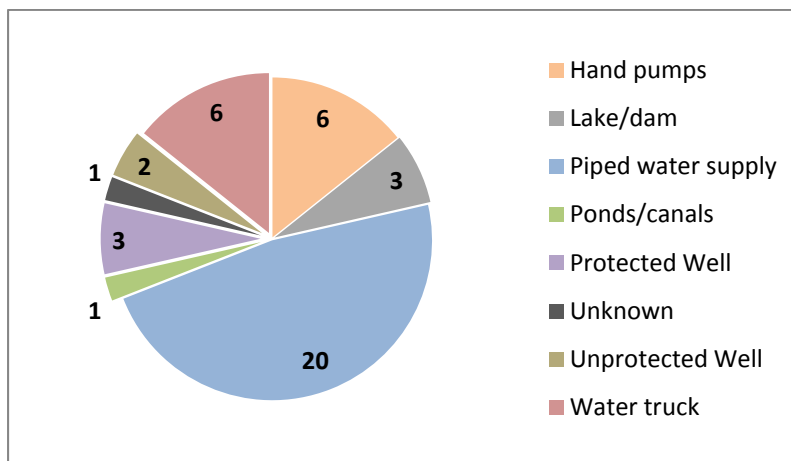
Location of site's main water source (walking, one-way)	Number of Sites
Off-site (<20 minutes)	6
Off-site (>20 minutes)	7
On-site (<20 minutes)	24
On-site (>20 minutes)	4

Residents in 21 sites reported having less than 10 liters of water per person and per day, in 11 sites – more than 15 liters of water available, in 8 sites – approximately 10- 15 liters, and in 2 sites – less than 5 liters

Average amount of water available per day and per person	Number of Sites
<10 liters	21
<5 liters	2
>15 liters	11
10-15 liters	8
Total	42

At 20 sites piped water supply is the main drinking water source, at 6 sites – hand pumps, at another 6 sites – water truck. Main water sources present at other the sites include lakes (3 sites), ponds (1 sites), protected wells (3 sites), and unprotected wells (2 sites). At 1 site the main water source is unknown.

Main drinking water source



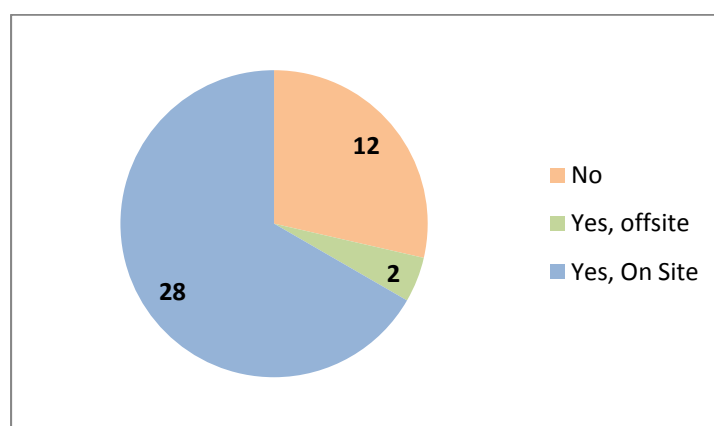
Households in 23 sites reported that the drinking water is potable and households in 24 sites reported no complaints about drinking water quality. At 24 sites residents reported that there is solid waste/garbage problem at the sites. In the majority of sites (34) the hand-washing stations are not available on sites. In 25 sites drainage is not working on sites.

In the sites assessed there is on average one toilet per 266 individuals when the sphere standards recommend 20 persons per toilets. In the majority of sites (31) there are separate male and female toilets on sites. At 31 sites residents reported the conditions of latrines as “not so good”, at 5 sites residents reported “good” conditions of the latrines, at 4 sites residents considered latrines “not usable”. At 2 sites the conditions of the latrines is unknown.



FOOD AND NUTRITION

Households in 28 sites have access to food on site, while households in 2 sites have access to food off site, and in 12 sites residents have no access to food. The situation is more critical in Taraba state, where residents at 8 sites do not receive food distribution.

Access to Food**Access to Food by District**

State	Access to food	Number of Sites
Adamawa	No	2
	Yes, On Site	13
Borno	No	2
	Yes, offsite	2
	Yes, On Site	12
Taraba	No	8
	Yes, On Site	2
Yobe	Yes, On Site	1

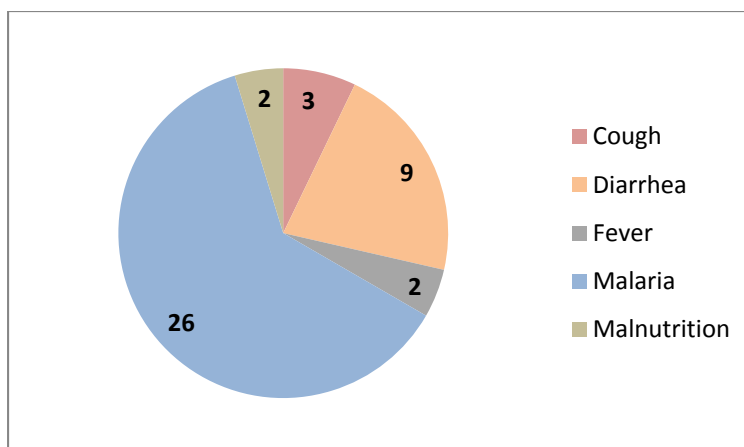
In terms of frequency, residents in 9 sites receive food distribution every day; in 18 sites residents receive irregular food distribution, 8 sites IDPs have never received food distribution, 2 sites – once a week, 1 site – every 2 weeks. At 4 sites the frequency of food distribution is unknown. Screening for malnutrition is conducted in 15 sites, while in 25 sites there is no screening for malnutrition. At 2 sites there is no information about whether there is screening for malnutrition. In 25 sites there is no supplementary feeding provided for pregnant mothers and in 34 sites no supplementary feeding is provided for children.

**HEALTH**

In 18 sites residents do not have regular access to medicine and in 11 sites IDPs do not have access to health facilities. In 25 sites, health facilities are located on-site within 3 km walk, while in 8 sites health facilities are located off-site within 3 km walk, in 3 sites health facilities are located off-site, requiring more than 3 km walk, in 1 site health facilities are located on site requiring more than 3 km walk, in 3 sites there is mobile clinic established on sites. In 2 sites none of the health facilities are located on sites. Government provides health services in 23 sites.

In the majority of the sites residents (26) reported malaria as the most prevalent health problem.

Most prevalent health problem at the site



EDUCATION

In 19 sites children do not have access to formal or informal education.. In 23 sites nearest education facilities are located within 1 km walk, in 5 sites – less than 2 km walk, in another 5 sites – less than 5 km walk, in 1 site – less than 10 km walk. In 4 sites respondents did not provide any information about the location of the health facilities and in another 4 sites the distance to health facilities is unknown.

In 11 sites less than 25% of children attend school, in 5 sites less than 50% of the children attend school, in 1 site – less than 75%, in 8 sites – more than 75%, and in 15 sites none of the children attend school. In 2 sites the number of children attending school is unknown.

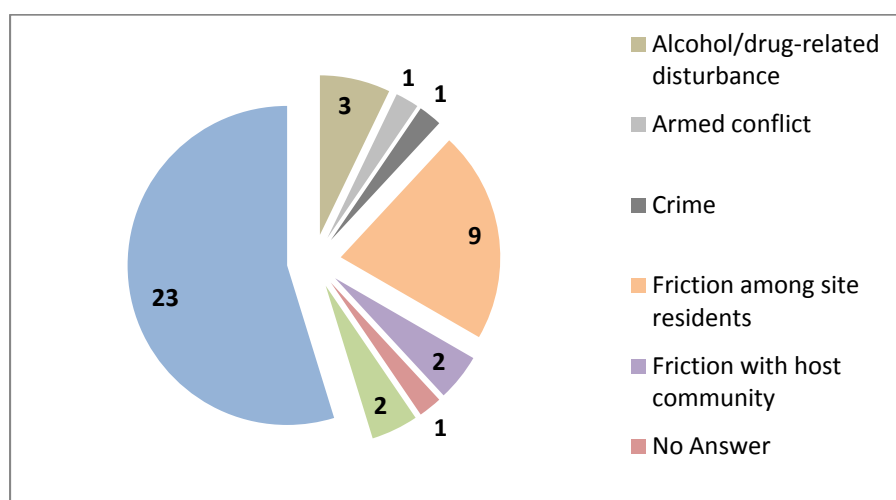


PROTECTION

32 sites have security available on site. Despite the presence of security providers, security incidents were reported by residents at 16 sites. In 9 sites women feel unsafe and in 10 sites children feel unsafe.

Of those security incidents reported by IDPs, the most common types are friction among site residents (9 sites), alcohol/drug-related disturbance (3 sites), friction with host community (2 sites), and theft (2 sites).

Most Common Types of Security Incidents Reported at IDP Sites



According to assessment findings, IDPs at 23 sites do not experience any form of gender-based violence (GBV). At 7 sites the most reported type of GBV incidents is domestic violence, at 5 - exchange of goods/food for sex, at 1 - rape, at another one - sexual harassment. In 5 sites there is no information about GBV incidents. Individuals at 19 sites report having a reporting mechanism in place for survivors of GBV.

Of those child protection incidents reported by IDPs, the most common types are child physical abuse (at 12 sites) and child emotional abuse (at 8 sites). In 19 residents did not report any child protection incidents, while information about child protection incidents is unknown in 3 sites.



COMMUNICATION

At 23 sites residents mostly get the information from mobile phones, at 9 sites - from family and friends, at 5 sites - from radio, at 3 sites - from local leaders, at 2 sites - from site management. At 22 sites residents require more information about situation in areas of their origin, at 12 sites - about safety and security, at 4 sites - about available health services, at 3 sites - about relief assistance, and in 1 site - about the ways of getting information.



LIVELIHOOD

In the majority of the sites farming (18 sites) and petty trade (17 sites) are the main occupation of the IDPs. At the majority of the sites (36) residents do not have access to land cultivation. At 18 sites residents do not have access to income generating activities. At 26 sites there is no livestock present on sites.

ANNEX 1 METHODOLOGY

The DTM activities are being implemented according to the methodology endorsed by the Government of Nigeria and carried out by teams composed of members of the National Emergency Management Agency (NEMA), the State Emergency Management Agency (SEMA) and the Nigerian Red Cross Society. Humanitarian partners in the field are also participating in the assessment on an ad hoc basis. Data are collected following the below steps:

Local Government area (LGA) level location assessment:

An assessment is conducted with key informants at the LGA level. The type of information collected at this level includes: displaced population estimates including household and individual level estimates, the identification of wards within the LGA with displaced populations and the type of displacement locations, reason for displacement, time of arrival of IDPs, and location of origin. The assessment also captures if IDPs have originated from the LGA and records contacts of key informants and organizations assisting IDPs in the area. The information is collected via interviews with key informants, who can be representatives of the LGA administration, IDP community leaders, religious leaders, Ward leaders, and NGO or humanitarian aid workers. The results of the LGA assessments, most importantly the indication of the presence of displaced households in specified wards/villages, disaggregated by those displaced in host communities and those displaced in camp-like settings, are utilized to advise whether to continue assessments at the ward/village level.

Ward/village level location assessments:

Assessments are conducted with key informants at the ward/village level. The information collected includes: estimates on the number of displaced households and individuals living in the ward, details on the location and type of residence of displaced households (host community – free or renting, camp-like settings – formal and informal), reason for displacement, areas of origin, and length of displacement. The assessment also includes information on displacement originating from the ward, as well as a demographic calculator based on a sample of IDPs in host communities and camp-like settings. Interviews are conducted with key informants, such as Ward leaders, representatives of the LGA administration, IDP community leaders, religious leaders, and NGO or humanitarian aid workers. The results of the ward/village assessments are used to verify the information collected through the LGA checklist. The ward/village level location assessments are carried out in all those wards identified as having IDP populations in the LGA checklist.

Group assessments

Assessments are conducted in all wards that have IDPs. In each ward, "groups" are established through interviews with key informants and according to IDPs' Local Government Area of origin and date of displacement.

For each group assessed, the information collected includes: estimates on the number of displaced households and individuals in the group, ward of origin, gender and age breakdown of IDPs in a group, history of movement and vulnerability of IDPs in a group.

Site - Camp assessments

The site assessments are undertaken in identified IDP sites (both camps and camp-like settings) to capture detailed information on the key services available. Site assessment forms are utilized to record the exact location and name of a site, accessibility constraints, size and type of the site, whether registrations are available, details about the site management agency (where one is present), how long the site has been in existence, and if natural hazards put the site at risk. The form also captures details about the IDP population, including their place of origin, and demographic

information on the number of households with a breakdown by age and sex, as well as information on IDPs with specific vulnerabilities. The form furthermore captures details on key access to services in different sectors: shelter and NFI, WASH, food, nutrition, health, education, livelihood, communication, and protection. The information is captured through interviews with representatives of the site management agency and other key informants, including IDP representatives.

Contacts:

NEMA: Alhassan Nuhu, Director, Disaster Risk Reduction, alhassannuhu@yahoo.com +234 8035925885

IOM: Stéphanie DAVIOT, Project Officer, sdaviot@iom.int +234 9038852524

<http://nigeria.iom.int/dtm>