



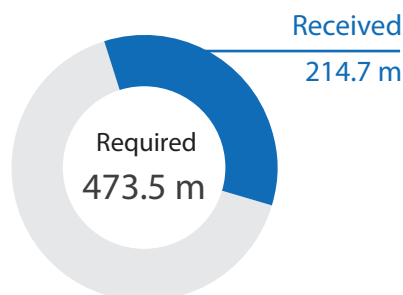
Food Security Jan - Aug 2016 Dashboard



**Inter-Agency
Coordination
Lebanon**

The quarterly dashboard summarizes the progress made by partners involved in the Lebanon Crisis Response and highlights trends affecting people in need. The Food Security sector in Lebanon is working to: OUTCOME 1) Promote food availability; OUTCOME 2) Promote food accessibility; OUTCOME 3) Promote food utilization; OUTCOME 4) Promote food stabilization.

2016 Funding Status as of 31 August 2016

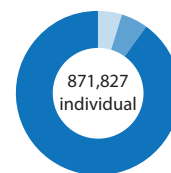


Targeted Population groups

1,4 m (People in Need)



Population reached by cohort



Syrian	783,794
Poor Lebanese	44,557
PRS	42,983
PRL	493

Progress against targets



Activities

reached / target

of individuals reached with cash based food assistance 758,397 / 889,120

of individuals reached with in-kind food assistance 105,057 / 50,200

Amount of cash for food transferred through vouchers, ATM cards and e-cards 146.06 m / 334.87 m

of farmers trained/received material on sustainable agriculture and livestock production 2,000 / 22,724

of individuals trained on monitoring of diseases 1,950 / 16,446

of individuals benefitting from micro-gardens 2,580 / 10,000

of new gardens created and provided with equipment/inputs 171/2000

of national institution staff trained 201 / 500

0%

100%



Outputs/Outcomes

reached / target

OUTCOME 1: Promote food availability

of vulnerable people reached with in-kind food assistance 105,057/ 50,200

% of farmers with enhanced farming production 18.3% 4,163/22,700

OUTCOME 2: Promote food accessibility

% of vulnerable people reached with cash based food assistance 85% 758,397 / 889,120

OUTCOME 3: Promote food utilization

% of individuals supported with nutritional practices (trained+gardens) 25.8% 2,580 / 10,000

OUTCOME 4: Promote stabilization

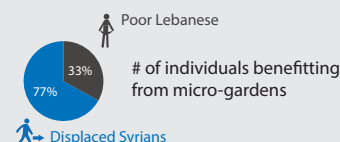
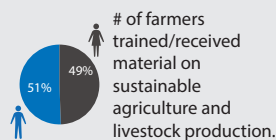
of national institutions involved in food security supported 80% 4 / 5

0%

100%

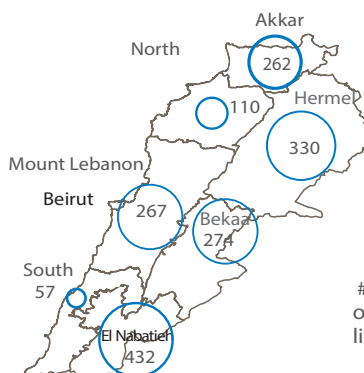
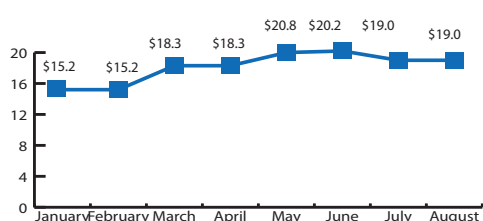


Age/Gender breakdown



Analysis

Amount of USD injected in the cash based food assistance system



of farmers trained/received material on sustainable agriculture and livestock production

The Food Security Sector partners are currently implementing targeted programmes which enhance direct access to food for the most vulnerable, combined with activities promoting dietary diversity, sustainable agriculture and rural livelihoods. A combination of direct food assistance responding to immediate short-term humanitarian needs, with sustainable food production and improved agricultural livelihood activities are being provided. Since January 2016, the Food Security sector assisted up to 871,827 vulnerable individuals with food assistance and agricultural support. Food accessibility through the use of food assistance (Outcome 2) has been promoted for up to 758,397 persons through various modalities (such as vouchers/e-cards/ATM). Beneficiaries assisted include up to 682,992 displaced Syrians, reached through e-cards (99%) and vouchers. In addition, up to 39,456 Palestine Refugees from Syria were provided with food assistance through ATM cards and 3,078 with vouchers. Up to 493 Palestine Refugees in Lebanon were assisted through vouchers. Thanks to contributions received in July, National Poverty Targeting Programme (NPTP) stakeholders including the Ministry of Social Affairs, the Presidency of the Council of Ministers, WFP and the World Bank agreed to gradually increase the current number of NPTP beneficiaries. This will ensure the sustainability and continuity of the assistance on the long run. As a result, up to 32,316 vulnerable Lebanese were also supported by the (NPTP). In addition, the sector partners promoted food accessibility through strengthening the agriculture labour market mainly through the support to the Ministry of Agriculture (MoA) and its 7 technical schools. Since the end of Q2, more than 620 adolescent students between the ages of 15 and 21 were supported for enrollment in the agricultural technical schools (of which 65% are girls) and more than 720 for enrollment in basic literacy and numeracy courses (of which 64% are girls).

Aiming at promoting food availability and supporting sustainable agricultural production (outcome 1), the food security sector supported more than 2,100 small scale Lebanese farmers with training and material for sustainable agriculture and livestock production and water conservation and efficient irrigation practices to enhance their production and adoption of climate smart technologies. To promote the control of plant diseases and promote Integrated Pest Management, around 2,000 individuals (farmers, government staff and private sector) received capacity building on monitoring, surveillance and management of plant diseases. In-kind food parcels (outcome 1) and hot meals were provided to complement the food assistance for up to 105,057 refugees and host communities. Among those assisted, up to 2,616 households were served through community kitchens. In addition to this, 14 partners distributed assistance (food and cash based) to approximately 76,000 individuals between Syrian refugees and vulner-

able Lebanese across the country.

In order to promote food utilization through diversified and quality food to improve food safety and nutrition practices (outcome 3) and as an upscale of the ERF funded micro garden pilot project, additional sector partners were able to allocate funds, creating to date more than 171 micro-gardens through the provision of agricultural inputs, seeds and tools to vulnerable Lebanese (34%) and Syrian women. This was supported with trainings on good nutritional practices, providing 2,580 individuals with access to diversified and nutritious food.

As part of promoting food stabilization through enhanced information on food security coordination and support to national institutions, (outcome 4), more than 201 government staff received capacity building. MoA staff in the statistics and extension departments were trained on using mobile data collection tools to conduct the agricultural production survey for 2016. In addition MoA and customs staff were trained on surveillance and management on plant diseases.

The FSS working group responded to the eviction incident that occurred in the North by activating its contingency plan of internal displacement. More than 160 evicted households were provided with food parcels by two FS partners, 79 in Bebnine and Mhammara by LRC and 117 in Bhannine by DAF. The response was coordinated together with the Basic Assistance sector or the identification of those in need of food assistance.



Facts and Figures

57%	of refugees HHs highly and severely vulnerable to Food insecurity ¹
54%	of refugees HHs moderately vulnerable to Food insecurity ¹
20%	of refugees depending on the e-car for food assistance as main livelihood source ¹
61%	of refugees HHs adopting severe and crisis coping strategies ¹
10%	of refugees HHs unable to cover SMEB (Survival Minimum Expenditures Basket) ¹
52%	of Lebanese HHs vulnerable to food insecurity ²
72%	of Farmers in need of agriculture support ²
94.5%	of PRS food insecure population ³

Data Sources:

¹ Vulnerability Assessment of Syrian Refugees in Lebanon (VaSyR 2015)

² Food Security and Livelihoods Assessment of Lebanese Host Communities (FSLA 2015)

³ PRS needs assessment 2015



Changes in context - Jan to Aug 2016

As of 31st August 2016, Food Security Sector partners received 214.7 million representing the 45 % of the total sector requirements for 2016, leaving a gap of 258 million against the current requirements. The 2016 current sectors requirements show an increased 49% compared to the 2015 revised appeal. Looking at the split of funds within humanitarian and stabilization activities there has been a shift compared to 2015.

The sector conducted an exercise to capture the most up to date information on the funds received by each partners as per the sector established priorities: 1. provide direct and critical food assistance to ensure improved food availability through in-kind food assistance (e.g. food parcels, community kitchens) and improved food access through cash-based transfers for food (e.g. e-cards, food vouchers) for vulnerable individuals; 2. Improve agriculture livelihood by increasing capacity of production of vulnerable small-scale farmers and by increasing employability in the food and agriculture sector; 3. improve nutritional practices and household dietary diversity. Strengthen food security information systems and coordination mechanisms and 4. Strengthen food security information systems and coordination mechanisms. The aim of this exercise is to develop a stronger advocacy message to ensure that the proper funding is allocated to cover all sector established goals as well as improve accountability for the provided funds against implemented operations. <http://data.unhcr.org/syrianrefugees/admin/download.php?id=11754>

Several assessments were conducted during this period to support national institutions and sector partners in accessing information on food security and agriculture, among which the VaSYR 2016, the Agriculture Labour Assessment, Agriculture Production study.

List of partners who reported on Activity Info in Q3

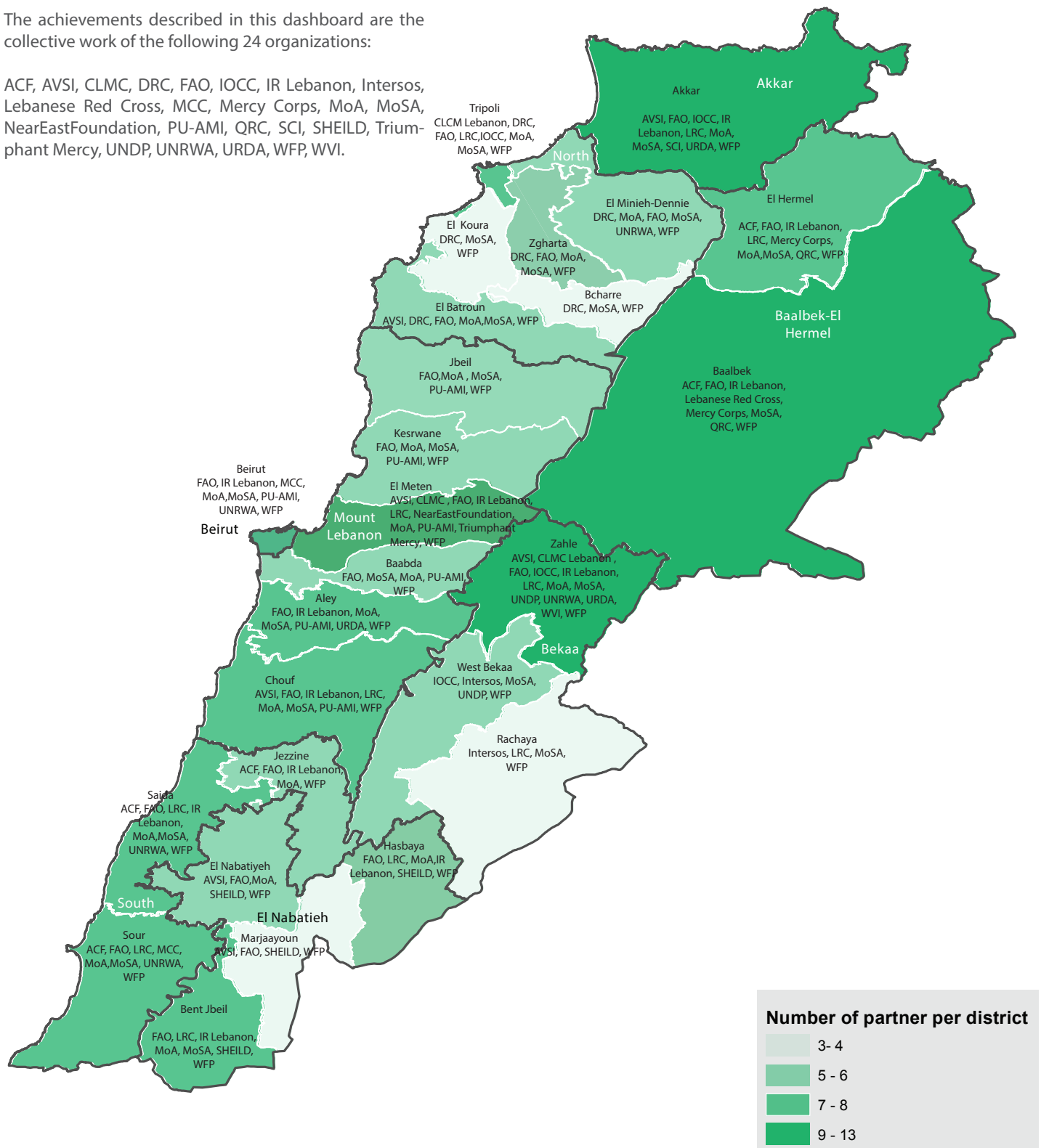
ACF, AVSI, CLMC, DRC, FAO, IOCC, IR Lebanon, Intersos, Lebanese Red Cross, MCC, Mercy Corps, MoSA, MoA, NearEastFoundation, PU-AMI, QRC, SCI, SHEILD, Triumphant Mercy, UNDP, UNRWA, URDA, WFP, WVI.



Organizations per district

The achievements described in this dashboard are the collective work of the following 24 organizations:

ACF, AVSI, CLMC, DRC, FAO, IOCC, IR Lebanon, Intersos, Lebanese Red Cross, MCC, Mercy Corps, MoA, MoSA, NearEastFoundation, PU-AMI, QRC, SCI, SHEILD, Triumphant Mercy, UNDP, UNRWA, URDA, WFP, WVI.



Note: This map has been produced by UNHCR based on maps and material provided by the Government of Lebanon for UNHCR operational purposes. It does not constitute an official United Nations map. The designations employed and the presentation of material on this map do not imply the expression of any opinion whatsoever on the part of the Secretariat of the United Nations concerning the legal status of any country, territory, city or area or of its authorities, or concerning the delimitation of its frontiers or boundaries.